

Spatial Data Infrastructure – Asia and the Pacific (SDI-AP) is a free electronic newsletter from the [Global Spatial Data Infrastructure Association \(GSDI\)](#) which is available in both English and Chinese language versions. The newsletter is produced for people interested in Spatial Data Infrastructure, GIS, remote sensing and geospatial data issues in Asia and the Pacific. It aims to raise awareness and provide useful information to strengthen SDI initiatives and support synchronising these activities across the region. Support for the newsletter is also provided by the [Permanent Committee on Geographic Information for Asia and the Pacific \(PCGIAP\)](#), a regional forum to enhance cooperation in the development of a regional geographic information infrastructure. The newsletter is currently being produced for GSDI by the [Centre for Spatial Data Infrastructures and Land Administration](#) at the University of Melbourne.



To subscribe to SDI-AP use [this link](#). Back issues of the newsletter are at the [GSDI website](#). You can also sign up for [GSDI News List](#) to receive alerts of special news and announcements as well as notification of new issues of the SDI-AP newsletter. To subscribe and access archives of thematic or regional discussion lists [please visit](#).

## Contents

Message from the editors .....	1
Contributions .....	2
GSDI News .....	2
SDI News, Links, Papers, Presentations .....	2
SDI Spotlight .....	4
GIS Tools, Software, Data .....	5
News from abroad .....	8
Articles .....	11
Books and Journals .....	13
Just for Fun! .....	13
Training Opportunities .....	14
Funding Opportunities, Awards, Grants .....	16
Employment Opportunities .....	18
Conference Proceedings .....	18
Conferences, Events .....	18

## Message from the editors

Welcome to the September edition of the newsletter.

Please note that the GSDI organisation is currently planning for the GSDI conference and calling for Workshop and Tutorials — further information is available from [the GSDI website](#) and the Conference, Events section of the Contents of this newsletter.

If you have news or information related to SDI, GIS, RS or spatial data that you would like to share with the community (e.g. workshop announcements, publications, reports, websites of interest etc.), [kindly send us the materials by the 25<sup>th</sup> of the each month](#) for your contribution to be included in the next newsletter.

Malcolm Park and Serryn Eagleson ([Editors](#)), at the [Centre for Spatial Data Infrastructures and Land Administration](#), The University of Melbourne.

[Back to contents](#)

## Contributions

Thank you to the following people and organisations for their contributions to this issue: Paul Box, Kate Lance, and Baek Wonkug for news feeds, Jeremy Shen and Jeremy Huang for the Chinese translation as well as Shivani Lal, GIS Development, and Asia Surveying & Mapping Magazine for directly contributing to the newsletter.

[Back to contents](#)

## GSDI News

### [Survey for proposed SDI “How to”“ guide](#)

World Bank personnel are hosting a workshop at [GSDI 12 in Singapore](#) in October that will explore the need for a pragmatic HOW TO GUIDE. The proposed guide would explicitly address the needs of developing countries in implementing and maintaining spatial data infrastructure at the sub-national and national levels.

As input to the workshop, they would like to have your responses to a [short survey](#).

The short 10 question survey is should take less than ten minutes to complete for the typical respondent.

Responses will remain anonymous unless you desire to divulge your identity and contact information to World Bank staff.

GSDI staff acting for World Bank GIS Staff

### [ESRI founder to be honoured at GSDI 12](#)

Jack Dangermond, founder and President of ESRI, has been named to receive the Global Citizen Award of the GSDI Association. The award will be presented on the opening day of the [GSDI 12 World Conference](#) in Singapore where Jack, as the recipient, will give the lead keynote address. His presentation on October 19 will focus on a global vision for spatially enabling society.

[Back to contents](#)

## SDI News, Links, Papers, Presentations

### [India Initiative to Teach Geospatial Technology in Secondary Schools](#)

Kipal Sibal, the minister of Human Resource and Development of India, and the former minister of Technology and Earth Science, has introduced a pilot program in 33 schools in which to teach geospatial technology at the secondary and vocational level. "We need to prepare our children for the 21st century, which is going to be a century of enormous challenges. Launching of these courses is also a step towards preparing the children for the challenges," said Sibal in an interview published in sify news.

Source: [Directions Magazine](#)



### [Mongolia Expedition Taps the Crowd for Imagery Interpretation](#)

A large-scale archaeological survey of parts of Mongolia sponsored by the National Geographic Society is making use of online imagery analysis from the crowd in order to help pinpoint possible locations for the tomb of Genghis Khan. As of today, the ongoing "[Field Expedition: Mongolia — Valley of the Khans Project](#)" has drawn 5,614 online explorers that have processed 342,675 images provided by the GeoEye Foundation to help direct on-the-ground fieldwork.

Source: [Vector1media](#)

### [Online Applications of the NT Spatial Data Infrastructure](#)

The NTLIS (Northern Territory Land Information System) Collaboration Forum is a place to find information, news and events relating to spatial data and services in the Northern Territory.

Source: NTLIS Collaboration Forum

### [NatureSDI Plus website](#)

[Back to contents](#)

### [SuperGIS Develop Urban Disaster Prevention Spatial System](#)

SuperGeo Technologies establishes Urban Disaster Prevention Spatial System by SuperGIS Desktop, helping inhabitants understand escape directions and evacuate to reduce the loss when disasters happen. The system can benefit disaster-prevention and improve urban security by integrating with the systems of other cities.

Source: GISCaFe

### [Mapping the Earth's Changes Over Time](#)

Without time there is no change. Over longer periods of time we may expect more changes, but very significant changes can arise in short durations. Heavy rainfall brings floods, an earthquake can cause major damages in a few moments and hail can wipe out a crop in just a few intense minutes. But other changes may take longer periods of time. Changes in the course of rivers, urbanisation and changing population demographics are measured and monitored over longer periods.

Source: Asian Surveying & Mapping

### [Glaciers Retreating in Asia](#)

The [U.S. Geological Survey](#), in collaboration with 39 international scientists, published a report on the status of glaciers throughout all of Asia, including Russia, China, India, Nepal, Bhutan, Pakistan, Afghanistan, Georgia, Kyrgyzstan, Tajikistan, and Kazakhstan. Many of Asia's glaciers are retreating as a result of climate change. This retreat impacts water supplies to millions of people, increases the likelihood of outburst floods that threaten life and property in nearby areas, and contributes to sea-level rise.

Source: Asian Surveying & Mapping

### [Geohazard Mapping in Zambo Peninsula Nears Completion](#)

A five-year national program that started in 2005 to map geohazards in the Zambo Peninsula region is now in its final year. The geohazard mapping program was given more emphasis and support by the national government after Southern Leyte landslide in Feb. 17, 2006, killing thousands of people thru a Presidential Directive and resolutions from the National Disaster Coordinating Council. It involves the identification and characterization of the types of geohazards, particularly on mass movement and flooding present in the Philippines.

Source: Asian Surveying & Mapping and Philippine Information Agency [press release](#)

### [Urban Disaster Prevention Spatial System](#)

The scope of the project covers the entire Taichung city. Taichung city, a 163.4-square kilometers area and having a population of around 950,000, is one of the focus development cities in the western Taiwan. Taichung is a dense city composed of residential and commercial districts. Since the zones were developed in different periods and the buildings were built in different years, difficulties in making disaster prevention plans confronted the local government. Even though some of the buildings have been re-built in recent years, these challenges still exist.



The goal of the project is to review the structure of urban space, formulate the spatial contents and levels of the urban disaster prevention, plan the spatial strategies for refuge and rescue, and further implement the basic constructions of disaster prevention facilities in Taichung city. The disaster prevention evacuation circulation and the entire emergency response system can be set up. Therefore, it makes possible to equip the circulation with the capabilities of self-supply and support so that Taichung city turns to be a safe city.

Source: SuperGeoTek GIS Applications

### [Spatial Information in the NZ Economy](#)

*Realising Productivity Gains* is a report commissioned by Land Information New Zealand, the Department of Conservation, and the Ministry of Economic Development. It provides robust economic analysis that quantifies the contribution spatial information makes to the New Zealand economy, as well as opportunities for this contribution to grow. The report concludes that use and re-use of spatial information is estimated to have added \$1.2 billion in productivity related benefits to the New Zealand economy in 2008.

Source: [Asian Surveying & Mapping](#) and NZ Geospatial Office

### [Australian Spatial Data Directory \(ASDD\)](#)

Source: GeoScience Australia

[Back to contents](#)

## SDI Spotlight

This month the *Spotlight* feature is contributed by [Katie Potts](#), MPhil post graduate student in the University of Melbourne's [CSDILA](#). Her research topic is "A national infrastructure to manage property risks."

### LAND ADMINISTRATION FOR RISK MANAGEMENT IN THE CONTEXT OF SDI

Increasingly in Australia there are risks that are of national significance. Examples of these risks are floods, bushfires, rising sea levels, drought, and asbestos contamination. Events resulting from these risks are becoming more frequent. We are experiencing more frequent storm events resulting in flood damage to property, the worst bushfires events in Australia's history with severe damage to property and loss of life, and asbestos contamination of the environment as a result of poor foresight in the past. Management of these risks is necessary, and effective management of these risks requires aggregated information about land and property at a national scale.

At present, no satisfactory system exists for collection and dissemination of land information on a national scale in Australia. This is because Australia is a country of federated states and consequently suffers from administrative arrangements that are organised on a 'silo' approach within each state or territory. The increasing nature of these risk events has put pressure on the insurance sector and government to provide protection from these risks. National land and property information is needed for this but is not available because the information is stored within the state and territory levels of government (figure 1). The organisations specialising in managing risk operate at a national level and consequently struggle to obtain the critical land and property information required for effective risk management.

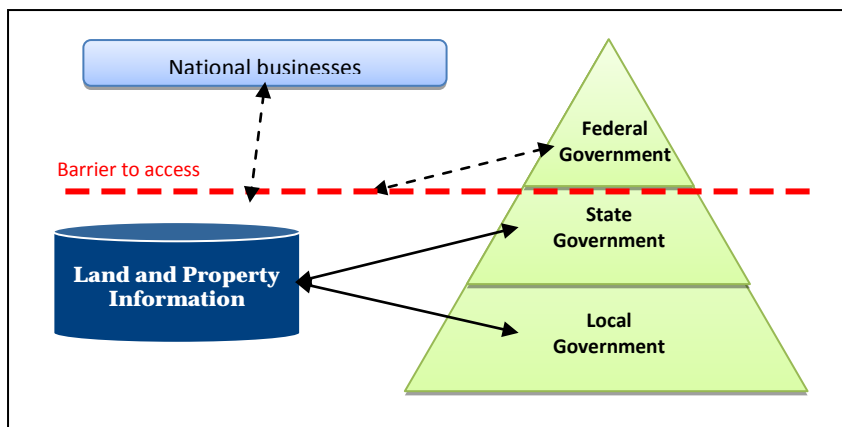


Figure 1: Access to land and property information for government and businesses

The land and property information holds a crucial role in the risk management process. The location, address, elevation, zoning, and proximity to other areas and locations are all important factors that are taken into consideration when deciding the course of action for management of risks to property. A national uniform land information infrastructure that provides access to information relating to land and property for citizens, business, and government is needed in Australia to allow for effective risk management to take place.

Figure 2 demonstrates the current situation of land and risk information sharing in Australia. At present there is information about risks being entered into land administration systems such as information on rights, restrictions, and responsibilities (RRRs), flood zones, and high-risk bushfire areas. Information about other risks however, such as the spread of infectious diseases, asbestos contamination, and rising sea levels is limited – either because the information is not collected or it is not available. Organisations operating on a national scale that have a role in risk management are currently being prevented from accessing this information because of the administrative arrangements that exist.

Existing risks are not able to be assessed and managed unless robust communication and coordination on a national scale between all relevant bodies is implemented. A national platform combining property and land information for all states and territories along with additional risk information would facilitate this.

[Back to contents](#)

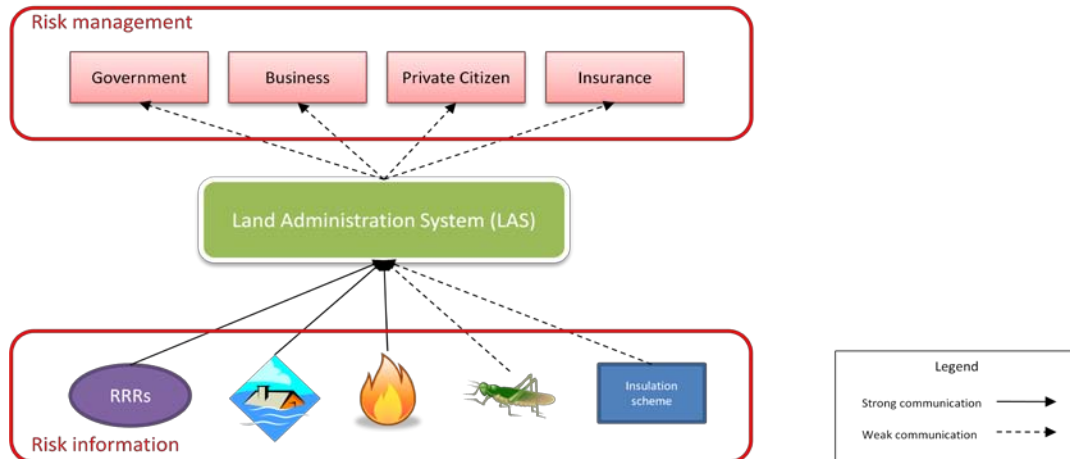


Figure 2: Flow of risk information into LAS and between entities

The focus of the research is to examine whether embedding risk management tools and techniques into land administration systems will improve the management of land and the management of risks relating to the land. Both qualitative and quantitative methods of research will be used in this research. Additionally, case studies will be carried out in order to gain a detailed insight into the processes used within the different jurisdictions in Australia, and to gain an understanding of the viewpoints of citizens, business, and government.

The expected outcomes are to develop a framework that will enable property risks to be assessed by citizens, business and government; and to develop a set of processes that will facilitate effective management of risks relating to property.

[Back to contents](#)

## GIS Tools, Software, Data

### [Sustainable City Modeling: Autodesk Announces New Release of LandXplorer](#)

Autodesk has [announced](#) the release of LandXplorer Studio Professional 2011 and LandXplorer Server 2011. The focus of the release is the integration of data from geospatial, engineering including BIM, and 3D visualization applications such as Civil 3D, Map 3D, Topobase, Revit, and 3ds Max to create city-scale infrastructure models.

Source: [Chris Andrews & Andreas Lippold \(Blog\)](#)

### [Why Are Students in India Not Interested in Remote Sensing?](#)

In a recent article of the [Times of India](#) ("Another entrance test for courses in remote sensing"), *Panjab University is having difficulty filling places in its post graduate program. "Sources said against 28 seats on offer, only nine candidates had applied. Out of the five who appeared in the exam, four qualified and finally only three opted for the course. The course that commenced during the last academic session had got low response even then. The entrance test was conducted twice, despite which only six seats were filled."*

Source: Asian Surveying & Mapping and the [Times of India](#)

### [Quake sensors to be deployed in New Zealand](#)

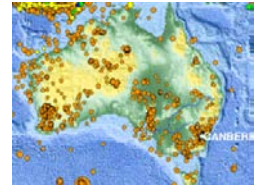
New earthquake sensors will be deployed across Canterbury and Marlborough in South Island, New Zealand, under a multimillion-dollar national project. From next year, GeoNet, a collaboration between the Earthquake Commission (EQC) and GNS Science, will roll out a monitoring station network across the upper South Island as part of a USD 45 million, five-year programme.

Source: [Geospatial World](#) (August 2) & [www.Stuff.Co.nz](#)

[Back to contents](#)

### [Observing Australia From Space In 3D](#)

An international consortium led by the University of NSW plans to begin designing satellite 3D mapping from space that could help monitor disasters like floods and fires. The 3-year project just moved closer to reality following a \$4.7 million grant from the Federal Government's Space Research Program that is being matched by the group.  
Source: Asian Surveying & Mapping



### [Bing Maps - Cool as a Cucumber](#) – or - [Bing's Bringing Sexy Maps](#)

Bing maps took another step forward this past week. The company improved the cartographic aesthetics of its long popular product. It is interesting that as web mapping grows older, and more experienced, our thirst for new additions and improvements does not stall. Instead, expectations grow and innovations continue to follow. Bing says, "Cool as a cucumber. The new Bing map type is like chewing a whole pack of Orbit mint gum while getting your entire body exfoliated with cucumber scrub in an ice chamber. Feels good, doesn't it? We certainly hope you enjoy it.

The new features are impressive - clearer fonts, better colours and improved details.

While we cannot vouch for the gum and cucumbers, the maps are improved. It is good to see cartographic elements remain important and that company's like Bing are thinking about and changing maps for the better  
Source: Asian Surveying & Mapping and [Bing Community](#)

### [JAXA and ADB agree to cooperate in application of satellite technology](#)

The Japan Aerospace Exploration Agency (JAXA) and the Asian Development Bank (ADB) agreed to cooperate in promoting the application of satellite technology to disaster management, climate change mitigation and adaptation, forest monitoring, and water resource management. ADB President Haruhiko Kuroda and JAXA President Keiji Tachikawa signed a Letter of Intent (LOI) at ADB Headquarters (Manila). Based on this LOI, JAXA and ADB will cooperate in providing technical assistance to ADB supported projects using satellite data and will work on capacity development on the use of satellite data through the training of persons from national institutions in Asia and the Pacific region. In addition, JAXA is considering to assign personnel to ADB to facilitate future collaboration while the results of such cooperation will also be shared through workshops, etc.  
Source: JAXA – Thanks to Wonkug Baek for this item

### [New release of opensource application ServiceCube](#)

The new application ServiceCube is officially available under an open source license. ServiceCube is the new name for the software formerly known as CatMDServices.

It is an initiative of the National Geographic Institute of Spain (IGN), which is the result of the scientific and technical collaboration between IGN and the Advanced Information Systems Group (IAAA) of the University of Zaragoza with the technical support of GeoSpatiumLab (GSL).

ServiceCube is a Web application for describing and searching web services by means of metadata. The tool has been implemented with J2EE and GWT technology.

ServiceCube can be downloaded from Sourceforge at this following [web site](#).

Thanks to [Rocio Recio](#) of the University of Zaragoza for this item

### [Google Corrects Map Border Error](#)

Google has corrected the map it had posted on the Net of the borderline between Viet Nam and China after a complaint by the Ministry of Natural Resources and Environment's Department of Survey and Mapping. The department said the depiction posted on Google Maps incorrectly attributed thousands of square kilometres of Vietnamese territory to China.

Source: [Asian Surveying & Mapping](#) and VietNam News

### [Map of Who Owns the Arctic](#) (International Boundaries research Unit, Durham University)

#### [Geospatial mapping to detect areas without schools – India](#)

The Government has proposed to undertake geospatial mapping of the states with regard to the unavailability of primary, secondary and higher education institutions to ensure that no areas are left without schools and colleges. This exercise will help the Government to get information for setting up institutions as per the requirement, so that no area is left unattended, HRD Minister Kapil Sibal said at the Parliamentary Consultative Committee meeting. He said the mapping would also help students exercise the choice of institutes for study. According to officials in the HRD Ministry, the problem lies in the uneven distribution of resources. While on the one hand there are areas which have a large number of schools and colleges, there are also places which have little access to educational institutes.

[Back to contents](#)

Thanks to Kate Lance for this item – see also [Asian Surveying & Mapping](#) & [IBN Live News](#) (India)

### [Noninvasive Mongolia Archaeology Expedition Harnesses the Crowd](#)

The National Geographic Society is currently doing fieldwork in Mongolia to try and find the lost tomb of Genghis Khan. The expedition is using an entirely new technique by posting satellite images online provided by the GeoEye Foundation that anyone can access and interpret for man-made disturbances.

... The small team of researchers and explorers is being led by University of California, San Diego researcher Albert Lin. Lin is also the program manager of the [UCSD-NGS Engineers for Exploration](#) program, that is giving graduate and undergraduate students hands-on experience in developing new imaging software and hardware for explorers

Source: Asian Surveying & Mapping and [Field Expedition: Mongolia](#)

### [How do we talk about our town?](#)

University of Melbourne researchers have developed a mobile phone game that will help ensure computers better understand the way we talk about our towns.

Associate Professor Stephan Winter from the Department of Geomatics at the University of Melbourne is leading a research team of linguists, computer scientists, and spatial information scientists to try and bridge the gap in the way we explain locations to our friends and how we type descriptions into mapping services such as google maps or in-car navigation services

Source: The Melbourne Newsroom & [IT News](#) & [Geospatial World](#)

### [Mapping the World's soils](#)

The Global Soil Map project has received a USD 18 million grant from the Bill and Melinda Gates Foundation and the Alliance for a Green Revolution in Africa (AGRA) to begin mapping in Sub-Saharan Africa, focusing on maintaining soil and landscape health and identifying the relationship of soils to food quantity and quality.

Source: [Geospatial World Weekly](#) (August 16) & Fairfax Media

### [Searching for the Physical Remains of Roman Surveying and Centuriation using periodic expansions](#)

Finding the physical and epigraphical remains of Roman surveying and centuriation throughout the Roman world remains an area of research that currently engages only a few historians of cartography. In the past the practice of Roman surveying was studied by many important Roman historians like Theodore Mommsen and Max Weber. There remain however, many difficult and unanswered questions about Roman cartography, and the lack of actual extant maps has made the blogger begin to look elsewhere for information that might shed light on its origins and methods. His current research on this problem employs GIS and image analysis to historical aerial photography and remote sensing imagery.

Source: John Hessler's **Warping History** blog (dedicated to the use of mathematical modeling and image analysis in the study of the history of cartography) **Well worth a visit for his other postings !**

### [Stopping crime before it starts](#)

Sophisticated analysis of data can sometimes tell police where criminals are headed. It's academic now, but the LAPD plans to get involved.

Source: LA Times



### [Web Photos That Reveal Secrets, Like Where You Live](#)

When Adam Savage, host of the popular science program "MythBusters," posted a picture on Twitter of his automobile parked in front of his house, he let his fans know much more than that he drove a Toyota Land Cruiser. Embedded in the image was a geotag, a bit of data providing the longitude and latitude of where the photo was taken. Hence, he revealed exactly where he lived. And since the accompanying text was "Now it's off to work," potential thieves knew he would not be at home.

Source: NY Times.

### [GIS Excels at the Assessment of Risk](#)

The disruption and devastation of natural disasters would appear to be on the rise right now, particularly in Asia where flooding has impacted a large portion of this region. Over the years, experts have gathered knowledge of earth systems interactions and have created models to help predict and mitigate the risks from such disasters. Without GIS, our world would be a much more dangerous and disrupted place, but there is a good deal more insight to be drawn from the analysis of such risks.

Source: Asian Surveying & Mapping

[Back to contents](#)

See also: [FEMA's Methodology for Estimating Potential Losses from Disasters](#)  
& [Risk Management Case Studies from Esri](#)

## [Kauring Airborne Gravity Test Site](#)

The Kauring airborne gravity test site provides a location for benchmarking the capabilities of airborne gravity (AG), airborne gravity gradiometer (AGG) and other airborne sensing systems. The site is located approximately 100 kilometres east of Perth, Western Australia, is free of low level flight restrictions, has minimal human infrastructure and hosts gentle rolling topography. Significant gravity and magnetic anomalies have been defined within the Kauring test site by detailed ground and airborne surveys. Individuals, companies or research organisations are invited to acquire data over the test site and make the data (and/or derived products) publicly available for independent analysis via this web page.

Source: [Asian Surveying & Mapping](#) and GeoScience Australia

[Back to contents](#)

## News from abroad

*"This section has been included to highlight some of the developments happening outside the region which demonstrate SDI in action."*

## [Report: Value of Geospatial Data to Economy](#)

ConsultingWhere and economic consultants, ACIL Tasman, produced the free, but registration required report for the Local Government Association. It claims to be "the first to assess the value that geospatial information adds to the economy." It focuses on local public services in England and Wales and evaluates "the benefits both within the delivery organisations and externally to the wider business community and citizens." The report assesses the annual impact of geospatial on GDP at £320m per annum and "assesses future trends and ways in which this might be further enhanced."

Source: [Directions Magazine](#)

## [Germany and The Netherlands together to fight disasters](#)

A new cooperation between the Dutch Kadaster (cadastre) and the topographical services of Nordrhein-Westphalen (Germany) facilitates to detect and act upon disasters like nature fires and floods faster.

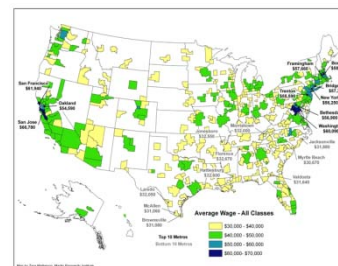
Source: [Geospatial World](#) (August 2, 2010); [WaterLink International](#); [www.l1.nl](#) & [www.kadaster.nl/english/](#)

## [The Geography of High-Paying Jobs](#)

[Richard Florida](#) decided to take a closer look at the underlying [BLS \(Bureau of Labor Statistics\) data](#) to compile a more comprehensive mapping of regional pay. With the help of his colleague, Charlotta Mellander, they looked at the pay levels for three types of jobs - high-skill, high-pay, creative class jobs; traditional, blue-collar, working class jobs; and lower-skill, lower-pay service jobs.

See also [The U.S. Brainpower Map](#) & [Fattest States](#)

Source: [The Atlantic Monthly](#)



## [Open source mapping in the Caucasus](#)

Open Maps Caucasus (OMC) is a JumpStart International mapping initiative dedicated to the creation of open geographic data and promoting its use by building capacity in the Caucasus for visualizing information geographically. The community-based mapping model generates valuable data and sustainable impact by training volunteers and engaging people around open content and ways to use it to develop civil society, business, good governance, and above all, means of expression.

Thanks to Kate Lance for this item

## [Creating a Participatory, Open Source Map of an Entire Country](#)

OMC employs dozens of GPS-wielding mappers who work in teams across Georgia to collect, process and publish map data. The OMC office in Tbilisi is abuzz with tech-savvy students, GIS wizards, and a fun-loving and coffee-fueled atmosphere. The sheer amount of map data flowing through it is stunning. Ten offices and

[Back to contents](#)



over 200 volunteers have mapped thousands of kilometers of roads in over 1,600 cities, towns, and villages. And they're giving it all away for free. Thanks to Kate Lance for this item

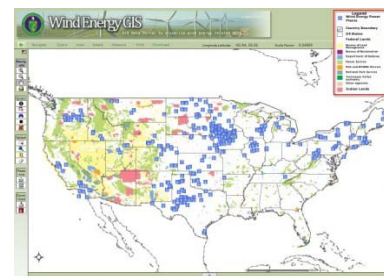
### [New technique to predict earthquakes](#)

Alonso Arellano, a Professor from the Department of Mining Engineering, Faculty of Engineering, Universidad de Santiago de Chile (USACH), along with Guillermo Sanchez Arellano, has developed a new approach to analyse geotectonic activity through the study of satellite images. The new approach considers the tension in the earth's crust, reflected on the surface of the Earth in the form of alignments. Studies of the temporal variation of these alignments identify changes in the tension of the crust.

Source: [Geospatial World Weekly](#) (August 9) & [www.ecotisias.com](http://www.ecotisias.com)

### [Wind energy GIS](#)

In support of the U.S. Department of Energy's (DOE) Energy Efficiency and Renewable Energy (EERE) Office, DOE's Oak Ridge National Laboratory (ORNL) has launched the [Wind Energy Data & Information \(WENDI\) Gateway](#). The WENDI Gateway is intended to serve a broad range of wind-energy stakeholders by providing easy access to a large amount of wind energy-related data and information through its two main interfaces: the Wind Energy Metadata Clearinghouse and the Wind Energy Geographic Information System (WindGIS). The Metadata Clearinghouse is a powerful, customized search tool for discovering, accessing, and sharing wind energy-related data and information. Its database of metadata records points users to a diverse array of wind energy-related resources.



Thanks to Wonkug Baek for this item

### [Danish address data sharing study](#)

The Danish Enterprise and Construction Authority (DECA), has now published an analysis of the social and economic benefits associated with the decision in 2002 to provide the official Danish address data "free of charge" for public as well as commercial re-use.

The main conclusion of the study is that the direct financial benefits from the agreement for society in the period 2005-2009 amount to around EUR 62 million (~DKK 471 million). Until 2009 the total costs of the agreement has been around EUR 2 million.

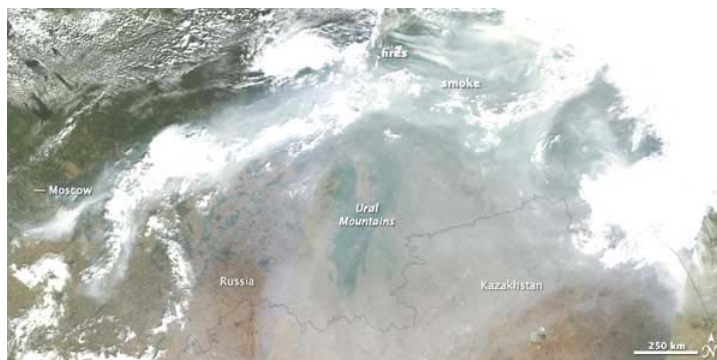
In 2010 it is estimated that social benefits from the agreement will be about EUR 14 million, while costs will total about EUR 0.2 million.

A 8-page memo presenting the study and the results is published in [Danish](#) and [English](#) at the website < [www.adresse-info.dk](http://www.adresse-info.dk) >

News on the analysis has also been published on the [European "ePSIPlatform"](#).

Source: Douglas D. Nebert, Senior Advisor for Geospatial Technology, FGDC Secretariat

### [Geospatial World Weekly – "Image of the Week"- Russian Wildfires](#)



### [FAO launches real time fire monitoring website](#)

Food and Agricultural Organization of the United Nations (FAO) launched a new online portal on fire information and real time monitoring to help countries to control fire effectively and protect property and natural resources. The new Global Fire Information Management System (GFIMS) detects fire hotspots from satellites operated by the US National Aeronautics and Space Administration (NASA).

Source: [Geospatial World Weekly](#) (August 16) & FAO

[Back to contents](#)

### [New geo-referencing system to generate 3D models](#)

Researchers at the Polytechnic University of Valencia (UPV), Spain, have developed a new geo-referencing system for generating 3D models with high accuracy and facilitate the work of geo-referencing of optical sensors or laser imaging.

Source: Geospatial World Weekly (August 16) & [ABC \(Spain\)](#)

### [Rescuers say 33 Chilean miners found alive after 17 days trapped underground](#)

All 33 Chilean miners trapped deep underground for 17 days were found alive Sunday, Chile's president confirmed. A probe sent some 2,257 feet (688 meters) deep into the collapsed mine early in the morning came back with a handwritten note: "All 33 of us are fine in the shelter."

Rescuers had tried seven times before to reach the shelter, most recently drilling 2,300 feet (700 meters) and missing the target on Thursday.

**They blamed the error on the company's maps of the mine.** (Editors' emphasis)

Source: Chicago Tribune & [NY Times](#)

### [Jungle bees tracked with tiny radio transmitters](#)

A German scientist has attached tiny radio transmitters to the backs of tropical bees in order to track the insects on their floral pollen forays. The researcher's study provides startling new insights into the vast distances that bees cover in their never-ending search for nectar from rare flowers in Panama.

Some of the iridescent blue-green orchid bees were found to buzz tirelessly for surprisingly long distances. One even crossed the shipping lanes of the Panama Canal.

Source: The Hindu Science & Technology News (India)

See also [Scientific American](#) & [Communicate Science](#) & [Science Daily](#). The scientific article is available [here](#).



### [Premium air routes aim to put jets in faster lanes](#) Can GPS create fast lane for jets?

Space-based navigation aids offer an unprecedented level of accuracy and confidence for pilots and controllers that a plane is adhering closely to the desired route. As a result, aircraft can fly precise routes; swoop in for landings in a continuous path, rather than being stepped down slowly; and operate in tight formation to maximize use of runways.

Source: Chicago Tribune

### [Mapping of 'Titanic' wreck begins](#)

A high-tech expedition that aims to create a detailed map of the wreckage of the Titanic has begun exploring the ocean floor where the ship sank nearly one hundred years ago, the crew said.

Sonar onboard an automated submersible vehicle combined with high-resolution video will be used to create three dimensional images of the fabled oceanliner.

Source: the Melbourne Age & [Expedition Titanic](#)

### [BP Employing Unmanned 'Wave Gliders' to Measure Oil Spill Impacts](#)

BP officials showed off a gadget called the Wave Glider Wednesday, the latest tool in their efforts to measure the long-term impact of the Gulf of Mexico oil spill. Manufactured by Liquid Robotics, the device can cruise through the water on a pre-programmed course for up to a year or, at a moment's notice, can be given new instructions remotely from shore. It has a global positioning satellite antenna, a weather station and sensors that can detect dispersed oil and microscopic phytoplankton that makes up the bottom of the food chain. BP officials said the data will help them monitor the effects of the spill and respond to them.

Source: V1 Magazine News and [Alabama Local News](#)



## Articles

### [11 ways geolocation is changing the world](#) by [Rob Reed](#)

Location technologies are transforming how we experience, navigate, and ultimately better our world. From the global to the local, here are #10Ways geolocation is a positive force for good.

Source: [Karl Burkart blog](#)

### [Elevation change detection in the Firiza area using GIS techniques](#)

by [Raiz Roland Robert](#) of "Babes-Bolyai" University, Geography Faculty, Cluj-Napoca, Romania

Source: [Geospatial World Weekly](#) (August 9)

The Centre for SDI and Land Administration have recently published the following articles:

Bennett, R, Kalantari, M, and Rajabifard, A. (July 2010). "[Beyond Cadastre 2014](#)", *GIM International*, vol 24(7).

Bennett, R, Pettit, C, Senot, H, Aurambout, JP, Sheth, F, Soste, L et al., "[Visualizing climate change with ubiquitous spatial technologies](#)", paper presented at the Joint International Conference on Theory, Data Handling and Modelling in GeoSpatial Information Science, Hong Kong (26-28 May, 2010)

Bennett, R, Rajabifard, A, Kalantari, M, Wallace, J, and Williamson, I, "[Cadastral Futures: Building a New Vision for the Nature and Role of Cadastres](#)", Paper presented at the FIG congress 2010.

Krelle, A, and Rajabifard, A, "[Cadastre 2014: New challenges and Direction](#)". Paper presented at the FIG congress 2010.

Marwick, B, and Richards, P, "[A New G-NAF Processing Environment](#)". Paper presented at the FIG congress 2010.

Olfat, H., Rajabifard, A, and Kalantari, M, "[Automatic Spatial Metadata Update: a New Approach](#)". Paper presented at the FIG congress 2010.

Olfat, H, Rajabifard, A, and Kalantari, M, "[A synchronisation approach to automate spatial metadata updating process](#)", *Coordinates*, vol VI, 27-32 (March, 2010)

Rajabifard, A, "[Spatially Enabled Government and Society- the Global Perspective](#)". Paper presented at the FIG congress 2010.

Stuedler, D, and Rajabifard, A, "[Spatially Enabled Society-Role of the cadastre](#)". Paper presented at the FIG congress 2010.

Sutanta, H, Rajabifard, A, and Aditya, T, (2010), [Implementing Spatially Enabled Government \(SEG\) Concept in Indonesian Local Government, challenges and opportunities](#). Book chapter in M. S. Zein (Ed.), *Contribution Matters insights of Indonesian Students in Australia*

Sutanta, H, Rajabifard, A, and Bishop, I, "[Impediments in e-Planning in Local Government - Indonesian Case Study](#)". Paper presented at the FIG congress 2010.

Sutanta, H, Rajabifard, A, and Bishop, I, "[Studying Spatial Plan in Coastal Urban Environment - facing global threat and adapting to local condition](#)". Paper presented at the FIG congress 2010.

Williamson, I, Enemark, S, Wallace, J, and Rajabifard, A, "[Land Administration for sustainable development](#)". Paper presented at the FIG congress 2010.

Williamson, I, Rajabifard, A, and Holland, P, "[Spatially enabled society](#)". Paper presented at the FIG congress 2010.

"Rajabifard, A, "[Data Integration and Interoperability of Systems and Data](#)", paper presented in Second

[Back to contents](#)

### [Implementing a geospatial health data infrastructure for control of Asian schistosomiasis in the People's Republic of China and the Philippines](#) *Adv Parasitol.* 2010;73:71-100.

by Malone JB, Yang GJ, Leonardo L, Zhou XN, Department of Pathobiological Sciences, Louisiana State University, Baton Rouge, LA, USA.

#### **Abstract**

This review focuses on implementing a geospatial health infrastructure for control of schistosomiasis and other helminthic infections in Southeast Asia, with special focus on the People's Republic of China and the Philippines, using a model working group approach. Health workers have lagged in utilization of geospatial analysis and widely available, low-cost spatial data resources for epidemiological modelling and control programme management. The critical limitation on development of useful health applications to date has not been the availability of geospatial data and methods. Rather, the key barriers have been the speed of adoption of geospatial analysis tools by health scientists and the quality of geographic information system (GIS)-friendly medical databases.

Regional GIS applications on Asian schistosomiasis are reviewed to illustrate recent geospatial health analysis applications. A model programme is presented for implementation of training programmes and establishment of regional working groups to facilitate development and use of geospatial health infrastructure resources by health workers in Southeast Asia.

### [Excellence in Cartography](#) – a brief blog article

Maps are sometimes representations of statistical analyses, sometimes representations of physical terrain we can actually go examine, and sometimes they are depictions of ideas that combine all of this. Halcrow engineers and scientists in the Geospatial Group always strive to produce cartography with a rich vein of content, as well as a pleasing and easily read design. Danielle Hartman, of Halcrow's New York City office has been recognized for her ability to do this extraordinarily well.

Source: Halcrow Geospatial blog & [Geospatial World Weekly](#) (August 16)

### [Using GIS to create an agro-climatic zone map for Soroti district](#) by **Balungi Francis**, Makerere University Department of Surveying, Faculty of Technology, Uganda

#### **Abstract**

This project examines the use of GIS in creating an agro-climatic zone map. The map recognises that the major aspects of climate that affect plant growth are moisture availability and temperature. The agro-climatic zones are therefore specific combinations of moisture availability zones and temperature zones. The project was undertaken following the variability of rainfall and recurrent droughts in the country that affects the lives of millions of people whose livelihood is mainly dependent on agriculture. The project is of much importance as it is aimed at showing areas that are climatologically suitable for particular crops and also as a guide to the work of planners and farmers. The goal of this study is to extrapolate empirical research findings from the map for agric-environmental experimental design and as a framework for assessment of the impact of climate change on Soroti region agriculture. The objectives were achieved using Idris32 software incorporating various methods. A temperature map was created from a derived relationship (regression equation) between temperature and elevation using tabular temperature and elevation data obtained from four weather stations. The temperature zones were created by reclassifying the temperature map. An evaporation map was created using a published relationship between evaporation and temperature. The moisture availability map was created by getting the ratio of rainfall map to evaporation. Moisture zones were created by reclassifying the moisture availability map. An agro climatic zone map was then created through a combination of the temperature zones with the moisture zones. The agro climatic zone map was classified using the Köppen and Thornthwaite agro climatic classification system. Finally crop growth in each zone was selected through a comparison of the temperature and moisture requirements for each crop based on published FAO data (climatic adaptability of crops) with the prevailing temperature and moisture conditions in each zone. The agro climatic zones were suitable for the growth of cassava, sweet potatoes, rice, sorghum, maize, millet and ground nuts. The results show that zones in the humid and dry-sub humid regions are highly suitable for agricultural production than those in the semi arid regions. The results are recommended for use on a larger scale only if they are accurate and representative of the climatic conditions in the selected region of the country. However, if many alternatives are to be included based on the stated criterion, an agro-ecological zone map should be created.

### [Indoor Positioning and Navigation – The Next LBS Frontier?](#) by Joe Francica

Source: Directions Magazine

[Back to contents](#)

### [Re-thinking Basemaps \(Do we need a paradigm shift?\)](#) by Lars Brodersen

Have you ever considered why the politicians don't pay the same attention to our maps as we do and as we think they should do? They know very well how to use complex spread-sheets, so why do they turn their backs to our wonderful maps? Are the politicians 'stupid'? Are the politicians ignorant? Or, are our maps not as good as we think they are? Are they really of no use (our maps, not the politicians)? There are many possible answers to the question.

Source: V1 Media

### [How creepy does the use of geospatial technology need to get before there's a major backlash?](#)

by Matt Ball

With the school year started, I embellished a description of the parent web portal at my sons' school, indicating that in addition to providing us feedback on assignments and tracking their performance, there were also sensors throughout the school that would track and report their movements and could tell if they were paying attention. My oldest is wise to my ways, but before confessing, the eyes on my youngest got really wide, and he exclaimed, "That's creepy!"

Source: Spatial Sustain blog

[Back to contents](#)

## Books and Journals

While checking out another item we came across the WALIS (Western Australia Land Information System) [website](#). Their hard copy magazine, *WALIS News*, is also available in [PDF format](#).

### [SERVIR-Africa community news \(July 2010\)](#)

#### [Map Scripting 101](#)

*Map Scripting 101* uses a project-based approach to teach you how to create useful and fun online map mashups like weather maps and local concert trackers. Author Adam DuVander shows you how to use Mapstraction, an open source JavaScript library, to create and manipulate basic maps by setting zoom levels, showing and hiding markers, geocoding addresses, customizing maps for visitors based on their locales, and so on. You'll also learn to handle complex GIS (geographic information system) data and formats like KML and GeoRSS, and to create graphical overlays to make sense of data and trends. This is a perfect book for any web developer, whether their goal is to build a map to track earthquakes around the world, or to simply mark the best coffee shops in town.

[Back to contents](#)

## Just for Fun!

### [What happened to the Big Map?](#)

The display at the [WALIS International Forum 2009](#) included a large Australian floor map. In order to satisfy the many requests WALIS decided to give it away to a school in a ballot and the lucky school was Perth Modern School.

Source: [WALIS News, issue 35 \(Winter 2010\)](#) page15; photo credit: Timography & WALIS.



### [Court Says GPS Surveillance Requires Warrant](#)

A United States appeals court today struck down a man's conviction and life sentence in a drug case on the grounds the police unlawfully tracked his movement with a GPS device that had been installed without a warrant on his vehicle.

The unanimous three-judge ruling in the U.S. Court of Appeals for the D.C. Circuit said that law enforcement officers must obtain a warrant to use GPS tracking equipment. The appeals court said the government violated the Fourth Amendment and reversed the conviction of the defendant, Antoine Jones, former co-owner of a night club in Washington.

Source: BLT blog

[Back to contents](#)

### [It's a smaller moon we see](#)

Newly discovered cliffs on the moon indicate that it has shrunk in the past as it cooled off, and that it might even still be shrinking, researchers say.

The shrinkage isn't dramatic — perhaps no more than a 300-foot reduction in the moon's 2,000-mile diameter — but it is enough to cause cracks to form just like they would in the rind of a dried-up orange.

Source: LA Times & [Science 20 August 2010: Vol. 329, no. 5994, pp. 936 - 940](#)

### [Sheep in Space](#) (Not to be confused with [the 1986 film "Dogs in Space"](#))



It's pretty amazing what you can see from space.

Luke Barrington was browsing through the almost half a million tags that our virtual explorers have contributed, searching for hot-spots: images where lots of users have all agreed that there could be something interesting.



10 people have tagged the above satellite image, some labeling items in the center as "modern structure" or as "other."

Looking closer, he was intrigued: there seems to be a circular pattern of black and white dots. Could they be rocks? Buildings? Or markers for some ancient site?

While puzzling over this image, he happened to glance out the door of their ger.

Source: Luke Barrington blog ([Field Expedition: Mongolia](#))

[Back to contents](#)

## Training Opportunities

### [Master's Program in Photogrammetry and Geoinformatics at Stuttgart, Germany](#)

International Master's Course Photogrammetry and Geoinformatics offered by Hochschule fuer Technik Stuttgart, Germany

Tuition and Fees - 613 Euro for each semester

Please contact with Prof. Dr. D. Schroeder, phone +49 711 8926 2612, fax +49 711 8926 2556

[email](#)

### [NEW Master's, Diploma & Certificate Courses in Cartography & Mapping](#)

The Department of Geographical & Earth Sciences, University of Glasgow, UK has added TWO new MSc courses to its **Post-Graduate Taught Programme for Cartography and Mapping**:

1. Applied Population & Statistical Mapping 2. Landscape Monitoring & Mapping

Existing courses include: Geoinformation Technology & Cartography, Geospatial & Mapping Sciences

Details and contact information can be found at: <http://www.ges.gla.ac.uk:443/degrees/postgraduate/courses>

The Courses begin in SEPTEMBER 2010. A limited number of Scholarships will be available for all of these programmes.

Master's courses may be available full or part time, it may also be possible to study for a Postgraduate Diploma or Certificate, or take specific courses or sub-units as CPD.

### [United Nations University and ESRI to Collaborate on GIS Research and Training](#)

ESRI and United Nations University (UNU) recently approved a memorandum of understanding (MOU) at the university's headquarters in Tokyo, Japan. They will collaborate on research, create Centres of Excellence, promote the exchange of graduate students and provide GIS training opportunities within and by UNU.

Source: GISLounge

### [The New Professional Spatial Information Programs at the University of Melbourne](#)

**Master of Engineering (Geomatics)**

**Master of Spatial Information Science**

This item was extensively covered in [Volume 7, issue 3 \(March 2010\)](#) of the SDI-AP newsletter and is here reprinted in abbreviated form.

[Back to contents](#)

### [Forestry GIS User Group Opens for Membership](#)

ESRI has launched a new user group specifically for its forestry and timberland management customers. The newly formed ESRI Forestry Group (EFG) will build opportunities for foresters to learn about business solutions, network with like-minded professionals and develop professional growth.

Source: Vector1Media

### [UNIGIS MSc now in Australia](#)

The international UNIGIS MSc postgraduate degree is now offered in Australia through the UNIGIS study centre at the University of Canberra, ACT. Students are invited to enrol in a joint program combining the capacities from the University of Canberra and University of Salzburg, Austria.

This new UNIGIS study centre is led by Prof. George Cho at the Institute of Applied Ecology, University of Canberra. The program offers in-service distance education for professionals interested in GIS and Geoinformatics. Courses towards the MSc were launched with an on-site workshop in 2009 and lead students to obtain recognised international academic degrees.

Source: <http://www.unigis.net>

### [Guide to College Majors in Geographic Information Systems](#)

#### [Trimble Seminars](#)

Trimble will launch a new series of web seminars for people with an interest in GPS and GIS. They will be offered every 4-6 weeks. The schedule for upcoming 'webinars' includes: an introduction to the new Yuma rugged tablet computer and VRS. Visit the [Trimble website](#) for more information.

Source: [Asian Surveying & Mapping](#)

#### [Web Map Gallery](#)

[Web Map Gallery](#) | [Contribute Web Map](#)

Web Map Gallery is a resource for readers to see what others geospatial professionals have created. We encourage you to contribute to the gallery so that all may benefit from the breadth of geospatial applications now being used in many industries. Please feel free to use the link "Contribute Web Map" above to add your own Internet-based mapping application with as much information as necessary to explain your contribution.

Source: [Directions Magazine](#)

#### [GIS software training by ESRI](#)

ESRI now offers access to more than 40 beginning, intermediate and advanced instructor-led GIS courses through a variety of training alternatives and venues including

- Video teleconferencing training at the ESRI learning centers
- Virtual Classroom **online training delivered to students' own workplaces or home computers**

Source: GIS News

#### [ESRI Training Program](#)

ESRI in Singapore has released its training schedule for the first part of 2010, up to next February. Seats are reserved on a first come, first served basis, upon registration. Training prerequisites will be as indicated in the course notes. For course outlines, contact [ESRI](#) direct.

#### [Geospatial technology update seminars scheduled for SE Asia](#)

ESRI and GIS Development will present free seminars to mapping agencies in Southeast Asia. The Geospatial Technology Update seminars will take place in Jakarta, Indonesia; Bangkok, Thailand; Hanoi, Vietnam; Kuala Lumpur, Malaysia; and Manila, Philippines. The seminars commenced January 2010. The seminars will outline technology trends in the geospatial community including how to take advantage of the Web 2.0 environment, the integration of topographic and remotely sensed data and how to best offer published data via cloud computing.

Mapping organisation staff members and managers and their affiliates, including national hydrographic and aeronautical agencies, are invited to attend the free, daylong program in their respective cities. For more information and to register, visit <http://www.GISdevelopment.net/GTUS>. For more information on how mapping agencies use GIS software, visit [www.esri.com/maps](http://www.esri.com/maps)

### [FOSS 4G 2010 Workshops - Barcelona, Spain.](#) – [Workshop webpage](#)

This item was extensively covered in [Volume 7, issue 3 \(March 2010\)](#) of the SDI-AP newsletter and is here reprinted in abbreviated form.

#### **September 6 Workshops (Monday afternoon, 15-18h)**

- W-01: Web mapping with GeoServer
- W-02: gvSIG 1.9 user workshop
- W-03: Setting up an OpenStreetMap rendering toolchain
- W-04: Introduction to PostGIS
- W-05: Introduction to the Mapbender geoportal framework
- W-06: Solid web mapping with Python
- W-07: Practical introduction to ZOO, the powerful WPS platform

#### **September 7 Workshops (Tuesday morning, 9-12h)**

- W-08: Getting started with MapServer
- W-09: Quantum GIS and PostGIS: Solving spatial problems and creating web-based analysis tools
- W-10: FOSS4G routing with PgRouting tools, OpenStreetMap road data and GeoEXT
- W-11: Working with OpenLayers
- W-12: GeoNetwork for dummies, or how to setup an SDI in 3 hours
- W-13: Geospatial for java
- W-14: Practical introduction to GRASS

### [FOSS 4G 2010 Tutorials - Barcelona, Spain.](#) – [Tutorials webpage](#) (7 – 9 September)

Source: [FOSS4G 2010 press release 5](#)

### [Transparency in Land Administration - \(2 weeks\)](#) - Ardhi University TANZANIA (18 – 31 November, 2010)

Course objectives:

Transparency in land administration is a critical factor and a precondition for enhanced good governance. It is also a major step towards elimination of corruption in land administration. The objectives of this course are;

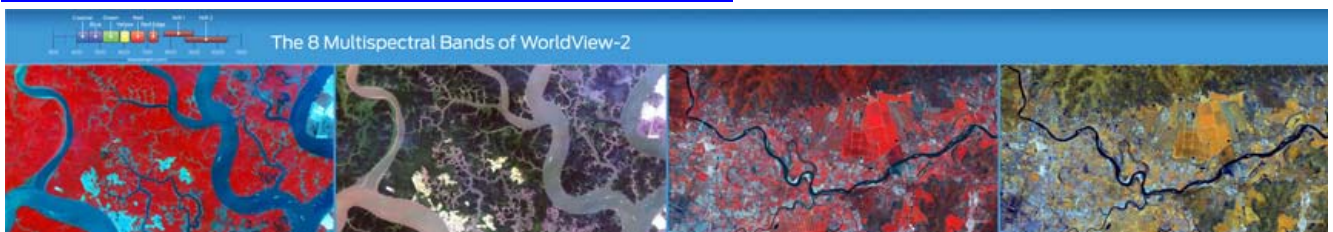
- To share innovative tools to achieve tenure security and transparency in land administration;
- To enhance participants' awareness and understanding of transparency, disclosure management and flow of information in land administration matters; and
- To inculcate knowledge on tools required to engender and operationalise and monitor transparency in land administration.

### [5th Thailand GIS for Disaster Risk Management Course](#) Bangkok, Thailand, 16-27 August

[Back to contents](#)

## Funding Opportunities, Awards, Grants

### [DigitalGlobe 8-Band Research Challenge - Call for Entries](#)



For the first-time ever, remote sensing and GIS researchers have access to high-resolution imagery with 8 spectral bands, including coastal blue, yellow, red-edge and NIR2. Do you have a valuable application to use this new data?

Enter the 8-Band Challenge to get free imagery for your research and a chance to win \$5,000 and present your findings at Geospatial World Forum in January!

**Unfortunately the closing date for entry was 31 August.**

[Back to contents](#)



### [Trimble Student Paper Competition for Surveying](#)

Trimble is holding its 2010 Surveying Student Paper Competition. The winning student author will have the opportunity to present their survey application paper at Trimble Dimensions 2010 in Las Vegas, Nevada. The winner will receive a trip to the conference plus 3 nights' accommodations to take part in Trimble's internationally recognized conference with surveying professionals from around the world. In addition, the winning student's school will also receive a Trimble® R8 GNSS System.

The announcement of the winner will be September 22nd, 2010.

### [Wanted: Innovative Ideas for Applications in Satellite Navigation €20,000 grand prize](#)

The seventh European Satellite Navigation Competition (ESNC) has commenced its search for applications in satellite navigation at <[www.galileo-masters.eu](http://www.galileo-masters.eu)>. Until the end of July, innovators all over the world will have the chance to develop their ideas for new products and services based on satellite positioning.

### [ESRI's Mashup Challenge Winners Announced](#)

Links to the winning mashups and related videos can be found at <http://www.esri.com/apimashup>.

Source: [Directions Magazine](#)

### [Asia - RS and GIS Scholarships](#)

Remote Sensing and GIS field of study at Asian Institute of Technology (Thailand) has recently announced scholarships for this coming August 2010 semester. These scholarships will be granted to students who have excellent study records. Please take your chance to apply for this scholarship.

### [MapGuide Project Sponsorship Program](#)

The MapGuide Project Steering Committee is pleased to announce the MapGuide Open Source Project Sponsorship and Donation program. This program provides a source of funding to help ensure the continued success of MapGuide Open Source. The full details of the program are available at the URL link above.

Source: [OSGeo](#)

### [Earn a PhD in Fuxin](#)

Professor Xu Aigong is seeking PhD students to study under him at Liaoning Technical University in Fuxin, China. His subjects of interest include geodesy and geomatics, GNSS, GIS and intelligent transportation systems. Students may be eligible for support under the 2010 Liaoning Provincial Government Scholarship Program. Email [Prof. Xu](mailto:Prof.Xu) for details

### [ICIMOD Photo Contest on Mountain Biodiversity](#)

ICIMOD is organising a Photo Contest on 'Mountain Biodiversity' to mark the International Year of Biodiversity 2010 and raise awareness of the vital role that mountain biodiversity plays in sustaining life in the Hindu Kush Himalayan region and beyond. The themes of the competition reflect the theme of the [International Year of Biodiversity 2010](#) 'Biodiversity is life. Biodiversity is our life' , and the theme for the [International Day for Biological Diversity 22 May 2010](#) 'Biodiversity, Development and Poverty Alleviation'.

Regional Scope

To qualify for the competition, images must be taken within the Hindu-Kush Himalayan portion of ICIMOD's regional member countries - Afghanistan, Bangladesh, Bhutan, China, India, Myanmar, Nepal, and Pakistan - as shown in the [ICIMOD regional map](#).

### [ESRI Australia supports Spatial Technology in Schools competition](#)

ESRI Australia is proud to once again support the annual Spatial Technology in Schools competition. The competition sees students from across Australia use GIS technology in challenging, informative and fun ways to assist in solving a problem from any area of the curriculum.

The competition is conducted in each State and Territory of Australia, and New Zealand, with a prize awarded for the best project in each region. The winners of each region are then judged to determine the Regional Winner.

ESRI Australia is providing free ArcGIS software licences for schools entering in the competition. By using the same software that is used by millions of GIS professionals around the world every day, students will gain real insights into how GIS is used to solve real-world issues.

Participating schools can request their free licence by visiting <[www.esriaustralia.com.au/esri/6176.html](http://www.esriaustralia.com.au/esri/6176.html)> or by contacting ESRI Australia Connect via email at <[connect@esriaustralia.com.au](mailto:connect@esriaustralia.com.au)>.

[Back to contents](#)

## Employment Opportunities

**Spatial Jobs Online (Australia)** Because of tight application closing dates the editors provide these websites for employment seekers to access directly: < <http://www.spatialjobs.com.au/> > and < <http://www.GISjobs.com.au> >

### Looking for a GIS - Geomatics Job in Canada?

Here are some links: 1) [Geomatics Canada Job Site](#); 2) [GeographyJobs.ca](#); 3) [GoGeomatics Canada](#); 4) [Geomatics Employment Center](#)

Source: V1 Magazine

[Back to contents](#)

## Conference Proceedings

### [Live webcasts of the Second Open Source GIS Conference - 22nd June 2010](#)

#### [gvSIG Desktop and gvSIG Mobile workshops](#)

The gvSIG workshop that was held at OSGIS 2010 (Nottingham - United Kingdom) in June, is available in the gvSIG website. It contains a course about [gvSIG Desktop](#), and another one about [gvSIG Mobile](#).

#### [Report on the Fourth Central Asia GIS Conference](#)

#### [The 16th Session of the Asia-Pacific Regional Space Agency Forum \(APRSAP-16\)](#)

#### [The Australian and New Zealand Map Society Conference 2010](#)

[Back to contents](#)

## Conferences, Events

For upcoming events of global or major international interest, please visit the [upcoming conference list](#) on the GSDI website.

**The editors welcome news of conferences & events from the newsletter subscribers**

Date	Location	Event
<b>September 2010</b>		
1-3 September	Paris	<a href="#">PCV2010</a> PCV 2010 will be held in next year. It is an ISPRS selective conference covering all the aspects of computer vision and image analysis dealing with geographic data. PCV focuses on the processing of images and 3D point clouds, acquired from satellites, aircraft or from street level acquisition systems. <b>Important dates:</b> 1 March, 2010: for peer reviewed papers; 1 April: abstracts of non peer-reviewed papers. 31 August is tutorial day. Conference dates are 1-3 September, 2010. Visit the <a href="#">Website</a> for further details.
1-3 September	Seoul, Korea	<a href="#">SMART KOREA 2010</a> The Korean government will host "2010 Smart Korea", the biggest geospatial symposium and exhibition in South Korea, on September 1-3, 2010 at Korea International Exhibition Center

[Back to contents](#)

		(KINTEX).
<b>6-9 September</b> <b>“UPDATED”</b>	Barcelona, Spain	<b><u>FOSS4G 2010</u></b> A listing of <i>Abstracts &amp; Presentations</i> is <a href="#">available</a> . <a href="#">Final program now available</a> 6-7 Sep 2010, FOSS4G Workshops – <a href="#">Workshop webpage</a> 7-9 Sep 2010, FOSS4G Presentations and Tutorials - <a href="#">webpage</a> 10 Sep 2010, FOSS4G Code Sprint Contact <a href="#">Conference Chair</a> for further details (Lorenzo Becchi)
<b>6-12 September</b> <b>“NEW”</b>	Serres, Greece	<b><u>7th European GIS in Education Seminar</u></b>
<b>15-17 September</b> <b>“NEW”</b>	Skopje, Republic of Macedonia	<b><u>International Conference on SDI 2010</u></b>
<b>19-21 September</b> <b>“NEW”</b>	Yokohama, Japan	<b><u>G-spatial EXPO</u></b>
<b>20-3 September</b>	Gaeta, Italy	The 10th Anniversary <b><u>International Scientific and Technical Conference "From imagery to map: digital photogrammetric technologies"</u></b> . <i>More information about the conference will be available soon on the official site of the Conference.</i> <a href="#">Contact</a>
<b>21-22 September</b> <b>“NEW”</b>	Perth, Australia	<b><u>GIS in Mining and Exploration 2010</u></b>
<b>22 September</b>	Washington, DC	<b><u>LI GeoCloud 2010</u></b> The first conference dedicated to geospatial cloud computing <b>Call for presentations now open</b> If you would like to submit a presentation for consideration, please use our <a href="#">submission form</a> to provide an outline of the topic you would like to present. Preference will be given to sponsors of the conference. Registration for the conference will be \$595 but early registration will be held June 1 through August 30. The cost for early registration will be just \$495.
<b>22-6 September</b>	Toyama, Japan	<b><u>Asia-Pacific Radio Science Conference 2010 (AP-RASC10)</u></b> <a href="#">Contact</a>
<b>28-9 September</b> <b>“NEW”</b>	Lisbon, Spain	<b><u>NATURE-SDIplus 2nd Conference “SDI for Nature Conservation”</u></b> jointly organized with <b><u>VESTA-GIS Final Conference “A Training Framework for ESDI”</u></b>
<b>28-30 September</b>	Vienna, Austria	<b><u>Geospatial intelligence Summit</u></b> <b>Key topics:</b> <ul style="list-style-type: none"> <li>• Developing an effective GIS strategy</li> <li>• How to maximise co-operation across national defence and security organisations</li> <li>• How to create a national spatial data infrastructure</li> <li>• Moving from geo-information to geo-intelligence</li> <li>• Developing an open enterprise architecture</li> <li>• Achieving true interoperability on a national and international level</li> <li>• Meet the needs of multiple stakeholders</li> <li>• Learn about the evolving relationship between military, intelligence and civilian agencies</li> </ul>
<b>28 September</b> <b>1 October</b>	Orlando, Florida	<b><u>GIS Pro 2010</u></b> <span style="float: right;">URISA’s 48th Annual Conference</span>
<b>29 - 30 September</b>	Kuala Lumpur, Malaysia	<b><u>Geospatial Defence and Intelligence Asia 2010</u></b>

[Back to contents](#)

<b>30 September 1 October</b>	Kiev, Ukraine	<p><b><u><a href="#">IV Ukrainian Scientific and Practical Conference “National Mapping: State, Problems, and Development Prospects” (National Mapping - 2010)</a></u></b></p> <p>Paper deadline: 30 June 2010          Registration deadline: 15 September 2010          Organized by: State Service of Geodesy, Cartography and Cadastre of Ukraine, Institute of Geography of National Academy of Sciences of Ukraine, Ukrainian Cartographic Association and GIS-Association of Ukraine</p> <p><b>Sessions. The following topics will be addressed:</b></p> <ol style="list-style-type: none"> <li>1. National infrastructure of geospatial data.</li> <li>2. Remote sensing of the Earth.</li> <li>3. Thematic and atlas mapping.</li> <li>4. Geographical information systems (digital cartography, cartographical information in Internet, digital maps in navigation, navigating systems).</li> <li>5. The copyright in cartography.</li> <li>6. History of cartography.</li> </ol> <p>Conference working languages - Ukrainian, Russian, English.          The presented papers will be published in the proceedings of the Conference.          Registration payment: 20 Euros includes entry to all sessions, proceedings materials, meals, coffee breaks.          For all questions: contact:  <a href="#">Oksana Degtyar</a> or &lt;<a href="mailto:odegtyar@rambler.ru">odegtyar@rambler.ru</a>&gt; or <a href="#">Victoria Molochko</a>,</p>
<b>October 2010</b>		
<b>4 – 6 October</b>	Katmandu, Nepal	<p><b><u><a href="#">Benefiting from Earth Observation</a></u></b>  <b>Contact:</b> <a href="mailto:symposium2010@icimod.org">symposium2010@icimod.org</a></p>
<b>5 – 7 October</b>	Cologne, Germany	<p><b><u><a href="#">InterGEO 2010</a></u></b></p>
<b>7-9 October “NEW”</b>	Allahabad, Uttar Pradesh, India	<p><b><u><a href="#">Geospatial Technologies for Sustainable Planet</a></u></b></p>
<b>10 – 15 October</b>	Songdo Convensia, Incheon, Republic of Korea	<p><b><u><a href="#">SPIE Asia-Pacific Remote Sensing</a></u></b>          Monitoring the Human Impact on the Natural Environment of the Coastal Zone          10-15 October 2010</p>
<b>12 – 14 October</b>	Bonn, Germany	<p><b><u><a href="#">UN-Spider Workshop on Disaster Management &amp; Space Technology</a></u></b>  <b>Contact:</b> <b>Ms. Natalie Epler</b>, e-mail: <a href="mailto:natalie.epler@unoosa.org">natalie.epler@unoosa.org</a></p>
<b>19 – 22 October</b>	Singapore	<p><b><u><a href="#">GSDI 12 World Conference – Realising Spatially Enabled Societies</a></u></b>          In conjunction with the <b>16th PCGIAP Annual Meeting</b>.  <b>ALSO:</b> there will be a full day pre-conference workshop for PhD students pursuing research on SDI related topics which will be similar to the highly successful workshop held in conjunction with GSDI 11.</p>
<b>19-22 October “NEW”</b>	Athens, Georgia, USA	<p><b><u><a href="#">2010 Geospatial Conference</a></u></b> <a href="#">Contact</a></p>
<b>24-27 October</b>	Stellenbosch, Cape Town, South Africa	<p><b><u><a href="#">22nd International CODATA Conference</a></u></b>          Theme: Scientific Information for Society: Scientific Data and Sustainable Development</p>
<b>24-27 October “NEW”</b>	Abu Dhabi, UAE	<p><b><u><a href="#">GIS for National Security, Defence &amp; Emergency Management Conference</a></u></b> <a href="#">Contact</a></p>
<b>25-29 October</b>	Addis Ababa, Ethiopia	<p><b><u><a href="#">8th International Conference of the African Association of Remote Sensing of the Environment (AARSE)-2010</a></u></b>          Theme: Earth Observation for Africa's Development Agenda 2010</p>

		<p>Abstract deadline: 30 April 2010. <a href="#">Send to</a></p> <p>Final paper submission: 1 September 2010.</p> <p><b>The four major scientific sub-themes of the conference are:</b></p> <ul style="list-style-type: none"> <li>• Food and Water Security</li> <li>• Energy Resources</li> <li>• Disaster Risk Reduction</li> <li>• Marine and Coastal Management</li> </ul> <p><b>Conference sub-themes of a more operational nature are:</b></p> <ul style="list-style-type: none"> <li>• Capacity-building: achievement and challenges</li> <li>• Spatial Data Infrastructure, SDI</li> <li>• Space Policy in Africa</li> <li>• National and regional programs and projects</li> <li>• Products</li> </ul>
<b>26-28 October "NEW"</b>	Rome, Italy	<p><a href="#">2010 ESRI Europe, Middle East &amp; Africa User Conference</a></p> <p>Closing date for presentations – 8 September. <a href="#">Contact</a></p>
<b>November 2010</b>		
<b>31 October - 3 November</b>	Denver, Colorado	<a href="#">US - GSA Annual Meeting</a>
<b>3-4 November</b>	Berlin, Germany	<a href="#">5th 3D Geoinfo Conference</a>
<b>5 – 6 November</b>	Kaohsiung, Taipei	<p><a href="#">ASIA GIS 2010</a> <a href="#">Contact us</a></p> <p>The theme for this conference is <b>GIS and Cloud Computing</b>. Cloud computing is a hot topic in 2010 and GIS is moving to the cloud computing paradigm. Invited keynote speakers will present the future trend of cloud computing and its application in GIS.</p> <p><b>Key Dates:</b></p> <p>Deadline for Early Bird Registration 31 August Paper Submission 31 August</p>
<b>8 – 11 November</b>	London	<p><a href="#">The 5th International Conference for Internet Technology and Secured Transactions (ICITST-2010)</a></p> <p>Technical Co-Sponsored by IEEE UK/RI Communications Chapter, <a href="#">Contact</a></p> <p><b>IMPORTANT DATES</b></p> <p>Early Registration Deadline: January 01 to July 31, 2010 Late Registration Deadline: July 31 to November 08, 2010</p>
<b>9 – 11 November</b>	Taipei, Taiwan	<p><a href="#">2010 The 7th International Symposium on Cadastral Survey</a>. Main Topic: The Development of Cadastral Survey in New Generation.</p> <p>Contacts: Geographic Information Systems Research Center of Feng Chia University. Email: <a href="mailto:joy@gis.tw">joy@gis.tw</a></p>
<b>15 – 19 November</b>	Orlando, Florida	<p><a href="#">ASPRS/CaGIS 2010 Specialty Conference</a> in conjunction with a special joint meeting of ISPRS Technical Commission IV &amp; AutoCarta 2010</p> <p><b>Important Dates</b></p> <p>May 1, 2010 - Workshop proposals due May 12, 2010 - Abstracts for papers and posters due June 15, 2010 - Notice of acceptance of all proposals August 15, 2010 - Presenter registration due September 13, 2010 - Final papers due (to be considered for publication)</p>
<b>23 – 25 November</b>	Cape Town, South Africa	<a href="#">Map Africa 2010</a>
<b>November - Dec 2010</b>		
<b>23 – 26 November</b>	Melbourne, Australia	<a href="#">17th Asia Pacific Regional Space Agency Forum</a>

[Back to contents](#)

<b>28 November – 3 December</b>	Sydney Australia	<a href="#">OGC's Meeting on Business Value of Geospatial Standards</a> The Open Geospatial Consortium (OGC) has announced the event, Deriving business value from geospatial standards to be held on June 17, 2010 at the NOAA Silver Spring offices in Maryland. OGC invites government officials, policy makers, senior managers, as well as sales and marketing professionals from across the industry to attend a series of business meetings during the event. The event is part of the OGC's quarterly Technical Committee and Planning Committee meetings. Steven Ramage, OGC's Executive Director, Marketing and Communications said, "I would like to invite professionals to attend a one-day business session at a TC/PC meeting. This invitation is open to OGC members and non-OGC members who want to learn more about the business value of geospatial technology. Silver Spring is the first such meeting and more one-day business sessions are planned for the OGC meetings in Toulouse, France in September and in <b>Sydney, Australia in November-December 2010.</b> "
<b>29 November – 3 December</b>	Tunisia	<a href="#">Fifth Session of the International Conference Geotunis 2010</a>
<b>30 November – 1 December</b>	The Hague, Netherlands	<a href="#">European LiDAR Mapping Forum Conference and Exhibition</a>
<b>1 – 3 December</b>	Valencia, Spain	<a href="#">6th gvSIG Conference: Knowledge for change</a> The call for papers is now open. As of today communication proposals can be sent to the <a href="#">email address</a> where they will be evaluated by the scientific committee as to their inclusion in the conference program. There are two types of communication: paper or poster. Information regarding to regulations on communication presentations can be found in the <a href="#">reports section</a> . Abstracts will be accepted until September 21st.
<b>December 2010</b>		
<b>22 December</b>	Kyoto, Japan	<a href="#">Japan - Topic Maps Japan 2010</a>
<b>January 2011</b>		
<b>18-21 January</b>	Hyderabad, India	<a href="#">MapWorld Forum 2011</a> <a href="#">Contact</a> <b>NOTE NAME CHANGE TO:</b> <a href="#">GEOSPATIAL WORLD FORUM 2011</a> Last date for <a href="#">abstract submission</a> has been extended to 30th September, 2010
<b>February 2011</b>		
<b>7 – 9 February</b>	New Orleans, USA	<a href="#">11th International LiDAR Mapping Forum 2011</a>
<b>April 2011</b>		
<b>10 – 15 April</b>	Sydney, Australia	<a href="#">34th International Symposium on Remote Sensing of Environment (ISRSE)</a> Abstract submissions close on 1 September
<b>July 2011</b>		
<b>9 – 12 July</b>	San Diego	<a href="#">Esri and ACSM - Event for Surveyors and Mapping Professionals</a> Abstract submission deadline is December 6, 2010.
<b>9 – 12 July</b>	San Diego	<a href="#">ESRI International USER CONFERENCE</a>
<b>August 2011</b>		
<b>23 – 25 August</b>	Perth, Australia	<a href="#">7th International Symposium on Digital Earth (ISDE7)</a> Held in conjunction with <a href="#">WALIS Forum 2011</a> and the <a href="#">2011 NRM Conference</a>

<b>November 2011</b>		
<b>14 – 18 November</b>	Santiago, Chile	<a href="#">UGI 2001 International Geographic Union “Regional Geographic Conference”</a> <a href="#">Brochure &amp; Call for Papers</a> <a href="#">Contact</a>
<b>August 2012</b>		
<b>24 August – 3 September</b>	Melbourne, Australia	<a href="#">XXII International Society for Photogrammetry &amp; Remote Sensing Congress</a> Email: <a href="mailto:isprs2012@icms.com.au">isprs2012@icms.com.au</a>
<b>2014</b>		
	Malaysia	Malaysia will be hosting the (International Federation of Surveyors) FIG Congress in 2014. The decision was taken at the recently concluded FIG Congress 2010 in Sydney, Australia.

[Back to contents](#)

To subscribe to SDI-AP, please do so [online](#). To contact please [email](#) the editors.  
[Global Spatial Data Infrastructure Association](#).

Please mention SDI-AP as a source of information in any correspondence you may have about items in this issue.

**DISCLAIMER:** The Editor and Web Host will not be held liable for any errors, mistakes, misprints or incorrect information.

Copyright © 2010. All rights reserved.



[Back to contents](#)