

Global Spatial Data Infrastructure

Latin America and the Caribbean Newsletter

SDI-LAC

April

2012

Vol. 9, No.4

Spatial Data Infrastructure-Latin America and the Caribbean (SDI-LAC) is a regional, monthly, and free, electronic newsletter from the [Global Spatial Data Infrastructure Association](#) (GSDI). It focuses on aspects related with Spatial Data Infrastructure, and on GIS, remote sensing, and data management issues, related with SDI in Latin America and the Caribbean. It aims to raise awareness, provide useful information to strengthen national SDI initiatives, and support synchronization of regional efforts.



Global Spatial Data Infrastructure

GSDI

[GSDI Definition](#)

The [Pan-American Institute of Geography and History](#) (PAIGH), member organization of GSDI, and the [Permanent Committee on Geospatial Data Infrastructure for the Americas](#) (PC-IDEA), promote SDI development in the region. The newsletter is prepared by PAIGH for GSDI.

[Message from the Editor](#)

[Input to this Issue](#)

[Global and Regional SDI, News, Presentations](#)

[IGS News, Links, Publications](#)

[National SDI, News, Links, Presentations](#)

[Articles and Publications of the Month](#)

[Geospatial Research, Applications, Software, Data](#)

[Training and Funding Opportunities, Awards](#)

[Employment Opportunities](#)

[Other](#)

[Americas: Conferences, SDI Events \(Year 2012\) \(Year 2013\)](#)



Message from the Editor

This SDI-LAC issue highlights the following news: The **Global and Regional SDI** section comprises Calls to Host GSDI 14 and GSDI 15, and notes on Closing the Economic Gap for Participation by Geospatial Specialists in Global Organisations; Call for Participation in GEOSS Pilot AIP-5; the WMO Information System (WIS); the 4th PC-IDEA Workshop and Planning Meeting; the Pan American Technical Cooperation Projects 2013; Upcoming launching of the US Government Geoplatform; IGN France International Seminar on NSDI awareness in Africa; and relevant conferences to take place worldwide. The **IGS section** includes a short call for membership. The **National SDI** segment covers the Spatial Data Infrastructure of the Yucatan Peninsula (IDE-PY) in Mexico. **Articles and Publications** of the month comprise remarks on the O'Reilly book on Open Government Data; MundoGEO Digital Magazine in Spanish; and a FAO Paper on MPA Governance in Brazil. **Geospatial Research and Applications** underline the Aconcagua measurement campaign 2012 in Argentina; the ONE Inter-institutional Meeting on the National Statistical System, and the CIPAF Plan for Women Working in ICT, both in Dominican Republic; A Study to Measure Value of Marine Spatial Planning; the Tropic Forest Dataset Available on ArcGIS Online; Mapping of the Moho with GOCE; and notes on OSGeo-Live 5.5 and uDig. The **Training and Funding Opportunities** section encompasses calls for international and national initiatives, among them relevant MA and short

course programs; and Calls for both Youth-Led Projects using Mapping, Geography, and GIS for Sustainable Development, and Caribbean Proposals in the Framework of the Preparatory Action "Best". Finally, several **Events taking place in the Americas** are listed in the last section.

Translation of SDI-LAC Portuguese is possible thanks to undergrad students from UNESP **Mateus de Barros Manhani** and **Esrom A. Rissate Júnior** and the cartographers engineers: **Eduardo Freitas Oliveira**, MSc in GIS, editor of the portal MundoGEO and magazine MundoGEO; **Silvane Paixão**, MSc in Geodetic Sciences and Geoinformation Technologies, PhD in Land Administration and Land Information Management; **Camila Bassetto Guedes**, advisor of the Operations Department of the Air Space Control (in Spanish DECEA), **Juan Carlos Gironda Mamani**, a consultant in Geotechnology and IT solutions for Geoinformation, **Annette Pic**, MSc in Remote Sensing; **Edilce Figueiredo Burity**, MSc in Computer Systems and Technologist of IBGE/PE Geographic Information and Statistics. Under the general coordination of Silvane Paixão.

Back issues of the newsletter are at the GSDI website:

<http://www.gsdi.org/newsletters.asp>

Editor, **Nancy Aguirre**, Pan-American Institute of Geography and History (PAIGH), <http://www.ipgh.org>, cnaguirre@ipgh.org



Global Spatial Data Infrastructure Latin America and the Caribbean Newsletter

Input to this Issue

Jim Barborak	Director, Center for Protected Area Management and Training, Colorado State University, USA
Susana Barrera	Associate Professor, Department of Geography, National University, Bogota, Colombia
Santiago Borrero	Secretary General, Pan-American Institute of Geography and History, PAIGH, Mexico
Anete Berzina	Communications Specialist, European Union Representative Office, IUCN (International Union for Conservation of Nature), Brussels, Belgium
Eduardo Freitas	Correspondent member of SDI-LAC Newsletter for Brazil
Gerardo Garcia	Coordinator Pronatura Center for Conservation Information, Merida, Yucatan, Mexico
Marina Islas	Doctoral Student and Graduate Research Assistant, Department of Geography and the Environment, University of Texas at Austin, USA
Aude Areste Lamendour	Communication and marketing Manager, IGN France International, France
Douglas D. Nebert	Senior Advisor for Geospatial Technology, System-of-Systems Architect, FGDC Secretariat, USA
Viviane Prestes	MundoGEO Press, Brazil
Carlos Pretelt	Geographer, Colombia
Ralph H. Saunders	Associate Professor, Earth Sciences (Geography)/Earth & Environment California State University Dominguez Hills Carson, CA, Carson, CA, USA
Patricia Solis	Director of Research and Outreach for the AAG, USA
Louisa Wood	Head, Marine Assessment & Decision Support Programme, UNEP - World Conservation Monitoring Centre, Cambridge, UK
Kenneth Young	Chair and Professor, Department of Geography and the Environment, University of Texas at Austin, USA

[\(Back to top\)](#)

Global and Regional SDI, News, Presentations



GSDI
Global Spatial Data
Infrastructure Association



Calls to Host GSDI 14 and GSDI 15

The Global Spatial Data Infrastructure Association (<http://gsdi.org>) supports a major international geospatial conference every twelve to eighteen months. The conference is typically accomplished in affiliation with another regularly held national, regional or global geospatial conference and/or with the support of a major sponsoring organization or agency. The gathering is purposefully moved around and across the globe in order to optimally accomplish the Association's purpose of promoting international cooperation and collaboration in support of local, national and international spatial data infrastructure developments that allow nations to better address social, economic, and environmental issues of pressing importance. The locations and proceedings of the past twelve world conferences may be found at <http://www.gsdi.org/gsdiconferences>.

The thirteenth GSDI World Conference will be held in North America from 14-17 May 2012 in Quebec City Canada (See <http://www.gsdi.org/gsdiconf/gsdiconf13/>).

Ideally GSDI 14 should be held within the time frame of August through October of 2013 and GSDI 15 would be held approximately 12 to 18 months after that. The GSDI Association is inviting expressions of interest to host either of



Global Spatial Data Infrastructure Latin America and the Caribbean Newsletter

these upcoming planned conferences. Affiliation with the GSDI World conference can bring international and global attention to a national or regional geospatial conference or Spatial Data Infrastructure initiatives, attract substantial international participation and sponsorship, and increase numbers of attendees overall.

While the GSDI Association can provide substantial support services, we try to work with a competent local organizing committee that is committed to working with broad geospatial stakeholder communities and which has a proven track record of supporting large geospatial events. Many tasks must be accomplished in preparing for a successful conference. The major conference planning and implementation tasks to be accomplished by the parties are open for negotiation. Specification of these tasks is typically set forth in a written agreement between the GSDI Association and a local legal entity such as a local hosting organization or government agency.

Organizations or agencies interested in hosting the 14th or 15th GSDI World Conference should submit a brief statement of interest (1-2 pages) that includes:

- the name of the organization or government agency to serve as the local organizer for the conference,
- the name of the national, regional or global conference with which the GSDI World Conference would be affiliated (if any),
- the country, city and venue proposed for the conference (if known),
- the proposed approximate date for the conference,
- a short statement concerning the resources the local organizers should be able to contribute to the conference and past record in providing such resources,
- other pertinent information bearing on the success of the conference, and
- the name and contact details for further communications.

Please submit your brief statement of interest on or before **1 May** 2012 to mgallant@gsdi.org.

Proponents will have the opportunity to briefly present their statement of interest orally to members of the GSDI Council at its meeting on Sunday 13 May 2012 in Quebec City (a physical spokesperson is not required.) Council members will vote on the proposals and thereby indicate the preferred options with which the GSDI officers should first negotiate in selecting sites for GSDI 14 and GSDI 15.

[Closing the Economic Gap for Participation by Geospatial Specialists in Global Organisations](#)

By Harlan Onsrud (Article published *GIM International*, February 2012, Volume 26, Number 2)

From a practical perspective, geospatial agencies and individual professionals in economically challenged nations are often unable, either administratively and/or politically, to regularly pay dues to join international professional organisations. This creates a communication gap and professional learning gap for all geospatial professionals globally. As a result, the GSDI Association and the International Geospatial Society have instituted policies allowing agencies and individuals from low-income and lower middle-income nations to join the organisations for free providing they meet a number of reporting conditions that provide value to the entire global community.

To qualify for free membership of the GSDI Association (<http://gsdi.org>), a government agency from a qualifying nation needs to (a) enter a profile for the government agency in the Geographic Information Knowledge (GIK) Network (<http://giknet.org>), and (b) report on the level of the agency's spatial data infrastructure (SDI) implementation experience. Subsequent updates to these two online forms around the time of the end of each calendar year allows continuation of the government agency's full membership.

To qualify for free membership of the International Geospatial Society (<http://www.igeoss.org/join>), a geospatial specialist from a qualifying nation needs to enter a personal, professional profile in the Geographic Information Knowledge Network (<http://giknet.org>) and update it each year to maintain their membership.

A short, 8-minute video explaining the purposes and goals of the Geographic Information Knowledge Network can be found at website <http://www.youtube.com/user/spatialinnovations>.

Global Spatial Data Infrastructure

Latin America and the Caribbean Newsletter

GEO Announces Call for Participation in GEOSS Pilot with OGC Leadership

Source: OGC Press Announcement

The Group on Earth Observations (GEO) has announced a Call For Participation (CFP) in the 5th phase of the Global Earth Observation System of Systems (GEOSS) Architecture Implementation Pilot (AIP-5). The Open Geospatial Consortium (OGC)



provides leadership in AIP-5 and invites OGC members and other organizations to respond to the CFP. The CFP document is available at: http://earthobservations.org/geoss_call_aip.shtml. AIP-5 places a priority on these areas:

- Increase GEOSS capacity to support several Societal Benefit Areas (SBAs): Disasters, Health, Energy, Water and Agriculture.
- Deploy user management and authentication to support GEOSS Data-CORE
- Conduct research to be considered for the GEOSS Common Infrastructure (GCI)

Responses to this CFP are requested by **11 April** 2012. Discussion and clarification of the CFP and the initiation of AIP-5 will be the topic of weekly teleconferences. Agenda and logistics for these telecons are posted at <http://www.ogcnetwork.net/AIPtelecons>. The Point of Contact for the AIP initiative is George Percivall, gpercivall@opengeospatial.org.

WMO Information System (WIS) Now Operational

Source: GEO News (Issue #18, 7 March 2012)



World Meteorological Organization
Working together in weather, climate and water

The World Meteorological Organization (WMO) [announced on 31 January](#) that its new weather and climate information system has now become operational. Thanks to this important advance, the [WMO Information System \(WIS\)](#) promises to make a critical contribution to international cooperation on Earth observation and to serve

as an exemplar component of the Global Earth Observation System of Systems (GEOSS). Applying the same interoperability principles as those set out in the GEOSS 10-Year Implementation Plan, WIS has evolved from the closed private network that was WMO's Global Telecommunication System (GTS) to become much more accessible to users outside the traditional WMO community. In addition to providing the WMO community with access through WMO's own systems, WIS will make it easier for all GEO societal benefit areas to find and use meteorological observations and products relevant to their activities. WIS can be accessed via the GEO Portal or directly through WMO's own clearinghouses, known as Global Information System Centres. WIS is an operational system that is based entirely on the interoperable systems operated and maintained by WMO Members.

[Fourth PC-IDEA Workshop and Planning Meeting](#)

Source: <http://www.snit.cl/>



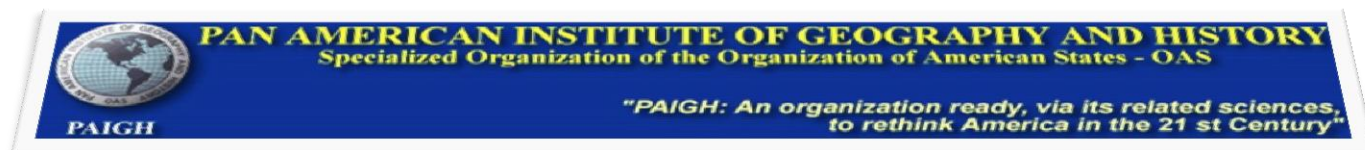
The Fourth Workshop and Planning Meeting of the Permanent Committee on Geospatial Data Infrastructure for the Americas (PC-IDEA) was held on February 8-9 in Rio de Janeiro, Brazil, bringing together representatives from Brazil, Colombia, Mexico, Canada and Chile. The event, was held at the Brazilian Institute of Geography and Statistics (in Portuguese IBGE). During the meeting main objectives for this community of experts on geospatial information were reviewed, resulting in a Work Plan for 2012-2013. Withing the Plan's objectives are included the implementation of a Capacity Building Observatory that fosters access to existing courses, and completion of a Training Plan for the Americas; Drafting of guidelines for assessing the social and economic impact of SDI; and Development of a new website that enable implementation of discussion forums, among others. Next meeting of PC-IDEA will take place on August in New York City. The Ninth Expanded Meeting will also take place this month in the city of Rio de Janeiro.



Global Spatial Data Infrastructure Latin America and the Caribbean Newsletter

Pan American Technical Cooperation Projects 2013

Source: Santiago Borrero



The General Secretariat and the Commissions of PAIGH, call for submission of applications for the Technical Cooperation Projects 2013. These projects must be directly related to the implementation of "PAIGH's Pan-American Agenda 2010-2020" (<http://www.ipgh.org>) in which at least two of the Institute's Member States need to participate. This time, priority will be given to climate change related studies; mainly directed to increasing resilience of communities, improving risk perception and visualization, increasing local knowledge for spatial information production; and new land use related research and evaluation proposals.

Project Applications that support Member States of PAIGH on the following topics will also be considered:

- Planned development of their fundamental spatial databases and their interoperability
- Geographical analyses that encourage interdisciplinary approaches and regional integration in priority development areas
- Initiatives to promote innovative alternatives for Pan-American studies, and to inspire broader American history perspectives
- Projects aimed at the study and monitoring of geophysical processes

The whole application preparation, evaluation and approval process is by electronic means; therefore applications must be submitted to the relevant National Section (<http://www.ipgh.org/Directorio/Default.htm>) using only the Request for Pan-American Technical Cooperation Projects 2013 Form: http://www.ipgh.org/Cooperacion-Tecnica/Files_CT/Form_Solicitud-Proy_2013.doc. If a given project relates to a training course it must be submitted using the Form found at: http://www.ipgh.org/Cooperacion-Tecnica/Files_CT/Form_Cursos-IPGH_2013.doc. Project Application deadline exclusively received at the General Secretariat is **April 30, 2012**.

For more information please visit: http://www.ipgh.org/Cooperacion-Tecnica/Files_CT/Conv_Proj_2013.doc

For clarification and/or concerns please contact: CooperacionTecnica@ipgh.org

Government Geoplatform to Launch by October, USA

Source: <http://www.nextgov.com/>



An early version of Geoplatform.gov is up now, housed inside a General Services Administration-owned computer cloud that hosts the government data set repository Data.gov. A final version should be available around October, said Johnston, who is a member of the executive steering committee of the Federal Geographic Data Committee and is leading a crossagency team that is developing the initial version of the geospatial platform. Johnston envisions

the site as a "governmentwide one-stop shop for access to .. trusted and nationally consistent geographic data and services." For agencies, the site will offer a full slate of searchable maps built with authoritative government data, including a trove of metadata describing the maps' origin and level of detail. That means GIS professionals in one agency could rely on another agency's maps rather than build their own. Other times they will be able to tweak a map - what Johnston describes as adding a data layer-- without duplicating underlying data. The site also will give private sector and nonprofit Web and mobile developers a single access point for government data sets. "The data will be available instantly over Web services, so people can bring the content into their own GIS systems and build applications with it," Johnston said. "They will be able to do a lot of things with the data instantly."

Global Spatial Data Infrastructure

Latin America and the Caribbean Newsletter

IGN France International is Organising a Regional Seminar in Order to Raise Awareness About NSDI Among African Entities

Source: Aude Areste Lamendour



IGN France International and the French IGN (National Institute of Geographic and Forest Information), in close cooperation with the Geographic Institute of Burkina Faso (IGB), the Economic Commission for Africa and Esri, are organising a regional seminar entitled: "National Spatial Data Infrastructures: which

benefits for African emerging countries?" that will be held on April 3rd in Ouagadougou (Burkina Faso). More information on the program and on this topic on the [IGN France International website](http://www.ignfi.fr) (<http://www.ignfi.fr>). Please do not hesitate to contact Aude Areste Lamendour alamendour@ignfi.fr in case you need more information.

FIG General Assembly 2012, Agenda is Now Available

Source: FIG e-Newsletter March 2012



FIG WORKING WEEK 2012

May 6–10 2012
Rome, Italy

The FIG General Assembly will be held 6 and 10 May in Rome, Italy in conjunction to the FIG Working Week 2012. The main issues on the agenda will be election of two Vice Presidents (2013-2016) and election of Commission Chairs Elect (2013-2014). The General Assembly will also decide on the hosts of Working Week 2015 and 2016.

General Assembly agenda: <http://www.fig.net/admin/ga/2012/agenda.htm> as a .pdf file (21 pages): http://www.fig.net/admin/ga/2012/ga_agenda_2012.pdf as a .pdf file (330 pages, 28.4 MB): http://www.fig.net/admin/ga/2012/ga_agenda_2012_full.pdf

FIG Working Week 2012 under the theme "Knowing to manage the territory, protect the environment, evaluate the cultural heritage" is organised by Consiglio Nazionale Geometri e Geometri Laureati (CNGeGL) and FIG. The main partner is FAO.

Working Week web site www.fig.net/fig2012

Draft programme: http://www.fig.net/fig2012/technical_program.htm

Registration: <https://www.fig.net/registrations/regform.asp?eventid=82>

In connection to the FIG Working Week FIG organizes: The First Young Surveyors Conference 4-5 May. The aim of the Young Surveyors Conference is to create a platform for young surveying professionals to network and discuss issues of common interest (<http://www.fig.net/fig2012/youngsurveyors.htm>).

Global Spatial Data Infrastructure

Latin America and the Caribbean Newsletter

ITC Strategic Partner Geospatial World Forum 2012

Source: Alumni Magazine ITC News



23-27 April, 2012
Amsterdam, The Netherlands



The Geospatial World Forum (23-24 April 2012, Amsterdam, The Netherlands www.geospatialworldforum.org) will bring solution providers, policy makers and users to a single platform, providing opportunities for discussion, debate and interaction. Geospatial World Forum is a confluence of various activities in the form of symposia, seminars, workshops, panel discussions and exchange forums, covering a wide range of topics dealing with technology, application and policy, as well as use cases from the regional and from across the world. With its partners the forum will also host a number of additional events in parallel, such as board meetings, executive meetings, user meetings and partner/reseller meetings. The University of Twente Faculty of Geo-Information Science and Earth Observation in The Netherlands (ITC), is involved in the Forum as strategic institutional partner.

Exploring Digital Earth and Technology

Source: <http://wellington.govt.nz/>

Wellington City Council and Land Information New Zealand have partnered to bring the 4th Digital Earth Summit to Wellington, under the theme "Digital Earth and Technology" being held in Wellington, New Zealand from 2 to 4 September 2012. The Summit will bring the best speakers from overseas and from New Zealand to exchange knowledge and explore technology advancement in this exciting area. The Summit will focus on digital earth science and technology, including advanced earth observation systems, augmented reality and visualisation, high-performance computation and simulation, and spatial data infrastructures. The International Society for Digital Earth is a non-political, non-government, not-for-profit society for the promotion of academic exchange, science and technology innovation, education, and international collaboration on the Digital Earth vision. Digital Earth aims to harness the world's data and information resources to develop a virtual 3-D model of the Earth in order to monitor, measure and forecast natural and human activity on the planet. The inaugural Digital Earth Summit was held in Auckland in 2006. Registrations are now open. For more information and to register, see: <http://www.digitalearth12.org.nz/>

World Conservation Congress – Forum Sessions on Islands

Source: Anete Berzina



Forum sessions

The list of accepted Forum events (7-11 September 2012, Jeju, Korea) that are open for public during the International Union for Conservation of Nature (IUCN) World Conservation Congress is now available online. You can browse for all island-related events on the dedicated Forum portal: <http://portals.iucn.org/2012forum/?q=search/node/island>. More information on the Congress and the Forum can be found at <http://www.iucnworldconservationcongress.org>

ESRI and UNOSAT to Host Conference in April

Source: <http://www.esri.com/>

GIS for the United Nations and the International Community Conference Focuses on Making Critical Information Accessible and Actionable. The Conference will take place on **April 3-5, 2012**, at the World Meteorological Organization headquarters in Geneva, Switzerland. ESRI and United Nations Institute for Training and Research's (UNITAR), Operational Satellite Applications Programme (UNOSAT) organized the conference to demonstrate and discuss the role of GIS in global challenges. Attendees will



Global Spatial Data Infrastructure

Latin America and the Caribbean Newsletter

consider how GIS can provide the analytic knowledge required to make better decisions on issues that are critical for the planet. The aim of the conference is to bring together experts from the United Nations and other international and nongovernmental organizations, government agencies, and the private sector. During breakout sessions, panel discussions, and networking opportunities, they will learn how to best apply geographic information science to devise better responses to regional and global challenges. To learn more, visit gisfortheun.com.

[\(Back to top\)](#)

IGS News, Links, Publications



International
Geospatial Society



The International Geospatial Society (IGS) is the individual membership arm of the GSDI Association and seeks individuals for membership that have geospatial, SDI, GIS or related professional or specialist interests. The Society enhances communications globally among individuals that are actively involved in promoting, developing, or advancing spatial data infrastructure and related concepts. Check out the Benefits of Joining ([English](#)) ([Spanish](#))

[\(Back to top\)](#)

National SDI, News, Links, Presentations

Spatial Data Infrastructure of the Yucatan Peninsula (IDE-PY)

Source: Gerardo Garcia by way of Santiago Borrero



The Spatial Data Infrastructure of the Yucatan Peninsula, Mexico (in Spanish IDE-PY <http://idepy.org/>), aims to build capacity on regional integration, information analysis, management and use in order to guide decision making related to natural resource conservation in the region. Likewise, IDE-PY provides timely and updated scientific, cartographic, statistical and biological information through an accessible interface for the environment and natural resources integrated management. It has established protocols for the efficient multiple-scale information integration, systematization and

exchange. IDE-PY is the basis for creation of the Yucatan Peninsula Regional Biogeography Information Center, which will define indicators for assessing and monitoring the state of ecosystems and their environmental problems. Spatial Data Infrastructure of the Yucatan Peninsula is the end product of the Project: "Strengthening the Use and Strategic Management of Conservation Information," developed with funding from the WWF-Foundation "Carlos Slim" and implemented by Pronatura Peninsula de Yucatan A. C. Currently, the IDE-PY portal is organized into six sections: Cartographic Compendium, Metadata, Viewer, Statistics, Projects, and Documentation.

[\(Back to top\)](#)

Global Spatial Data Infrastructure

Latin America and the Caribbean Newsletter

Articles and Publications of the Month

Short O'Reilly book on open government data

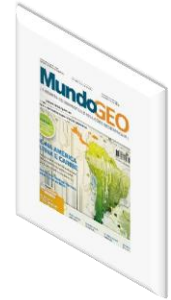
Source: Douglas D. Nebert

You might be interested to read this short (15-page) O'Reilly book that came out last month called "Data for the Public Good: Data Holds Immense Potential to Help Citizens and Government" by Alex Howard. You can download a PDF of it for free by creating an account on O'Reilly: <http://shop.oreilly.com/product/0636920025580.do>

MundoGEO Digital Magazine now Available in Spanish

Source: Viviane Prestes

MundoGEO (<http://mundogeo.com>) announces launching of the new MundoGEO Magazine in Spanish. In this issue, the cover story is about Spatial Data Infrastructure in Latin America and the Caribbean, which is available for "browsing" and downloads in pdf format at: <http://mundogeo.com/mundogeo espanol11.php>.



FAO Paper Examines MPA Governance in Brazil, Palau, India and Senegal

Source: IISD Reporting Services

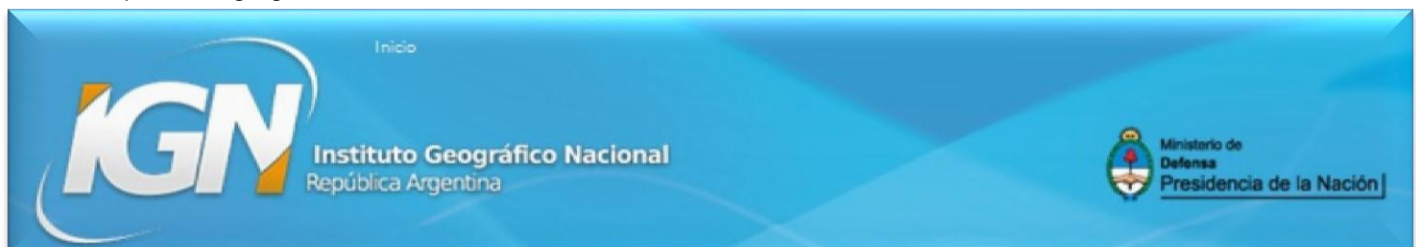
The Food and Agriculture Organization of the UN (FAO) has released a technical paper featuring case studies from Brazil, India, Palau and Senegal. The paper is intended to ground the FAO Technical Guidelines on Marine Protected Areas (MPAs) and Fisheries in practical experience and to inform the use of MPAs globally. The technical paper, titled "Marine protected areas: country case studies on policy, governance and institutional issues," examines governance opportunities and constraints in the use of spatial management tools at the national level. The case studies note different uses for MPAs, including sustainable management of fisheries or strict environmental protection. They note broad decision-making processes and governance regimes for the design and management of MPAs. The case study on Brazil focuses on the dual role of MPAs, namely for fisheries and for conservation. It highlights the differences and objectives of the two categories in Brazil and provides a brief history of their implementation. It also includes a discussion on the lessons learned from a few examples of MPAs, and the main challenges, impacts and opportunities in Brazil for their effective implementation. This set of case studies is the first in a series of case studies on MPA governance undertaken by the FAO. The case studies were funded by the Government of Japan [FAO Publication: [Marine Protected Areas: Country Case Studies on Policy, Governance and Institutional Issues](#)].

[\(Back to top\)](#)

Geospatial Research, Applications, Software, Data

[Aconcagua 2012: New Mission to the Giant Mountains, Argentina](#)

Source: <http://www.ign.gob.ar/>



The National Geographic Institute has launched its second measurement campaign at Cerro (Mount) Aconcagua. This work is framed in the draft measurement of characteristic and endpoints of Argentina. In this particular case the project is conducted in cooperation with the SIGMA Project (GPS Research System Mauna Aconcagua), comprised by National University of Cuyo IDEARN (Institute for Interdisciplinary Studies of Environment and Natural Resources), IANIGLA (Argentine Institute of Snow Research and Glaciology) of CONICET (National Council for Scientific and Technical Research). Determination of the accurate Aconcagua height with updated technological equipment and

Global Spatial Data Infrastructure Latin America and the Caribbean Newsletter

installation of a permanent GPS station near the Condors Nest refuge (NICO), are main tasks to be performed at 5,400 meters above sea level. Installation of the permanent station will contribute to the monitoring of crustal movements, both in terms of plate tectonics and of possible earthquakes. Likewise, GPS monitoring will take place at the mount's peak annually in conjunction with NICO station.

[ONE held 23rd Inter-institutional Meeting on the National Statistical System, Dominican Republic](#)

Source: <http://www.one.gob.do/>



The National Statistical Office (in Spanish ONE) held the 23rd Meeting on the National Statistical System, which focus was the analysis of census data as a basis for public policy, development planning and decision making. In his opening address the Director of the ONE, Pablo Tactuk noted that census data are the only disaggregated information for each territory, which are free access-first order inputs to projects, research papers, theses, economic and social studies, among other applications. "These are used by public institutions, local governments, international organizations, NGOs, private companies, academics and researchers." He added that "the official presentation of most relevant and significant statistical operation results, is scheduled for next May, with a wide distribution throughout the country." Pablo Tactuk explained that "this meeting was conducted within the framework of these provisions and their main motivation is the country's need of deepening into these different information, and its immense potential."

[CIPAF Plan for Women Working in ICT, Dominican Republic](#)

Source: <http://osicrd.one.gob.do/>



The Research Centre for Feminist Action (in Spanish CIPAF) brought feminist organizations and other entities of West Santo Domingo for consultation on developing a Plan for Equal Opportunities to Women in the Information Society. Magaly Pineda, director of CIPAF, said the initiative seeks to reduce the digital divide focusing on women and that it has been advanced since 2004, in order to achieve national level strategies and plans on the Information Society inside the Gender and ICT project. Pineda explained that during the meeting were discussed the obstacles that Dominican women face preventing them to maximize benefits of new Information and Communication Technologies (ICT), and demanded the Dominican Government to ensure inclusion and implementation of policies, programs, and projects specifically aimed at overcoming the current existing gender digital divide.

[First Study to Measure Value of Marine Spatial Planning](#)

Source: <http://www.terraily.com/>

A study published in the Proceedings of the National Academy of Sciences (PNAS) shows for the first time that incorporating multiple stakeholder interests in a comprehensive approach to ocean planning (Marine Spatial Planning or MSP), actually reduces conflict and enhances cultural, conservation, and economic benefits. Researchers at the Bren School of Environmental Science and Management (Bren) and the National Center for Ecological Analysis and Synthesis (NCEAS) at the University of California Santa Barbara developed MSP-minded wind farm designs and compared them to "business as usual" designs under traditional energy permitting. "This new study provides clear evidence for the value of doing MSP," says lead author Crow White, a postdoctoral researcher at Bren. Importantly, the study shows that the value of MSP increases with the size of the planning area. By using MSP, policymakers and managers could choose and implement a specific design that reflects society's relative preferences for particular ocean activities. While they are often left out of economic analyses, tradeoff analysis can include those ocean uses that can only be measured in non-monetary currencies such as biodiversity conservation, recreational person-days and cultural

Global Spatial Data Infrastructure

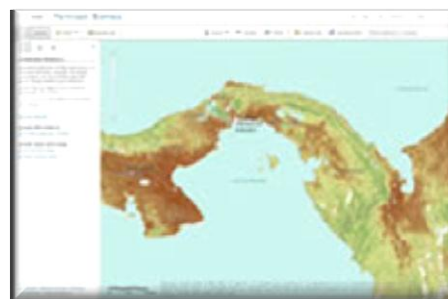
Latin America and the Caribbean Newsletter

value. Visualization of these tradeoffs can provide greater transparency for negotiations among existing and emerging ocean uses whose diverse stakeholders may not have previously considered their effects on other sectors. Though these results illustrate the possibilities of MSP, its findings are not prescriptive - this study simply suggests possibilities.

[Tropic Forest Dataset Available on ArcGIS Online](#)

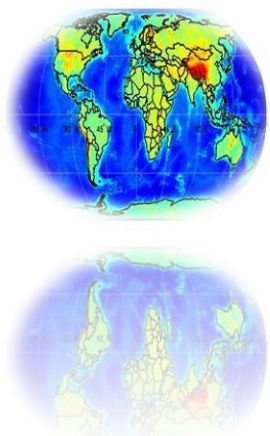
Source: <http://www.esri.com/>

Woods Hole Research Center (WHRC) is using ESRI's [ArcGIS Online](#) to make its new carbon stock datasets available to scientists and environmental experts throughout the world. Decision makers will be able to easily access this data and use GIS to study tropical forest carbon-density and change, which impacts the atmosphere and affects climate change. The WHRC database is more accurate than previous data collections because of developments in satellite sensors designed specifically for vegetation measurements derived from LiDAR data and MoDIS data from NASA (National Aeronautics and Space Administration). The output layer is "metric tons of biomass," which is basically the amount of matter sitting in each pixel. Included in the carbon-density model are the actual measurements of trees sampled at thousands of locations throughout the tropics. Workers from these field campaigns used established protocols that were designed to standardize data collection. Data consumers can access the Pantropic Biomass dataset at esri.com/tropcarbon.



[Mapping the Moho with GOCE](#)

Source: <http://www.terraily.com/>



This map shows the global Mohorovicic discontinuity -known as Moho- based on data from the GOCE satellite. Moho is the boundary between the crust and the mantle, ranging from about 70 km in depth in mountainous areas, like the Himalayas, to 10 km beneath the ocean floor. The first global high-resolution map of the boundary between Earth's crust and mantle -the Moho- has been produced based on data from ESA's (European Spatial Agency) GOCE gravity satellite. Understanding the Moho will offer new clues into the dynamics of Earth's interior. Earth's crust is the outermost solid shell of our planet. Even though it makes up less than 1% of the volume of the planet, the crust is exceptionally important not just because we live on it, but because is the place where all our geological resources like natural gas, oil and minerals come from. GOCE measures the gravity field and models the geoid with unprecedented accuracy to advance our knowledge of ocean circulation, which plays a crucial role in energy exchanges around the globe, sea-level change and Earth interior processes. This initiative supports young scientists at post-doctoral level in ESA Member States to advance our knowledge in Earth system science by exploiting the observational capacity of ESA missions.

[RePosit](#)

Source: <http://caribbean-gis.blogspot.com/>

A fantastic [List of Data Repositories](#) by [Karen Payne](#), from the Carl Vinson Institute of Government in Athens, GA, USA, is now online -and anyone may contribute their knowledge directly to it as well. It's designed largely for work in the humanitarian response sector, so please consider adding data sources about your country.

[OSGeo-Live 5.5](#)

Source: <http://live.osgeo.org/>

OSGeo-Live is a self-contained bootable DVD, USB thumb drive or Virtual Machine based on Xubuntu, that allows you to try a wide variety of open source geospatial software without installing anything. It is composed entirely of free software, allowing it to be freely distributed, duplicated and passed around. It provides pre-configured applications for a range of



Global Spatial Data Infrastructure Latin America and the Caribbean Newsletter

geospatial use cases, including storage, publishing, viewing, analysis and manipulation of data. It also contains sample datasets and documentation. A half hour presentation, highlighting all OSGeo-Live applications, is available as a video, along with source slides and script. Details at: <http://live.osgeo.org/en/presentation.html>

uDig

Source: <http://www.directionsmag.com/>

Ken Yanow, professor of geographical sciences at Southwestern College in Chula Vista, CA, is contributing a [series of articles](#) ([introduction](#)) reviewing open source desktop GIS packages for use in education and business. This article explores the strengths of uDig, the "user-friendly desktop Internet GIS." uDig hits a rather powerful punch, including support for local data, databases and Internet data. From the start (way back in 2004), it was designed as a general purpose development platform. And it continues that tradition today. uDig is a nice spatial data viewer and editor, with special emphasis on the OpenGIS standards for Internet GIS, the Web Map Server (WMS) Service and Web Feature Server (WFS) Service standards. It provides a common Java platform for building spatial applications with open source components. Perhaps one of the more appealing features of uDig is its user friendly interface (I would describe it as a beefed up Google Earth interface). In addition, uDig is easily installed and comes with a set of "walkthrough" tutorials, which help to make the user experience quite pleasant. uDig has a large community of users and followers, with easily accessible "tips" and online help readily available on the uDig "users" [web page](#) -- another big plus.

[\(Back to top\)](#)

Training and Funding Opportunities, Awards

Call for Scholarship: "Master in Geo Information Science and Earth Observation"

Source: <http://snitchile.blogspot.com/>



Faculty of Geo-Information Science and Earth Observation

The Center for Aerospace Survey and GIS Applications for Natural Resource Sustainable Development (in Spanish CLAS) of the Universidad Mayor de San Simon (Bolivia) announces the new version of the "Master in Geo Information Science and Earth Observation". Requirements: It

invites professionals related to environmental science with academic degree and two years of work experience (minimum).

Procedures: Fill the online application form of ITC for the mention of preference at the following address: <http://www.itc.nl/CourseFinder>; choose Location: Bolivia and apply to one of two entries. Request manual filling of the application to: dalence@clas.umss.edu.bo; stephandalence@gmail.com; secretariaclas@gmail.com; clavel@clas.umss.edu.bo (ask for all emails), or download from www.clas.umss.edu.bo or www.clas.postgradoumss.net. If your application is eligible for the ITC, the entity shall provide a letter in digital form via email. Application deadline **April 24, 2012**

Scholarships for Master on Early Warning and Emergency Response Space Applications, Argentina

Source: <http://www.conae.gov.ar/>



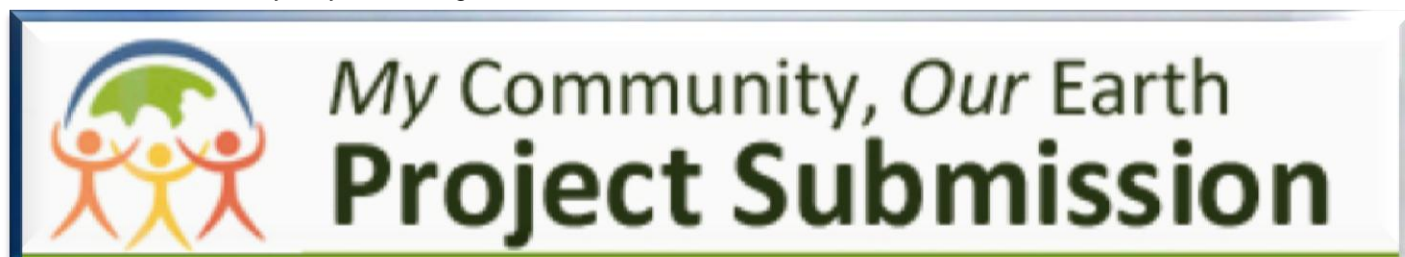
The Faculty of Mathematics, Physics and Astronomy of the Institute of Space Studies "Mario Gulich", announces nominations for the Master in Science scholarships on Early Warning and Emergency Response Space Applications.

Global Spatial Data Infrastructure Latin America and the Caribbean Newsletter

This Institute is essential for the development of the National Space Planning of Argentina, implemented by the National Commission on Space Activities (in Spanish CONAE). The Master lasts two years and includes research and development, and presentation of a thesis. It is an intensive program that requires exclusive dedication; thus, CONAE provides successful applicants with a grant during the entire period. This Master program is directed to graduate students of the region's countries, particularly those that have Space cooperation agreements with Argentina, which explicitly have cooperation with the Gulich Institute. These countries include: Chile, Colombia, Ecuador and Peru. Application Deadline is **May 4, 2012**. Detailed information of this call may be found at <http://www.conae.gov.ar/prensa/IG.pdf> For questions or additional information please visit this website: www.conae.gov.ar or send an email to ig@conae.gov.ar

Call for Youth-Led Projects using Mapping, Geography, and GIS for Sustainable Development

Source: Patricia Solis by way of Santiago Borrero



Association of American Geographers, ESRI, National Geographic Society, United Nations Environment Programme, United States Department of Agriculture, US Agency for International Development, US Department of State and other partners invite you to: Our Community, Our Earth Geographic Learning for Sustainable Development (MyCOE). Submit your youth-led sustainable development project and map in celebration of the UN Rio+20 Conference. Please find helpful resources, tools, and a step-by-step guide to using geography and geographic tools to promote more sustainable communities around the world. Get started at www.mycoe.org. Submit your project and map online according to competition guidelines at www.aag.org/mycoesubmit. All submissions will be reviewed and displayed, and later posted online for public viewing. The most popular projects and others selected by our international committee of experts will be showcased during the Rio+20 United Nations Conference for Sustainable Development in June 2012 and will receive special recognition and prizes. For more information on the prizes please log on to: www.aag.org/mycoeprizes. MyCOE is a U.S. Type II Public-Private Partnership established in 2001 in conjunction with the United Nations World Summit for Sustainable Development in Johannesburg. It is one of the longest continually operating, sustained partnerships of this kind, and provides geographic perspectives, learning resources, and technological tools to encourage youth from middle school to postgraduate students in more than 100 countries to engage with their local communities around global sustainability themes. AAG serves as MyCOE Secretariat.

Open Call for 2013 Australian Development Scholarship for Latin American

Source: Carlos Pretelt by way of Susana Barrera

The Australian Government opened call for Postgraduate scholarships (Master and Doctorate), will offer 80 scholarships for Latin American countries, to begin studies in 2013. The online application closes on **April 30, 2012**. Priority topics of study include: Governance, Water, Natural Resource Management, Mining industry, Rural world. The scholarships are aimed at professionals who meet the requirements established in the website and listed in the information brochures, and also need to have relevant work experience in one of the program's priorities. For complete information please visit the ADS Scholarship: www.becasadslatam.org. Applicants must meet all eligibility requirements listed in the "Scholarships Handbook". In addition, applicants from Latin America must meet special conditions listed in: "Country Profile".

A banner for Australia Awards Development Scholarships. The top left features the Australian Government coat of arms and the text 'Australian Government'. The top right features the 'Australia Awards' logo with a star and the text 'DEVELOPMENT SCHOLARSHIPS'. Below this is a navigation bar with links: Inicio | Programa de Becas | Países Participantes | Temas Prioritarios | Beneficios y Requisitos | Postulación y Selección | Links y Preguntas | Contacto. The main image shows a young woman looking up at a large, modern building (the Sydney Opera House) by the water. At the bottom, the text reads: 'AUSTRALIAN DEVELOPMENT SCHOLARSHIPS FOR LATIN AMERICA', 'Becas Australianas para el Desarrollo de Latinoamérica', and 'Australia Awards - Becas del Gobierno de Australia'.

Global Spatial Data Infrastructure

Latin America and the Caribbean Newsletter

But in summary these conditions include: to have verifiable work experience in one of the priority issues listed in this document, Demonstrate knowledge of the English language through the Academic IELTS test (International English Language Testing System) with a minimum score of 6.0 overall and with a score of not less than 5.5 on the individual tests: Writing, Listening, Speaking and Reading; or the equivalent of the TOEFL (Test of English as a Foreign Language).

Caribbean - Open Call for Proposals in the Framework of the Preparatory Action "Best"

Source: EU Overseas Forum; <http://ec.europa.eu/>



In the framework of the Preparatory Action1, "Best", voluntary scheme for Biodiversity and Ecosystem Services in Territories of the EU Outermost Regions and Overseas Countries and Territories, the Commission invites public and private bodies in the EU (European Union) Outermost Regions and Overseas Countries and Territories, site managers, research institutions, nongovernmental organizations and international organizations to submit proposals for projects. The actions shall contribute to the protection of natural and semi-natural habitats which are characteristic for the EU Outermost Regions and Overseas Countries and Territories and promote the sustainable use of biodiversity and ecosystem services through practical examples including examples for ecosystem-based approaches to climate change adaptation and mitigation and green infrastructure providing multiple benefits. In addition the

actions shall reinforce existing and encourage new partnerships. A more detailed description of the objectives is set out in the Guide for grant applicants. The budget available for this call is EUR 2,000,000. The Programme is a co-financing instrument. The maximum co-financing is 95% of the eligible costs. Applicants and their partners must be public or private bodies, actors and institutions. Applicants must be registered in an EU Member State or in an EU Overseas Country and Territory or be an International organization. Partners from third Countries are also eligible. The Guide for grant applicants can be downloaded from the Commission web site at the following address: http://ec.europa.eu/environment/funding/grants_en.htm; More information at: http://ec.europa.eu/environment/funding/finansup_12_best.htm

Short courses on protected area management

Source: Jim Barborak

Dear L-List Colleagues: Here are the links to information on the three longest-running short courses on protected area management given each year for Spanish and Portuguese speakers from Latin America: The Colorado State University short course given in Spanish in the USA; CATIE's similar course in Costa Rica; and the DUMAC/RESERVA program in Mexico. These are excellent opportunities for training for protected area managers, conservation agency personnel and those involved in community conservation initiatives. The CSU and CATIE courses are one month long and the RESERVA course is two months long.

- [22nd Colorado State course in Protected Area Management, USA](#)
- [CATIE International course in Costa Rica on Protected Areas and Biological Corridors: Tools for Adaptation and Mitigation to Climate Change:](#)
- [DUMAC-RESERVA course in Mexico](#)



Graduate Scholars Program

Source: Marina Islas



Global Spatial Data Infrastructure

Latin America and the Caribbean Newsletter

The National Socio-Environmental Synthesis Center (SESYNC) seeks applicants for its Graduate Scholars Program. The SESYNC Graduate Scholars Program will harness the creative abilities of 10 graduate students from both the social and natural sciences, to identify socio-environmental topics that are ripe for synthesis. Graduate Scholars will develop several potential “Themes” for SESYNC, and manage individual social networks for further Theme development. SESYNC Themes are cross-disciplinary, exciting, new research questions that carry importance at an international scale, hold potential for policy/decision impacts, and are useful to audiences beyond the research community. We are looking for an elite group of emergent scholars who are “big thinkers” in their fields to drive socio-environmental synthesis efforts. This year-long program includes two in-person workshops in Annapolis, Maryland and one on-going social networking activity. SESYNC will cover travel, accommodation and food expenses for the two in-person workshops. Applications will be accepted in pdf digital format only (except for references). Email complete application materials with a subject line “Sesync Grad Scholars Application” to: grad-scholars.application@sesync.org Deadline: Thursday, **April 12, 2012**. More information may be found at: <http://www.sesync.org/graduate-scholars-program>. Please contact Rachel Berndtson at rberndtson@sesync.org with any questions.

ArcGIS Online Now Available in Nine Additional Languages

Source: <http://www.esri.com/>

To better serve the global community, ESRI has localized ArcGIS Online in nine additional languages. The translation of the ArcGIS Online website into languages other than English makes it easier for users around the world to create maps, share their organizations' content, and collaborate with other users in their local language. In addition to English, users can interact with ArcGIS Online in Arabic, French, German, Italian, Japanese, Portuguese, Russian, Simplified Chinese, and Spanish. These languages will automatically be presented when users access ArcGIS Online through the web-based interface at www.arcgis.com. Once users have signed in to ArcGIS Online, they can choose to change their language and region preference through their user profiles. ESRI's international distributors have selected numerous featured maps and apps for their region and will continue to curate locale-specific content to keep it up-to-date and meaningful to regional users. The ArcGIS Online help system will soon be available in 10 languages (including the default, English). To experience ArcGIS Online in the language of your choice, visit www.arcgis.com.



[\(Back to top\)](#)

Employment Opportunities

[OGC Director of Services – Americas](#)

Source: <http://www.opengeospatial.org/> by way of Eduardo Freitas

The Open Geospatial Consortium (OGC) seeks to hire a Director of Services - Americas. This full time position is responsible for working with OGC's membership based in the Americas to explain / familiarize members with benefits and services that come with OGC membership, and to act as the focal point for OGC related activities planned and convened in the region. This position is responsible for member inquiries and suggestions for improved OGC services / support in the region. Furthermore this position is responsible for membership recruitment as well as being the primary contact point for non OGC member inquiries from the Americas. Detailed information [here](#).

Programme Officer, Marine Assessment and Decision Support Programme

Source: Louisa Wood

12 month Fixed-Term Contract, possibility of extension; Salary Band £20,916 - £38,441. The United Nations Environment Programme World Conservation Monitoring Centre (UNEP-WCMC) aims to put the best available biodiversity information in front of national, regional and global decision makers. The Centre





Global Spatial Data Infrastructure

Latin America and the Caribbean Newsletter

is the result of a collaborative agreement between UNEP and WCMC, a UK Charity. The role: An exciting opportunity has arisen to join our Marine Assessment and Decision Support Programme at a pivotal moment in their development. As Programme Officer, you will support and lead technical projects in marine assessment, data provision and decision support. This is a fixed-term role initially, however there is a possibility of this becoming a permanent role in the future. Key responsibilities: The post holder will be responsible for the delivery of a broad range of projects related to marine environmental monitoring and assessment, spanning issues including habitat mapping, marine protected areas, marine spatial planning, ecosystem service assessment and assessment and reporting at both regional and global levels. The candidate: The successful candidate will hold a degree in marine science or a related field, with demonstrated applied knowledge of spatial planning techniques. They will be a motivated and enthusiastic individual with a solid conceptual base in marine science, a proven track record in project development, project management, research, data analysis and engagement with the international conservation policy context. Experience working in at least one other UN language (besides English) is highly desirable. Applicants will also have an understanding of the essential characteristics of successful partnership-building and will be able to demonstrate the ability to work collaboratively. WCMC is a UK charity that supports the United Nations Environment Programme. Its mission is to evaluate and highlight the many values of biodiversity and put authoritative biodiversity knowledge at the centre of decision-making. Since its establishment in the 1970s, the Centre has been at the forefront of the compilation, management, analysis and dissemination of global biodiversity information, and has an outstanding record of achievement. For more information, please visit www.unep-wcmc.org. To apply, please complete the application form and submit this and a covering letter with details of current or last salary to recruitment@unep-wcmc.org by the closing date of **20th April 2012**. Candidates should note this is not a UN post and that only those eligible to work in the UK should apply.

[WIS Data Management Applications \(DMA\)](#)

Source: http://www.wmo.int/pages/vacancies/index_en.html
[Vacancy Notice No. 1816](#) - Scientific Officer, P.4, World Meteorological Organization Information System (WIS) Data Management Applications (DMA) Division, Observing and Information System (OBS) Department. Closing date: **16 April 2012**

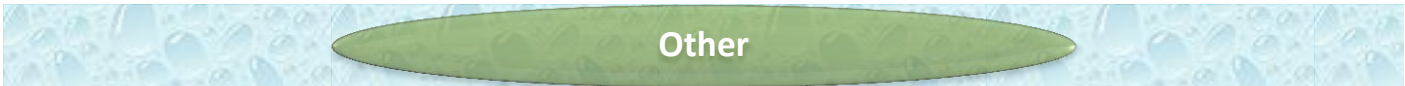


WMO Information System (WIS)

Job Announcement: The Urban Environment

Source: Ralph H Saunders by way of Kenneth Young
The Earth and Environment Program at California State University Dominguez Hills will soon begin reviewing applications for a new tenured or tenure-track position in urban environmental planning. The Earth and Environment Program is a new, interdisciplinary major program at CSUDH. For more information, please see visit our departmental webpage at <http://www.nbs.csudh.edu/earth/>

[\(Back to top\)](#)



Other

Progress on the Installation of the Antenna for Deep Space Exploration, Argentina

Source: <http://www.conae.gov.ar/>
Now is under construction in Malargue, Mendoza, the European Space Agency (ESA) station for the monitoring of deep space exploration satellite missions. After this site being selected in 2009, between 20 possible places in America and this country, ESA and the government of Argentina signed the same year an agreement for the establishment of a station consisting of a 35-meter in diameter antenna called Deep Space 3 (DS3) and associated operation facilities, to support ESA interplanetary missions. Scientific communities in Argentina have access to 10% of the time of use of this antenna.

Institutions Connected to CLARA

Source: <http://www.renata.edu.co/> ; <http://www.redclara.net/>
See all universities and research centers, which through their connection to academic networks in their countries, are now connected to the Advanced Internet-based RedCLARA. This information will not only provide clarity in terms of who comprise the only advanced academic network in the region, but much more than



Global Spatial Data Infrastructure

Latin America and the Caribbean Newsletter

that, you will discover with whom you may conduct research and development projects that require the huge data transportation capacity of RedCLARA. To access this information please click on the map at: http://www.redclara.net/index.php?option=com_phocamaps&view=map&id=1&Itemid=499&lang=es

St. Elizabeth Website to Promote Tourism

Source: <http://www.jis.gov.jm/>



The St. Elizabeth Homecoming Foundation has launched a website (www.visitstelizabeth.com.jm), to promote tourism in the parish, and expose other developmental activities to targeted audiences. The website is being financed from a grant of \$4.9 million provided by the Jamaica Social Investment Fund (JSIF), and a \$2.58 million contribution from the community. It was launched on January. Speaking at the launch at the Everglades Conference Centre, Parrotte, Chairman of the Foundation, Donna Parchment Brown, said that the site will focus on developmental issues. She said it is an initiative to market St. Elizabeth as an emerging tourist destination, and part of the thrust to develop community-based tourism, as well as a voice for the

Parish Development Committee (PDC). The website was developed by the Jamaica Information Service (JIS). Director of Corporate Services at the JIS, Errol Gardner, commended the Foundation, saying it has "evolved into an institution." He said that the objective is to use images to showcase assets and bring out the unique features and icons of St. Elizabeth. The website was funded under the JSIF Rural Economic Development Initiative (REDI), which seeks to boost the capacity of rural communities to promote and market local enterprise and community-based tourism, as part of the agency's poverty reduction strategy.

[\(Back to top\)](#)

Americas: Conferences, SDI Events

[North America Conference FOSS4G- OSGeo](#)

Source: <http://foss4g-na.org/>

★ FOSS4G North America 2012

FOSS4G North America will be held from April 10 to 12, 2012 in Washington DC, EUA. This year's North American event brings together developers, users, and executives who are building, deploying, and evaluating open source for innovative applications across government and industry. FOSS4G conferences highlight the latest and greatest projects from the Open Source Geospatial foundation [OSGeo](#). This year's program targets a range of interests with the following tracks: Technology & Tips Track; Deployment & Decisions Track; and Ideas & Trends Track. Please find detailed information at the Conference website: <http://foss4g-na.org/>

[Latin American Forum on Sustainable Development](#)

Source: <http://www.fororosariosostenible.org/>



The Forum is a space in which social actors with different profiles and stories, share their experiences and propose ways of working together for a sustainable planet. The Forum will be held on and April 22-24,

2012 in Rosario, Argentina, and converge on the city officials, members of civil society organizations, businessmen, and sustainable entrepreneurs and people mobilized by the subjects that will arise and be taken as input to the Rio+20 Summit. For the Forum's general topics and to expand relevant information please log on to its [website](#).

[First International and Second National Seminar on Geomatics, the Environment, and Hydraulics](#)

Source: <http://www.uptc.edu.co/>



The Pedagogical and Technological University of Colombia, Schools of Civil and Environmental Engineering are pleased to invite you to participate in the First International Seminar and Second National Seminar on Geomatics, the Environment, and Hydraulics, which will be held on April 26-27, 2012 in the city of Tunja, Colombia. The seminar aims to bring together a group of international, national and local professionals to present and discuss current issues on sustainable management of water resources, environmental management and geomatics. Contact: seminario.giga2012@gmail.com. Please find detailed information [here](#).

[\(Back to top\)](#)

Global Spatial Data Infrastructure

Latin America and the Caribbean Newsletter

YEAR 2012

[Year 2012](#) January February March [April](#) [May](#) [June](#) [July](#) [August](#) [September](#) [October](#) [November](#) [December](#)
[Year 2013](#) January [February](#) March [April](#) May June July August September October November December

APRIL 2012

2-4	San Francisco CA, USA	Where 2.0
2-4	San Francisco CA, USA	O'Reilly Where: The Art and Business of Location
2-5	Dallas TX, USA	Computerworld – SNW Spring 2012
10-12	Washington DC, USA	WhereCon 2012
10-12	Washington DC, USA	North America Conference FOSS4G- OSGeo
NEW 10-14	Havana, Cuba	33rd Pan American Convention of Engineers UPADI 2012
NEW 11-13	Buenos Aires, Argentina	7th Aquarius SAC-D Science Meeting
11-13	Sacramento CA, USA	CalGIS: 18th Annual California GIS Conference
14-17	Parana, Entre Rios, Argentina	6th Colloquium on Latin American Geography
14-17	Los Angeles CA, USA	2012 American Planning Association National Planning Conference
15-18	Loveland CO, USA	25th Annual GIS-T 2012 Mainframe to Mainstream - 25 Years of Progress
15-18	Houston TX, USA	SPAR International 2012: Conference on End-to-End 3D: Capture, Process, Deliver
NEW 16-18	Loveland CO, USA	GIS-T 2012: GIS for Transportation Mainframe to Mainstream - 25 Years of Progress
16-19	Las Vegas NV, USA	Optimizing Customer and Product Support Through Remote and Proactive Service Models
16-20	Mar del Plata, Argentina	XIX Latin American Congress and XXIII Argentine Congress on Soil Science
16-20	Havana, Cuba	Congress INFO 2012 - 12th International Congress on Information
17-18	Atlantic City NJ, USA	MapFrame East Coast Regional Seminar
19-20	Ottawa ON, Canada	MAPublisher Training
19-21	Bahia Blanca, Argentina	IX National Conference on Physical Geography Contact: geografiafisica@uns.edu.ar
21-24	Ciudad Juárez, Mexico	CIPEU2012
22-24	Rosario, Argentina	Latin American Forum on Sustainable Development
NEW 22-25	Vancouver, Canada	9th International Conference on Information Systems for Crisis Response and Management- ISCRAM 2012
22-26	Kansas City MO, USA	MAGIC - 2012: Mid-America GIS Symposium
23-25	Washington D.C., USA	Annual World Bank Conference on Land and Poverty, Organised by the World Bank
NEW 24-25	Las Vegas NV, USA	MapFrame West Coast Regional Seminar
24-25	Albany NY, USA	8th Annual GIS Day and Workshop 2012
NEW 25-28	Cordoba, Argentina	XI National and VIII Latin American Congress on Surveying Contact: seceventos@agrimcba.org.ar
26-27	San Miguel de Tucumán, Argentina	3rd Tucuman GIS Working Days
26-27	Tunja, Boyacá, Colombia	First International and 2nd National Seminar on Geomatics, Environment and Hydraulics
Apr. 30 – May 2	Houston TX, USA	ESRI Petroleum GIS Conference

MAY 2012

2-5	Villa Carlos Paz, Córdoba, Argentina	11th National and 8th Latin American Congress on Surveying
7-9	Rio de Janeiro RJ, Brazil	GEOBIA 2012: Geographic Object-Based Image Analysis Contact: geobia2012@dpi.inpe.br
7-9	Calgary Alberta, Canada	Conference GeoAlberta 2012
7-11	Bogotá, Colombia	XII International Symposium on Geo critique
8-9	Bloomington IN, USA	2012 Indiana GIS Conference
8-10	New Orleans LA, USA	CTIA Wireless 2012

Global Spatial Data Infrastructure

Latin America and the Caribbean Newsletter

9 *NEW*	Ontario, Canada	Be Spatial 2012
14-17	Rio Claro-SP, Brazil	Brazilian Congress About Natural Disasters
14-17	Quebec City, Canada	GSDI-13: Spatially Enabling Government, Industry and Citizens
14-18	Havana, Cuba	V Latin American Congress on Territorial Studies (in Spanish CIETA)
15-17	Ontario, Canada	Canadian Hydrographic Conference (CHC2012)
15-17 *NEW*	Philadelphia PA, USA	Bentley System's Be Together User Conference
17-18	Denver CO, USA	MAPublisher Training
22-23	Grantville PA, USA	The 2012 PA GIS Conference
22-23	Washington DC, USA	Location Intelligence Conference/Oracle Spatial 2012
22-25	Ciudad de Mexico, Mexico	First International Conference on Government Statistics, Public Security, Justice and Victimization
26-27	Tunja, Colombia	I International and II National Seminar on Geomatics, Environmental and Hydraulics
May 28-Jun. 1	Mendoza, Argentina	XI Argentine Congress on Meteorology Contact: blazquez@cima.fcen.uba.ar
29-31	São Paulo, Brazil	MundoGEO#Connect: "Sharing Information for a Better World" Contact: connect@mundogeo.com
May 30-Jun. 1	Washington DC, USA	UCGIS 2012 Spring Symposium Building GIScience 2.0

JUNE 2012

3-6	Salvador Bahía, Brazil	33rd Inter-American Congress on Sanitary and Environmental Engineering AIDIS
4-5	Bogotá, Colombia	Andean Geomatics 2012
4-6	Rio de Janeiro RJ, Brazil	UN Conference on Sustainable Development (commonly called Earth Summit 2012) or 'Rio+20'
4-7	Las Vegas NV, USA	Hexagon 2012
6-8	Villa de Leyva, Colombia	6th Symposium of the Latin American and Caribbean Society of Environmental History - SOLCHA
7-8 *NEW*	Buenos Aires, Argentina	First Workshop on Capture, Processing, Analysis and Dissemination of Geospatial Information
11-15	Savannah GA, USA	URISA Leadership Academy
12-13	Buenos Aires, Argentina	First Latin-American Congress on Urban Ecology - Challenges and Development Scenarios for Latin American Cities
12-14	Boulder CO, USA	Call for Participation - Socioeconomic Benefits of Geospatial Information Contact: francoise.pearlman@ieee.org
13-15 *NEW*	New Orleans LA, USA	Insights 2012 User Conference
14-15	Buenos Aires, Argentina	First International Course on Urban Ecology
14-15	Chicago IL, USA	Location Intelligence for Enterprise USA
18-20	Salvador de Bahía, Brazil	Seventh International Conference on "Geographical Analysis, Urban Modeling, Spatial Statistics" GEOG-AN-MOD 12
18-21	Salvador de Bahía, Brazil	The 2012 International Conference on Computational Science and its Applications (ICCSA 2012)
24-27	Chicago IL, USA	4th Urban Street Symposium
25-28 *NEW*	Vancouver BC, Canada	CARIS 2012 Conference
25-29	Buenos Aires, Argentina	Sixth Congress on Cartographic Science

JULY 2012

1-3	Reston, VA, USA	COM.Geo 2012 The 3rd International Conference on Computing for Geospatial Research and Application
2-3 *NEW*	Lima, Peru	TICAL 2012
7-12	San Diego CA, USA	The Survey Summit
16-20	New Orleans LA, USA	2012 Coordinate Metrology Systems Conference (CMS)
19-24 *NEW*	San Diego CA, USA	Cadastral Summit - Annual ACSM Conference
21-24	San Diego CA, USA	ESRI Education User Conference
21-24	San Diego CA, USA	ESRI Homeland Security Summit
22-24	San Diego CA, USA	ESRI Business Summit
23-27	San Diego CA, USA	ESRI International User Conference 2012

Global Spatial Data Infrastructure

Latin America and the Caribbean Newsletter

25-28 *NEW*	Porto Alegre, Brasil	XIII International Free Software Forum (FISL)
26-27	San Diego CA, USA	MAPublisher Training

AUGUST 2012

6-9	Memphis TN, USA	URISA/NENA Addressing Conference . For more information, visits www.nena.org .
13-15	UN NY, USA	Second Session of the Committee of Experts on Global Geospatial Information Management
14-17	Rio de Janeiro, Brazil	Latin America Geospatial Forum 2012
14-17	Rio de Janeiro, Brazil	Latin America Geospatial Forum 2 nd Annual Latin American Conference and Exhibition on Geospatial Information, Technology and Applications.
16-17	Rio de Janeiro, Brazil	Conference on Geospatial for Defense and Homeland Security: Geo-Intelligence Latin America
23-24	Porto Alegre, Brazil	Seminar "Sharing Environmental Data in Latin America"

SEPTEMBER 2012

5-8	Pittsburgh, PA, USA	14th ACM International Conference on Ubiquitous Computing - UbiComp 2012
9-11	Albuquerque NM, USA	IMTA (Americas) 2012 Conference and Member Showcase
9-13	Lake Buena Vista FL, USA	National States Geographic Information Council Annual Meeting
11-14	Corvallis OR, USA	ForestSAT 2012: A Conference Promoting Science-based Applications of Remote Sensing and other Spatial Data in Forested Systems
13-14	Philadelphia PA, USA	MAPublisher Training
17-18	Daytona Beach FL, USA	6th Annual CFGIS Workshop
18-21	Alta Gracia, Cordoba, Argentina	Argentinean Congress of Remote Sensing 2012
20-22	San Jose, Costa Rica	12th International Congress on Surveying, Cadastre, Geodesy and Geomatics 2012
24-28	Montevideo, Uruguay	XIX ISTRO Conference and 4th Meeting of the Uruguayan Society of Soil Science . More: http://www.congresos-rohr.com/istro2012
Sep. 30 – Oct. 3	Long Beach CA, USA	Autovation 2012
Sep. 30 – Oct. 4	Portland OR, USA	URISA's Annual Conference for GIS Professionals

OCTOBER 2012

1	Houston TX, USA	Fall 2012 Meeting: New Positioning Techniques
1-3 *NEW*	Bogotá, Colombia	Latin CACS/ISRM Conference
1-4	Portland OR, EUA	URISA's Annual Conference for GIS Professionals
1-5 *NEW*	Medellín, Colombia	Latin American Conference on Informatics
3-5 *NEW*	Guadalajara, México	WODES 2012
4-5	Buenos Aires, Argentina	19th ESRI Users Latin-American Conference
5-6 *NEW*	La Paz, Bolivia	International Conference on Climate Change, Water and Wetlands
8-12 *NEW*	Guayaquil, Ecuador	Seventh Latin American Conference on Learning Objects and Technologies
15-17	Dallas TX, USA	Field Service Interactive
23-25	Mérida, Venezuela	II Venezuelan Congress of Geographic Information Systems GIS (COVESIG)

NOVEMBER 2012

1-4	Vancouver BC, Canada	37th Annual Meeting of the Social Science History Association – Historical Geography and Histories of Capitalism
8-9	Atlanta GA, USA	MAPublisher Training
12-16	Montego Bay, Jamaica	URISA's Caribbean GIS Conference
14-15 *NEW*	Bogotá, Colombia	4G Latin America 2012
14-16 *NEW*	Buenos Aires, Argentina	44th Meeting of the Board of PAIGH
19-23	Cayenne, French Guiana	Symposium SELPER 2012: Earth Observation for a Green Co-developed World Contact: contact@selper2012.com



Global Spatial Data Infrastructure

Latin America and the Caribbean Newsletter

26-29	Montevideo, Uruguay	8th FIG Regional Conference
Nov.4 - Dic.4	Buenos Aires, Argentina	FIG Commission 7th Annual Meeting
NEW		

DECEMBER 2012

5	Buenos Aires, Argentina	FIG Commission 7 International Symposium
NEW		
27-29	Las Vegas NV, USA	IMTA (Americas) 2012 Strategic Planning Session

YEAR 2013

[Year 2013](#) January [February](#) March [April](#) May June July August September October November December

FEBRUARY 2013

11-13	Denver CO, USA	International LIDAR Mapping Forum
NEW		

APRIL 2013

1-5	Havana, Cuba	V Cuban Convention on Earth Sciences - Geosciences 2013
-----	--------------	---

[\(Back to top\)](#)

Please mention SDI-LAC as source of information in any correspondence you may have on items on this issue

To subscribe to SDI-LAC, please do so online at:
<http://www.gsdi.org/newslist/gsdisubscribe.asp>
 Nancy Aguirre, PAIGH, Editor cnaguirre@ipgh.org
 Global Spatial Data Infrastructure Association,
<http://www.gsdi.org>

DISCLAIMER:
 GSDI, PAIGH and the Editor will not be held liable for any errors, mistakes, misprints or incorrect information. Copyright © 2012. All rights reserved.