

# Global Spatial Data Infrastructure Latin America and the Caribbean Newsletter

SDI-LAC

March 2010

Vol. 7, No. 3

Spatial Data Infrastructure-Latin America and the Caribbean (SDI-LAC) is a regional, monthly, and free, electronic newsletter from the [Global Spatial Data Infrastructure Association](#) (GSDI). It focuses on aspects related with Spatial Data Infrastructure, and on GIS, remote sensing, and data management issues, related with SDI in Latin America and the Caribbean. It aims to raise awareness, provide useful information to strengthen national SDI initiatives, and support synchronization of regional efforts.



[GSDI Definition](#)

The [Pan-American Institute of Geography and History](#) (PAIGH), member organization of GSDI, and the [Permanent Committee on Geospatial Data Infrastructure for the Americas](#) (PC-IDEA), promote SDI development in the region. The newsletter is prepared by PAIGH for GSDI.

[Message from the Editor](#)

[Input to this Issue](#)

[SDI News, Links, Papers, Presentations](#)

[Articles and Publications of the Month](#)

[Geospatial Research and Applications](#)

[GIS Tools, Software, Data](#)

[Training Opportunities](#)

[Funding Opportunities, Awards, Support](#)

[Employment Opportunities](#)

[Other](#)

[Americas: Conferences, SDI Events](#)



## Message from the Editor

Due to an increasing volume of information on events, the respective section will be restricted to those events taking place in the Americas. However, for "The Rest of the World: Conferences, SDI Events", please find a link to upcoming events of global or major international interest in GSDI webpage at: <http://www.gsdi.org/events/upcnf.asp>

We kindly inform that SDI-LAC Newsletter is taking correspondent members in each country of the LAC region. Next issues will include their contributions. If you would like to become a correspondent for your country please contact Nancy Aguirre [cnaquirre@ipgh.org](mailto:cnaquirre@ipgh.org). In principle the only requirement is that you are an active member in the Spatial Data Infrastructure activities of your country.

If you have news or information related to GIS, remote sensing, and Spatial Data Infrastructure that you would like to highlight (e.g., projects, conferences, workshop announcements, publications, reports, websites of interest, etc.), kindly send them in. We would be happy to include them in the newsletter.

We also encourage you to send to the editor your comments and suggestions for the continuous improvement of SDI-LAC Newsletter. **PLEASE share this newsletter with colleagues who may find the information useful, and ideally they will subscribe themselves.**

Back issues of the newsletter are at the GSDI website: <http://www.gsdi.org/newsletters.asp>

Editor, Nancy Aguirre, Pan-American Institute of Geography and History (PAIGH), <http://www.ipgh.org>, [cnaquirre@ipgh.org](mailto:cnaquirre@ipgh.org)

SDI-LAC Newsletter



Vol. 7, No.3

# Global Spatial Data Infrastructure Latin America and the Caribbean Newsletter

## Input to this Issue

Thanks for their contributions to this SDI-LAC Newsletter issue to:

Jesús Andrade	Editor Enl@ce Journal, Venezuela
Santiago Borrero	Secretary General, Pan-American Institute of Geography and History, PAIGH, Mexico
Camilo-Mateo Botero	Colombian Students Abroad Network, Colombia
Arturo Brun-Martínez	Architect, Bogota, Colombia
Armando Carbonell	Senior Fellow and Chair, Department of Planning and Urban Form, Lincoln Institute of Land Policy, USA
Ibeth Castro	International Affairs, Risk Management, Ministry of Interior and Justice, Colombia
Ludo Engelen	SADL, K.U.Leuven, Spatial Applications Division Leuven, Leuven, Belgium
Yassine Lassoued	IT Researcher, Coastal and Marine Resources Centre, University College Cork, Ireland
Niti B. Mishra	Graduate Student, Department of Geography and the Environment, University of Texas at Austin, USA
Uriel Murcia	Research Program Coordinator, Amazon Scientific Research Institute Sinchi, Colombia
Ofelia Pérez	General Director, Multidisciplinary Center for Coastal Studies, Universidad de Oriente, Cuba
Michael Raghieb	Colombian Students Abroad Network, Colombia
Eric van Praag	GeoSUR Regional Programa Coordinador, Venezuela
Kenneth Young	Chair and Professor, Department of Geography and the Environment, University of Texas at Austin, USA

[\(Back to Top\)](#)

## SDI News, Links, Papers, Presentations

### GSDI 12 Conference Announcement and Call for Papers and Workshops



For information about this announcement, contact: GSDI Association, Harlan Onsrud, telephone 207-581-2175, e-mail: [onsrud@spatial.maine.edu](mailto:onsrud@spatial.maine.edu)

The GSDI 12 World Conference will take place in the garden city of Singapore from 19 to 22 October 2010. The Partners in organizing this conference include the GSDI Association (<http://www.gsdi.org/>), Permanent Committee on GIS Infrastructure for Asia & the Pacific (<http://www.sbsm.gov.cn/pcgiap/index.htm>) (PCGIAP) and Singapore Land Authority (<http://www.sla.gov.sg/hom/hom/index.htm>) (SLA).

The theme for GSDI 12 is "Realising Spatially Enabled Societies" This conference will explore the complementary roles of government, private industry and the academic community in realizing better means for sharing geographic data and technologies and developing improved location-based services for meeting real world needs.

## Global Spatial Data Infrastructure Latin America and the Caribbean Newsletter

Santiago Borrero, the Secretary General of the Pan American Institute for Geography and History said: "The GSDI Conference is an excellent forum for networking and learning about spatial data infrastructures with experts from around the globe. Each year the conference emphasizes the latest advancements and challenges in leveraging the power of geospatial information and technologies for decision makers worldwide to enhance decision making related to important social, environmental and economic issues."

The 12th GSDI Conference will also host the annual meeting of the Permanent Committee on GIS Infrastructure for Asia & the Pacific (PCGIAP), represented by 56 nations in the region.

The GSDI Association is accepting paper abstracts until **1 April** 2010. Click on "Call for Papers" and "Workshops" at <http://www.gsdi.org/gsdi12> for submission guidelines. Please also visit the GSDI 12 conference website to review information on speakers, the full conference program, and registration and accommodations in Singapore.

The GSDI Association is an inclusive group of organizations, agencies, firms, and individuals from around the world. The purpose of the organization is to promote international cooperation and collaboration in support of local, national and international spatial data infrastructure developments that will allow nations to better address social, economic, and environmental issues of pressing importance.

The Call for Papers may be found with all web links active at <http://www.gsdi.org/gsdi12/papers.html>

The GSDI 12 Conference Abstract and Paper Submission System is at

<http://www.gsdi.org/gsdiconf/gsdi12docs/openconf.php>

Abstract Deadline: **1 April** 2010

Book Chapter Submission Deadline: **15 March** 2010

Refereed Journal Special Issue Deadline: selected from conference full paper submissions.

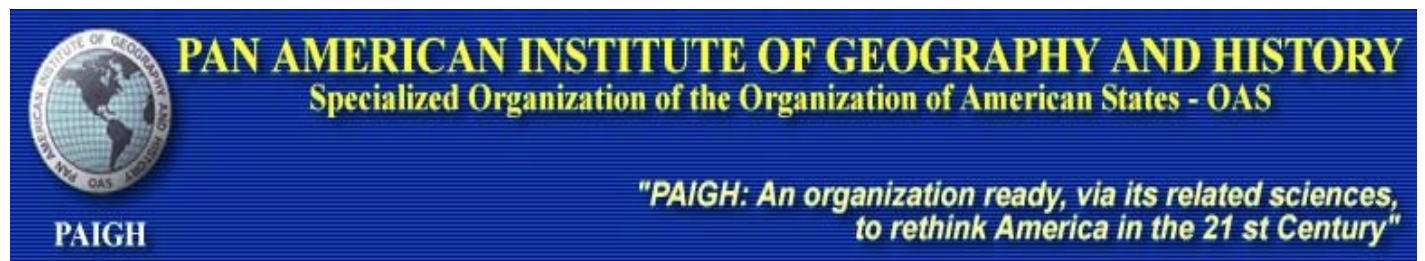
### [SDI Instructional Videos](#)

Source: <http://www.gsdi.org/SDIvideos>

All videos and slides at this web location are made available under the Creative Commons Attribution 3.0 United States License. GSDI Association and Geospatial Society members that would like to submit one or more movies for consideration for posting under the same licensing conditions, please contact [onsrud@gsdi.org](mailto:onsrud@gsdi.org). Please see [Suggestions for Preparing Slides and Movies](#). Additional related instructional videos may be found by searching for terms such as spatial data infrastructure videos, GIS videos, mobile technology videos, location based services videos, and similar terms using your web browser. Alternatively, search specific video web sites such as YouTube.

### [PAIGHS's Pan-American Agenda on the Web](#)

Source: <http://www.ipgh.org/>



Detailed information on the Pan American Agenda of Pan American Institute of Geography and History, including issues related to its regulatory framework and preparatory meetings is now available on the web. For more information please contact: [agendaipgh@ipgh.org](mailto:agendaipgh@ipgh.org)



## Global Spatial Data Infrastructure Latin America and the Caribbean Newsletter

### Ibero-American Network of Geographic Information Infrastructure (R31Geo)

Source: <http://www.geoinstitutos.com/>

On November 18, 2009 in the framework of the 24th Conference of the International Cartographic Association (ICA), held in Santiago, Chile, an act establishing R31Geo was signed. This is the result of thirty successful years of collaboration and joint work between Latin American organizations responsible for official geographic information with support of the Ibero-American Secretariat. R31Geo is an initiative of the National Geographic Institute of Spain, upon the expressed agreement of the Pan American Institute of Geography and History Board during its 41st meeting held in San Salvador (El Salvador), from 19 to 21 November 2008. All senior officials agreed the following: To begin the Process for Establishing the Ibero-American Network of Geographic Information Infrastructure (R31Geo) pursuant to the statutes that may be accessed [here](http://www.geoinstitutos.com/notides.asp?id_noticia=272).

[http://www.geoinstitutos.com/notides.asp?id\\_noticia=272](http://www.geoinstitutos.com/notides.asp?id_noticia=272)

Article 1 - Purpose -1. The Ibero-American Network of Geographic Information Infrastructure (R31Geo) is established in order to coordinate development of geographic information activities inside countries participating in the Ibero-American Conference, aimed at realizing, disseminating and improving knowledge available in each country, and thus achieving interoperability between national geographic information infrastructures of these countries.



### **OGC and World Meteorological Organization to Collaborate on Meteorology Standards**

Source: OGC Press Release

The Open Geospatial Consortium, Inc.(OGC®) and the World Meteorological Organization (WMO) have signed a Memorandum of Understanding (MoU) to enhance the development and use of geospatial standards. It is anticipated that this collaboration will support the implementation of the WMO Information System which aims at providing a single coordinated global infrastructure for the collection and sharing of information in support of all WMO and related international programs. The MoU formalizes the partners' planned collaboration in the development, application, and promotion of standards and best practices for the content and exchange of meteorological, climatological and hydrological data for the benefit of the worldwide scientific and operational communities of meteorologists and hydrologists. "This is an important step forward for both of our organizations", explained Mark Reichardt, President and CEO of the OGC. OGC benefits from the WMO's application of OGC's open standards and direct WMO community involvement in OGC standards process. Members and stakeholders of the WMO will benefit greatly from open standards that improve discovery, sharing and application of diverse collections of information to address important issues related to meteorology. According to Mr Michel Jarraud, Secretary-General of WMO, "the joint activities of OGC and WMO will be instrumental in promoting and advancing technology interoperability for the discovery, access and use of information related to weather, climate and water". [For information about this announcement, please contact: Lance McKee, Senior Consultant, Open Geospatial Consortium (OGC), [mckee@opengeospatial.org](mailto:mckee@opengeospatial.org)]

### Five Years after Brussels: a First Review of GEOSS

Source: GEO News (Issue #7, 19 February 2010)



For the past five years an expanding group of Member countries and Participating Organizations has come together under a voluntary framework to implement the GEOSS initiative. Over the coming months an evaluation team will examine the progress that has been made toward achieving the strategic goals that are intended to achieve the GEOSS Vision: "a future wherein decisions and actions for the benefit of humankind are

## Global Spatial Data Infrastructure Latin America and the Caribbean Newsletter

informed by coordinated, comprehensive and sustained Earth observations and information.” The “GEOSS Mid-term Evaluation” is the first formal review of the GEOSS initiative since the approval of the 10-Year Implementation Plan at the Third Earth Observation Summit in Brussels, Belgium in February 2005. The evaluation will examine the progress that has been made during the first five years of building GEOSS. In particular, the evaluation will look at the strategic foundation that has been laid for GEOSS as well as progress along the path to implementing GEOSS and the impacts of GEOSS in the Earth observing community. Direct feedback from the Earth observation community is necessary to complete this evaluation. GEOSS is both voluntary and user-focused, and the Evaluation Team would like to offer you the chance to contribute to this undertaking. The evaluation team is conducting a survey, interviews, and reaching out to participants to locate other documents and reviews of GEOSS and its components. The [survey is available online](#) and members of the Team are working to establish a presence at upcoming meetings and conferences to collect feedback directly from the users of GEOSS. If you know of research literature, white papers, or other items such as evaluations of GEOSS that could be helpful to the team, or if you have further questions, please contact Team member John Adamec by email at [john.adamec@noaa.gov](mailto:john.adamec@noaa.gov)

### Now available CIDERC Forum, Cuba

Source: <http://www.iderc.co.cu/>



On February 15, 2010 was launched the Committee on Spatial Data Infrastructure of the Republic of Cuba Forum (CIDERC). Forum managers call for participation on discussion topics that will be addressed at <http://www.iderc.co.cu/ciderc/>

### REGME (GNSS Network for Continuous Monitoring in Ecuador)

Source: <http://www.geoportaligm.gov.ec/>

The Military Geographic Institute of Ecuador (in Spanish IGM), lead mapping agency of Ecuador, has set the goal of establishing and maintaining a Geodetic Reference Framework that is compatible with modern measurement techniques currently available such as Global Navigation Satellite Systems (GPS, GLONASS and GALILEO in the near future). IGM with support of public and private institutions in the country has established REGME, which is currently comprised by 7 stations distributed along the country. More information (in Spanish) in the article: [Why should GNSS Continuous Monitoring Stations be Established in Ecuador?](#)



### **FOSS4G Community in Chile**


Source: <http://snitchile.blogspot.com/>

Chile was represented by Cesar Medina of the [Urban Observatory Web site](#) of the Ministry of Housing and Urban Development at the 2009 FOSS4G Conference (Free and Open Source Software for Geospatial) held in Sydney Australia. Cesar invites us to participate in [FOSS4G-Chile](#), which is an initiative for gathering and exchanging experiences and knowledge from specialists in the field. FOSS4G will be held in 2010 in Barcelona (<http://2010.foss4g.org/se>). More about FOSS4G-Chile at the following links: <http://foss4gchile.blogspot.com/2010/01/comunidad-foss4g-en-chile-cooming-soon.html> and <http://www.foss4g-chile.org/>. If you want to get more involved with this initiative you may also register at <http://www.linkedin.com>, and add to the group on "Geographic Information Systems Chile (FOSS4G)" that has the same goal than the webpage.

# Global Spatial Data Infrastructure Latin America and the Caribbean Newsletter

## [Document for the implementation of Spatial Data Infrastructure in Brazil](#)

Source: <http://www.mundogeo.com.br/>

 Ministério do Planejamento, Orçamento e Gestão



## Comissão Nacional de Cartografia

The Brazilian National Commission for Cartography (in Portuguese CONCAR) launched the Action Plan for implementing the National Spatial Data Infrastructure (NSDI) in Brazil. The NSDI was legally established by Presidential Decree 6666, dated 27 November 2008. In addition to developing definitions, assigning responsibilities and establishing guidelines, the decree provided for a period of 180 days for CONCAR to develop an action plan for the establishment of the NSDI to be submitted to the Ministry of Planning, Budget and Management. For this purpose it was created the Planning Committee on Spatial Data Infrastructure (in Portuguese CINDE), which brings together 110 members, representatives of 26 Brazilian organizations of which 22 are linked to the federal government, 3 to state secretaries and one is link to the academic sector. At the time, results of this work are being shared with different stakeholders. Starting this year, the NSDI will be effectively implemented following the guidelines outlined in this document. [Full text of the Action Plan for Implementation of the Spatial Data Infrastructure published in January 2010 is available at: <http://www.concar.ibge.gov.br/arquivo/PlanoDeAcaoINDE.pdf>]

## [Coordinating Committee on Spatial Data Infrastructure of Peru \(CCIDEP\) implements GEOIDEP](#)

Source: <http://www.ccidep.gob.pe/>



The Standing Coordinating Committee on Spatial Data Infrastructure of Peru (in Spanish CCIDEP) aims to promote and coordinate the development, exchange and use of spatial data and information services among all levels of government, private sector, nonprofit organizations, academic and research institutions. The CCIDEP will be attached to the Presidency of the Council of Ministers, who will provide technical and administrative assistance as may be required, through the National Office of Electronic Government and Information Technology (in Spanish ONGEI). GEOIDEP geoportal provides an entry point for accessing geographic information of the Peruvian territory.

## [Croatia Launches First Spatial Data Infrastructure in Southeast Europe](#)

Source: <http://www.esri.com/>



The Republic of Croatia has simplified access to countrywide geographic data through an online geoportal, a type of Web site that makes it easier for citizens, government, and private-sector users to find and access vast quantities of geographic information and related services. The geoportal has already proven its value as an essential component of the country's Organized Land Project, which streamlines and regulates the real property registration of land in the republic. By making data more accessible, the average time for processing changes to land titles has dropped from a 400-day average to 37 days. The geoportal is hosted by the State Geodetic Authority (SGA) of Croatia and can be found at [www.geo-portal.hr/Portal](http://www.geo-portal.hr/Portal).



## Global Spatial Data Infrastructure Latin America and the Caribbean Newsletter

### [Invitation to LARS 2010](#)

Source: <http://www.lars.cl/> by way of Santiago Borrero



The Chilean Air Force's "Servicio Aerofotogramétrico" is pleased to organize the first version of the Latin American Remote Sensing Week, "South Explorers", LARS, with the sponsorship of the International Society for Photogrammetry and Remote Sensing (ISPRS) and the Latin-American Society of Specialists on Remote Sensing and Spatial Information Systems (SELPER, for its acronym in Spanish). Remote sensors and geospatial data have an increasingly important role on decision making, allowing the central government, local administrations, non-governmental organizations, commercial sector, academic community and common people to resolve from a territorial perspective the problems that afflict them. For this reason, LARS is an opportunity for scientists, academics, organizations and companies to present their research and to exhibit the latest scientific and technological breakthroughs in the field of Remote Sensing. We invite you to share with all of those who are interested to meet the latest scientific and technological breakthroughs in subjects of Remote Sensing, as well as the wide variety of applications in this field, in what is expected to be a stimulating international meeting, with outstanding lecturers and special guests. Likewise, we encourage both researchers and developers of applications in the field of Remote Sensing to submit the results of their unpublished research, contributing to the development of geosciences and Knowledge Exchange. LARS will take place in Santiago de Chile, from October 4th to 8th, 2010. Do not miss the chance to participate in scientific exhibitions, workshops and high-level technological demonstrations, and enjoying cultural and leisure activities. Abstract deadline: **April 30, 2010.**

### [2nd Hemispheric Meeting on Risk Reduction Mechanisms and National Networks](#)

Source: Ibeth Castro by way of Santiago Borrero



The 2nd Hemispheric Meeting on Risk Reduction Mechanisms and National Networks, "Santa Marta Meeting: From Theory to Practice" will take place between 14 to 16 April 2010, in Santa Marta, Colombia. The meeting in Santa Marta is organized and convened by the government of Colombia, through the Ministry of Interior and Justice and its Office of Risk Management (DGR), the Secretary General of the Organization of American States (GS/OAS) through its Department of Sustainable Development (OAS/DSD), and the Secretary of the United Nations International Strategy for Disaster Reduction (UNISDR), through its Regional Office for the Americas, UNISDR Americas. The main objective of the meeting is to exchange successful experiences and good practices in the areas of Risk Management and Adaptation to Climate Change, implemented by existing mechanisms and networks in the hemisphere, in order to move forward in building and strengthening National Disaster Reduction Platforms under the Hyogo Framework for Action. Deadline for submitting experiences and good practices in disaster risk reduction and adaptation to climate change is **March 15, 2010.** More information at: <http://www.eird.org/encuentro-sta-marta/index.html>

## Global Spatial Data Infrastructure Latin America and the Caribbean Newsletter

### CARICOSTAS 2011

Source: Ofelia Pérez

The Center for Multidisciplinary Studies on Coastal Areas at Universidad de Oriente de Cuba (CEMZOC), invites you to the V International Conference on Integrated Management of Coastal Zones, CARICOSTAS 2011, "Integration for sustainability of coastal ecosystems". CARICOSTAS website is found at:

[http://www.cemzoc.uo.edu.cu/index.php?option=com\\_content&task=view&id=24&Itemid=1](http://www.cemzoc.uo.edu.cu/index.php?option=com_content&task=view&id=24&Itemid=1)

CARICOSTAS will be held at Santiago de Cuba, from May 11 to 13, 2011. The organizing committee will receive summaries until **April 20**, 2011. Contact: Dr. Ofelia Pérez Montero, Director, Center for Multidisciplinary Studies on Coastal Areas, Universidad de Oriente, E-mail: [caricostas@cemzoc.uo.edu.cu](mailto:caricostas@cemzoc.uo.edu.cu) ; [ofelia@csh.uo.edu.cu](mailto:ofelia@csh.uo.edu.cu)

### Access to Knowledge (A2K) and Human Rights Conference

Source: <http://yaleisp.org/>; Arturo Brun-Martinez



This conference held on February 11-13, 2010 at Yale Law School, sought to lay the groundwork –conceptual and strategic– to build bridges between the A2K and human rights communities pursuing common goals of promoting greater access to knowledge, culture, technology and tools for innovation worldwide. The conference comprises eight panels. From these, panel 4 is highlighted:

#### [A2K4 Panel V: Freedom to Innovate: Knowledge, Technology, Culture](#)

We live in an age of decentralized innovation in which civil liberties and cultural freedom depend on the freedom to innovate and share innovations with others. Increasingly, cultural freedom, access to knowledge, and freedom of expression depend on the ability of entrepreneurs to create new tools for sharing, producing, and distributing content. Increasingly, new ideas and new designs come from open source entrepreneurship communities in which loosely affiliated groups of individuals produce new knowledge and new technological tools. Innovation in software and hardware is inextricably connected to cultural innovation and the dissemination of knowledge. For these reasons, we can no longer protect civil liberties without paying attention to innovation policy and particularly to the individual freedoms to create, modify, distribute, and share advancements in information production and information technology. This freedom to innovate requires an open information infrastructure in which telecommunications policy, intellectual

property laws, and technological architectures leave individuals free to build new things out of old, to remix, create, tinker, and repurpose. Blogging, video, and discussion of the conference may be followed at <http://yaleisp.org>. The best link for accessing these materials is: <http://yaleisp.org/2010/02/a2k4main>

### **ISPRS/ESPI/IAA/IISL conference program: Current legal issues for satellite Earth observation**

Source: Santiago Borrero

ISPRS/ESPI/IAA/IISL conference on "Current legal issues for satellite Earth observation" will be held on April 8-9, 2010 in Vienna, Austria. This Conference deals with two important and topical aspects of satellite Earth observation: treaty monitoring and law enforcement through satellite Earth observation, and privacy conflicts from high resolution imagery. It brings together experts from the remote sensing and in the legal fields. It aims at decision-makers in the field of treaty monitoring and international law enforcement (Foreign and Environment Ministries, international organizations). This provides the unique opportunity to discuss the different implications stemming from the technology developments and applications as well as from legal and regulatory perspectives. The focus of the discussions at this Conference is to optimize the regulatory framework for satellite Earth observation thus supporting the full implementation of its potentials. Please see more detailed information inside the [Conference Brochure](#) and at <http://www.espi.or.at/>  
Registration: [office@espi.or.at](mailto:office@espi.or.at)



# Global Spatial Data Infrastructure Latin America and the Caribbean Newsletter

## AGILE 2010 Pre-Conference Workshop on Spatial Thinking

Source: Ludo Engelen by way of Santiago Borrero



Spatial literacy, and associated ideas such as spatial thinking and spatial cognition, have been the focus of several recent and distinctive academic initiatives and programs around the globe (e.g. LENS, CSISS, SPLINT). Shared goals include a better understanding of the ways in which we think and learn spatially, and an application of that knowledge to educational domains. This understanding has implications for the ways in which we teach and learn GIS and the utility of GIS as a tool for addressing spatially-based problems in the world. The rise of Web 2.0 and lay-engagement with digital neo-geographies make understanding how we develop and encourage good spatial practice even more important. The workshop will take place on 11th May as a pre-conference workshop of the [13th AGILE International Conference on Geographic Information Science](#) in Guimarães, Portugal. All workshop participants have to register through the [AGILE conference website](#). Please send your submission by e-mail to Mrs Janet Carter, [jc115@le.ac.uk](mailto:jc115@le.ac.uk). Deadline for submission is **March 27**, 2010.

## [ESPI joins "Women in Aerospace Europe" as Europe's first institutional member](#)

Source: <http://www.espi.or.at/>



The European Space Policy Institute (ESPI) joined "[Women in Aerospace Europe](#)", which is dedicated to expanding women's opportunities for leadership and increasing their visibility in the aerospace community, by creating a Network in Europe and across the globe. Being the number one network in Europe and globally for women in the aerospace field, "Women in Aerospace Europe" welcomed ESPI as Europe's institutional member. ESPI will bring to the organization and its network policy insights based on its work as a think tank as well as opportunities to meet at ESPI. Through this, the visibility of the Institute will also be raised. Another reason for joining is that ESPI's research staff is currently around 80 percent female. The Institute's staff therefore will in a large number benefit from the access to the Women in Aerospace networks in Europe and in other parts of the world.

## [GeoWeb 2010: Call for Presentations & Workshops](#)

Source: <http://geowebconference.org/>

GeoWeb 2010 will take place in Vancouver, Canada, July 26-30 and its organizers are currently seeking submissions for presentations and workshops. All submissions must be submitted via the online form at [www.geowebconference.org](http://www.geowebconference.org) no later than March 12, 2010 (4pm PST). GeoWeb conference is focused on the collective impact of the Web on geographic information standards, architectures and technology and the convergence of GIS and the Internet and the resulting economic, social and technical consequences. The emphasis for GeoWeb 2010 is Going Real Time. GeoWeb is about the technologies for information sharing and collaboration respecting events and activities in the real world. Contact: [info@geowebconference.org](mailto:info@geowebconference.org).



[\(Back to Top\)](#)

# Global Spatial Data Infrastructure Latin America and the Caribbean Newsletter

## Articles and Publications of the Month

### [Haiti: from zero to SDI in a week](#)

Published at <http://blog-idee.blogspot.com/> by Iván Sánchez Ortega of OpenStreetMap Spain

Excerpts from the article:

Unless you live under a rock, you know that in Haiti an earthquake has occurred, with journalists taking photographs of children taken out of the rubble. An earthquake affects all infrastructures: roads, power grids, water and wastewater, and telecommunications. In addition, a natural disaster of this magnitude also affects the infrastructure of infrastructures: geographic information. By studying the behavior of humanitarian response, and how they use new technologies, it has been possible to identify a pattern of technological innovation for disasters... When an event that requires humanitarian aid occurs, new technologies are applied ad hoc: that is, technology is used by individual workers who know it in advance, without really knowing if it is proven, or if it will work well, because they need something that works, and that works now. Of all the technologies being introduced, there will be some that work better, and help, and others that work worse and interfere. The technologies that work better (the champions) will have

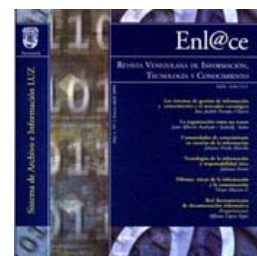


improvements, modifications, or produce new technologies, while the losers do not. And the cycle repeats. In cases of natural disasters or humanitarian crises, response teams need things that work and that already work. These include maps: I need updated maps, and I need updates now. People responsible for making these maps, meanwhile, want these maps to serve, with no compatibility or legal issues. Questions on how mapping can and should help in these cases are worth being discussed in depth. [The full article may be found at: <http://blog-idee.blogspot.com/2010/01/haiti-de-cero-ide-en-una-semana.html>]

### [Enl@ce - Venezuelan Journal on Information, Technology and Knowledge, 2009](#)

Source: Jesus Andrade

Enl@ce is a Journal of the University of Zulia, Venezuela. Is a quarterly journal for disseminating works related to information science, knowledge management, and computer and information technologies. Last issue of Enl@ce Vol 6 No. 3 (year 2009) is now available. In the near future this journal will be available at [Redalyc](#), [Dialnet](#) and [SciELO](#) of Venezuela. At the journal's blog <http://rvitc.blogspot.com/> you may find information for authors and on accreditation. All works published in Enl@ce are available for download at Dialnet website: [http://dialnet.unirioja.es/servlet/revista?tipo\\_busqueda=CODIGO&clave\\_revista=7671](http://dialnet.unirioja.es/servlet/revista?tipo_busqueda=CODIGO&clave_revista=7671).



### [Complete archive of SELPER Journal on the web](#)

Source: <http://www.selper.org/>

SELPER is pleased to announce to SELPER partners and the wider community that now is available the complete archive of SELPER Journal. Access is free to all journal issues. Please log on to "[Revista Selper](#)".

### [Is 3D GIS About to Revolutionize Visualization?](#)

Source: V1 Magazine, February 2010

The development and release of 3D GIS is a major step forward into the future. It will undoubtedly cause a stir, several people to scratch their heads and unleash a wave of new thinking that we have not experienced in the geocommunity for quite some time. It will cross disciplines, open doors and stir the pot of contented individuals who thought we had gone as far as we could go. Visualization is poised to sky rocket in terms of activity due to new ways for interpreting problems, understanding their nature and representing their interactions. Is 3D GIS about to revolutionize visualization?

## Global Spatial Data Infrastructure Latin America and the Caribbean Newsletter

In some ways we have settled into a comfort zone at the present moment in terms of geovisualisation and mapping. While we enjoy placing locations with feature information on 3D globes, and that has helped millions of people to engage in the mapping and graphics of the world, but an expanded world built on 3D objects that can be spatially analysed and represented in new high resolution ways is about to unfold through 3D GIS

<http://www.vector1media.com/dialogue/perspectives/11402-is-3d-gis-about-to-revolutionize-visualization>

### **OGC candidate 3D Standards**

Source: <http://www.geoconnexion.com/>

OGC publishes a new set of candidate 3D standards: Web 3D Service (W3DS), WVS and 3D Symbology Encoding (3D SE). The Open Geospatial Consortium

(OGC) has published three new candidate standards which are related to the 3D GeoWeb as public discussion papers (DP) on its website (<http://www.opengeospatial.org/standards/dp>). These establish a new family of 3D portrayal services focusing on virtual 3D maps, interactive virtual environments, and 3D cartographic visualization.



[\(Back to Top\)](#)

## Geospatial Research and Applications

### **New Territorial Environmental Information System for the Colombian Amazon SIAT-AC**

Source: Uriel Murcia



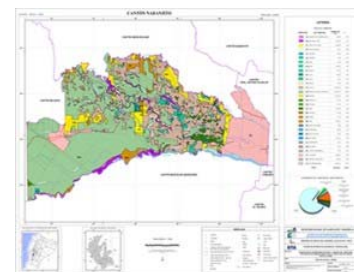
Online GIS Models: As part of the consolidation process of the Territorial Environmental Information System of the Colombian Amazon (SIAT-AC <http://siatac.siac.net.co>) and aimed at providing tools to support decision making by planners, regional authorities, researchers and stakeholders, last December 2009 it was launched to web users an application that enables the construction or use of geo-referenced information analytical models over the Internet. This tool is fully developed with free software, it allows loading of information layers by users, and the use of existing information and models within the

repository <http://siatac.siac.net.co/web/guest/modelos>

### **Geoinformation for autonomous governments of Ecuador**

Source: <http://www.clirsen.com/>

The National Secretariat of Planning and Development (in Spanish SENPLADES), designated the Center for Integrated Surveys of Natural Resources with Remote Sensing (in Spanish CLIRSEN) since 2009 as the executing agency for the project "Geo-information Production for Rural Land Management and Valuation in Guayas River Basin, at scale of 1:25,000". This project seeks to produce geoinformation as a technical tool that may lead to better guidelines for using space and reducing regional and local disparities, underpinned by appropriate land use, balanced territorial occupation and natural hazard assessment of Guayas River.



### **Clark Labs Receives Support from Google to Develop On-line Prototype of Land Change Modeler**

Source: <http://spatialnews.geocomm.com/>

Google has contracted Clark Labs to develop an on-line prototype of the Land Change Modeler application to run on Google's Earth Engine interface. This development complements the on-line forest monitoring applications of Carnegie Institution for Science (CLASlite) and IMAZON (SAD). The hope is that this on-line system will help support the implementation and evaluation of REDD (Reducing Emissions from Deforestation and Degradation) projects. The intent of REDD is to assign financial value to the carbon stored in forests such that sequestration of that carbon becomes a viable alternative to other uses such as conversion to pasture and farmland. The Land Change Modeler



## Global Spatial Data Infrastructure Latin America and the Caribbean Newsletter

provides a critical ingredient for REDD projects in that it can be used to establish the Business-As-Usual (BAU) baseline that projects the future deforestation in the absence of a REDD project. Quantification of this projected deforestation and comparison with various governance scenarios provides the basis for evaluation of the carbon stocks involved and potential compensation. It is hoped that the REDD program will lead to a significant reduction in CO<sub>2</sub> emissions, enhance ecosystem services and biodiversity conservation, and provide opportunities for poverty reduction.

### [CATHALAC and OLADE will promote sustainable energy development in LAC](#)

Source: CATHALAC News



On February 18, 2010, the Executive Secretary of the Latin American Energy Organization (OLADE its acronym in Spanish), Carlos A. Flores Piedrahita, and the Director of the Water Center for the Humid Tropics of Latin America and the Caribbean (CATHALAC), Emilio Sempris, signed a Memorandum of Understanding (MOU) to promote sustainable energy development in the region. The MOU establishes a framework for cooperation between OLADE and CATHALAC to develop activities, projects and programs together in areas of specialized collaboration such as natural resources and energy, integrated management of water resources for sustainable energy development, mapping and renewable energy use and an evaluation of climate change impacts in the energy sector of Latin America and the Caribbean. OLADE's Executive Secretary, Mr. Flores, noted that "under this agreement, each organization will create regional assessments on the interaction between energy systems and natural resources, with particular emphasis on the role of climate change on infrastructure and energy resources in Latin America and the Caribbean." On behalf of CATHALAC, Director Sempris stressed the importance of incorporating emerging environmental concepts such as strategic environmental assessments and estimates of ecological flow (estimates of water flow volumes necessary to maintain current ecosystems) in the processes of decision making in regional energy development. The first joint evaluations are expected to be presented in the framework of the XXXVII Meeting of Latin American Energy Ministers to be held in Managua, Nicaragua in October 2010 and at the XVI United Nations Conference Framework Convention on Climate Change to be held in Cancun, Mexico in December 2010. OLADE is an independent, international agency that promotes cooperation, coordination and technical assistance. On November 2, 1973, OLADE was established as a legally recognized entity after the signing and ratification of the Lima Agreement by its 26 member countries of Latin America and the Caribbean. OLADE's primary purpose is to promote integrate, development, conservation, rational use and marketing and protection of energy resources in the region. CATHALAC, established in 1992, is an international organization whose aim is to promote sustainable development through applied research and development, through education and through the transfer of technology in the humid tropics of Latin America and the Caribbean.

### [Ice Shelves Disappearing on Antarctic Peninsula: Glacier Retreat and Sea Level Rise are Possible Consequences](#)

Source: <http://www.usgs.gov/>

Ice shelves are retreating in the southern section of the Antarctic Peninsula due to climate change. This could result in glacier retreat and sea-level rise if warming continues, threatening coastal communities and low-lying islands worldwide. Research by the U.S. Geological Survey (USGS) is the first to document that every ice front in the southern part of the Antarctic Peninsula has been retreating overall from 1947 to 2009, with the most dramatic changes occurring since 1990. The USGS previously documented that the majority of ice fronts on the entire Peninsula have also retreated during the late 20th century and into the early 21st century. The ice shelves are attached to the continent and already floating, holding in place the Antarctic ice sheet that covers about 98 percent of the Antarctic continent. As the ice shelves break off, it is easier for outlet glaciers and ice streams from the ice sheet to flow



## Global Spatial Data Infrastructure Latin America and the Caribbean Newsletter

into the sea. The transition of that ice from land to the ocean is what raises sea level. The USGS is working collaboratively on this project with the British Antarctic Survey, with the assistance of the Scott Polar Research Institute and Germany's Bundesamt für Kartographie und Geodäsie. The research is also part of the USGS Glacier Studies Project, which is monitoring and describing glacier extent and change over the whole planet using satellite imagery. The report, "[Coastal-Change and Glaciological Map of the Palmer Land Area, Antarctica: 1947—2009](#)" and its accompanying map is available online. The other completed reports in the Coastal Change and Glaciological Maps of Antarctica series can be viewed [online](#). See Palmer Land map at: <http://pubs.usgs.gov/imap/i-2600-c/pdf/PalmerLand.pdf>

[\(Back to Top\)](#)

### GIS Tools, Software, Data

#### [Maps and spatial links on Haiti](#)

Source: <http://www.ipgh.org/>

The Pan-American Institute of Geography and History (PAIGH) has prepared a list of websites that comprise spatial information on Haiti. These links are maintained in [PAIGH's website](#). The list contains the following resources:

- Maps from MINUSTAH GIS and UN Cartographic Section  
<http://www.un.org/Depts/Cartographic/english/htmain.htm>
- ESRI <http://www.arcgisonline.com/home/search.html?t=content&q=haiti>
- SDI Haiti <http://carboncloud.blogspot.com/>
- MIT <http://web.mit.edu/newsoffice/2010/mit-haiti-0114.html?tr=y&auid=5856800>
- V1 Newsletter <http://www.vector1media.com/dialogue/perspectives/11325-what-can-be-learned-from-the-volunteer-mapping-efforts-for-haiti>
- UNSPIDER <http://www.un-spider.org/haiti>; [http://www.un-spider.org/sites/default/files/UN-SPIDER\\_Updates\\_Janua](http://www.un-spider.org/sites/default/files/UN-SPIDER_Updates_Janua)
- Hazards and safety issues related to earthquakes in the Caribbean region: Press Service of the United States Geological Survey (Posted January 21, 2010 in [English](#), [Spanish](#) and [French](#))

#### [GEO Supersites speed access to space data on Haiti earthquake](#)

Source: GEO News (Issue #7, 19 February 2010)

A new web portal for the "[Haiti Supersite](#)" was established as an impressively rapid response to the devastating earthquake that struck Port au Prince on 12 January. This marks the first time that satellite agencies have provided data –and provided them quickly– to a central data repository accessible by researchers. As a result, researchers were able to generate early analyses of aftershock hazards and information products of benefit to both scientists and operational users. The [Geohazard Supersites](#) and their associated web portals were initiated last year by the geohazard scientific community as a contribution to the Group on Earth Observations (GEO). The Supersites have data for the study of natural hazards in geologically active regions, including information from Synthetic Aperture Radar (SAR), GPS crustal deformation measurements, and seismic data.

The data are provided in the spirit of GEO, European Space Agency (ESA), National Aeronautics and Space Administration (NASA) and the National Science Foundation (NSF), that easy access to Earth science data will promote their use and advance scientific research, ultimately leading to reduced loss of life from natural hazards. There are currently three volcano Supersites –Mt.

Etna, Vesuvius/Campi Phlegreii and Hawaii– and four earthquake Supersites –Istanbul, Tokyo, Vancouver/Seattle and Los Angeles. "Event Supersites" have been established for the 2009 L'Aquila earthquake and, most recently, for Haiti. The Haiti Supersite's portal also facilitates the exchange of data products such as seismic maps, damage maps, topography data, visible and infrared images, interferograms, and useful links.



## Global Spatial Data Infrastructure Latin America and the Caribbean Newsletter

### [ERDAS Releases a New Version of its Free 3D Visualization Client](#)

Source: <http://www.erdas.com/> by way of Arturo Brun-Martinez

ERDAS announces the release of ERDAS Titan Client 2010, a free, downloadable 3D visualization client that includes the ERDAS Titan Viewer and the Geospatial Instant Messenger (GeoIM). The ERDAS Titan Viewer supports visualization of data and web services from a variety of enterprise applications and allows users to create sharable data and content mashups in a 3D globe. The GeoIM enables permission-based desktop data publishing and consumption. The ERDAS Titan Client seamlessly connects to ERDAS Apollo. ERDAS Apollo is a geospatial enterprise product equipped to fully understand, competently manage and rapidly serve large volumes of vector, raster and terrain data.

### [IGN-CNIG of Spain launches geographic data download](#)

Source: <http://blog-idee.blogspot.com/>



From February 15, 2010 was launched the National Geographical Institute National Center for Geographic information of Spain (IGN-CNIG) Download Center, which provides free access to most geographic information produced by the National Geographic Institute and distributed by the National Center for Geographic Information, including updated aerial orthophotographs and mapping at scale of 1:25,000 of the entire Spanish territory. Access is via the CNIG website or, more directly, through the Download Center at <http://centrodedescargas.cnig.es/CentroDescargas/index.jsp>

[\(Back to Top\)](#)

## Training Opportunities

### [Training Workshop on Multi-Hazard Early Warning Systems with focus on Institutional Partnerships and Cooperation](#)



Source: Eric van Praag by way of Santiago Borrero

This Workshop will take place on March 22-25, 2010 in San Jose, Costa Rica. The scope of the training workshop on “MultiHazard Early Warning Systems with Focus on Institutional Partnerships and Coordination” includes policy, planning, legislative, institutional partnerships and cooperation aspects of EWS. Within this context, the workshop highlights the importance of a strong partnership between the National Disaster Risk Management Agencies and the National Meteorological and Hydrological Services. The workshop is targeted at directors and senior executives of National Disaster Risk Management Agencies, National Meteorological and Hydrological Services and other ministries and agencies engaged in EWS in Central America and the Caribbean. For more information on this workshop please contact: Dr. Maryam Golnaraghi, Chief, Disaster Risk Reduction, World Meteorological Organization, Tel: 41.22.730.8006; Fax: 41.22.730.8128, E-mail: [mgolnaraghi@wmo.int](mailto:mgolnaraghi@wmo.int)



## Global Spatial Data Infrastructure Latin America and the Caribbean Newsletter

### [Professional Development Course on Comparative Analysis of Property Tax in Latin America](#)

Source: <https://www.lincolnst.edu/>

This course will be held on April 26-30, 2010 in San Jose, Costa Rica. The course combines lectures, presentations and analysis of practical experiences (case studies), exercises and moderated debates among groups of participants. It is expected that all participants have an active role during the course, through the exchange of lessons, innovative experiences and points of view. There is no registration fee for the course. Taking the challenges faced in Costa Rica as a case study, the eighth edition of the course will devote attention to evaluating issues of collective interest, such as: the relationship between property taxes and other taxes; local finance models; property tax fiscal design; fiscal decentralization; re-structuring cadastral projects and routines for continuous updating of data; mass appraisal and quality control of work; reducing tax evasion (tax collection and debt recovery); attention to the taxpayer; and performance indicators to evaluate the performance of the tax. Special attention will be given to issues of implementation of tax reforms and administrative revisions of property tax.

### **CENPER-CLIRSEN Course Schedule 2010, Ecuador**

Source: <http://www.clirsen.com/>



Is now available the "Technological Transfer Events Schedule 2010" for first quarter of the year at the Training Center in Remote Sensing (CENPE)

- [Database, GIS and Metadata ", March 8-12, 2010](#)
- [Remote sensing and project information management on: "Building Basic Mapping", March 8-10, 2010](#)
- [Remote sensing and project information management on: " Land Use and Land Cover", March 15-17, 2010](#)
- [Seminar: "Introduction to GIS and its applications", March 22-26, 2010](#)

More course details at: [http://www.clirsen.com/clirsen/dmdocuments/cronog\\_primercuatri2010.pdf](http://www.clirsen.com/clirsen/dmdocuments/cronog_primercuatri2010.pdf)

### **[Gislands 2010](#)**

Source: <http://caribbean-gis.blogspot.com/>

The University of the Azores has launched the 1st International Summer School on Geotechnologies Applied to Marine Spatial Planning (MSP) - [Gislands 2010](#). The course is a 6-day exercise (7-12 August 2010) in the [Azores](#) with resource persons in MSP, Integrated Coastal Zone Management (ICZM), GIS, Remote Sensing, Environmental Modelling and Spatial Data Infrastructure (SDI). The course is free but applicants are subject to evaluation and must cover their own costs. Application deadline: **4 April 2010**.

# Global Spatial Data Infrastructure Latin America and the Caribbean Newsletter

## [Distance Education on Geoinformatics at ITC](#)

Source: <http://www.itc.nl/>



Faculty of Geo-Information Science and Earth Observation

UNIVERSITY OF TWENTE.

Registrations for Distance Education certificate courses are now open at the Faculty of Geo-Information Science and Earth Observation (ITC) of the University of Twente:

- [Principles of Remote Sensing, 17 May 2010, 8 weeks](#)
- [Principles of Geographical Information Systems, 6 September 2010, 7 weeks](#)
- [Principles of Databases, 4 October 2010, 8 weeks](#)
- [Spatial Decision Support Systems, 11 October 2010, 8 weeks](#)

For detailed information please log on to: <http://www.itc.nl/Pub/Study/CourseFinder>

## [United Nations University and ESRI to Collaborate on GIS Research and Training](#)

Source: <http://www.esri.com/>

GIS Technology Expanded to 15 United Nations University (UNU) Campuses. ESRI and UNU recently approved a memorandum of understanding (MoU) at the university's headquarters in Tokyo, Japan. They will collaborate on research, create Centers of Excellence, promote the exchange of graduate students, and provide Geographic Information System (GIS) training opportunities within and by UNU. "This agreement will promote enhanced spatial information use in UNU's research and education initiatives," said UNU rector and under-secretary-general of the United Nations professor Konrad Osterwalder. "It will also support the increased presence of young researchers at UNU campuses and complement existing and planned research and education programs." For more information about ESRI's higher education program, visit [www.esri.com/university](http://www.esri.com/university)

## **ESA Earth Observation Summer School**

Source: Niti B. Mishra



On the occasion of the 5th Earth Observation (EO) Summer School on "Earth System Monitoring & Modelling", the European Space Agency (ESA) would like to invite young researchers to join leading experts in Earth Observation, Modelling and Data Assimilation for keynote lectures, hands-on computing practical and poster sessions. The EO Summer School will be held in ESRIN (Frascati, near Rome), 2-13 August 2010. More information can be found on <http://envisat.esa.int/envschool/>. Applications should be made on-line no later than **15 March** 2010. All enquiries should be addressed to [envschool@esa.int](mailto:envschool@esa.int)

[\(Back to Top\)](#)

## Funding Opportunities, Awards, Support

### **Planning and Urban Form Research Fellowships**

Source: Armando Carbonell

The Lincoln Institute of Land Policy and the Department of Planning and Urban Form invite applications for Planning and Urban Form Research Fellowships in support of major research projects. In this solicitation, we are seeking

**SDI-LAC Newsletter**



16

**Vol. 7, No.3**

## Global Spatial Data Infrastructure Latin America and the Caribbean Newsletter

research proposals that address the theme of climate change, including: The effect of urban density, connectivity, and mix of land uses on greenhouse gas emissions; regional planning responses to climate change, as are currently being implemented in California; and managing the risks presented by extreme weather, including increased flooding, wildfires, drought, and exacerbation of the urban heat island effect. We particularly invite proposals from researchers who have not previously worked with the Lincoln Institute. The full Research Fellowship Application Guidelines are available for downloading [here](#). If after reviewing this material you have further questions, please contact [fellowships@lincolninst.edu](mailto:fellowships@lincolninst.edu). Applications are due by e-mail on or before **April 1, 2010**. Fellowship awards will be announced by May 31, 2010.

### IAI Training Institute on the use of seasonal climate predictions for applications in Latin America

Source: Kenneth Young

The IAI Training Institute will take place on August 2- 13, 2010 in Buenos Aires, Argentina. The overall objective is to increase local and regional capacity on the use of seasonal prediction tailored to user needs in different socioeconomic sectors (agriculture, health, water resources, disaster risk reduction, etc.) of Latin America. The Training Institute will be hosted by the School of Exact and Natural Sciences of the University of Buenos Aires (FCEN/UBA) in Argentina, in collaboration with the IAI and the International Research Institute for Climate and Society (IRI). The Training Institute is funded by the US National Science Foundation (NSF) and co-sponsored by the World Climate Research Program (WCRP). The course will consist of two weeks of lectures, seminars, discussions and practical exercises. Main topics are: 1) From global to regional seasonal predictions; 2) Translating science into applied knowledge to inform decision making; 3) Use of climate information: Experiences and needs in disaster risk reduction; in the agricultural, water management sector; and the health sector. The Training Institute is designed for graduate students and young scientists/professionals from the Americas, particularly from IAI member countries (Argentina, Brazil, Bolivia, Canada, Chile, Colombia, Costa Rica, Cuba, Dominican Republic, Ecuador, Guatemala, Jamaica, Mexico, Panama, Paraguay, Peru, Uruguay, USA, and Venezuela). All applicants must provide: A short curriculum vitae; A written letter of intent describing the motivation for participation and its connection to the applicant's area of study or work (these documents may be in English or Spanish). The candidates should also describe the practical application on which they will work in the course and the data that they will use; A letter of recommendation is strongly encouraged, but it is not required. Applications must be submitted online at the website: <http://iaibr1.iai.int/TrainingOpportunities/IAIseasonalpredictions2010TI> Applications are due **1 April, 2010** by 23:00 hs Sao Paulo (Brazil) time (applications received after this date or incomplete will not be considered). Decision on the application process will be communicated to all applicants by the end of May, 2010. Language Requirement: All sessions of the Training Institute will be conducted in English or Spanish and participants must be proficient in one and have a sound understanding in the other language. Travel Support and Visas: Funds are available for travel support, including airfare, lodging and meals. Travel arrangements will be made for all successful applicants through the IAI. Participants should not make separate travel arrangements as there is no guarantee these can be reimbursed. For questions or further information, please contact: [iai\\_seasonalpredictions\\_2010ti@dir.iai.int](mailto:iai_seasonalpredictions_2010ti@dir.iai.int)

### The Vespucci Summer Institute 2010

Source: <http://vespucci.org/>

The Vespucci Initiative for the Advancement of Geographic Information Science announces the 8th Annual Summer Institute on Geographic Information Science. Acceptance into the Summer Institute is based on merit, and on space limitations. The registration period has started:

- Florence (Firenze), Italy: 14 to 18 June 2010: "[Interfacing social and environmental modeling](#)"
- Las Navas, Spain: 4 to 10 July 2010: "[20th Anniversary Meeting on Cognitive and Linguistic Aspects of Geographic Space](#)" (Full papers due: **March 30, 2010**)

Contact e-mail for questions on registration: [info@geospatialpartners.com](mailto:info@geospatialpartners.com)





## Global Spatial Data Infrastructure Latin America and the Caribbean Newsletter

### UN-HABITAT Urban Youth Fund opens second call for applications

Source: Michael Raghieb

UN-HABITAT Urban Youth Fund will this year provide one million dollars to projects led by young people aged 15-32 years who are piloting innovative approaches to employment, good governance, and shelter and secure tenure. Small development initiatives are eligible for grants of up to US\$5,000, while larger projects may be able to secure up to US\$25,000. The deadline for applications is **April 15th 2010**. More details are now available at [www.unhabitat.org/youthfund](http://www.unhabitat.org/youthfund) or at the fund's Facebook page [www.tinyurl.com/urbanyouthfund](http://www.tinyurl.com/urbanyouthfund). All information in this website is also available in Spanish and French.



UN-HABITAT  
FOR A BETTER URBAN FUTURE

[\(Back to Top\)](#)

### Employment Opportunities

#### GIS Software Analyst/Developer

Source: Yassine Lassoued

Due to continued success in EU FP7 (European Union Seventh Framework) research project funding, the coastal and Marine Research Centre –University



Coastal & Marine Resources Centre

*Ionad Acmhainní Cósta is Mara*

College Cork– (CMRC, <http://cmrc.ucc.ie/>) is seeking to recruit an experienced Information Technology (IT) professional to become a member of its Marine Geomatics & IT team. This is an excellent opportunity for a skilled IT professional to work in the expanding area of GIS technology and its applications. The Marine Geomatics & IT team within CMRC has an internationally recognized track record in the research and development of systems and infrastructures for environmental management and decision support using Geographic Information Systems (GIS) and web-GIS standards and in providing customized solutions for data-management, visualization, integration, delivery, and geo-spatial analysis. The successful candidate is expected to contribute to one or more of the European projects mentioned above. He/she will be a highly motivated self-starter working very closely with the Marine Geomatics & IT team on the development and documentation of innovative software architectures and solutions for the management, delivery, visualization, and interoperability of marine geospatial data. The appointment will be for an initial period of two years (subject to a review after 12 months). Closing date for applications is **22nd March 2010**. Completed application forms and CV's may be submitted either electronically or by mail. To apply please complete the application form which can be downloaded at: [http://cmrc.ucc.ie/jobs/geomatics/JobApplicationForm\\_2010.doc](http://cmrc.ucc.ie/jobs/geomatics/JobApplicationForm_2010.doc), and return together with your curriculum vitae to Gráinne Lynch ([grainne.lynch@ucc.ie](mailto:grainne.lynch@ucc.ie)), or to the following address: Coastal & Marine Resources Centre, Naval Base, Haulbowline, Cobh, County Cork, Ireland.

#### Inter-American Development Bank - Young Professionals Program

Source: Camilo-Mateo Botero

The Inter-American Development Bank has launched a special program of practical work at headquarters in Washington and in the 28 field offices in Latin America, Caribbean, France and Japan. The program targets young professionals who have completed a Master degree or equivalent. Similarly, for college students, the Bank offers employment programs in the winter and summer periods and the diversity program. The latter is intended for people of African descent and indigenous. In most cases it requires fluency in two of the Bank's four official languages: English, Spanish, Portuguese and French. Finally, as part of its commitment to training and training of professionals, the Bank offers various scholarship programs. Application deadline is **April 1, 2010**. All information available at: [http://www.iadb.org/vacancies\\_scholarships/YPP-DYP.cfm?lang=es](http://www.iadb.org/vacancies_scholarships/YPP-DYP.cfm?lang=es)



Inter-American Development Bank

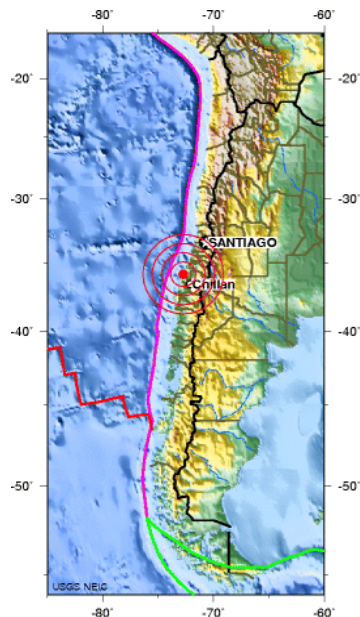
[\(Back to Top\)](#)

# Global Spatial Data Infrastructure Latin America and the Caribbean Newsletter

Other

## [Earthquake Magnitude 8.8 - Offshore Maule, Chile](#)

Source: <http://www.usgs.gov/>



OFFSHORE MAULE, CHILE  
2010 02 27 06:34:14 UTC 35.85S 72.72W Depth: 35.0 km, Magnitude: 8.8  
Earthquake Location

A magnitude 8.8 struck off the coast of Chile on Saturday February 27, 2010 at 06:34:14 UTC, exposing 12 million people to strong shaking. Please log on to Chile Earthquake maps [here](#).

## **World Bank launches new blog on IC4D**

Source: <http://www.infodev.org/en>; <http://blogs.worldbank.org/ic4d/> by way of Arturo Brun-Martínez

The World Bank launches a new [IC4D blog](#) that explores the impact of Information and Communication Technologies (ICT) on development, both directly and as an enabler for other sectors of the economy. It is a space to share ideas and experiences, and to inspire dialogue on new and innovative ways in which ICT



**Information and Communications  
for Development**

*Promoting Information and Communications for Development (IC4D)*

can create opportunities in developing countries.

## [Haiti quake far more destructive than 2004 tsunami: Study](#)

Source: <http://www.terradaily.com/>



The scale of devastation in Haiti is far worse than in Asia after the 2004 tsunami, a study said, predicting last month's quake could be the most destructive disaster in modern history. The stark assessment from the Inter-American Development Bank (IDB) comes with Port-au-Prince still lying in ruins more than one month

on, while the bodies of more than 200,000 dead pile up in mass graves outside the capital

SDI-LAC Newsletter

Vol. 7, No.3

# Global Spatial Data Infrastructure Latin America and the Caribbean Newsletter

## Articles on beaches are now posted

Source: Camilo Mateo-Botero



Two articles have been published in the Cuban indexed journal 'Science in your PC'. These items, which can be downloaded in pdf format, html or doc at <http://169.158.189.18/cienciapc/index.php/cienciapc> are the result of works presented at Caricostas 2009 in May last year; the fifth version will be held in the city of Santiago de Cuba, between 11 to 13 May 2011 ([www.cemzoc.uo.edu.cu](http://www.cemzoc.uo.edu.cu)). Articles are titled as follows: "Utility of Beach Certification Schemes for Integrated Coastal Evaluation: Evaluation of Eight Certifications in Latin America" by M.Sc. Candidate Camilo Mateo Botero; and "Selection and Proposal for Determining Environmental Quality Parameters for Colombian Caribbean Tourist Beaches" by M.Sc. Candidate Paulin Yuri Hurtado García, M.Sc. Candidate Camilo Mateo Botero and B.Sc. Esmaragdo Herrera Zambrano. Authors are part of the Research Group on Coastal Systems.

## [Sharing Latin American works from the University of Texas](http://booksearch.blogspot.com/)

Source: <http://booksearch.blogspot.com/>

The Nettie Lee Benson Latin American Collection is one of the largest Latin American collections in the world, and is renowned for the scope and breadth of its materials covering Mexico, Central America, the Caribbean island nations, South America, and the Latino presence in the United States. The project that initiated in 2007 is now completed accomplishing all digitalization with the University of Texas Libraries and the inclusion of over 500,000 unique volumes into the Google Books index. Books from this collection range from the 18th century to newly-published materials, and represent over 50 languages. While the highest concentrations of these texts are in Spanish and Portuguese, there are also books written in many indigenous languages of Central and South America. Whether you're interested in the [political journal](#) mentioned in Jorge Luis Borges's [Funes el memorioso \(Funes the Memorious\)](#), a [memoir](#) from an American veteran of the Mexican-American war, or even details on the [Archaeological Remains from Lake Chapala, Mexico](#), you and other readers around the world now have access to a wealth of information from this exceptional collection. "We've long wanted to share these treasures of Latin America with the world, and Google has helped us to do just that," said Dennis Dillon, University of Texas. We may explore this collection on [books.google.com](http://books.google.com).

## [Urban Risk Management in Latin America: Compendium of articles](#)

Source: ISDR News



This publication presents a selection of articles carried out within the framework of the Regional Platform for Disaster Risk Reduction in the Americas and the Urban Risk Thematic Platform in particular. The thirteen articles included here reflect diverse perspectives and interests surrounding disaster risk in several cities of Latin America. The authors, real actors from cities both large and small, face tangible issues of disaster risk in distinct settings. Through diverse theories, practices, lessons learned and critiques; this collection of articles provides a glimpse into the complexity of challenges being faced in reducing the risk of disasters in our urban environments. Available in Spanish only.

[\(Back to Top\)](#)



# Global Spatial Data Infrastructure Latin America and the Caribbean Newsletter

## Americas: Conferences, SDI Events

[Year 2010](#) [January](#) [February](#) [March](#) [April](#) [May](#) [June](#) [July](#) [August](#) [September](#) [October](#) [November](#) [December](#)

MARCH 2010		
<b>2</b> <b>*NEW*</b>	Vancouver BC, Canada	<a href="#">Re-Invent Your Business in Changing Times</a>
<b>3-4</b> <b>*NEW*</b>	Buenos Aires, Argentina	<a href="#">12th Architecture and Data Committee Meeting</a>
<b>3-5</b>	Denver CO, USA	<a href="#">International Lidar Mapping Forum Conference and Exhibition</a>
<b>3-5</b>	Washington DC, USA	<a href="#">International Commercial Remote Sensing Symposium</a>
<b>3-5</b> <b>*NEW*</b>	Yucatán, México	<a href="#">IV Survey International Congress</a>
<b>6-10</b>	Annapolis MD, USA	<a href="#">National States Geographic Information Council (NSGIC) Midyear Conference</a>
<b>7-13</b>	Cancún, México	<a href="#">First International Conference on Environmental Change Awareness (BIOENVIRONMENT 2010)</a>
<b>8-11</b>	Little Rock AR, USA	<a href="#">14th GIS / CAMA Technologies Conference</a>
<b>9</b> <b>*NEW*</b>	On line	<a href="#">Johns Hopkins University Online Certificate in GIS Online Information Session</a>
<b>14-19</b>	Mérida, Mexico	<a href="#">6th European Geosciences Union Alexander von Humboldt International Conference on Climate Change, Natural Hazards, and Societies</a>
<b>15-18</b> <b>*NEW*</b>	Santa Clara CA, USA	<a href="#">Cloud Connect</a>
<b>15-26</b>	Buenos Aires, Argentina	<a href="#">2010 Southwestern Hemisphere Workshop Series on Climate Change: CO<sub>2</sub>, the Biosphere and Climate</a>
<b>18-19</b>	Washington DC, USA	<a href="#">MAPublisher Training</a>
<b>21-23</b>	Palm Springs CA, USA	<a href="#">2010 ESRI Worldwide Business Partner Conference (BPC)</a>
<b>21-24</b>	Orlando, FL, USA	<a href="#">Spring World 2010</a>
<b>22-24</b>	Broomfield CO, USA	<a href="#">SRCI's Extend 2010 Geographic Business Intelligence Customer Conference</a>
<b>22-25</b>	Marbella, Chile	<a href="#">Workshop on Urban Dynamics</a>
<b>22-25</b>	Miami FL, USA	<a href="#">CARIS 2010</a>
<b>22-25</b>	Palm Springs CA, USA	<a href="#">2010 ESRI Developer Summit</a>
<b>22-26</b>	Rio de Janeiro, Brazil	<a href="#">World Urban Forum 5</a>
<b>23-25</b>	Tampa FL, USA	<a href="#">DistribuTECH 2010 Conference &amp; Exhibition</a>
<b>23-25</b>	Las Vegas NV, USA	<a href="#">CTIA Wireless 2010</a>
<b>23-25</b>	Washington DC, USA	<a href="#">FOSE - Technology for Business of Government</a>
<b>24-26</b>	Vancouver, Canada	<a href="#">Globe 2010</a>
<b>24-26</b>	Austin TX, USA	<a href="#">STI: Research Conference and User Forum 2010</a>
<b>24-26</b>	Austin TX, USA	<a href="#">STI: PopStats Research Conference</a>
<b>29-31</b>	Orlando FL, USA	<a href="#">2010 AWRA Spring Specialty Conference</a>
<b>30-31</b>	SJ Campos, SP, Brazil	<a href="#">First Workshop on Engineering and Spatial Technology</a>
<b>Mar. 30 – Apr. 1</b>	San Jose CA, USA	<a href="#">Where 2.0 Conference 2010</a>
<b>30-31</b> <b>*NEW*</b>	SJ Campos SP, Brazil	<a href="#">I Workshop on Engineering and Spatial Technology</a>
<b>31</b>	São Paulo SP, Brazil	<a href="#">Geomarketing Seminar – New Trends</a>

# Global Spatial Data Infrastructure Latin America and the Caribbean Newsletter

## APRIL 2010

1 <b>*NEW*</b>	SJ Campos SP, Brazil	<a href="#">I Workshop on Engineering and Spatial Technology</a>
<b>Mar. 30 – Apr. 1</b>	San Jose CA, USA	<a href="#">Where 2.0 Conference 2010</a>
1	SJ Campos, SP, Brazil	<a href="#">First Workshop on Engineering and Spatial Technology</a>
5-9	Orlando FL, USA	<a href="#">SPIE Defense, Security, &amp; Sensing 2010</a>
6-9 <b>*NEW*</b>	Orlando, FL USA	<a href="#">The International Multi-Conference on Complexity, Informatics and Cybernetics: IMCIC 2010</a>
6-9 <b>*NEW*</b>	Orlando, Florida USA	<a href="#">International Conference on Education, Training and Informatics: ICETI 2010</a>
6-9 <b>*NEW*</b>	Orlando, Florida USA	<a href="#">International Conference on Society and Information Technologies: ICSIT 2010</a>
6-9 <b>*NEW*</b>	Orlando FL, USA	<a href="#">4th International Conference on Knowledge Generation, Communication and Management: KGCM 2010</a>
6-9 <b>*NEW*</b>	Orlando FL, USA	<a href="#">8th International Conference on Computing, Communications and Control Technologies: CCCT 2010</a>
7-10	Kansas City MI, USA	<a href="#">ADEC 32nd Annual Conference</a>
11-14	Charleston WV, USA	<a href="#">GIS-T 2010</a>
13-15	Toronto, Ontario, Canada	<a href="#">GeoTec 2010</a>
14-15	Champaign IL, USA	<a href="#">Illinois GIS Association Spring Conference</a>
14-15 <b>*NEW*</b>	Portland OR, USA	<a href="#">Oregon-Washington URISA-GIS in Action</a>
14-16 <b>*NEW*</b>	Santa Marta, Colombia	<a href="#">2nd Hemispheric Meeting on Mechanisms and National Networks for Risk Reduction</a>
14-18	Washington DC, USA	<a href="#">Association of American Geographers 2010 Annual Meeting</a>
15-16	Victoria BC, Canada	<a href="#">ESRI Regional User Conference</a>
15-17	Curitiba, Paraná, Brazil	<a href="#">5<sup>th</sup> Brazilian Symposium on Soils Education</a>
18-21	Huntington Beach CA, USA	<a href="#">16th Annual CalGIS Conference</a>
18-22	Kansas City MO, USA	<a href="#">MAGIC 2010 Symposium</a>
19-23	San Diego CA, USA	<a href="#">BAE Systems GXP International User Conference and Professional Exchange</a>
19-22	Houston TX, USA	<a href="#">Project Economics and Decision Making Analysis in Oil and Gas</a>
20-21	Quebec, Canada	<a href="#">ESRI Regional User Conference</a>
22	Toronto ON, Canada	<a href="#">Expedition 2010: Navigate Location Intelligence</a>
22-24	Fortaleza, Brazil	<a href="#">First Brazilian Congress on Environmental Education applied to Territorial Management</a>
22-26 <b>*NEW*</b>	Río de Janeiro, Brazil	<a href="#">World Urban Forum 5</a>
25-29	Phoenix AZ, USA	<a href="#">GITA's 2010 Geospatial Infrastructure Solutions Conference</a>
25-29	Phoenix AZ, USA	<a href="#">Not Your Father's GIS Conference</a>
25-30	Huntsville AL, USA	<a href="#">SpaceOps 2010</a>
26-28	Charlotte NC, USA	<a href="#">2010 Southeast Regional User Group (SERUG) Conference</a>
26-28 <b>*NEW*</b>	Scottsdale AZ, USA	<a href="#">Field Service 2010</a>
26-30	Austin TX, USA	<a href="#">2010 NatureServe Conferences: Biodiversity without Boundaries</a>
26-30	San Diego CA, USA	<a href="#">ASPRS Annual Conference / <a href="mailto:asprs@asprs.org">asprs@asprs.org</a></a>
27-28	Sudbury ON, Canada	<a href="#">ESRI Regional User Conference</a>
29	Phoenix AZ, USA	<a href="#">Oracle Spatial User Group Meeting</a>

# Global Spatial Data Infrastructure Latin America and the Caribbean Newsletter

## MAY 2010

4-5	Santa Maria RS, Brazil	<a href="#">Geomatics Symposium</a>
10-12 <i>*NEW*</i>	Calgary, Alberta, Canada	<a href="#">GeoAlberta 2010 Conference</a>
10-13	Banff, Alberta, Canada	<a href="#">Disaster Forum 2010: Plan to Succeed</a>
10-15 <i>*NEW*</i>	Santa Cruz de la Sierra, Bolivia	<a href="#">IX International Congress of Wildlife Management (IXCIMFAUNA)</a>
11	Whitehorse YT, Canada	<a href="#">ESRI Regional User Conference</a>
12-13	Kamloops BC, Canada	<a href="#">ESRI Regional User Conference</a>
12-14	Miami FL, USA	<a href="#">Pitney Bowes Business Insight</a>
13-14	Tampa FL, USA	<a href="#">MAPublisher Training</a>
16-18	Montego Bay, Jamaica	<a href="#">2010 International Conference on Information Resources Management</a>
16-20	Aracaju SE, Brazil	<a href="#">24<sup>th</sup> Cartographic Brazilian Congress</a>
17-20	Puebla, Mexico	<a href="#">11th International Digital Government Research Conference (DGO2010)</a>
18-19	Calgary AB, Canada	<a href="#">ESRI Regional User Conference</a>
19	Bethesda MD, USA	<a href="#">NGA Tech Day</a>
20	Reston VA, USA	<a href="#">USGIF Industry Tech Day</a>
22	Montreal, Canada	<a href="#">International Day for Biological Diversity</a>
24-27	Toronto, Canada	<a href="#">American Canadian Conference for Academic Disciplines</a>
24-28 <i>*NEW*</i>	Ciudad de Piura, Peru	<a href="#">Peru Second National Congress on Sea Sciences</a>

## JUNE 2010

1	Las Vegas NV, USA	<a href="#">Consumer Telematics Show</a>
1-4	Ithaca NY, USA	<a href="#">36th Annual Conference of the International Association for Social Science Information Service and Technology (IASSIST)</a>
2-3	Chicago IL, USA	<a href="#">People Tracking and Location USA 2010</a>
3-4	Winnipeg MB, Canada	<a href="#">ESRI Regional User Conference</a>
7-9	Rosemont, IL, USA	<a href="#">Sensors Expo &amp; Conference</a>
8-11	Washington DC, USA	<a href="#">COM.Geo 2010: 1st International Conference and Exhibition on Computing for Geospatial</a>
14-17	Nashville TN, USA	<a href="#">Intergraph 2010</a>
14-18	Silver Spring MA, USA	<a href="#">OGC Technical and Planning Committee Meeting</a>
15-18	Calgary, Alberta, Canada	<a href="#">Canadian Geomatics Conference (CGC)</a> "Convergence in Geomatics - Shaping Canada's Competitive Landscape"
16-18	Calgary, Canada	<a href="#">Commission I Symposium "Image Data Acquisition - Sensors &amp; Platforms"</a> Contact: <a href="mailto:elsheimy@ucalgary.ca">elsheimy@ucalgary.ca</a>
20-24	Chicago, Illinois, USA	<a href="#">129th Annual Conference and Exposition of the American Water Works Association: Show Me the Water</a>
21-23	Boston MA, USA	<a href="#">ENZEE Universe</a>
21-23	Quebec, Canada	<a href="#">Canadian Hydrographic Conference</a>
21-25	Santo Domingo, Dominican Republic	<a href="#">International Meeting "Virtual Educa" – 2010</a>
21-25 <i>*NEW*</i>	San Francisco CA, USA	<a href="#">2010 SEMANTIC</a>
22-25	Calgary, Alberta, Canada	<a href="#">103rd Air and Waste Management Association Conference and Exhibition: Energy and the Environment</a>
Jun.28-Jul.2	Santa Fe, Argentina	<a href="#">Fifth Congress on Cartographic Science, Argentina</a> E-mail: <a href="mailto:congresocienciacartograficasfe@gmail.com">congresocienciacartograficasfe@gmail.com</a>



## Global Spatial Data Infrastructure Latin America and the Caribbean Newsletter

<b>Jun.29-Jul.2</b> <b>*NEW*</b>	Orlando FL, USA	<a href="#">2nd International Symposium on Optical Engineering and Photonic Technology: OEPT 2010</a>
<b>Jun.29-Jul.2</b> <b>*NEW*</b>	Orlando FL, USA	<a href="#">4th World Multi-Conference on Systemics, Cybernetics and Informatics: WMSCI 2010</a>

### JULY 2010

<b>3-7</b>	Edmonton Alberta, Canada	<a href="#">24th International Congress for Conservation Biology</a>
<b>8-11</b>	Monterrey CA, USA	<a href="#">2010 Society for Conservation GIS (SCGIS)</a>
<b>8-12</b> <b>*NEW*</b>	San Diego CA, USA	<a href="#">ESRI User Conference</a>
<b>8-12</b> <b>*NEW*</b>	San Diego CA, USA	<a href="#">ESRI International User Conference</a>
<b>10-13</b>	San Diego CA, USA	<a href="#">2010 ESRI Education User Conference</a>
<b>10-13</b>	San Diego CA, USA	<a href="#">2010 ESRI Survey &amp; Engineering GIS Summit</a>
<b>10-13</b>	San Diego CA, USA	<a href="#">2010 ESRI Homeland Security GIS Summit</a>
<b>11-12</b> <b>*NEW*</b>	San Diego CA, USA	<a href="#">2010 ESRI Business GIS Summit</a>
<b>11-15</b> <b>*NEW*</b>	San Diego CA, USA	<a href="#">ESRI International User Conference</a>
<b>12-16</b>	San Diego CA, USA	<a href="#">2010 ESRI International User Conference</a>
<b>12-16</b>	Houston TX, USA	<a href="#">The Fifth International Conference on Environmental Science and Technology 2010</a>
<b>15-16</b>	San Diego CA, USA	<a href="#">MAPublisher Training</a>
<b>18-21</b> <b>*NEW*</b>	Denver CO, USA	<a href="#">10th International Conference on Precision Agriculture</a>
<b>23-27</b> <b>*NEW*</b>	San Diego CA, USA	<a href="#">ESRI User Conference</a>
<b>25-30</b>	Honolulu, HI, USA	<a href="#">IGARSS'10: IEEE International Geoscience &amp; Remote Sensing Symposium</a>
<b>26-30</b> <b>*NEW*</b>	Vancouver, B.C. Canada	<a href="#">GeoWeb 2010</a> Deadline for submission of Presentations and Workshops: March 12, 2010 Contact: info@geowebconference.org
<b>26-30</b>	Los Angeles CA, USA	<a href="#">SIGGRAPH 2010</a>
<b>27-30</b>	Recife PE, Brazil	<a href="#">3<sup>rd</sup> Brazilian Symposium on Geodesic Sciences and Geoinformation Technologies - III SIMGEO</a>

### AUGUST 2010

<b>2-6</b>	Orange County CA, USA	<a href="#">Acela User Conference 2010</a>
<b>3-6</b>	Buenos Aires, Argentina	<a href="#">Scientific Committee on Antarctic Research (SCAR) Open Science Conference (OSC)</a>
<b>8-13</b>	Foz do Iguassu, Brazil	<a href="#">American Geophysical Union (AGU) Joint Assembly</a>
<b>15-18</b>	Boston MA, USA	<a href="#">2010 APWA International Public Works Congress &amp; Exposition</a>
<b>16-18</b>	Charlotte NC, USA	<a href="#">2010 URISA/NENA Addressing Conference</a>
<b>23-25</b> <b>*NEW*</b>	Indianapolis IN, USA	<a href="#">FEMA - 4th Annual HAZUS Conference</a>

### SEPTEMBER 2010

<b>9-10</b>	Philadelphia PA, USA	<a href="#">MAPublisher Training</a>
<b>12-16</b>	Minneapolis MN, USA	<a href="#">National States Geographic Information Council (NSGIC) Annual Conference</a>

# Global Spatial Data Infrastructure Latin America and the Caribbean Newsletter

12-16	Vancouver BC, Canada	<a href="#">15th International Union of Air Pollution Prevention and Environmental Protection Association's World Clean Air Congress: Achieving Environmental Sustainability in a Resource Hungry World</a>
16-17	Edmonton AB, Canada	<a href="#">ESRI Regional User Conference</a>
16-18 <b>*NEW*</b>	San José, Costa Rica	<a href="#">11<sup>th</sup> International Congress on Geomatics: Geodesy and Topography in Real Time</a>
19-24	Montreal, Canada	<a href="#">IWA World Water Congress and Exhibition</a>
22	Washington DC, USA	<a href="#">LI Geocloud 2010</a>
22-24 <b>*NEW*</b>	Merida, Venezuela	1st National Congress on Geographic Information Systems SIG (ConaSIG)" E-mail: <a href="mailto:aseciam@gmail.com">aseciam@gmail.com</a>
27-30	Jackson Hole WY, USA	<a href="#">Remote Sensing &amp; Hydrology Symposium 2010</a>
Sep.28-Oct.1	Orlando FL, USA	<a href="#">GIS-Pro 2010: URISA/48th Annual URISA Conference &amp; Exposition</a>
28-29 <b>*NEW*</b>	Plymouth MI, USA	<a href="#">PLM Road Map 2010</a>
Sep.30-Oct.1	Regina SK, Canada	<a href="#">ESRI Regional User Conference</a>

## OCTOBER 2010

3 <b>*NEW*</b>	Santiago, Chile	<a href="#">GEOSS Workshop XXXIX – Forest and Bio-energy</a>
4-8	Santiago, Chile	<a href="#">Latin American Remote Sensing Week</a>
6-7	Toronto ON, Canada	<a href="#">ESRI Regional User Conference</a>
17-20 <b>*NEW*</b>	Dearborn MI, EUA	<a href="#">2010 ESRI Electric &amp; Gas User Group Conference</a>
18-20 <b>*NEW*</b>	Denver CO, USA	<a href="#">2010 ESRI Health GIS Conference</a>
18-22	Singapore, Singapore	<a href="#">GSDI 12 World Conference 2010: Realizing Spatially Enabled Societies</a>
18-22	Orlando FL, USA	<a href="#">E-Learn 2010</a>
19-20	Ottawa, Canada	<a href="#">ESRI Regional User Conference</a>
19-21	Curitiba Paraná, Brazil	<a href="#">IX Updated Seminar on Remote Sensing and Geographic Information Systems Applied to Forestry Engineer</a>
20-21	Naperville IL, USA	<a href="#">ILGISA Fall Conference</a>
20-22	Santiago, Chile	<a href="#">IAOS/Scorus Conference on Official Statistics and the Environment: Approaches, Issues, Challenges and Linkages</a>
25-28	Nashville TN, USA	<a href="#">GEOINT Symposium 2010</a>
26-27	Fredericton NB, Canada	<a href="#">ESRI Regional User Conference</a>

## NOVEMBER 2010

2-3	Vancouver BC, Canada	<a href="#">ESRI Regional User Conference</a>
4	Oakville, Ontario, USA	<a href="#">GITA Ontario Chapter Fall Forum 2010</a>
4-5	Denver CO, USA	<a href="#">MAPublisher Training</a>
8-12	Guanajuato, Mexico	XIV International SELPER Symposium "Observation & Monitoring of the Earth Related to Climate Change" (An ISPRS Regional Conference) E-mail: <a href="mailto:silvia.casas757@gmail.com">silvia.casas757@gmail.com</a>
15-19	Orlando FL, USA	<a href="#">AutoCarto 2010</a>
16-18	Orlando FL, USA	<a href="#">Commission IV Symposium "Geodatabases &amp; Digital Mapping" / Marguerite Madden (President Commission IV) / <a href="mailto:mmadden@uga.edu">mmadden@uga.edu</a></a>
17-18	St. John's NL, Canada	<a href="#">ESRI Regional User Conference</a>
22-26 <b>*NEW*</b>	San Miguel de Tucumán, Argentina	First Latin-American Congress (IV Argentinean) on Biodiversity and Conservation 2010, Coming soon at: <a href="http://www.biodiversidad2010.com.ar/">www.biodiversidad2010.com.ar/</a> / <a href="mailto:info@biodiversidad.com.ar">info@biodiversidad.com.ar</a>
Nov.30-Dec.3	Port of Spain, Trinidad	<a href="#">URISA's 5th Caribbean GIS Conference</a>

# Global Spatial Data Infrastructure Latin America and the Caribbean Newsletter

DECEMBER 2010

Nov.30-Dec.3

Port of Spain, Trinidad

[URISA's 5th Caribbean GIS Conference](#)

[\(Back to Top\)](#)

Please mention SDI-LAC as source of information in any correspondence you may have on items in this issue

To subscribe to SDI-LAC, please do so online at:  
<http://www.gsdi.org/newslist/gsdsubscribe.asp>  
Nancy Aguirre, PAIGH, Editor [cnaguirre@ipgh.org](mailto:cnaguirre@ipgh.org)  
Global Spatial Data Infrastructure Association,  
<http://www.gsdi.org>

DISCLAIMER:  
GSDI, PAIGH and the Editor will not be held liable for any errors, mistakes, misprints or incorrect information. Copyright © 2010. All rights reserved.