

# Global Spatial Data Infrastructure

## Latin America and the Caribbean Newsletter

SDI-LAC

March

2013

Vol. 10, No.3

Spatial Data Infrastructure-Latin America and the Caribbean (SDI-LAC) is a regional, monthly, and free, electronic newsletter from the [Global Spatial Data Infrastructure Association](#) (GSDI). It focuses on aspects related with Spatial Data Infrastructure, and on GIS, remote sensing, and data management issues, related with SDI in Latin America and the Caribbean. It aims to raise awareness, provide useful information to strengthen national SDI initiatives, and support synchronization of regional efforts.



The [Pan-American Institute of Geography and History](#) (PAIGH), member organization of GSDI, and the [Permanent Committee on Geospatial Data Infrastructure for the Americas](#) (PC-IDEA), promote SDI development in the region. The newsletter is prepared by PAIGH for GSDI.

[Message from the Editor](#)

[Input to this Issue](#)

[Global and Regional SDI, News, Presentations](#)

[IGS News, Links, Publications](#)

[National SDI, News, Links, Presentations](#)

[Articles and Publications of the Month](#)

[Geospatial Research, Applications, Software, Data](#)

[Training and Funding Opportunities, Awards](#)

[Employment Opportunities](#)

[Other](#)

[Americas: Conferences, SDI Events \(Year 2013\)](#)



## Message from the Editor

This SDI-LAC issue highlights the following updates: The **Global and Regional SDI** section comprises notes on the 2013-2015 Joint Action Plan for Developing SDI of The Americas; UN-GGIM Call for Case Studies; the GEOSS Future Products Workshop; Earth Networks to provide severe weather warnings to Haiti; the OGC ILAF Corner; Landsat 8 successfully launched; and the Antarctica RS for Global Change Monitoring Workshop. The **IGS section** includes comments on IGS Membership Renewal; and the Successful acceptance to IGS publication of *120 Theses*. The **National SDI** segment informs on the Seminar-Workshop of IDE EPB in Cochabamba, Bolivia; the SDI of Los Ríos, Chile; the linkage of the Governor of Putumayo to the ICDE, Colombia; and the IPDE first GIS training in Panama. **Articles and Publications** of the month include an Interview to Santiago Borrero in *GIM International*; the "Semantic annotations in OGC standards" Best Practice Document; the Mexican Catalogue of generic terms of undersea; a publication on Climate Change Adaptation in Grenada; and the economic value of EO data. **Geospatial Research and Applications** underline the Digital Map Library in Colombia; the latest Global Map of Irrigation Areas; the recently updated ArcGIS World Imagery basemap service; and the Biodiversity and ecosystems Sustainable Development Knowledge Platform. The **Training and Funding Opportunities** section encompasses calls for international initiatives, among them the Pan-American Technical Cooperation Projects 2014; and a Workshop on Web Cartography for National

SDIs in Belgium. Finally, several **Events taking place in the Americas** are listed in the last section.

Translation of SDI-LAC Portuguese is possible thanks to undergrad students from UNESP **Mateus de Barros Manhani** and **Esrom A. Rissate Júnior**, from UFPE **Caroline Martins** and the cartographic engineers: **Alexandre Scussel**, editorial assistant MundoGEO. **Annette Pic**, MSc in Remote Sensing; **Camila Bassetto Guedes**, advisor of the Operations Department of the DECEA; **Edilce Figueiredo Burity**, Technologist of IBGE/PE Geographic Information and Statistics; **Edmilson Martinho Volpi**, Natural Resources Secretary in SP; **Eduardo Freitas**, editor of the MundoGEO portal and magazine; **Flávio Porfírio**, UGP-Dam of the ITEP; **Juan Carlos Gironda Mamani**, a consultant in Geotechnology and IT solutions for Geoinformation; **Rodrigo Quirino** Technologist of IBGE/RJ Geographic Information and Statistics; **Silvana Camboim** Professor at UFPR; **Silvane Paixão**, PhD in Land Administration and Land Information Management. Under the general coordination of Silvane Paixão and review of Eduardo Freitas.

Back issues of the newsletter are at the GSDI website: <http://www.gsdi.org/newsletters.asp>

Editor, Nancy Aguirre, Pan-American Institute of Geography and History (PAIGH), <http://www.ipgh.org/> [cnaquirre@ipgh.org](mailto:cnaquirre@ipgh.org)

[\(Back to top\)](#)

# Global Spatial Data Infrastructure Latin America and the Caribbean Newsletter

## Input to this Issue

Thanks for their contributions to this SDI-LAC Newsletter issue to:

Mabel Alvarez	President of the International Geospatial Society (IGS), Argentina
Santiago Borrero	Secretary General, Pan-American Institute of Geography and History, PAIGH, Mexico
Joan Capdevila-Subirana	Regional Service of the National Geographic Institute in Catalunya, Spain
Sebastián Díaz	Razón Cartográfica, Colombia
Kate Lance	GSDI listserv moderator, USA
Carole Martinez	Programme Coordinator, EU Outermost Regions and Overseas Countries and Territories, European Union Representative Office IUCN, Belgium
Barbara J. Ryan	The GEO Secretariat Director
Maribel Yasmina Santos	Secretary-elect AGILE Council, Association of Geographic Information Laboratories for Europe; Department of Information Systems, University of Minho, Portugal
Imma Serra	National Geographic Information Center, National Geographic Institute, Spain
Jordan W. Smith	Research Assistant Professor, North Carolina State University, USA
Diana Stuart	Director of Spatial Curriculum and Research, University of Redlands, EUA
Kevin Tansey	Reader in Remote Sensing, Department of Geography, University of Leicester, UK
Sarah Wade-Apicella	Managing Editor, PreventionWeb.net, UNISDR, Geneva, Switzerland

[\(Back to top\)](#)

## Global and Regional SDI, News, Presentations

### AfricaGIS 2013

### GSDI 14



UNECA Conference Center, Addis Ababa, Ethiopia  
November 4-8, 2013

Deadline for submission of abstracts: **15 May**, 2013 URL: <http://www.gsd.org/gsdiconf/gsd14/>

### 2013-2015 Joint Action Plan to Expedite the Development of Spatial Data Infrastructure of The Americas

Source: Santiago Borrero

During the previous year the leaders of the Pan-American Institute of Geography and History (PAIGH), the Geocentric Reference System for the Americas (in Spanish SIRGAS), the Permanent Committee on Spatial Data Infrastructure for the Americas (PC-IDEA), and the CAF/PAIGH Geospatial Network for Latin America and the Caribbean (GeoSUR), worked collectively the document known as "2013-2015 Joint Action Plan to Expedite the Development of Spatial Data Infrastructure of The Americas", which was signed and presented to the Pan American community during the 44th Directing Council of the PAIGH held in Buenos Aires on November 14-16, 2012. The document is an innovation that will have positive results for the development of spatial data infrastructures in the Americas. The final version is available digitally and in print in English, Spanish and Portuguese, and is also available on the website of PAIGH in the following links:

Documento oficial en español <http://www.ipgh.org/Iniciativas/PlanConjunto.pdf>

Official document in English <http://www.ipgh.org/Iniciativas/JointActionPlan.pdf>

Documento Oficial em Português <http://www.ipgh.org/Iniciativas/PlanodeAcao.pdf>

# Global Spatial Data Infrastructure Latin America and the Caribbean Newsletter

## UN-GGIM: Call for Case Studies

Source: Santiago Borrero



The United Nations Initiative on Global Geospatial Information Management (UN-GGIM) is requesting geospatial users, members of industry, national mapping and cadastral authorities and academic institutes to submit case studies which demonstrate the value of geoinformation. During the 2nd High Level Forum of the UN-GGIM, which was held in Qatar from 4 to 6 February, co-chair Vanessa Lawrence made it clear that while UN-GGIM has already received a number of case studies, it still needs many more. The case studies will be used to underline the importance of geospatial information to all nations, and therefore show the Member States the many ways in which geoinformation can add value to decision-making and policymaking. This supports the UN-GGIM's drive to help ensure that all nations are able to benefit from a reliable, accurate and authoritative geospatial information base. To submit a case study for consideration, please refer to the requirements (the Secretariat has

provided a template to ensure that all case studies have a consistent framework) and then send it directly to Cecille Blake, UN-GGIM Secretariat: [blake1@un.org](mailto:blake1@un.org).

Please note: Due to the purpose of the user case studies and the origin of this request, case studies are only likely to be used if they are vendor-neutral and software-neutral. More information: <http://www.gim-international.com/>

## **GEOSS Future Products Workshop**

Source: Barbara J. Ryan by way of Santiago Borrero



The Group on Earth Observations (GEO) Secretariat Director to the GEOSS (Global Earth Observation System of Systems) Future Products Workshop invites participation to this event, which will take place in Silver Spring, Maryland, USA, from 26-28 March 2013. Draft agenda and registration details are now available at: <http://www.ogcnetwork.net/node/1872> and <http://www.earthobservations.org/meetings.shtml>. This workshop provides a unique opportunity to learn how GEOSS as a platform makes all sorts of sensor and model data available in an interoperable manner. Data streaming from in-situ and remote sensing sensors (Sensor Web), and models (Model Web) offers a huge potential to generate a wide portfolio of on-demand and near real time products. To meet the GEO aim of achieving interoperability of existing and new systems that provide essential environmental observations and information, this workshop builds on prior GEO activities including: the GCI Architecture Workshop in 2008, the Standards and Interoperability Forum (SIF) Interoperability Workshops, GEO Sensor Web Workshops; and initiates similar discussions for the GEOSS Model Web. In the 2012-2015 GEO Work Plan these activities are elements of GEO Task IN-05 "GEOSS Design and Interoperability".

## Earth Networks Commits to Providing Severe Weather Warnings to Haiti

Source: Kate Lance



Earth Networks, the owner of WeatherBug and operator of the largest weather, lightning and climate observation networks, announces it is making a formal Commitment to Action to deploy \$1.5 million in state-of-the-art weather alerting infrastructure, including hardware and weather tracking technology, in Haiti in 2013. Commitments to Action are new, concrete plans with practical goals and measurable results made by members of the Clinton Global Initiative to address a global challenge. Earth Networks has designed a two-phase Commitment to Action plan to enhance and integrate regional weather information. Phase one will provide easy-to-use weather visualization and alerting tools for improved forecasting and early warning of severe weather. Phase two of the project will provide weather alerts to all Haitians as

# Global Spatial Data Infrastructure Latin America and the Caribbean Newsletter

never before possible via mobile SMS, text and other media to broaden the reach of these critical, potentially life-saving warnings. This project will involve the establishment of a public-private partnership based upon models previously used globally with organizations such as the U.S. National Weather Service and the National Institute for Space Research (in Portuguese INPE) in Brazil.

## OGC ILAF Corner

Source: Imma Serra and Joan Capdevila

Did you know that...

The adoption of the standards developed by the Open Geospatial Consortium (OGC) is established from:

- The [Specifications Program \(SP\)](#), where the [Technical Committee \(TC\)](#) and [Planning Committee \(PC\)](#) make a formal consensus process to create and revise OpenGIS Implementation Standards, following the specification development model entitled [Abstract Specification](#). This is usually accomplished by setting up a [Standards Working Group \(SWG\)](#), which will be responsible of producing guidelines established by the Abstract Specification. This may also be done by a [Domain Working Group \(DWG\)](#) in which related issues to interoperability on specific topics are addressed. The ultimate responsibility for the adoption and publication of a standard is the Planning Committee.
- The [Interoperability Program \(IP\)](#) develops a series of initiatives to accelerate acceptance of specifications. This is a program that allows defining, documenting, improving and testing OGC specifications.



The standards adopted by OGC may be found [here](#).

## OGC News

OGC has published a discussion paper on *netCDF Uncertainty Conventions*. [Link](#)

Call for Participation in the Geo4NIEM initiative to enhance geospatial capabilities for the US National Information Exchange Model Model (NIEM). [Link](#)

OGC approves Climate and Forecast (CF) extension to NetCDF Core data model standard. [Link](#)

OGC forms Moving Features Standards Working Group (SWG). [Link](#)

Conference on OGC Location Standards for Next Generation (LBS). [Link](#)

More on OGC at the Iberian and Latin-American Forum [webpage!](#)

## [Latest Landsat Successfully Launched](#)



Source: Santiago Borrero

The latest satellite in the Landsat series was launched into orbit in February, marking an important new stage in Australia's collaboration with the United States Geological Survey in relation to international satellite missions. The new satellite launched will continue the almost 40 years of continuous land observation performed by the Landsat series, including capturing images of the Australian landscape and surrounding regions. "Earth-observing satellites like this one are estimated to contribute \$3.3 billion annually to Australia's Gross Domestic Product," Minister for Resources and Energy, Martin Ferguson AM MP, said. "The data they capture supports a wide range of activities including emergency response and management of floods and fires, mineral exploration, urban planning and regional development". Geoscience Australia, the Australian Government's geoscience agency, collects, archives and publishes data from Landsat satellites to support management of Australia's often challenging landscape. "Application of the Landsat archive also extends to monitoring climate change in our region through government programs such as the National Carbon Accounting System. This program uses satellite images to measure changes in vegetation over time, which is an



## Global Spatial Data Infrastructure Latin America and the Caribbean Newsletter

important component in accounting for Australia's greenhouse gas emissions. This new satellite in the Landsat series follows Landsat 5 which was used to produce the first comprehensive maps of the Great Barrier Reef, and provided valuable insight into drought conditions, and major fire and flood disasters. Australia's partnership in this new satellite is a significant step forward in our commitment to working with the United States to deliver civilian uses of space". The new satellite will undergo approximately three months of testing following which it will be officially renamed Landsat 8. Imagery of the launch of the new satellite can be found [here](#). A video of the launch of the new satellite can be found [here](#).

### Update your DRR Organization Profile by 15 April to Share your Work at the Global Platform 2013

Source: Sarah Wade-Apicella by way of Santiago Borrero

You can update your own organization profile including your mission, disaster risk reduction (DRR) goal, and programmes in support of the Hyogo Framework for Action. Updating your profile by Monday **15 April** will ensure the inclusion of your organizational details in a USB key which will be distributed at the fourth session of the Global Platform for Disaster Risk Reduction, 19-23 May 2013 in Geneva, Switzerland.

Updating your profile is easy:

1. Visit the Organization Contacts list to find your organization:

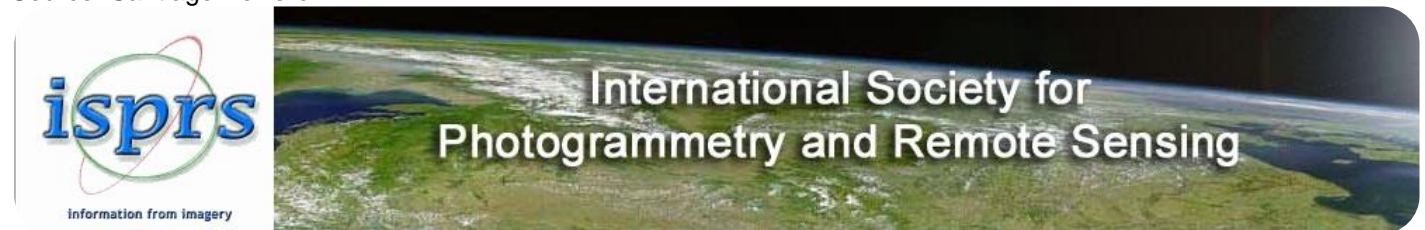
<http://www.preventionweb.net/english/professional/contacts/>

2. Click "Update organization info" in the upper right or bottom of the page

If you haven't found your organization listed, you may also submit relevant disaster risk reduction content or an organization profile to get started <http://www.preventionweb.net/submit>. You will receive periodic reminders to update your organization profile on an ongoing basis.

### Antarctica Remote Sensing for Global Change Monitoring: Call for Abstracts

Source: Santiago Borrero



The workshop will be held on April 21, 2013 in Beijing, China. Antarctica region is a crucial area for the climate change study on the whole Earth. Remote Sensing technology is one of the most important methodologies for data collection and change monitoring in this area. Modeling and application oriented contributions, investigations on the use of existing and new sensors, and experiences about data integration and cross-validation with both spaceborne and ground-based sensors (e.g. GNSS, ice penetrating radar) will be discussed in the workshop. More information at: [http://www.isprs.org/news/newsletter/2013-01/25\\_Call-for-abstracts-Workshop-Polar-RS-ISRSE.pdf](http://www.isprs.org/news/newsletter/2013-01/25_Call-for-abstracts-Workshop-Polar-RS-ISRSE.pdf). The workshop is jointly organized with the 35th International Symposium on Remote Sensing for Environment (<http://www.isrse35.org>), that will be held on April 22-26, 2013 at the Beijing International Convention Center.

### 3rd International Marine Protected Areas Congress (IMPAC3): Call for papers

Source: The IMPAC3 Program Committee by way of EU Overseas Forum

The 3rd International Marine Protected Areas Congress will be held in Marseille and Corsica, France, from October 21 to October 27, 2013. October 26 and 27 are set aside for institutional and policy discussions and not open to all participants. Please find detailed descriptions of the chosen themes, as well as practical information to help you submit your proposals at: [www.impact3.org](http://www.impact3.org). You may begin submitting abstracts from the day this website opens, March 15, 2013: connect to [www.impact3.org](http://www.impact3.org). Submissions close on **May 10**.



# Global Spatial Data Infrastructure Latin America and the Caribbean Newsletter

## The Second International Conference on e-Technologies and Networks for Development (ICeND 2013)

Source: Santiago Borrero



**A P U**  
ASIA PACIFIC UNIVERSITY  
OF TECHNOLOGY & INNOVATION



The Conference took place in Kuala Lumpur, Malaysia on March 4-6, 2013 as part of The World Congress on Computing and Information Technology (WCIT). The event will be held over three days, with presentations delivered by researchers from the international community, including presentations from keynote speakers and state-of-the-art lectures (URL: <http://sdiwc.net/conferences/2013/Malaysia2/>). The main objective of this conference is to provide a medium for professionals, engineers, academicians, scientists, and researchers from over the world to present the result of their research activities in the field of Computer Science, Engineering and Information Technology. Inquiries can be forwarded to: Noah John Ucab, Conference Manager, The Society of Digital Information and Wireless Communications (SDIWC) [ice@sdiwc.net](mailto:ice@sdiwc.net)

[\(Back to top\)](#)

## IGS News, Links, Publications



International  
Geospatial Society



### IGS Reminders – Membership Renewal

Source: News from the GSDI Association and the International Geospatial Society, Volume 3, Number 1, 2013

It is time to renew your membership in the International Geospatial Society (IGS). As a member you played a vital role in making the past year a great success.

#### *Activities and Benefits*

The International Geospatial Society (IGS) is the global society for geospatial specialists who want to affiliate with, help support, learn from and communicate with peer professionals across the world. Without the base financial support and volunteered personal time and effort of members the numerous activities in which IGS engages would not be possible. See a description of member benefits and the range of activities in which members have been engaged at <http://www.igeoss.org/BenefitsOfJoining>.

In terms of new initiatives, the organization was able to implement a program to allow geospatial specialists in developing nations to provide services in lieu of dues. Those services consist of providing or updating each year a personal professional profile in the geographic knowledge network. This effort has provided a much broader geographic distribution of representation in the organization. See the full list of members at <http://www.igeoss.org/members>.



## Global Spatial Data Infrastructure Latin America and the Caribbean Newsletter

We also expanded publication of GSDI and IGS Global News so it comes to you through email on a regular basis. The organization continues to advocate open access to geospatial conference proceedings, books, learning materials, newsletters and standards across global geospatial organizations to ensure that all are able to benefit from the resources being developed.

### *Submitting your Dues or Maintaining Free Membership*

In order to renew your membership, please go to <http://www.igeoss.org/join> and pay the dues of \$US50 by credit card (\$25 for students). Dues payment is available only through use of a credit card. In the event that you are a citizen of and live within a qualifying economically disadvantaged nation, the online membership application at <http://www.igeoss.org/join> will provide you with the option of applying for free membership in IGS. The primary obligation is to provide the URL link to your professional profile in the GIKNetwork.

*Information provided by Marilyn Gallant, GSDI Business Manager ([mgallant@gsdi.org](mailto:mgallant@gsdi.org)).*

### **Successful Acceptance to IGS Publication of 120 Theses**

The International Geospatial Society (IGS), as part of its 1st Work Plan, promoted the compilation of MSc and PhD theses related to geospatial information, covering topics like SDI, GIS, remote sensing and cartography.

The aim of this publication was to achieve objectives of the first IGS Work Plan, such as:

- Making the International Geospatial society (IGS) and the Geographic Information Knowledge Network (GIKnet) to be known through publications that are opened to public access
- Working as a network between members of IGS and outside collaborators
- Generation of publications on topics of interest, aimed at a particular target audience
- Generation of Spanish publications aimed at Spanish-speaking countries
- Contribution to scientific production dissemination

The first version of the publication *120 Theses*, was developed as a collaborative task by some members of IGS and outside collaborators, being uploaded to GIKnet on 17 December, 2012.

The publication consists of two parts, one about 63 theses in Spanish, available at <http://www.giknet.org/depot/?docid=80> and the other concerning 57 theses in English available at: <http://www.giknet.org/depot/?docid=78>

Since theses were available at GIKnet, dissemination strategies were implemented in order to share this publication with society.

As a result of the dissemination strategies of the theses, to date these have been spread among other means, through: the GSDI and IGS Newsletter, the SDI-LAC Newsletter and the Newsletter IDE Iberoamérica; in the GIKnet forum (topics of general interest in English and Spanish), Blog del Profe José (Argentina), Blog IDEE (Spain) and MundoGEO (Brazil).

Additionally, information about the theses was sent to specific groups, thematic networks, universities and other potential stakeholders.

The publication *120 Thesis*, has been downloaded from GIKnet, so far, in over two months, 860 times (589 in Spanish and 271 in English).

The number of downloads of the theses is a clear indicator that the expected objectives have been achieved and that the IGS initiative has been a contribution to a useful resource for many people.

*Mabel Alvarez, International Geospatial Society (([mablop@speedy.com.ar](mailto:mablop@speedy.com.ar))*

[\(Back to top\)](#)

# Global Spatial Data Infrastructure

## Latin America and the Caribbean Newsletter

### National SDI, News, Links, Presentations

#### BOLIVIA

##### [Scope of the Seminar-Workshop IDE EPB in Cochabamba](#)

Source: <http://geo.gob.bo/>

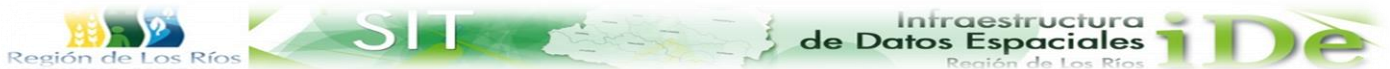
On February 25, GeoBolivia Project developed the Workshop on "Spatial Data Infrastructure of the Plurinational State of Bolivia (in Spanish IDE-EPB)" in order to show the results and progress of the IDE-EPB in the city of Cochabamba, Bolivia. Said event was held in coordination and with the support of the Universidad Mayor de San Simon (Faculty of Architecture and Habitat Sciences, and the Research and Service Centre in Remote Sensing). The seminar which lasted all day, had participation of 80 persons from different academic institutions, research institutes, the Departmental Government of Cochabamba, the Quillacollo Municipal Government, and others. In addition a practical workshop took place, as to explain the workings of the IDE-EPB and its interaction with Geographic Information Systems and other web applications. The latter activity was attended by 30 people representing the Governor of Cochabamba, Center for Aerospace Survey and GIS Applications (in Spanish CLAS), Remote Sensing Research and Service Center (in Spanish CISTEL), and students and faculty of the School of Architecture and Agronomy.



#### CHILE

##### **SDI of Los Ríos, Chile**

Source: IDERA Outreach Group



The Spatial Data Infrastructure (SDI) of the Region of "Los Rios" (<http://www.idelosrios.cl>) is now available to the community. It allows data searching, locating, viewing, downloading, and performing GIS applications, of this region of Chile. "Los Rios" SDI is part of a network of SDI nodes at local, subnational and national levels, which integrates interoperable geoservices using OGC international standards and Geographic Information Chilean standards.

#### COLOMBIA

##### [Governor of Putumayo is now Linked to the ICDE](#)

Source: <http://www.icde.org.co/>

The Government of the Department of Putumayo joined the Colombian Spatial Data Infrastructure (in Spanish ICDE) on December 3rd, 2012. This is an important step forward towards advancing the ICDE as to foster geographic information management and access in the country. This partnership is prove of interest of the Government in the consolidation of the National Geographic Information and Spatial Data Infrastructure of Colombia.



#### PANAMA

##### [The IPDE Launches First Training in Geographic Information Systems](#)

Source: <http://ignpanama.anati.gob.pa/>

From 18 to 22 February it was held the first Workshop on "Fundamentals of GIS and ArcGIS-ArcMap 10.0 functionality", organized by the Panamanian Spatial Data Infrastructure (in Spanish IPDE). This event was framed inside the IPDE's Institutional Strengthening component, in coordination with the National Authority for Government Innovation (in Spanish AIG). This seminar-workshop was held in the Panama City of Knowledge, under responsibility of Mr. Ariel Agrazal of the National Geographic Institute "Tommy Guardia" Geospatial Data Centre Department. This was a 40-hour training in the use of GIS tools, aimed at evolving and strengthening the public officials from 11 organizations technical capacity.

[\(Back to top\)](#)



Articles and Publications of the Month

**Geomatics Still Incipient in Latin America**

Interview to Santiago Borrero, Secretary General of PAIGH in *GIM International*, Issue 11, Volume 26

“Santiago Borrero has been Secretary General of the Pan-American Institute of Geography and History (PAIGH) since 2003. Here, he shares his views on the current state of geomatics –and in particular of cadastres– in Latin America, including best practices, his interest in INSPIRE and the impact of the UN-GGIM initiative, as well as his expectations for future growth.”

Excerpt from this interview:

*Can you describe the current state of geomatics in Latin America?*

Although progress is evident, with a set of multi-level initiatives contributing to its development over the last decade, reality indicates that the field of geomatics is still incipient in large sub-regions in the Americas. To stimulate the sector, there is a need for greater formalization of NSDIs, modernization of key institutions, production of standardized core datasets and geographic information transcending national borders and, particularly, the attainment of some sort of long term financial and institutional sustainability.

*Can you give some examples of the state-of-the-art work being done by Latin America cadastres?*

The words “state of the art” are perhaps an overstatement, even for those cadastres heavily involved in modernizing their processes, but I am keen to mention the case of Bogota, with its leading IDECA, the spatial data infrastructure initiative for the city, and the availability of online cadastral certificates for most cities in Colombia. Also, I have high hopes for what is happening in Central America where national mapping agencies are now part of bigger land administration units at the ministerial level, frequently with strong support and funding from the main multilateral development banks.

*PAIGH is also an observer to the UN-GGIM initiative. What do you regard as the major outcome so far? And what impact does this have on your region?*

GGIM is an interesting UN initiative in the field of global spatial data development, and it implies a step forward for the system of regional cartographic conferences and SDI permanent committees. I’m positive about it but realistic about its potential to achieve anything in the short term, in accordance with its objectives. For instance, the development of a knowledge base for geospatial information is a complex subject and GGIM should take advantage of the resources already in place such as the GSDI GIK Network or the UN-SPIDER knowledge Portal. I’m aware that the UN is by nature a highly political forum, but I was a bit surprised when the GGIM Secretariat recently proposed that its members should acknowledge GGIM as the overarching coordinator for the development and use of geospatial information at the global level and asked them to write to all entities about this UN-GGIM role. Clearly, there is indeed a role for the UN but it seems to me that GGIM, with its capable, yet small group of specialists in the field, is hardly mature enough to fulfill such a huge responsibility.

*Which specific developments in Latin America could the rest of the world learn something from?*

Well, GeoSUR, Latin America’s Geospatial Network which is a program developed by CAF and PAIGH, attracted the attention of the leaders of the Eye on Earth Summit on Sustainable Development. They are currently looking at replicating its best practices in other developing regions, particularly Africa. After all, the GeoSUR Topographic Processing Service is the first of its kind in the developing world due to its resolution and geographic coverage.

*What message would you like to share with the readers of GIM International?*

I addressed and attended INSPIRE 2012 in Istanbul. There was one session on its enlargement, basically exploring the possibilities for integrating Macedonia, Croatia and Balkan countries into its activities. I noticed so many similarities with respect to the multiple developing nations in the Americas. Since we are not going to attain dramatically different results with unchanged institutions and outdated policy frameworks, I long to see the conversion of many national mapping organizations into spatial authorities that are adapted to this century’s needs and the ICT revolution. There is a lot to do in the area of capacity building, both in terms of preparing the human capital and modernizing the institutions and the way they are managed.

[The complete interview may be found at: [http://www.gim-international.com/issues/articles/id1937-Geomatics Still Incipient in Latin America.html](http://www.gim-international.com/issues/articles/id1937-Geomatics%20Still%20Incipient%20in%20Latin%20America.html)]

# Global Spatial Data Infrastructure

## Latin America and the Caribbean Newsletter

### The OGC Approves "Semantic Annotations in OGC Standards" Best Practice Document

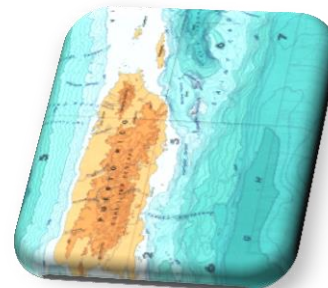
Source: OGC Press Release

The Open Geospatial Consortium (OGC®) has adopted "[Semantic annotations in OGC standards](#)" as an OGC Best Practice. OGC standards provide standard ways of locating and transporting network-resident geospatial data and ways of locating and invoking geospatial services. Without proper descriptions of these resources, however, use of the resources is limited to small user groups. To make a geospatial resource more widely discoverable, assessable and useful, resource providers must annotate the resource with descriptive metadata that can be read and understood by a broad audience. Without such metadata, people will neither be able to find the resource using search engines nor will they be able to evaluate if the discovered resource satisfies their current information need. This OGC Best Practice explains preferred methods of providing semantic annotation in OGC Web Service environments. It explains how to use the OGC Capabilities-Documents and descriptions of feature types, coverages and processes to publish, discover, access, invoke, and finally visualize spatial data. It extends existing OGC standards and applies standards from other organizations such as the W3C to OGC Standards. Visit the OGC website at <http://www.opengeospatial.org/contact>

### Catalogue of Generic Terms of Undersea

Source: <http://www.snieg.mx/>

Mapping Earth's surface located under the sea, using bathymetric contour lines, provides basic information to understand general characteristics of the seafloor. The data structure allows handling data in Geographic Information Systems-oriented software. It is essential as a tool for advancement of port and marine works, for laying of cables and marine exploration, as input into hydrographic research and in-depth surveys in scientific explorations. Two products are available in print and digital files (\*SHP and \*DXF formats): International Bathymetric Chart of the Caribbean Sea and the Gulf of Mexico (in Spanish IBCCA), and Bathymetric Chart of the Exclusive Economic Zone (EEZ), scale of 1:1.000.000. The catalog is available [here](#).



### [Climate Change Adaptation in Grenada: Water Resources, Coastal Ecosystems and Renewable Energy](#)

Source: <http://sustainabledevelopment.un.org/>



This publication is the product of an international study led by the Division for Sustainable Development (DSD) of the United Nations Department of Economic and Social Affairs (UNDESA) in cooperation with the Ministry of Environment, Foreign Trade and Export Development of Grenada. The completion of the report on Climate Change Adaptation in Grenada: Water Resources, Coastal Ecosystems and Renewable Energy is the result of an intensive effort by experts from Grenada, consultants and personnel from the United Nations who actively have participated in meetings, workshops, field trips, data collection and analysis since 2010. The study is part of a larger project being conducted by the DSD on "Integrating Climate Change into National Sustainable Development Strategies and Plans in Latin America and the Caribbean," funded from the United Nations Development Account. The assessments performed and projects proposed in this study represent an attempt to move forward with the practical implementation of climate change adaptation programmes and their integration into national plans for sustainable development. The study supports the global efforts on

defining national strategies for sustainable development and on addressing some of the main critical issues affecting Small Island Developing States (SIDS) and highlighted at the 2012 United Nations Conference on Sustainable Development (Rio+20 Conference). The documents may be downloaded [here](#).

### [The economic value of EO data](#)

Source: <http://www.earthobservations.org/>

Whether it is remotely sensed, *in-situ*, ocean-based, or surface-based; earth observation (EO) data is essential for making informed public policy decisions in many areas involving societal benefits like climate variability and change, energy management, agriculture, biodiversity, human health and epidemiology, weather forecasting and water management. The economic value of EO data is in its utility... [Read [full article](#) as published in *Geospatial World*, January 2013]

[\(Back to top\)](#)

# Global Spatial Data Infrastructure Latin America and the Caribbean Newsletter

## Geospatial Research, Applications, Software, Data

### Technical Presentation for the Digital Map Library Trial Version from the National Library of Colombia

Source: Sebastian Diaz Angel



On 20<sup>th</sup> February, a technical presentation of the Digital Map Library trial version, took place on the premises of the National Library in Bogota, Colombia and was opened to the public. During the event,

recommendations and suggestions for the trial improvement and extension were received. One focus of discussion was the tools available for georeferencing and map displaying on different devices. <http://www.bibliotecanacional.gov.co/index.php?idcategoria=43187>.

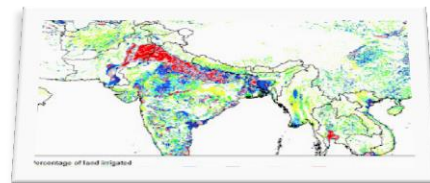
The trial version of the Digital Map Library (<http://www.bibliotecanacional.gov.co/index.php?idcategoria=43187>) is organized into three sections (for maps, with zoom, comments and descriptions is necessary to click on "Read +"):

1. Colombian Maps (Includes maps of the country and some of its regions and cities. It is organized into three sub-sections: Colonization and Viceroyalty (XVI - XVIII centuries), First Republics (1810-1885), and the Republic of Colombia (1886 onwards).
2. Maps of America (Includes maps of South America, the Caribbean, Central and North America, or some of its sub regions. Organized into two sub-sections: Colonial Period (XVI - XVIII centuries), and Republican Period (XIX - XX)
3. Other continents: <http://razoncartografica.com/2013/02/13/presentacion-tecnica-de-la-version-de-prueba-de-la-mapoteca-digital-de-la-biblioteca-nacional-de-colombia/>

### Latest Global Map of Irrigation Areas

Source: carib-gis-users list

Now, the Latest Global Map of Irrigation Areas (Ver. 4.0.1) is available as a free download. The map shows the amount of area equipped for irrigation around the turn of the 20th century in percentage of the total area on a raster with a resolution of 5 minutes. The area actually irrigated was smaller, but is unknown for most countries. A special note has to be made for Australia and India where the map shows the total area actually irrigated. This is due to the fact that statistics collected in Australia and India refers to actually irrigated area as opposed to statistics with area equipped for irrigation which is collected in most other countries. An explanation of the different terminology to indicate areas under irrigation is given in the glossary. Visit below link for full details: <http://free-gis-data.blogspot.com/2012/04/latest-global-map-of-irrigation-areas.html>



### 10 Million Square Kilometres of High-resolution Aerial Views

Source: <http://www.gim-international.com/>

ESRI and DigitalGlobe recently updated the ArcGIS World Imagery basemap service with more than 10 million square kilometres of high-resolution aerial views. The World Imagery Map is a free map service for ArcGIS users that contains quality contributions from ESRI partners and the global GIS community. The World Imagery Map is one of several useful basemap services freely accessible through ArcGIS Online. The new update includes 30cm imagery for the continental United States down to 1:1,000 scale, and 60cm imagery for large parts of Western Europe down to 1:2,000 scale. Throughout 2013, Esri and DigitalGlobe will grow the map with more than 100 million square kilometres of updated high-quality imagery, making it one of the most detailed free basemap services available. To access the World Imagery Map, go to the basemap gallery in the ArcGIS application and click on Imagery or Imagery with Labels.



# Global Spatial Data Infrastructure Latin America and the Caribbean Newsletter

## [Biodiversity and Ecosystems: Sustainable Development Knowledge Platform](#)

Source: <http://sustainabledevelopment.un.org/>



Conservation of biological diversity is the subject of Chapter 15 of Agenda 21, which was adopted by the United Nations Conference on Environment and Development, in 1992, in Rio de Janeiro. At the same Conference, the United Nations Convention on Biological Diversity (CBD), which has subsequently entered into force, was opened for signature. In 2002, the World Summit on Sustainable Development, in Johannesburg, addressed biological diversity in Chapter IV, paragraph 44, of the Johannesburg Plan of Implementation. The Johannesburg Summit also endorsed the target to achieve, by 2010, a significant reduction of the current rate of biodiversity loss at global, regional and national levels as a contribution to poverty alleviation and to the benefit of all life on earth, which had some months earlier been adopted by the sixth meeting of the CBD Conference of Parties (COP). Biodiversity has also been discussed by the Commission on Sustainable Development on several occasions and is one of the themes for discussion in the 2012/2013 two-year cycle. The Millennium Ecosystem Assessment released in March 2005 concludes that there has been a substantial and largely irreversible loss in the diversity of life on earth due to human action. Among the outstanding problems are the dire state of many of the world's fish stocks, the vulnerability of the 2 billion people living in dry regions to the loss of ecosystem services and the growing threat to ecosystems from climate change and nutrient pollution.

## [Biodiversity Helps Protect Nature Against Human Impacts](#)

Source: <http://www.terradyaily.com/>

Unlike other scientists usually relying on short-term, artificial study plots, the researchers studied long-standing pasture grasslands on southern Vancouver Island for 10 years. The 10-hectare site owned by the Nature Conservancy of Canada consists of oak savannah where fires have been suppressed for about 150 years. "You don't know what you've got 'til it's collapsed." That's how University of Guelph integrative biologists might recast a line from an iconic folk tune for their new research paper warning about the perils of ecosystem breakdown. Their research, published as the cover story in *Nature*, suggests farmers and resource managers should not rely on seemingly stable but vulnerable single-crop monocultures. Instead they should encourage more kinds of plants in fields and woods as a buffer against sudden ecosystem disturbance. Based on a 10-year study, their paper also lends scientific weight to esthetic and moral arguments for maintaining species biodiversity. The study was written by Profs. Andrew MacDougall and Kevin McCann, graduate student Gabriel Gellner and Roy Turkington, a botany professor and member of the Biodiversity Research Centre at the University of British Columbia. Their research confirms that having lots of species in an area helps ecosystems avoid irreversible collapse after human disturbances such as climate change or pest invasion.



[\(Back to top\)](#)

## Training and Funding Opportunities, Awards

### [Call for Pan-American Technical Cooperation Projects - 2014](#)



Source: <http://www.ipgh.org/>

The General Secretariat and the Commissions of the Pan-American Institute of Geography and History (PAIGH) call for the submission of applications for the Pan-American Technical Cooperation Projects 2014. Deadline for receipt of applications at the General Secretariat of the PAIGH is Tuesday **April 30**, 2013. These projects must be directly linked to the implementation of the "Pan American Agenda 2010-2020" and will be submitted for consideration to the 79th Meeting of Authorities, to be held in June 2013. The PAIGH

# Global Spatial Data Infrastructure Latin America and the Caribbean Newsletter

Technical Assistance Program aims at implementing dedicated actions in the fields of Cartography, Geography, History and Geophysics as to contribute to regional integration and sustainable development in specific areas: climate change, territorial ordering, and natural disasters. Applications will only be considered for projects submitted exclusively to the General Secretariat of PAIGH that meet all requirements of the Pan-American Request for Technical Cooperation Projects 2014. Therefore, proposals that are incomplete, untimely, or submitted after 24:00 hrs of Mexico City time (-6 GMT) on **30 April 2013**, will not be considered. Project application form is available at: <http://www.ipgh.org/Cooperacion-Tecnica/>

## Workshop on Web Cartography for National SDIs

Source: Maribel Yasmina Santos by way of Santiago Borrero



The workshop will take place on May 14, 2013, held in conjunction with the AGILE conference on Geographic Information Science, 14-17 May 2013, in Leuven, Belgium. You are invited to attend and/or send in an extended abstract for the Workshop "Web Cartography for National SDIs", Full information about the workshop can be found at the workshop web site: <http://kartoweb.itc.nl/webcarto13/>. The workshop will focus on the visualisation issues and especially on issues related to combination of different web services. The reason for this is that the benefits from the ongoing SDI developments cannot be fully utilized without a better understanding on how to make efficient and easy to read combinations of web services from different sources. All accepted extended abstracts and the resulting presentations will be published on the workshop site, together with a workshop report, which also will be available via EuroSDR's homepage. Furthermore, the organisers of the workshop intend to invite selected authors to join in the writing of a position paper, to be submitted to a relevant journal or conference. If you have any questions or comments, please contact the organisers/chairs: Lars Harrie, ([lars.harrie@nateko.lu.se](mailto:lars.harrie@nateko.lu.se)) and Barend Köbben ([b.j.kobben@utwente.nl](mailto:b.j.kobben@utwente.nl) / [kobben@itc.nl](mailto:kobben@itc.nl))

## New funds for Europe Overseas' BEST

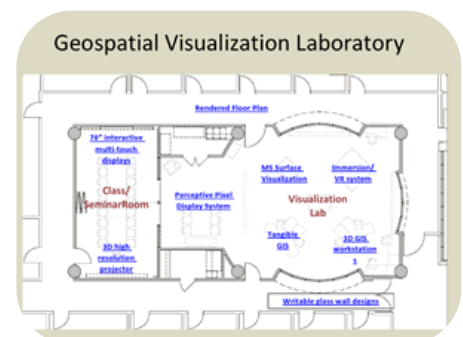
Source: Carole Martinez

The Director General of the International union for Conservation of Nature (IUCN) and the Director of the French Aid Agency (in French AFD) signed a financial agreement of 800,000 Euros last December. The grant aims at supporting the "Building partnerships and awareness of Europe overseas biodiversity and climate change for the future of an European Union Voluntary Scheme for Biodiversity and Ecosystem Services in Territories of European Overseas (BEST)" initiative, as well as IUCN's work on the establishment of a dedicate tool for Europe overseas' biodiversity. IUCN has a longstanding partnership with the AFD. This new grant will help continue and extend the current BEST facilitation project IUCN is working on, and it will also fund two additional marine biodiversity conservation projects. Detailed information [here](#).

## Doctoral Research Assistantship: Geospatial Analytics Related to the Human Health Impacts of Climate Change

Source: Jordan W. Smith

The Department of Parks, Recreation and Tourism Management (PRTM) at NC State University is seeking a qualified candidate that is committed to pursuing a Ph.D. degree and engaging in high-quality research using geospatial analytics to address the human health impacts of climate change in urban areas. Specifically, the research addresses:





## Global Spatial Data Infrastructure Latin America and the Caribbean Newsletter

- The spatial variation of extreme temperatures and human health risks in urban environments,
- Landscape and urban planning approaches to reduce climate-related human health risks, and
- Adaptive human behaviors in response to extreme summertime temperatures.

The assistantship is a 20-hour per week position for 12 months. The position includes a competitive stipend, tuition, and health insurance benefits. Funds for professional development purposes (conference presentations) are available. This position is funded for 3 years and is renewable each year based on satisfactory progress. The successful candidate will also have the opportunity to work closely with NC State's Institute for Advanced Analytics, the College of Design, and the Center for Earth Observation. For further information and application instructions, contact: Dr. Myron Floyd, Director of Graduate Programs, Department of Parks, Recreation and Tourism Management, NC State University, Raleigh, NC 27695. Email: [myron\\_floyd@ncsu.edu](mailto:myron_floyd@ncsu.edu). A .pdf of the assistantship description can be found [here](#).

### About the Laboratory

The Department's ongoing climate change and human health research is aided by NC State's digital imagery visualization laboratory, a facility dedicated to state-of-the-art visualization of geographic data. The laboratory houses a variety of tools and instruments dedicated to the representation of spatial data. Specifically, these tools and instruments include an immersive 360° head-mounted display for virtually simulating built and natural environments, several 3D GIS workstations, numerous interactive displays, and a 3D high resolution projector for presenting large, spatially complex data sets (e.g., those collected through LiDAR) in three dimensions. More information about the laboratory can be found [here](http://cnr.ncsu.edu/prtm/research/visualization_lab.php) ([http://cnr.ncsu.edu/prtm/research/visualization\\_lab.php](http://cnr.ncsu.edu/prtm/research/visualization_lab.php)).

### **9th EARSeL workshop on RS of Forest Fires**

Source: Kevin Tansey

The 9th International Workshop of the European Association of Remote Sensing Laboratories (EARSeL) Special Interest Group (SIG) on Forest Fires that will take place in the UK on 15-17 October 2013. The deadline for abstract submission has been extended to **15 April** 2013. We are especially proud to announce that we have secured an opportunity to publish a special issue on the topic of Quantifying the Environmental Impact of Forest Fires with Remote Sensing - Open Access Journal. The deadline for submission will be **31 December** 2013. More details can be found at: [http://www.mdpi.com/journal/remotesensing/special\\_issues/environmental\\_impact\\_of\\_forest\\_fires](http://www.mdpi.com/journal/remotesensing/special_issues/environmental_impact_of_forest_fires)

The workshop is organised by the University of Leicester with support from the Laboratory of Forest Management and Remote Sensing, Faculty of Forestry and Natural Environment, Aristotle University of Thessaloniki. The Leicester hosted workshop is the latest in a series of technical meetings organised by the EARSeL SIG on Forest Fires after its foundation in 1995. Previous meetings were held in Alcalá de Henares (1995), Luso (1998), Paris (2001), Ghent (2003), Zaragoza (2005), Thessaloniki (2007), Matera (2009), and Stresa (2011) and resulted in outstanding progress made in forest fire research. For more information, please visit the workshop web site: <http://www.earsel.org/SIG/FF/9th-workshop/index.php>

### **Can Crowdsourcing Save the Planet?**



Source: <http://climatecolab.org/>

Have an idea for how to address climate change? Join the crowd at the Massachusetts Institute of Technology (MIT) Climate CoLab. Submit your own proposal, weigh-in on others', or collaborate with members of the community. Work with people from all over the world to develop proposals to combat climate change. Current contests address low-carbon energy, building efficiency, geoengineering, and many other topics. A grand prize of US\$10,000 will be awarded, and writers of winning proposals will present their ideas to the media, government

officials, business executives, and scientists at MIT. Proposals are due **April 15**, 2013. More information at: [www.climatecolab.org](http://www.climatecolab.org). You may browse the contests at: <http://climatecolab.org/web/guest/plans>

[\(Back to top\)](#)

# Global Spatial Data Infrastructure Latin America and the Caribbean Newsletter

## Employment Opportunities

### Assistant Professor of Geomatics

Source: <http://www.fig.net/>



Become a part of *The Gator Nation*

The University of Florida Geomatics program is looking for someone who has a strong background in Geomatics and preferably a research interest in hydrographic surveying and/or natural resource mapping. For more details and to apply please go to the following website: <http://jobs.ufl.edu/postings/36000>. The deadline for applications is **April 1, 2013**.

### Director of Spatial Studies University of Redlands

Source: Diana Stuart



Reporting to the Vice President for Academic Affairs, the Director of Spatial Studies provides leadership, coordination, and support for spatial curriculum and research at the University of Redlands and for outreach to communities, businesses, and professional organizations involved with spatial curriculum and research. The Director also has responsibility for administration, faculty development, teaching, research, and outreach. Minimum qualifications include: Academic and professional background and a Ph.D. in Geographic Information System (GIS), geography, environmental studies, and/or other fields, and demonstrated accomplishments commensurate with an appointment at the director level. Successful candidates possess vision to guide our University's spatial efforts and promote faculty engagement in those efforts. Must possess the stamina and skills to seek and manage resources internally and externally. Collaborative skills and political savvy to work well with administrators, staff, and faculty across the University. Must have strong inter-personal and communication skills that will allow him or her to engage with external relations and university partners, keeping abreast of new opportunities for the university related to mapping, GIS, and spatial studies. Strong written and oral communication skills with the ability to tell the story of our spatial efforts in multiple ways for different audiences, both internally and externally. Must be able to competently interact with a culturally and ethnically diverse population of students, faculty, and staff. To apply please submit cover letter, resume, salary history, and the names, addresses, and telephone numbers of three (3) professional references to [apply@redlands.edu](mailto:apply@redlands.edu) or mail to: Human Resources, University of Redlands PO Box 3080 Redlands, CA 92373-0999. For more information please visit [www.redlands.edu/offices-directories/human-resources/jobs.aspx](http://www.redlands.edu/offices-directories/human-resources/jobs.aspx)

[\(Back to top\)](#)

## Other

### [About Sustainable Development in Action](http://sustainabledevelopment.un.org/)

Source: <http://sustainabledevelopment.un.org/>

The Rio+20 Conference was an action-oriented conference focusing on implementation of sustainable development. Member States, the United Nations system, and Major Groups and other stakeholders are together leading the way forward to the Future We Want. Rio +20 as well as earlier sustainable development conferences have all emphasized the importance of action-oriented voluntary initiatives to complement government-led action in realizing sustainable

# Global Spatial Data Infrastructure Latin America and the Caribbean Newsletter

development. Key voluntary initiatives for implementation of sustainable development include Voluntary Commitments, Partnerships for Sustainable Development, and Green economy policies and initiatives. All voluntary initiatives are expected to announce and achieve concrete time-bound deliverables that advance sustainable development. Rio +20 mandated the United Nations Secretariat to establish and maintain a comprehensive registry of voluntary initiatives for sustainable development whose partners have requested registration with the United Nations Secretariat. The present registry is searchable by keywords and can be filtered for Rio +20 voluntary commitments, partnerships for sustainable development as well as green economy initiatives. To register a new voluntary commitment, partnership or green economy initiatives, [kindly click here](#). Volume 1, Issue 2 of the *Sustainable Development in Action Newsletter* is now available [here](#). This newsletter aims to highlight the work carried out by Member States, United Nations system, Major Groups and other relevant stakeholders in implementing sustainable development and leading the way to the Future We Want.

## [Global Mechanism Launches Sustainable Land Management Web Platform February 2013](#)

Source: <http://sids-l.iisd.org/news/>



The UN Convention to Combat Desertification (UNCCD) Global Mechanism (GM) has launched a revamped web-based platform titled "Sustainable Land Management (SLM) – Finance" (<http://www.slmfinance.net/>). The site will support the exchange of information on funding and finance for sustainable land management among African, Caribbean and Pacific (ACP) countries, many of which are also small island developing States (SIDS). The platform, which is part of the EU-funded Scope ACP project, a South-South cooperation programme, will provide a virtual public space where information, knowledge and experiences relating to combating land degradation and desertification and implementing the UNCCD can be accessed. According to the GM, the virtual network will help support cooperation and knowledge sharing among developing countries as they address common development challenges. Features of the network, which is accessible to all interested stakeholders, include: private and public work spaces; an e-learning course on SLM integrated financing strategies; and advice on resource for project development.

## [Lungs of the Planet Reveal their True Sensitivity to Global Warming](#)

Source: <http://www.terraily.com/>

Tropical rainforests are often called the "lungs of the planet" because they generally draw in carbon dioxide and breathe out oxygen. But the amount of carbon dioxide that rainforests absorb, or produce, varies hugely with year-to-year variations in the climate. In a paper published online by the journal *Nature*, a team of climate scientists from the University of Exeter, the Met Office-Hadley Centre and the Natural Environment Research Council Centre for Ecology and Hydrology, has shown that these variations reveal how vulnerable the rainforest is to climate change. Lead author Professor Peter Cox of the University of Exeter explained: "We have been struggling for more than a decade to answer the question 'will the Amazon forest die back under climate change?' Our study indicates that the risk is low if climate change is associated with increased plant growth under elevated carbon dioxide. But if this effect declines, or climate warming occurs due to something other than a carbon dioxide increase, we expect to see a significant release of carbon from tropical ecosystems". The study reveals a new way to find out how sensitive biological systems are to changes in climate. The key was to learn how to read the year-to-year variations in the concentration of carbon dioxide in the atmosphere.



[\(Back to top\)](#)



# Global Spatial Data Infrastructure Latin America and the Caribbean Newsletter

## Americas: Conferences, SDI Events

### [Conference on Sustainable Development in Latin America and the Caribbean](#)

Source: <http://sids-l.iisd.org/>



The Economic Commission for Latin America and the Caribbean (ECLAC) will hold a Conference on Sustainable Development in Latin America and the Caribbean at Colombia's Ministry of Foreign Affairs on March 7-9, 2013. This meeting serves as the Regional Implementation Meeting (RIM). The Conference will focus on the follow-up to the development agenda beyond 2015 and the UN Conference on Sustainable Development (UNCSD, or Rio+20), with a regional perspective. It will be preceded by the Caribbean Forum on the theme of "Shaping a Sustainable Development Agenda to address the Caribbean Reality in the 21st Century," on 5-6 March. Contact: Luis Fidel Yáñez or Guillermo Acuña: [luis.yanez@cepal.org](mailto:luis.yanez@cepal.org); [guillermo.acuna@cepal.org](mailto:guillermo.acuna@cepal.org)

### [20th Colombian Congress of Geography](#)

Source: <http://www.acoge.net/>



The 20th Colombian Congress of Geography, will be held at the University of Tolima in Ibagué, Colombia, between 29 and 31 August 2013. The deadline for submission of abstracts is **April 15, 2013**. Abstracts must be no longer than 600 words. The

Universidad del Tolima and the Colombian Association of Geographers (in Spanish ACOGE) will deliver a CD with the pdf version of accepted papers and prepare a book of selected papers, with its own ISBN, to be sent by registered mail to all participants. Congressional detailed information is found [here](#). Contact: [acoge@net.co](mailto:acoge@net.co)

### [3rd Latin American Geospatial Forum LAGF](#)

Source: <http://www.lagf.org/>



The Conference will take place on September 11-12, 2013 in Rio de Janeiro, Brazil under the theme "Sustainability to Resilience: Geospatial Way". This year LAGF will be held jointly with the Geointelligence

Latin America Conference (September 12-13), and the 4<sup>th</sup> Geoprocessing Brazilian Congress (September 11-13). Through the years, Latin America Geospatial Forum has consistently attracted the world's best and brightest in the field, creating opportunities for conference attendees to learn about geospatial's most important issues through first-hand interactions with peers, luminaries and emerging and established companies. As the geospatial market continues to grow in importance and influence, this conference plays an integral role in keeping the professionals across the globe connected and educated. This year's conference is of particular importance to understand how technology and its management changed Latin American region particularly Brazil, which in a span of few years has become one of the leading economies of the world. This three day conference will provide the organizations with an opportunity to gain insight into the value proposition that this technology is bringing in efficient and effective decisions. The focus of the conference will be visionary with thought provocative deliberations and the panel session format that will allow for lively debate and discussions on the key themes. Detailed information at: <http://www.lagf.org/>. Contact: [info@lagf.org](mailto:info@lagf.org). On the other hand and framed in this event, Geospatial Media is proud to announce Geospatial Excellence Awards for Best Applications of geospatial technology in Latin American Region. The aim is to recognize, highlight and honour the best applications or uses of geospatial technologies in various walks of life and to promote these in other parts of the world and at the same time encourage stakeholders to make optimum use of these technologies. Last date to submit nominations: **15th June, 2013**

### [ICRI 28<sup>th</sup> General Meeting \(ICRI GM28\)](#)

Source: ICRI Secretariat

The International Coral Reef Initiative (ICRI) 28th General Meeting will be held in Belize City, Belize on 14-17 October 2013. The meeting will focus on the second hosting theme of community-based management, and will include a full day field trip. Basic travel information can already be found on the meeting's website at [www.icriforum.org/ICRIGM28](http://www.icriforum.org/ICRIGM28). Key dates are the following:

26 August – Registrations open with initial draft of the agenda  
16 September – Deadline for registrations, Members' Reports, comments on draft agenda

# Global Spatial Data Infrastructure

## Latin America and the Caribbean Newsletter

7 October – Final agenda posted  
 ICRI also highlights that the 67th session of the United Nations General Assembly has once again recognised the importance of its partnership by “reiterating its support” to ICRI in the resolution entitled “Oceans and

the law of the Sea” adopted on 11 December 2012 (see paragraph 200, available as document A/67/L.21 at ods.un.org). This is an important recognition of the work of ICRI and its place in the international arena.

[\(Back to top\)](#)

### YEAR 2013

Year 2013 January February [March](#) [April](#) [May](#) [June](#) [July](#) [August](#) [September](#) [October](#) [November](#) [December](#)

#### MARCH 2013

<b>3</b> <b>*NEW*</b>	San Francisco CA, USA	<a href="#">SharePoint Technology Conference</a>
<b>4-7</b>	Albuquerque NM, USA	<a href="#">GIS/CAMA Technologies Conference</a>
<b>5-7</b>	Phoenix AZ, USA	<a href="#">Alteryx Inspire 2013</a>
<b>5-9</b> <b>*NEW*</b>	Bogota, Colombia	<a href="#">Conference on Sustainable Development in Latin America and the Caribbean</a>
<b>10</b>	Panama City, Panama	<a href="#">Keynote Conference on Theme in Wastewater Treatment</a>
<b>11-14</b>	San José, Costa Rica	<a href="#">11<sup>th</sup> Congress of Water and Environmental Sanitation</a>
<b>12-13</b> <b>*NEW*</b>	Punta del Este, Uruguay	<a href="#">Punta Show 2013</a> More: <a href="http://www.grupoisos.net/">http://www.grupoisos.net/</a>
<b>12-14</b>	Washington D.C, USA	<a href="#">MAPPS Federal Programs Conference</a>
<b>13-14</b>	Redlands CA, USA	<a href="#">ESRI Pacific User Conference - CA / HI / NV</a>
<b>18-19</b> <b>*NEW*</b>	Córdoba, Argentina	<a href="#">2013 South Cone N Play</a>
<b>18-21</b> <b>*NEW*</b>	Washington DC, USA	<a href="#">Satélite 2013</a>
<b>18-22</b>	Havana, Cuba	<a href="#">8th International Congress on Geomatics</a>
<b>18-23</b> <b>*NEW*</b>	Havana, Cuba	<a href="#">International convention and international Informatics Fair 2013, 15<sup>th</sup> Edition</a>
<b>23-26</b>	Palm Springs CA, USA	<a href="#">ESRI Partner Conference</a>
<b>24-27</b>	Mendoza, Argentina	<a href="#">5<sup>th</sup> International Conference on Life Cycle Assessment - CILCA 2013 Latin America</a>
<b>24-28</b>	Baltimore MD, USA	<a href="#">ASPRS 2013 Annual Conference</a>
<b>25-28</b>	Palm Springs CA, USA	<a href="#">ESRI Developer Summit</a>
<b>26-28</b> <b>*NEW*</b>	Silver Spring MD, USA	<a href="#">GEOSS Future Products Workshop</a>

#### APRIL 2013

<b>1-5</b>	Havana, Cuba	<a href="http://www.lagf.org/">V Cuban Convention on Earth Sciences - Geosciences 2013</a> <a href="http://www.lagf.org/">http://www.lagf.org/</a>
<b>3-7</b> <b>*NEW*</b>	Catalina Island CA, USA	<a href="#">Call for applications: "Synthesizing Population, Health, and Place" - A Vespucci Institute on GI Science co-sponsored by the Association of American Geographers</a>
<b>4-5</b>	Banff, Alberta, Canada	<a href="#">The 12th International Symposium on Web and Wireless Geographical Information Systems (W2GIS 2013)</a>
<b>7-11</b>	Ciudad de Panama, Panama	<a href="#">3<sup>rd</sup> SOLBABIAA Latin American Congress: Biotechnology for Service to Society</a>
<b>8-11</b>	Washington DC, USA	<a href="#">Annual World Bank Conference on Land and Poverty</a>
<b>9</b> <b>*NEW*</b>	Pachuca, Hidalgo, México	<a href="#">ExpoSIGSA Road Show 2013</a>
<b>9-13</b>	Los Angeles CA, USA	<a href="#">2013 Association of American Geographers Annual Meeting</a>
<b>9-13</b>	Los Angeles CA, USA	<a href="#">Land Systems Science Symposium at Association of American Geographers 2013</a>
<b>13-14</b>	Vancouver, Canada	<a href="#">The 5th International Conference on Computer Engineering and Technology 2013 (ICCET 2013)</a>
<b>13-17</b>	Chicago IL, USA	<a href="#">APA National Planning Conference in Chicago</a>
<b>14-17</b>	Denver CO, USA	<a href="#">16th Annual AAAE Geographic Information Systems (GIS) Conference and Exhibition</a>

# Global Spatial Data Infrastructure

## Latin America and the Caribbean Newsletter

15-17	West Long Beach CA, USA	<a href="#">19th Annual CalGIS Conference</a>
15-17 <b>*NEW*</b>	Colorado Springs CO, USA	<a href="#">Greg Bentley to Keynote at SPAR International</a>
15-18	Colorado Springs CO, USA	<a href="#">SPAR International</a>
17-18	Vancouver, Canada	<a href="#">The 2013 AASRI Conference on Intelligent Systems and Control (ISC 2013)</a>
18-19	Córdoba-Argentina	<a href="#">International Symposium on Latin American Studies</a>
18-19	San Miguel de Tucumán, Argentina	<a href="#">4<sup>th</sup> Conference on Geographic Information Systems and Remote Sensing "TUCUMAN GIS 2013"</a>
21-23	Sao Paulo, Brazil	<a href="#">Joint Urban Remote Sensing Event (JURSE 2013)</a>
22-25	Chicago IL, USA	<a href="#">International BIO Convention</a>
22-25	Indian Wells CA, USA	<a href="#">Field Service 2013</a>
22-25	Mexico City, Mexico	<a href="#">International Congress on Sustainability IBERO</a>
23 <b>*NEW*</b>	On line	<a href="#">General Electric Geospatial Grid Contest</a>
24-26	Buenos Aires, Argentina	<a href="#">FOSS4G 2013</a>
24-26	Manizales, Colombia	<a href="#">4<sup>th</sup> Colombian Regional and Local History Symposium</a>
Apr.29-May 1	Jacksonville FL, USA	<a href="#">ESRI Southeast User Conference</a>

### MAY 2013

5-10	Quito, Ecuador	<a href="#">Latin American Forum on Noteworthy Instruments for Urban Intervention</a>
5-8	Boise ID, USA	<a href="#">AASHTO GIS-T 2013</a>
7-8	Muncie IN, USA	<a href="#">2013 Indiana GIS Conference</a>
7-9	Houston TX, USA	<a href="#">ESRI Petroleum GIS Conference</a>
7-10	Havana, Cuba	<a href="#">Vegetable Biotechnology Congress</a>
8-10	Santo Domingo, Dominican Republic	<a href="#">Call for International Seminar: Poverty, Inequality and Health in Latin America and the Caribbean: Overcoming Whirled</a>
13	San Antonio TX, USA	<a href="#">URISA Leadership Academy 2013</a>
14-16	Redlands CA, USA	<a href="#">ESRI Forestry GIS Conference</a>
14-17	Cancun, Mexico	<a href="#">Meeting of the Américas AGU</a>
14-17 <b>*NEW*</b>	Cancun, Mexico	<a href="#">Earthquakes and Tsunamis - Historical and Geological Records and Modeling at the AGU Meeting of the Americas</a>
15-17	Webinar	<a href="#">IV National Working Days on Social History and Second Meeting of the International Network of Social History</a>
17-27	San Francisco CA, USA	<a href="#">International Conference on Software Engineering - ICSE 2013</a>
20-22	Washington DC, USA	<a href="#">Location Intelligence Oracle Spatial and Graph User Conference</a>
20-23	Cincinnati OH, USA	<a href="#">World Environmental and Water Resources Congress 2013</a>
21-24	Denver CO, USA	<a href="#">2013 The National Map Users Conference and Community for Data Integration Workshop and Training</a>
22-24	Ciudad de General Roca, Argentina	<a href="#">II Iberoamerican Meeting on Policy Management and Cultural Industries "Promoting Rights through Culture"</a>
26	San Francisco CA, USA	<a href="#">GTSE 2013, SEMAT Workshop on a General Theory of Software Engineering</a>
28-30	Buenos Aires, Argentina	<a href="#">Argentinean Congress on Landscape Ecology CAEP 2013</a>
May 28-June 1	Lawrence KS, USA	<a href="#">Changing Nature: Migrations, Energies, Limits</a>

### JUNE 2013

3-5	State College PA, USA	<a href="#">2013 PA GIS Conference</a>
3-6	Las Vegas NV, USA	<a href="#">Hexagon 2013</a>
8-9 <b>*NEW*</b>	San Francisco CA, USA	<a href="#">OpenStreetMap's Annual U.S. State of the Map Conference</a>
June 10 – July 25 <b>*NEW*</b>	Atlanta GA, USA	<a href="#">Research Experiences for Undergraduates (REU) Site: Addressing Social and Environmental Disparities through Community Geography and Geographic Information Systems</a>
12-14	México City, México	<a href="#">SIGSA/ESRI Users National Meeting 2013</a>
12-15	San Jose, Costa Rica	<a href="#">Third IUFRO Latin American Congress</a>
13 <b>*NEW*</b>	Caracas, Venezuela	<a href="#">ESRI User Conference and National ENVI 2013</a>
17-20	Miami FL, USA	<a href="#">URISA's GIS in Public Health Conference</a>
18-20	Sao Paulo, Brazil	<a href="#">Mundo GEO#Connect Latin America 2013</a>

# Global Spatial Data Infrastructure

## Latin America and the Caribbean Newsletter

18-21	Victoria BC, Canada	<a href="#">CoastGIS 2013 Conference: Monitoring and Adapting to Change on the Coast</a> The 11th International Symposium for GIS and Computer Cartography for Coastal Zone Management
19	Sao Paulo, Brazil	<a href="#">Location Intelligence Brazil</a>
25-27	Toronto, Canada	<a href="#">Optech Third Imaging and Lidar Solutions Conference, ILSC 2013</a>

### JULY 2013

3-5	Tegucigalpa, Honduras	<a href="#">14<sup>th</sup> Iberoamerican Conference on Geographic Information Systems (CONFIBSIG)</a>
6-9	San Diego CA, USA	<a href="#">ESRI Education GIS Conference</a>
6-9	San Diego CA, USA	<a href="#">ESRI Survey Summit</a>
7-9	San Diego CA, USA	<a href="#">ESRI Business and Location Analytics Summit</a>
7-12	East Lansing MI, USA	<a href="#">15th International Medical Geography Symposium (IMGS 2013)</a>
8-12	San Diego CA, USA	<a href="#">ESRI International User Conference</a>
22-24	San Jose CA, USA	<a href="#">COM.Geo 2013</a>
22-26	San Diego CA, USA	<a href="#">CMSC 2013</a>
22-26	Rockport Maine, USA	<a href="#">2013 MAPPS Summer Conference</a>
23-26	Barquisimeto, Venezuela	<a href="#">5th International Congress on Historical Sciences in Venezuela (1st Call)</a>
To be determined	Lima, Peru	<a href="#">14th<sup>th</sup> Latin American Geographers Meeting (EGAL), Lima 2013. "Latin American Regional Knowledge Gathering"</a>

### AUGUST 2013

1-4 <b>*NEW*</b>	Denver CO, USA	<a href="#">NCGE 2013 National Conference on Geography Education</a>
11-15 <b>*NEW*</b>	Newfoundland and Labrador, Canada	<a href="#">Canadian Association of Geographers 2013 Annual Meeting</a> More: <a href="http://www.mun.ca/cag2013/">http://www.mun.ca/cag2013/</a>
21-24	Colorado Springs, CO USA	<a href="#">GeoGathering 2013</a>
25-29 <b>*NEW*</b>	Arlington VA, USA	<a href="#">Advances in Geospatial Technologies for Health</a>
26-27	Raleigh NC, USA	<a href="#">2<sup>nd</sup> International Conference on Hydrology and Ground Water Expo</a>
29-31 <b>*NEW*</b>	Ibague, Colombia	<a href="#">20th Colombian Congress of Geography</a>

### SEPTEMBER 2013

7-10	Cambridge MA, USA	<a href="#">International Map Industry Association (IMIA) Americas Annual Meeting and Member Showcase</a>
8-11	Daytona Beach FL, USA	<a href="#">Lucity Annual Conference and Training (ACT) 2013</a>
11-13	Rio de Janeiro, Brazil	<a href="#">Latin America Geospatial Forum 2013</a>
16-19	Providence RI, USA	<a href="#">GIS-Pro 2013: URISA's 51st Annual Conference for GIS Professionals</a>
17-20 <b>*NEW*</b>	La Plata, Argentina	<a href="#">7<sup>th</sup> Argentine Congress on Hydrogeology and 6<sup>th</sup> Hispano-Latin American Seminar on Current Topics in Groundwater Hydrology</a>
23-25	Edmonton Alberta, Canada	<a href="#">Ga3 - Geospatial - Anywhere, Anytime for Anyone</a>
24-26	Atlanta GA, USA	<a href="#">Conferencia Servicio de Campo del Este 2013</a>
25-28 <b>*NEW*</b>	Lake Tahoe CA, USA	<a href="#">AAG Pacific Coast Division Fall Regional Meeting</a>
Sep.30-Oct.4	Turrialba, Costa Rica	<a href="#">Climate-Smart Territories at the Tropic</a> . Information: <a href="mailto:conferenciawallace@catie.ac.cr">conferenciawallace@catie.ac.cr</a>

### OCTOBER 2013

3-4	Polvorines, Argentina	<a href="#">II National Congress on Geographic Information Technologies and II Days on Geographic Information Systems</a> Deadline for abstracts (300 words): <b>April 30, 2013</b> E mail: <a href="mailto:iicongresotiq2013@gmail.com">iicongresotiq2013@gmail.com</a> / <a href="mailto:infosig@unqs.edu.ar">infosig@unqs.edu.ar</a>
4-5	Entre Ríos-Concordia, Argentina	<a href="#">26<sup>th</sup> Forestry Working Days from Entre Rios</a>
9-11	Buenos Aires, Argentina	<a href="#">4<sup>th</sup> Congress on Environmental Sciences</a>
10-12 <b>*NEW*</b>	Omaha NE, USA	<a href="#">AAG Great Plains/Rocky Mountains Division Regional Meeting</a>
10-13	Oakland CA, USA	<a href="#">North American Association for Environmental Education: 41<sup>st</sup> Annual Conference</a>



# Global Spatial Data Infrastructure Latin America and the Caribbean Newsletter

14-17 <b>*NEW*</b>	Belize City, Belize	<a href="#">ICRI 28<sup>th</sup> General Meeting (ICRI GM28)</a>
16-18	Washington DC, USA	<a href="#">GIS in Transit Conference</a>
17-19 <b>*NEW*</b>	Eau Claire WI, USA	<a href="#">AAG West Lakes Division Regional Meeting</a>
18-19 <b>*NEW*</b>	Worcester MA, USA	<a href="#">New England/St. Lawrence Valley (NESTVAL) Division Regional Meeting</a>
24-26 <b>*NEW*</b>	Nacogdoches TX, USA	<a href="#">AAG Southwest Division (SWAAG) Annual Meeting</a>
25-26 <b>*NEW*</b>	Toledo OH, USA	<a href="#">AAG East Lakes Division Regional Meeting (Jointly with CAG, Ontario)</a>
27-31	Kansas City MO, USA	<a href="#">National States Geographic Information Council (NSGIC) Annual Meeting 2013</a>
Oct.30-Nov.2 <b>*NEW*</b>	Annapolis MD, USA	<a href="#">AAG Middle Atlantic Division Regional Meeting (Jointly with AAG Applied Geography Specialty Group)</a>
Oct.31-Nov.2	Tampa FL, USA	<a href="#">Fifty-fourth Annual Meeting Society for the History of Discoveries</a>

## NOVEMBER 2013

4-8	Addis Abbaba, Ethiopia.	<a href="#">AfricaGIS 2013 Conference and the GSDI 14 World Conference</a>
6-9	Havana, Cuba	<a href="#">3rd International Congress on Local Development "For Local Sustainable Development"</a>
13-16 <b>*NEW*</b>	Atlanta GA, USA	<a href="#">60th Annual North American Meetings of the Regional Science Association International</a>
21-24	Chicago IL, USA	<a href="#">38<sup>th</sup> Annual Meeting of the Social Science History Association (SSHA)</a>
24-26 <b>*NEW*</b>	Roanoke VA, USA	<a href="#">Southeast (SEDAAG) Division Regional Meeting</a>

## DECEMBER 2013

2-6	Lima, Peru	<a href="#">15th UN Industrial Development Organization (UNIDO) Conference 2013</a>
-----	------------	---

[\(Back to top\)](#)

Please mention SDI-LAC as source of information in any correspondence you may have on items on this issue

To subscribe to SDI-LAC, please do so online at:  
<http://www.gsdi.org/newslst/gsdisubscribe.asp>  
 Nancy Aguirre, PAIGH, Editor [cnaguirre@ipgh.org](mailto:cnaguirre@ipgh.org)  
 Global Spatial Data Infrastructure Association,  
<http://www.gsdi.org>

DISCLAIMER:  
 GSDI, PAIGH and the Editor will not be held liable for any errors, mistakes, misprints or incorrect information.  
 Copyright © 2013. All rights reserved.

[\(Back to top\)](#)