

Global Spatial Data Infrastructure Latin America and the Caribbean Newsletter

SDI-LAC

May 2009

Vol. 6, No. 5

Spatial Data Infrastructure-Latin America and the Caribbean (SDI-LAC) is a regional, monthly, and free, electronic newsletter from the [Global Spatial Data Infrastructure Association](#) (GSDI). It focuses on aspects related with Spatial Data Infrastructure, and on GIS, remote sensing, and data management issues, related with SDI in Latin America and the Caribbean. It aims to raise awareness, provide useful information to strengthen national SDI initiatives, and support synchronization of regional efforts.



[GSDI Definition](#)

The [Pan-American Institute of Geography and History](#) (PAIGH), member organization of GSDI, and the [Permanent Committee on Geospatial Data Infrastructure for the Americas](#) (PC-IDEA), promote SDI development in the region. The newsletter is prepared by PAIGH for GSDI.

[Message from the Editor](#)

[Input to this Issue](#)

[SDI News, Links, Papers, Presentations](#)

[Article of the Month](#)

[Geospatial Research and Applications](#)

[GIS Tools, Software, Data](#)

[Training Opportunities](#)

[Funding Opportunities, Awards, Support](#)

[Employment Opportunities](#)

[Other](#)

[Americas: Conferences, SDI Events](#)



Message from the Editor

Now, SDI-LAC Newsletter is available in Portuguese! Portuguese Translation of SDI-LAC is possible thanks to Eduardo Freitas-Oliveira, a cartographic engineer, MSc in GIS, editor of MundoGEO Web Portal and InfoGEO Magazine; and Silvana Camboim, a cartographic engineer, MSc in GIS, from GeoPlus Tecnologia e Informatica.

Due to an increasing volume of information on events, the respective section will be restricted to those events taking place in the Americas. However, for "The Rest of the World: Conferences, SDI Events", please find a link to upcoming events of global or major international interest in GSDI webpage at: <http://www.gsdi.org/events/upcnf.asp>

We kindly inform that SDI-LAC Newsletter is taking correspondent members in each country of the LAC region. Next issues will include their contributions. If you would like to become a correspondent for your country please contact Nancy Aguirre cnaguirre@ipgh.org. In principle the only requirement is that you are an active member in the Spatial Data Infrastructure activities of your country.

If you have news or information related to GIS, remote sensing, and spatial data infrastructure that you would like to highlight (e.g., projects, conferences, workshop announcements, publications, reports, websites of interest, etc.), kindly send them in. We would be happy to include them in the newsletter. We also encourage you to send to the editor your comments and suggestions for the continuous improvement of SDI-LAC Newsletter. **PLEASE share this newsletter with colleagues who may find the information useful, and ideally they will subscribe themselves.**

Back issues of the newsletter are at the GSDI website: <http://www.gsdi.org/newsletters.asp>

Editor, Nancy Aguirre, Pan-American Institute of Geography and History (PAIGH), <http://www.ipgh.org>, cnaguirre@ipgh.org

SDI-LAC Newsletter



Vol. 6, No.5

Global Spatial Data Infrastructure Latin America and the Caribbean Newsletter

Input to this Issue

Thank you for their contributions to this issue of the SDI-LAC newsletter to:

Santiago Borrero	Secretary General, Pan-American Institute of Geography and History, PAIGH, Mexico
Arturo Brun-Martinez	Architect, Colombia
Kate Lance	National Space Science and Technology Center (NSSTC), Huntsville, AL, USA
Kevan L. Main	Director, Center for Aquaculture Research & Development, Mote Marine Laboratory, FL, USA
Tuoyo Mene	Editorial Assistant, Journal of Geography and Regional Planning (JGRP)
Susan Minnemeyer	GIS Manager, World Resources Institute, Washington, DC, USA
Jeremy Mennis	Associate Professor, Department of Geography and Urban Studies, Temple University, USA
Tim Nyerges	UCGIS President, Geography, University of Washington, USA
David Stevens	Programme Coordination, UNOOSA / UN-SPIDER, Vienna, Austria
Leo Zonn	Chair and Professor, University of Texas at Austin, USA

[\(Back to Top\)](#)

SDI News, Links, Papers, Presentations

Contribute to Global Spatial Data Infrastructure Cookbook wiki

Source: GSDI News

The Global Spatial Data Infrastructure Association (GSDI) has published the *GSDI Cookbook* in a wiki environment and would like to invite contributions to this resource from a broad community of geographic data providers and users. The *GSDI Cookbook* wiki provides the necessary background information to evaluate and implement existing components of SDI. The *GSDI Cookbook* includes topics on data development, visualization, discovery, standards, legal and economic issues, community building, and case studies. In light of the rapidly evolving technological environment that SDI operates within, we would especially encourage contributions and updates to the GSDI Cookbook in the areas of service interoperability, data discovery, and data visualization. The Cookbook wiki may be accessed at: <http://gsdidocs.org/GSDIWiki/>

[Young people in the picture at the GSDI conference](http://www.rgi-nieuwsbrief.nl/)

Source: <http://www.rgi-nieuwsbrief.nl/>

Rotterdam is the 2009 European Youth Capital, and RGI will be picking up this theme at the GSDI conference (15 – 19 June). The Geo Youth Capital programme on the final conference day will welcome school and college students into the world of geo-information. Bachelor's and master's students can register for the geo-spatial and SDI masterclass, with speakers from professional practice and the academic world. The masterclass will focus on topical issues in the geo-information field. There will also be an opportunity to network with employers. In the run-up to the conference Microsoft, Geodan and VU University Amsterdam will be holding the 'Share your virtual world' contest. There will be an interactive lesson programme for school students about geo-ICT in relation to the climate, nature, safety, the economy, and crime related issues. There will also be a GPS game in Rotterdam city centre, an opportunity to visit the GEO-truck, and the geo-classroom of the future. All up-to-date information (in Dutch and English) about the GSDI conference will be posted on www.gsdi11.nl.

[SNIT: Pioneering Transparency and Access to Public Information](http://www.snit.cl/)

Source: <http://www.snit.cl/>

The National Territorial Information Coordination System of Chile (SNIT), through its technological tools is actively involved in promoting Law No. 20285 on Transparency of the Civil Service and Access Rights to State organs'

Global Spatial Data Infrastructure Latin America and the Caribbean Newsletter

Information, which came into effect on April 20. Within the Metadata Catalog (<http://www.snit.cl/catalogo/main.do>), available since 2005, anyone can learn and access territorial information of Chilean governmental institutions, as a practical way of contributing to transparency. In addition, within Geoportal of Chile (<http://www.geoportal.cl>), operational since August 2008, it is possible to browse and access various digital maps through Internet. Both tools are available to all public institutions as to meet requirements of this Transparency Law. It should be noted that, starting this year, the Metadata Catalog also allows academic institutions and the private sector to publish their products, thereby providing a deeper understanding of the country's information for the benefit of all citizens.

[SNIT begins Regional Coordination Workshops 2009 with Seminar in Valdivia](http://www.snit.cl)

Source: <http://www.snit.cl/>



With a busy workshop in the city of Valdivia, Chile, the Executive Secretariat of SNIT, initiated its work plan related to the Regional Coordination Workshops, which will mean visits of this agency throughout the country. The preliminary schedule includes visits to the regions of Arica and Parinacota, Bío-Bío, Atacama and Magallanes for May, Tarapacá, Los Lagos and Antofagasta in June, Valparaíso, O'Higgins and Maule in July, and Coquimbo and La Araucanía in August.

[Geoportal of the Military Geographic Institute of Ecuador \(IGM\)](http://www.geoportaligm.gov.ec/)

Source: <http://www.geoportaligm.gov.ec/>

The Geographic Service Geoportal seeks to integrate data, metadata, services and geographic-cartographic information produced by IGM Ecuador, through Internet; allowing all users the location, identification, selection and access to such resources through its Geoportal. In addition, diffusion of the Institute's products and services is possible by way of Map Services, which combines institutional geographic information producers' SDI-resources from different nodes, and the Geoportal, at local, national, regional and global levels. Please log on to IGM's Geoportal and browse the new geo-spatial information recently added: <http://www.geoportaligm.gov.ec/>

[IBGE releases Unpublished Study on the Information and Communication Technology Sector in the Country](http://www.ibge.gov.br/)

Fuente: <http://www.ibge.gov.br/>



In 2006 the 65,754 Brazilian companies in the Information and Communication Technology (ICT) sector had a net income of \$205.9 billion Brazilian Reales and generated \$82.1 billion Brazilian de Reales (value added and value of industrial processing); which was, that year, 8.3% of the total value produced by the industry, commerce and services sectors. Although this is a significant stake, there was a gradual loss of weight of the ICT sector, which had been 8.9% in 2003, mainly because of reduction in the rate of growth of the telecommunications' segment. To read the complete report click [here](#).

Global Spatial Data Infrastructure Latin America and the Caribbean Newsletter

[INPE Conducts CBERS-Image Users Profile Survey](#)

Source: <http://www.mundogeo.com.br/>



In 2007, the National Institute of Space Research (INPE), through the General Coordination on Earth Observation (OBT) and the Division of Image Production (DGI), conducted the first Survey of the Chinese-Brazilian Earth Resources (CBERS) Satellite image Users-Profile with effective participation of 3,471 users in Brazil and various South American countries. Based on the excellent results achieved in 2007, available at www.dgi.inpe.br/pesquisa2007, INPE invites your participation in the second CBERS Image User-Profile Survey 2009. Your participation is critical to the success, advancement, and continuation of the CBERS program. Please send your updates until **May 31**, 2009, using the electronic or printed forms at www.dgi.inpe.br/pesquisa2009/Espanhol. For further information please contact: pesquisa-cbers@dgi.inpe.br

GEOSS in the Americas

Source: The GEO Secretariat



Home | About GEO | Meetings | News Room | Documents | Contact

Building on the recent GEOSS in the Americas Symposium in Panama in September, 2008, we want to inform you of a new opportunity available through the Group on Earth Observations (GEO). GEO has issued a Call for Proposals (CFP) for organizations to propose projects that apply Earth observations in decision making. This CFP seeks to promote practical applications of Earth observations to improve decision making and to highlight specific examples in which Earth observations provide societal benefit. The CFP has a strong interest to support end users in developing countries. This CFP requests projects for the following GEO Societal Benefit Areas: Agriculture (including forests), Energy, Health (including air quality), and Water. In the first stage, project teams submit brief Concept Proposals (5 pages maximum). The Concept Proposals are due **June 4**, 2009. GEO will review these Concept Proposals and determine which projects to connect with resource-providing organizations and experts in Earth observations. The GEO Call for Proposals is available through website: http://www.earthobservations.org/geoss_call_dsp.shtml. GEO will soon hold an international teleconference to explain the Call for Proposals and answer questions. We strongly encourage you to read the CFP and submit proposals. For questions, contact: Fernando Ramos and Imraan Saloojee, secretariat@geosec.org

Invitation letter for ISPRS Working Group ICWG III/VII

Source: Secretary General of ISPRS by way of Santiago Borrero

Dear Colleagues:

Please find the [invitation letter to participate in the Working Group \(WG\) Pattern Recognition for Remote Sensing](#) of Commission III Photogrammetric Computer Vision and Image Analysis and Commission VII Thematic Processing, Modeling and Analysis of Remotely Sensed Data of the International Society for Photogrammetry and Remote Sensing (ISPRS) in the period until 2012; and an [appendix \(pdf-file\) for a short description of the motivation for the work of the WG](#). The goal of the WG is to

- coordinate the research in the development of pattern recognition methods for remote sensing applications,
- bring together researchers from photogrammetry, remote sensing, pattern recognition and machine learning,

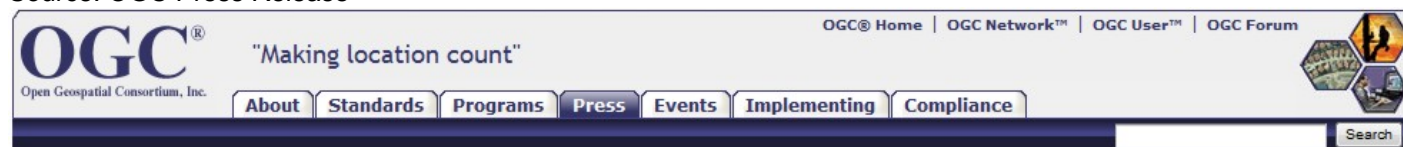
Global Spatial Data Infrastructure Latin America and the Caribbean Newsletter

- discuss the used methods and
- evaluate the methods based on common benchmarks.

Fortunately the WG is closely linked to the Technical Committee 7 on 'Remote sensing and Mapping' of the International Association for Pattern Recognition, cf. <http://www.iapr-tc7.org/>.

OGC Forms Hydrology and Meteorology Domain Working Groups

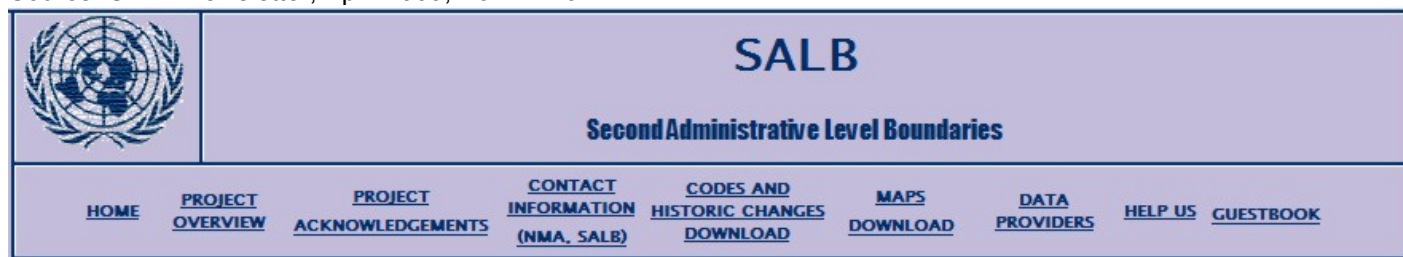
Source: OGC Press Release



The Open Geospatial Consortium, Inc. (OGC(R)) announces the formation of Domain Working Groups (DWG) for Hydrology (<http://www.opengeospatial.org/projects/groups/hydrologydwg>) and Meteorology (<http://www.opengeospatial.org/projects/groups/meteodwg>). The OGC's standards are enabling a new degree of interoperability within and between the hydrology and meteorology communities. The focus now is to leverage these DWG's to further advance interoperability solutions to benefit these disciplines, which have increasing importance globally in science, policy and decision support. The Hydrology Domain Working Group brings together experts from this community of interest to develop and promote standards, interoperability and best practices for improving the way in which water information is described and shared. This working group is to be hosted by the OGC and co-chaired by a representative from the World Meteorological Organization's (WMO), Commission for Hydrology (CHy) (http://www.wmo.int/pages/prog/hwrp/chy/chy_index.html). The purpose of the OGC Meteorology DWG is to provide an open forum for work on meteorological data interoperability, and a route to publication through OGC's standards process (Discussion paper / Best Practice / Standard, and, if appropriate, to ISO status). The goal is to develop standards that meet the specific needs of the World Meteorological Organization (http://www.wmo.int/pages/index_en.html) and benefit the world weather, water and climate data users and producers. For information about this announcement, contact: Sam Bacharach, Executive Director, Outreach and Community Adoption, Open Geospatial Consortium, sbacharach@opengeospatial.org

SALB Collaborates with other organizations

Source: SALB Newsletter, April 2009, Vol. IX No. 2



Collaboration between the UN Statistics Division and SALB

In the context of the 2010 round of population and housing censuses and to provide content for the CensusInfo software that the UN Statistics Division has developed in partnership with The United Nations Population Fund (UNFPA) and the United Nations Children's Fund (UNICEF), the Project on Second Administrative level Boundaries (SALB) is going to collaborate with the UN Statistics Division in order to encourage the National Statistics Office of selected countries to update their administrative boundaries map and put it at disposal to the international community through the SALB process.

Collaboration between Google and UNGIWG regarding SALB

As they do represent a source of validated information, Google is interested in including the maps resulting from the application of the SALB process into their services (Google Maps, Google Earth, and Google Maps for Mobile). As this

Global Spatial Data Infrastructure Latin America and the Caribbean Newsletter

would represent a commercial use of the data set, use which is not authorized by the actual SALB data policy, Google and the United Nations Geographic Information Working Group (UNGIWG) secretariat are discussing ways to collaborate together in order to have SALB facilitating the discussion with the owners of the original maps regarding this use. National Mapping Agencies who already validated the maps for their country in the context of the SALB project and would like to also be part of this discussion are invited to contact the SALB project at: SALB@un.org

[GeoConnexion Geo: International, Burning Issue](http://www.geoconnexion.com/)

Source: <http://www.geoconnexion.com/>

How valuable are our efforts on SDIs if we don't actively address the human issues? Think about all the government regulations, technical implementation plans, internal processes and procedures, data sharing networks and so on. These are arguably meaningless if there is no buy-in or understanding from the people who must deliver against them. During the 1Spatial Conference 2008 where there was a large number of presentations on a wide range of important industry topics ranging from data quality, data integration and data maintenance to open source and INSPIRE. But there were very few presentations that focused on the human aspects of our business. There was one such presentation made by Tyler Mitchell, Executive Director from the OSGeo. This made me consider how much as an industry do we communicate about the importance of people in all our industry musings? Now that the INSPIRE transposition phase is upon us and organisations are working away at legal compliance and impact assessments, are they taking the human aspect into account? In the previous column Roger (Longhorn) referred to the many components of the SDI, human factors must surely be a significant component. [Article by Steven Ramage for the *Magazine Geo: International GeoConnexion*; the complete article may be found at: http://www.geoconnexion.com/burning_issue_int.php]

Handbook on Geospatial Infrastructure in Support of Census Activities

Source: Kate Lance



UN Home | Department of Economic and Social Affairs | Economic and Social Development Home | About us | Contact us | Site Map

United Nations Statistics Division

Home | Statistical Databases | Publications | Methods & Classifications | Meetings & Events | Technical Newsletters | [Search] Go

http://unstats.un.org/unsd/demographic/sources/census/2010_PHC/Publications/Series_F103_more.htm

http://unstats.un.org/unsd/demographic/standmeth/handbooks/Series_F103en.pdf (5 MB)

The recently published *Handbook on Geospatial Infrastructure in Support of Census Activities* takes into account technological developments in the geographic information area. An official copy of the Handbook now is available on-line and set to be published in print form soon. Technological developments in the geographic information area have been reflected in the recently adopted United Nations Principles and Recommendations for Population and Housing Censuses, Revision 2, and puts into the hands of census planners and related personnel this technical guide on the contemporary methods, tools, and best practices that can support census mapping operations more efficiently.

[Source: SERVIR-Africa community news,

http://www.servir.net/africa/index.php?option=com_mamblog&Itemid=54&task=show&action=view&id=396&Itemid=54]

[The GMES Land Service: A Building Block](http://www.geoconnexion.com/)

Source: <http://www.geoconnexion.com/>

Geospatial applications have received less attention so far in research dominated European Space initiatives, and Europe lost ground in the competition with America and emerging nations as a result. The EU decision in favor of GALILEO and GMES offers a chance to remedy this situation. Arrival of GMES (Global Monitoring for Environment and Security) is timely, as an important contributor to the European answer for the challenges ahead. Until now "European"

Global Spatial Data Infrastructure Latin America and the Caribbean Newsletter

GI comes from member countries, where it is produced on national, regional or local level. European institutions such as Eurostat or the European Environment Agency (EEA) have compiled this information for their own purposes as well as possible - and will try to do better through INSPIRE, the pan-European spatial data infrastructure initiative. What is the added value of GMES over INSPIRE and why has it to be done by Europe?

- INSPIRE is a legal framework for (horizontal) geodata exchange, whereas GMES is investment into (vertical) integration of geodata of all levels, towards useful services.
- The larger the mapped area, the greater the economy of scale when using satellites.
- By joining capabilities, we can afford more sustained and robust services, reducing downstream costs and efforts to access data sources.
- Products are compatible across borders.

Comparing European GI with transportation infrastructures, INSPIRE might represent harmonised traffic rules while GMES resembles border-crossing highways.

User statistics from preparatory projects and analysis of economic potential convinced decision makers that a Land Service must be among key services (Land information layer - of interpreted data in land-use/land-cover classes, preferably automatically derived and compatible with existing systems). The Future: Land will be monitored by a fleet of "Sentinel-2" high resolution optical satellites complemented by radar observations and very high resolution images from satellites of member states. This is good news also for INSPIRE, where land-cover is one of four priority themes in Annex II of the Directive, for which the data specification procedures begin in 2009. Efforts will certainly benefit from investigations into compatible data models [Excerpts from the Article by Wolfgang Steinborn, who is with the German Aerospace Centre in charge of Earth Observation Networking, and in the last four years worked for the European Commission where he was responsible for development of the GMES Land Monitoring Service].

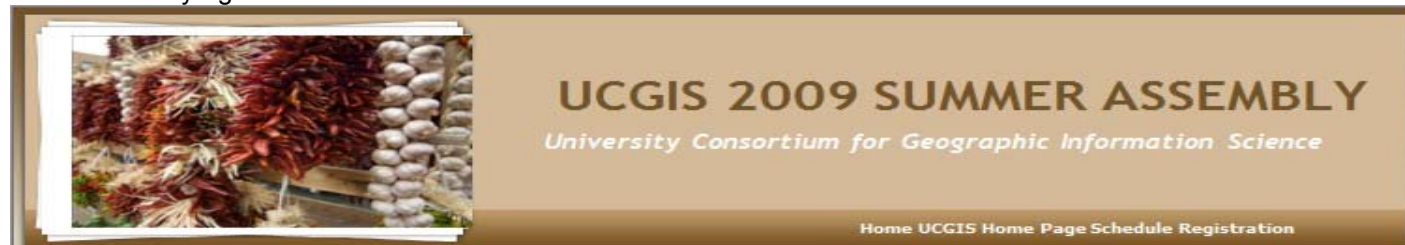
GIS and the GeoWeb

Source: SIG Adelante - ESRI Bulletin, April 2009, (by Jack Dangermond)

While the first 10 years of Web-based mapping have been very important, the next five will be revolutionary as we move from simple mapping and geospatial visualization to full geoservices on the Web (sometimes referred to as the GeoWeb). For the GIS industry, the GeoWeb allows extensive sharing of maps and data and opens up access to GIS applications to everyone. This, together with the growing availability of georeferenced content and the ability to easily search, discover, and mash up these services, will enable a whole new pattern and architecture for GIS. This pattern emphasizes open and interoperable services that can be used to support a broad array of geographically related applications.

UCGIS Summer Assembly, June 22-23, Complex Systems Science and CI

Source: Tim Nyerges



The banner features a photograph of a large, textured, reddish-brown object, possibly a piece of coral or a biological specimen, on the left. To the right, the text reads: "UCGIS 2009 SUMMER ASSEMBLY" in large, bold, brown letters, followed by "University Consortium for Geographic Information Science" in smaller, italicized brown letters. At the bottom right, there are links: "Home UCGIS Home Page Schedule Registration".

Information about the 2009 UCGIS Summer Assembly is now available at <http://www.ucgis.org/summer2009>. Hotel reservation, assembly registration, and program schedule links are all on the summer assembly page. The theme this

Global Spatial Data Infrastructure Latin America and the Caribbean Newsletter

year is Complex Systems Science with a continuing supporting theme of Cyberinfrastructure (CI). The program schedule put together by Dawn Wright, Research Chair, and Steve Prager, Education Chair, is outstanding <http://www.ucgis.org/summer2009/schedule.htm>. Complex Systems Science and Cyberinfrastructure are both emerging areas of great interest in geographic information science, with related ties to sustainability science, land use change, economic stability, and ecosystem resilience all with an eye toward how to manage associated data and maps, and how to turn them into information for decision-making.

ISRSE-33 side event: Space-based Information for Reducing Loss From Disasters

Source: David Stevens

We would like to inform you about a side-event we are organizing jointly with GEO and DLR-ZKI. We would welcome your participation, should you be attending ISRSE-33. The room size might not allow more than 40 participants, so we would encourage early expressions of interest as possible. More information on ISRSE can be found at <http://isrse-33.jrc.ec.europa.eu/>. Space-based information for reducing loss from disasters Side-Event at ISRSE, Stresa, Italy Organized by GEO, UNOOSA/UN-SPIDER and DLR-ZKI, 5 May 2009.

A structured approach and a formal network is needed to efficiently collect, synthesize and integrate observations and derived maps from a variety of sources and providers and to make it available to communities in high-risk areas, civil-protection agencies, decision makers, rescue teams, and the wider public at the global, regional and local levels. The Disaster Management Clearinghouse aims to become a source of information for disaster management providing integrated and interoperable observations, derived maps for: Vulnerability/Risk assessment; Crisis Management; Related Forecasts (i.e. weather, population migration, fire risk etc.). Both initiatives, The Disaster Management Clearinghouse and the UN-SPIDER Knowledge Portal, will be further discussed at this inter-agency side-event. Steps for implementation and challenges will also be discussed. Please contact Veronica Grasso (GEO at vgrasso@geosec.org) and Lorant Czarán (UNOOSA/UN-SPIDER at lorant.Czarán@unoosa.org) to indicate your interest in attending.

Introducing 'Journal of Geography and Regional Planning (JGRP)'

Source: Tuoyo Mene

The *Journal of Geography and Regional Planning* (JGRP) publishes high-quality solicited and unsolicited articles, in English, in all areas of Journal. All articles published in JGRP will be peer-reviewed. The following types of papers are considered for publication: 1) Original articles in basic and applied research; and 2) Critical reviews, surveys, opinions, commentaries and essays. One key request of researchers across the world is unrestricted access to research publications. JGRP is fully committed Open Access Initiative by providing free access to all articles (both abstract and full PDF text) as soon as they are published. We ask you to support this initiative by publishing your papers in this journal (<http://www.academicjournals.org/JGRP/index.htm>).

[\(Back to Top\)](#)

Articles of the Month

On the International Federation of Surveyors (FIG) web it is published each month a paper called the Article of the Month. This is a high-level paper focusing on interesting topics to all surveyors. It can be picked up from an FIG conference or another event. The Article of the Month in April 2009 is written by Ms. Silke Boos and Prof. Hartmut Müller from Germany. Their paper "SDI Developments in the World's Currently Existing Mega Cities" has been prepared as part of FIG Commission 3 WG 3.2 (Spatial Data Infrastructure) project. Interim reports of the project have been presented at the Commission 3 Workshop "Spatial Information for Sustainable Management of Urban Areas" in Mainz, Germany, 2-4 February 2009 and will be presented at the FIG Working Week in Eilat, Israel, 3-8 May 2009. Final report will be presented at the FIG Congress in Sydney, Australia in April 2010 [Source: FIG e-Newsletter April 2009].

Global Spatial Data Infrastructure Latin America and the Caribbean Newsletter

SDI Developments in the World's Currently Existing Mega Cities

Summary by the authors:

One objective of FIG Commission 3 focuses on promoting the use of Spatial Infrastructure Management (SIM)-tools at different administrative levels for decision makers and citizens to support the goals of participatory democracy. In this context FIG Commission 3 has set up the Working Group WG3.2 Spatial Data Infrastructures in Mega cities, which aims at identifying relevant spatial tools to support development and use of Spatial Data Infrastructure (SDI) by city authorities in the world's largest cities. The strategy of the work program emphasizes key problems of mega cities by reviewing SDI developments in existing mega cities, documenting case studies, including lessons learned about solutions for problems and should finally lead to a toolkit for use of best practices in SDI for managing mega cities. To complement the results of direct correspondence with administrations of mega cities one important part of this project concentrates on a background research of existing sources about overall use of SDI in mega cities. The objective of this paper is to discuss the results of an internet search concerning the use of Spatial Information Technology in the world's currently existing mega cities. The search starts from a nationwide view on the execution and the progression status of SDI's in the home countries of mega cities and zooms in to the specific aspects of spatial data management in the metropolitan areas of special interest. As a result we come to the conclusion, that current SDI development in mega cities covers the whole range from first stage conceptual ideas up to an almost complete operational SDI availability [Read complete paper at: www.fig.net/pub/monthly_articles/april_2009/april_2009_boos_mueller.html].

[\(Back to Top\)](#)

Geospatial Research and Applications

Conserving Bolivia's Critical Resources

Source: SID Adelante - ESRI Bulletin, April 2009

GIS Helps Gauge Land Change Effects on the Nation's Endemic Biodiversity. Due in part to a tremendous amount of economic growth in recent decades, the Bolivian lowlands saw forest loss of almost 3 million hectares between the years of 1992 and 2004, with almost half of this loss coming between 2001 and 2004 alone. This land change is expected to be the major contributor to biodiversity loss (even more important than climate change) and contributes to habitat degradation, fragmentation, and destruction. Indeed, the rate of deforestation is second only to that of Brazil. Clark Labs (an ESRI Business Partner located in Worcester, Massachusetts, and based within the Graduate School of Geography at Clark University) partnered with Conservation International over several years to develop a land-change modeling software environment to analyze land-cover change and assess the potential impacts of these scenarios on biodiversity. The result of this collaboration was the development of the Land Change Modeler (LCM), implemented within Clark's IDRISI GIS and image processing software and recently as an extension for ArcGIS software. The complete article may be found at: <http://www.esri.com/news/arcnews/spring08articles/conserving-bolivias.html>

[Possible Forecast for Continued Antarctica Glacier Loss and Sea-Level Rise Due to Climate Change](#)

Source: <http://www.usgs.gov/>



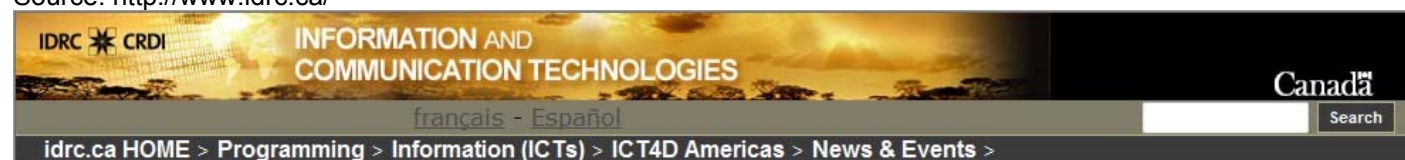
Antarctica's glaciers are melting more rapidly than previously known because of climate change, according to a new U.S. Geological Survey report prepared in close collaboration with the British Antarctic Survey. The USGS study documents for the first time that one ice shelf has completely disappeared and another has lost a chunk three times the size of Rhode Island. This research is part of a larger ongoing project that is for the first time studying the entire

Global Spatial Data Infrastructure Latin America and the Caribbean Newsletter

Antarctic coastline. Using historical and recent satellite imagery, aerial photography and other data, as well as the newest mapping techniques, the USGS study released maps of recent glacier retreat along Antarctica's Larsen and Wordie Ice Shelves. The research in Antarctica is a collaborative effort of the USGS and the British Antarctic Survey, with the assistance of the Scott Polar Research Institute and Germany's Bundesamt für Kartographie und Geodäsie. The report, "[Coastal-Change and Glaciological Map of the Larsen Ice Shelf Area, Antarctica: 1940-2005](#)" and its accompanying map, is available online. The other completed reports in the [Coastal Change and Glaciological Maps of Antarctica series](#) can also be viewed online.

[Peru and Costa Rica launch their national education portals](#)

Source: <http://www.idrc.ca/>



The [Latin American Education Portals Network](#) (RELPE) has been supported by the International Development Research Centre (IDRC) since its creation in 2004, when it emerged from an agreement established by 16 Latin American Education Ministers. After a remarkable evolution, today RELPE has more than 20 member countries of the region and recently announced the launching of the education portals of [Costa Rica](#) and [Peru](#), as well as the incorporation of a new member, the Association of Ibero-American Educational and Cultural Television (ATEI). RELPE is a network of education portals that works as a regional repository and circulation system in constant expansion and renewal. Each national portal is public, autonomous, free and designed by the Education Ministry of the respective country. Each country develops its own portal according to its education program and national interests, and learns from the experience of the other partners. The project significantly increased the offer of content and promoted the generation of knowledge networks.

[Using GIS to address disparities in access to family planning services and commodities in Latin America and the Caribbean \(December 2008\)](#)

Source: Kate Lance

This paper demonstrates a methodology that Latin America and the Caribbean (LAC) ministries of health can use to geographically identify and target scarce resources to improve access to family planning. Guatemala was chosen as a case study for implementing the methodology, in large part because of the disparities that exist between its different subpopulations. The results highlight the potential for applying this methodology in other countries in the LAC region.

[Spatial Decision Support \(SDS\) and the SDS Knowledge Portal](#)

Source: Arturo Brun

The SDS Knowledge Portal is developed to help people involved in a spatial decision process (decision makers, practitioners, researchers) gain a holistic view of the Spatial Decision Process and better access to the vast amount of knowledge, information, and various resources that can be applied during spatial decision making. Spatial decision support is the computational or informational assistance for making better informed decisions about problems with a geographic or spatial component. This support assists with the development, evaluation and selection of proper policies, plans, scenarios, projects, interventions, or solution strategies in all application domains including ecosystem management. For more information on the public release reversion of the SDS Knowledge Portal, Version 1.1., please log on to: <http://www.institute.redlands.edu/sds/>



[\(Back to Top\)](#)

Global Spatial Data Infrastructure Latin America and the Caribbean Newsletter

GIS Tools, Software, Data

[IBGE launches free service for GPS users](#)

Fuente: <http://www.ibge.gov.br/>

The IBGE (Brazilian Institute of Geography and Statistics) made available in its website www.ibge.gov.br the PPP (Precise Point Positioning); a free online GPS (Global Positioning System) data possessing service to obtain latitude, longitude and altitude of points in Brazil. The system will allow topographic and surveying GPS users -mainly engineering and surveying professionals- to obtain high-precision coordinates within the Geocentric Reference System for the Americas (SIRGAS2000), the official reference system in Brazil. The coordinate processing software is available at www.ppp.ibge.gov.br

[UNESCO launches World Digital Library](#)

Source: Arturo Brun

UNESCO, the US Library of Congress and more than 30 other institutions have launched a Web site containing manuscripts, photographs and even early films. The goal is to make culture more accessible to everyone. The site is available in seven languages and features holdings from partner institutions in 19 countries. Major contributors to the World Digital Library are Brazil, Britain, China, France, Japan, Russia and the United States. South Africa, Uganda and Mali are putting up materials from Africa.



[GeoCommons Update](#)

Source: <http://www.geoconnexion.com/>

FortiusOne's GeoCommons is getting a great update. You'll find several new features that make finding, using and sharing geographic data and maps much more seamless.

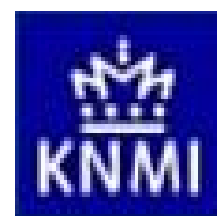
- New homepage - Includes helpful info about Finder, Maker and the GeoCommons Community
- Simple Data Uploader - Upload your KML, CSV spreadsheet and shapefiles through a single, simple interface
- Projection Support – GeoCommons now supports all projected (.PRJ) files

The technology platform that powers GeoCommons is now available as an enterprise solution called GeoIQ. For more information visit: [GeoCommons](#)

[Real-time precipitation radar via OGC-WMS](#)

Source: <http://www.unsdi.nl/>

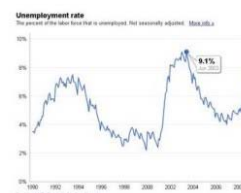
The Royal Netherlands Meteorological Institute (KNMI) real-time radar precipitation composite is now publicly available through the ADAGUC services. This OGC-WMS service can be accessed through the ADAGUC web portal. The ADAGUC project (Space for Geo-information programme, RGI-184) was finished in December 2008 and has resulted in creating web services for a variety of atmospheric datasets. The implementation of the real-time radar service was funded by Spatial Network for Geoinformation (in Dutch RGI) in the framework of the "Knowledge agenda 2008" that aimed at embedding the results of successful RGI projects. A detailed product description and the URL of the WMS service to access the service from WMS enabled applications can be found on <http://adaguc.knmi.nl>.



[Google launches to the official information](#)

Source: <http://www.soitu.es/>

Google builds graphs with official data based on queries. President Barack Obama pledged for a Google official information available to citizens, but the company went forward with a tool that allows looking for public information and creating graphics to make it more intelligible. Navigating through and using official information remains one of most painful efforts for some country's information society.



Global Spatial Data Infrastructure Latin America and the Caribbean Newsletter

China to Offer Free Global Navigation by 2020

Source: WALIS April 2009 eNews

China will be able to provide free global navigation and positioning services by 2020 with its own constellation of satellites named "Compass". This contradicts earlier reports claiming that China would complete the system before 2015. Compass would cover all of China and its adjacent regions by the end of 2010 or early 2011, and it would expand into a global network by 2020, Cao Chong, chief engineer of the China Electronics Technology Group Corp., told Xinhua News Agency. "Compass" could provide civilian clients with positioning accuracy within 10 meters without charge, compared with the 5m to 6m offered by the U.S.-developed Global Positioning System (GPS). Web link o full article: http://www.gpsdaily.com/reports/China_To_Offer_Free_Global_Navigation_By_2020_999.html

[\(Back to Top\)](#)

Training Opportunities

Updated Course Schedule 2009 at CCCG, Argentina

Source: <http://cccg.igm.gov.ar/>

The updated training schedule for first half 2009, of the Geographic Science Training Center of Argentina (in Spanish CCCG) is now available at the new Center's website at: <http://cccg.igm.gov.ar/>. CCCG's upcoming courses include GIS, digital cartography, and digital image processing. For more information please contact cccg@igm.gov.ar



Open Enrollment for DPI-INPE Short Courses

Source: <http://www.dpi.inpe.br/>



Registrations are open for short courses scheduled by the Division of Image Processing of the Institute of Space Research of Brazil (in Portuguese DPI-INPE), on Basic Geo-processing, Introduction to Spring and TerraView, Digital Image Processing, Spatial Analysis, and Geographic Databases. For detailed information on these courses please click [here](#).

[CLIRSEN's Advanced Course on GIS Applied to Watershed Management](#)

Source: <http://www.clirsen.com/>

This course aims to provide course participants with theoretical, methodological, and practical foundations, for better understanding of good watershed management practices based on the use and application of Geographic Information Systems. To view the full class schedule please log on to: <http://www.clirsen.com/>



[\(Back to Top\)](#)

Global Spatial Data Infrastructure Latin America and the Caribbean Newsletter

Funding Opportunities, Awards, Support

Annual CYTED's Research Call is Now Open

Source: <http://www.cyteted.org/>



The Ibero-American Science & Technology Development Programme (CYTED) 2009, calls for application to Thematic Networks, Coordination Actions, or Joint Research Projects. Application deadline is **June 1, 2009** at 17 hours (local time in Madrid, Spain). All documents related to this Call (Bases, Applicant Guide, and Annexes) are available at CYTED's Web site: http://www.cyteted.org/cyteted_investigacion/participa.php

CATHALAC launches its Summer Internship Program

Source: <http://www.cathalac.org/>

CATHALAC has opened registration for its Summer 2009 Internship Program. This experience offers college students and young professionals the opportunity to experience a new culture while working towards a new vision of sustainable development for Latin America and the Caribbean during an intensive ten week period in Panama. For more information regarding the internship program, and to apply, visit www.cathalac.org/educacion and click on "Internship Program", or contact: studyabroad@cathalac.org



Internships available at the World Resources Institute

Source: Susan Minnemeyer



We have two internships available at the World Resources Institute; both have the potential to become full-time positions depending on performance and funding. The internships are in support of the Southern Forests for the Future, a project focusing on identifying changes and trends in southeastern US forests. GIS/Remote Sensing Internship <http://www.wri.org/job/10970> / Research/Writing Internship <http://www.wri.org/job/10969>

3rd Update Course in Conservation Biology. National Reserve de Río Clarillo, Santiago, Chile (November 10-21, 2009)

Source: IABINFRIENDS list



Red Latinoamericana de Botánica Tyler Prize for Environmental Achievement 2004

Call is opened for participation in the 3rd Refresher Course on Conservation Biology that will take place at the National Reserve Rio Clarillo in Santiago, Chile from 10 to 21 November 2009 (funded by OAS FEMCIDI). More information is available at www.rlb-botanica.org. Deadline for scholarship application to the course is **September 15**.

[\(Back to Top\)](#)

Global Spatial Data Infrastructure Latin America and the Caribbean Newsletter

Employment Opportunities

Mote Tropical Research Lab Postdoctoral Research Scientist - Summerland Key, Florida

Source: Kevan L. Main

Mote Marine Laboratory, an independent, non-profit marine research and educational institution headquartered in Sarasota, Florida, USA, seeks to employ a Coral Biologist for assignment to its Tropical Research Laboratory (TRL) in the lower Florida Keys. The successful candidate should have a proven interest in pursuing the field of coral biology and culture as a career and will work collaboratively on projects with the Center for Coral Reef Research and the Center for Fisheries Enhancement. The position is for one year with the possibility of a second year and an option for transitioning into a permanent position, contingent upon future funding. The position will be located on Summerland Key in the Florida Keys - specifics on TRL, Mote Marine Laboratory and a more detailed description of the position can be found on our web site: www.mote.org. This postdoc is a full-time position and is eligible for Mote Marine Laboratory's standard benefit package. Proof of eligibility to work in the U.S. is required. Interested applicants should submit a cover letter and resume on or before **December 1, 2009** to: Dr. Kevan Main, Director, Center for Aquaculture Research and Development Mote Marine Laboratory, 1600 Ken Thompson Parkway, Sarasota, FL 34236. Email: kmain@mote.org

Two GIS/Spatial Analysis Positions at Temple University

Source: Jeremy Mennis



Temple University's Department of Geography and Urban Studies (GUS) invites applications for two full-time, non-tenure track Assistant Professors (Teaching/Instructional) for academic year 2009-10. The initial appointments will be for one year only. These positions may be renewable, pending continued college-level funding and satisfactory performance. For both positions, a PhD in Geography, Environmental Studies/Policy/Science, City and Regional Planning, Urban Studies, or a related field should be completed by the start of employment. The successful candidates will have an active role in GUS (www.temple.edu/gus), which offers two interdisciplinary undergraduate majors (Geography and Urban Studies, Environmental Studies), an MA in Geography and Urban Studies, and a Ph.D. in Urban Studies. We are looking for individuals who are comfortable with interdisciplinary approaches, can teach large and small classes in the undergraduate curriculum, along with advanced undergraduate and graduate courses.

Position 1 will have the following specialization: primarily in GIS and geographic methods and secondarily courses in the Environmental curriculum (such as environmental policy, political ecology, urban environments, intro to environment).

Position 2 will have the following specialization: primarily in geographic methods and spatial statistics and secondarily in economic/urban geography.

Send a letter that addresses teaching and research interests, curriculum vitae, and contact information for three references to Prof. Robert Mason (rmason@temple.edu). Electronic applications are required. Review of applications will begin May 13 and continue until the position is filled.

Global Spatial Data Infrastructure Latin America and the Caribbean Newsletter

[Director – School of Agriculture \(Dean's Office\), Science and Agriculture, St. Augustine](#)

Source: <http://uwi.edu/>



Deadline for applications: **May 31 2009**; The St. Augustine campus of the University of West Indies (UWI) had issued a post of Director- School of Agriculture; with minimum qualification of a PhD degree in an Agricultural Science with training/experience in Senior Management. Several years experience as an active researcher in any of the areas of tropical agriculture, as evidenced by a distinguished publication record in peer reviewed journals, graduate level teaching and supervision, new programme development particularly at the undergraduate and post-graduate levels, as well as considerable leadership and administrative experience in a teaching/research, institutional environment. A good understanding of the global agrifood sector and especially that of the Caribbean will be an asset. The Director must possess strong leadership qualities, strong client service and client liaison skills, be self motivated and solution oriented, a team player and a problem solver. Must also provide visionary leadership in all aspects of the School's work programmes. For further particulars of the post, please click [here](#) or contact UWI at oadmin@uwimona.edu.jm

Position Announcement: University of Missouri

Source: Leo Zonn

The University of Missouri Department of Geography invites applications for a one year, non tenure tracking Visiting Assistant Professor beginning August 2009 to teach courses in GIS and Physical Geography. A Ph.D. is required at the time of appointment. Applicants should submit a letter of interest, curriculum vitae, evidence of teaching experience, and contact information for three references to Dr. Joseph Hobbs, Chair, Department of Geography, Columbia, MO 65211. Voice phone: 573-882-8370; E-mail: hobbsj@missouri.edu. Review of applications will begin May 1, 2009, and continue until the position is filled. Information about the department is available at <http://www.geog.missouri.edu>

[\(Back to Top\)](#)

Other

[Published Uruguayan-Venezuelan agreement for Venesat 1 program development](#)

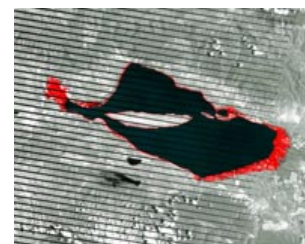
Source: <http://www.mundogeo.com.br/>

It has been Officially published the Supplementary Agreement text of the Agreement in the Field Development Program Venesat 1 (Simón Bolívar Satellite System) for the joint use of the orbital position 78 °, filed by the Eastern Republic of Uruguay for the Program Urusat-3, between Venezuela and Uruguay. Through a resolution, the Ministry of People's Power for Foreign Affairs ordered its publication in the Official Gazette number 39143, dated March 20, 2009.

[Hispaniola was a Tropical Cyclone Target Five Times in 2008](#)

Source: <http://www.terradaily.com/>

In 2008, residents of Hispaniola experienced one of their worst hurricane seasons in recent memory. Hispaniola, the Caribbean island containing Haiti and the Dominican Republic, is located directly within the hurricane belt, and was pummeled by five tropical cyclones last year: Fay, Gustav, Hanna, Ike, and low over the Dominican Republic on Sept. 24 what would become Kyle after moving north. More than 800 people were reported dead or missing from these storms. NASA satellites tracked and recorded



Global Spatial Data Infrastructure Latin America and the Caribbean Newsletter

many aspects of the tropical cyclones that hit Hispaniola. Satellites including: Aqua, CloudSat, Geostationary Operational Environmental Satellites (GOES), Landsat, QuikScat, Terra and the Tropical Rainfall Measuring Mission (TRMM).

[Volcanic eruption takes toll on Galapagos wildlife](#)

Source: <http://www.terraily.com/>

A volcanic eruption over the weekend has taken a toll on the wildlife of the ecologically-fragile Galapagos Islands, causing the deaths of numerous fish and various sea lions, said officials on Thursday. Dead wildlife was spotted in the Pacific Ocean waters off the famed island chain not long after the eruption Saturday of the La Cumbre volcano, officials at the nature preserve said. Located 1,000 kilometers (620 miles) west of Ecuador's coast, the Galapagos archipelago of 13 main islands and 17 islets is a UNESCO World Heritage Site. The pristine nature reserve was where Charles Darwin conducted his landmark research that led to his revolutionary theories on evolution.



[\(Back to Top\)](#)

Americas: Conferences, SDI Events – Year 2009

[Year 2009](#) January February March April [May](#) [June](#) [July](#) [August](#) [September](#) [October](#) [November](#) [December](#)
[Year 2010](#) [January](#) February [March](#) [April](#) May June [July](#) August [September](#) October November December

MAY 2009		
3-6 *NEW*	Nashville TN, USA	AAAA Annual Convention
4-6	Denver CO, USA	2009 ESRI Business GIS Summit
4-8 *NEW*	San Diego CA, USA	2009 BAE Systems GXP International User Conference
May 4 – June 5	Bogotá, Colombia	Introductory Geographic Information Systems and Spatial Modeling Contact: Gustavo Adolfo Mora Rodríguez E-mail: ideade@javeriana.edu.co
6-8	Los Polvorines, Argentina	First National Congress on Ecology and Soils Biology: CONEBIOS2009 Contact: Dr. Fernando Momo / E-mail: conebios2009@ungs.edu.ar
6-8	Cuiabá MT, Brazil	II CONBRAGEO – Second Brazilian Congress on Geo-processing and Geo-referencing Web page: http://www.abrageo.com.br/conbrageo E-mail: marciontunes@brturbo.com.br

Global Spatial Data Infrastructure Latin America and the Caribbean Newsletter

10-14	Montreal, Canada	5th World Conference on Environmental Education
11-14	Charlotte NC, USA	BE Conference 2009
12-14	Arlington VA , USA	First Joint Aeronautical Information Exchange Model (AIXM) and Weather Information Exchange Model (WXXM) Conference - Integrating Information for the Future
13-14 *NEW*	Quebec, Canada	Geodiffusion 2009
13-15	Montreal, Canada	Expert Meeting on Mainstreaming Biodiversity in Development Cooperation
13-15	Santiago de Cuba, Cuba	4th International Conference on Integrated Management of Coastal Zones, CARICOSTAS 2009 E-mail: ofelia_haydee@yahoo.es / ofelia@csh.uo.edu.cu / caricostas@cemzc.uo.edu.cu
14-15	Botucatu SP, Brazil	Symposium on Agricultural Sciences Geostatistics
18-21 *NEW*	Unesp/Bauru, Brazil	III WWIet Wavelets & Applications Contact: Margarete Oliveira Domingues E-mail: margarete.oliveira@lac.inpe.br
19-20	Grantville PA, USA	Seventeenth Annual Pennsylvania GIS Conference Announced
19-21	Burlingame CA, USA	Where 2.0
19-22	Quebec, Canada	IUFRO Conference on Extending Forest Inventory & Monitoring Over Space & Time Contact: Dr. Ronald E. McRoberts / E-mail: rmcroberts@fs.fed.us
19-24	Washington DC, USA	International Marine Conservation Congress (IMCC)
20-21	Victoria BC, Canada	ESRI Regional User Conference
20-22	Quebec City, Canada	IUFRO Division 4 Meeting
20-24	Washington DC, USA	International Congress on Marine Conservation Contact: IMCCprogram@conbio.org
22	Multiple Venues	International Day for Biological Diversity Web Page: www.cbd.int/idb
24-27	Toronto, Canada	Joint Assembly AGU 2009 Web: http://www.agu.org/meetings.shtml

Global Spatial Data Infrastructure Latin America and the Caribbean Newsletter

25	Sao Paulo, Brazil	<u>IV FENAFEG – National Business Fair and Geology Suppliers</u> Web Page: http://www.fenafeg.com.br / E-mail: geojunior@usp.br
25-27	Baton Rouge LA, USA	<u>CGGM 2009</u> Contact: iglesias@unican.es
26-29	Victoria, Canada	<u>CGI 2009</u> Contact: blob@cs.uvic.ca
27-28 *NEW*	Alberta, Canada	<u>Canada's only National Surveyors Conference</u>
27-30	Paraná, Brazil	<u>4th State Seminar on Territorial Studies and 2nd National Seminar on Multiple Territories</u>
28	Webcast, USA	<u>GO! Sync Mobile GIS in Action at Truckee Donner PUD</u>
28-30	Victoria, Canada	<u>CAe 2009</u> Contact: pmh@cs.bath.ac.uk
May 31 - June 4 *NEW*	Halifax, Nova Scotia, Canada	43rd Annual Canadian Meteorological and Oceanographic Society (CMOS) Congress E-mail: greenanb@mar.dfo-mpo.gc.ca Web: http://www.cmos.ca/Congress2009/

JUNE 2009

1-2 *NEW*	Houston TX, USA	<u>GIS: Real Business Value</u> Details: www.euci.com/conferences/0609-gis/
1-4 *NEW*	Sheboygan WI, USA	<u>Midwest Infrastructure & GIS Technical Conference</u>
1-4	Vancouver, Canada	<u>GeoTec 2009</u>
2 *NEW*	Albany NY, USA	<u>Creating Effective Web Maps- Free ESRI Seminar</u>
2-3	Prince George BC, Canada	<u>ESRI Regional User Conference</u>
2-4	Novi MI, USA	<u>Telematics Updates Detroit</u> Details: www.telematicsdetroit.com/register
2-5	Belo Horizonte MG, Brazil	<u>First Brazilian Congress on Energetic Woodland</u> E-mail: florestasenergeticas@fbeatos.com
2-5 *NEW*	San Francisco CA, USA	<u>2009 JavaOne Conference</u>

Global Spatial Data Infrastructure Latin America and the Caribbean Newsletter

3-4 *NEW*	Washington DC, USA	<u>Opportunities In Transportation Infrastructure 2009</u>
3-5	Orlando FL, USA	<u>Pitney Bowes Business Insight User Conference</u>
4 *NEW*	Danvers MA, USA	<u>Creating Effective Web Maps- Free ESRI Seminar</u>
5-8	Providence RI, USA	<u>Second GIS in Public Health Conference: "Putting Health in Place with GIS"</u>
8-9	Estes Park CO, USA	<u>GeoGathering 2009</u>
8-12 *NEW*	Dallas TX, USA	<u>Defense Installation Geospatial Information & Services (IGI&S) Conference & Exposition 2009</u>
11-12	Whistler BC, Canada	<u>2009 FME International User Conference</u>
13-16	Green Bay WI, USA	<u>2009 Indigenous Mapping Network Conference</u>
15-18	Washington DC, USA	<u>Intergraph 2009</u>
15-19	Rotterdam, The Netherlands	<u>GSDI - 11 Conference</u> Theme: "SDI convergence on global level: Bridging the SDI's in Europe, the Americas, Asia and the Pacific, and Africa" Contact: Harlan Onsrud / E-mail: onsrud@gsdi.org
17-19	Heredia, Costa Rica	<u>XII Ibero-American Conference on Geographic Information Systems</u> / E-mail: sibsig@una.ac.cr
21-24 *NEW*	Toronto, Canada	19th World Conference on Disaster Management (WCDM) Email: cwright@divcomevents.com / Web: http://www.wcdm.org
21-27	Ciudad de Loja, Ecuador	<u>PARAMUNDÍ, Bleak Plateau, 2nd World Congress</u>
22-24 *NEW*	São José dos Campos, Brazil	2nd Advanced Course on Remote Sensing for Environmental Study Further information: Elisabete Caria de Moraes - E-mail: bete@dsr.inpe.br
22-25 *NEW*	Bridgeport CT, EUA	<u>Sixth International Conference on Remote Engineering and Virtual Instrumentation (REV 2009)</u>
24-26 *NEW*	Toronto, Canada	<u>Innovative Lidar Solutions Conference</u>

Global Spatial Data Infrastructure Latin America and the Caribbean Newsletter

25-29	Brewster MA, USA	<u>MAPPS Summer Conference</u>
To be determined *NEW*	São José dos Campos, Brazil	First Workshop of the Brazilian Oceanographic Spatial Mission Further Information: Milton Kampel y João Antonio Lorenzetti E-mail: <u>milton@dsr.inpe.br</u> / <u>loren@dsr.inpe.br</u>

JULY 2009

2-15	Rio de Janeiro, Brazil	XXVII General Assembly IAU Web: <u>www.iau.org</u>
5-8	St. John's (Newfoundland), Canada	6th International Symposium on Spatial Data Quality (ISSDQ 2009), "Quality: From Process to Decisions" Contact: Rodolphe Devillers / E-mail: <u>issdq2009@mun.ca</u>
6-10	Viçosa, MG, Brazil	13th Brazilian Symposium on Applied Physical Geography E-mail: <u>13sbgfa@ufv.br</u>
6-10	Havana, Cuba	7th International Convention on Environment and Development; The following congresses will be part of: VII Congress on Environmental Educational, VI Congress on Protected Areas, IV Congress on Environmental Management, I Congress on Climate Change, and II Congress on Ecosystems and Biodiversity Management. Contact: MsC. Isabel Torna Falco / E-mail: <u>convencion@ama.cu</u>
8-9 *NEW*	São José dos Campos, Brazil	SICINPE 2009 Contact: José Carlos Becceneri - <u>becce@lac.inpe.br</u>
10-13	Orlando FL, USA	The 2nd International Symposium on Academic Globalization: AG 2009 Jointly with the 13th Multi-conference on Systemics, Cybernetics and Informatics: WMSCI 2009 E-mail: <u>ag@mail.iiis2009.org</u>
10-13	Orlando FL, USA	IMETI 2009, Engineering and Technological Innovation (IMETI) E-mail: <u>imeti@mail.iiis2009.org</u>
10-13	Orlando FL, USA	AG 2009 Academic Globalization (AG) E-mail: <u>ag@mail.2009iiisconferences.org</u>
10-13	Orlando FL, USA	CCCT 2009 Computing, Communications and Control Technologies (CCCT) E-mail: <u>ccct@mail.2009iiisconferences.org</u>
10-13	Orlando FL, USA	KGCM 2009 Knowledge Generation Communications Management (KGCM) E-mail: <u>kgcm@mail.2009iiisconferences.org</u>

Global Spatial Data Infrastructure Latin America and the Caribbean Newsletter

11-14	San Diego CA, USA	2009 ESRI Survey & Engineering GIS Summit
11-14	San Diego CA, USA	2009 ESRI Education User Conference
11-14	San Diego CA, USA	2009 ESRI Homeland Security GIS Summit
12-15 *NEW*	San Diego CA, USA	2009 ESRI Business GIS Summit
13-17	San Diego CA, USA	29th ESRI International User Conference
14-16	São Paulo, Brazil	GEOBrasil Summit 2009 10° International Geoinformation Congress and Exhibition Brazil Contact: info@geobr.com.br
18-21	Big Bear Lake CA, USA	2009 Society for Conservation GIS (SCGIS)
19-29	Montreal, Canada	iaMas-iapsO-iaCs-Assembly-2009 (MOCA-09) Web: http://iamas-iapso-iacs-2009-montreal.ca/
20-24 *NEW*	São José dos Campos, Brazil	12th Course of Scholarly Use of Remote Sensing for Environmental Study / Further information: Elisabete Caria de Moraes / E-mail: bete@dsr.inpe.br
21-22 *NEW*	Arlington VA, USA	Geospatial Analysis and Intelligence for Homeland Security Workshop
21-23	São Paulo, Brazil	2nd Expo GPS - 2009
21-23	São Paulo, Brazil	Geosummit Latin-American 2009 Web Site: http://www.geobr.com.br
21-24	Presidente Prudente, Brazil	6th International Symposium on Mobile Mapping Technology - MMT'09 E-mail: mmt2009@fct.unesp.br
22-24 *NEW*	São José dos Campos, Brazil	9th Meeting of Scholarly Use on Remote Sensing Information: Elisabete Caria de Moraes Correo electrónico: bete@dsr.inpe.br
27-31	Vancouver BC, Canada	GeoWeb 2009
28-30	Bogotá D.C, Colombia	First National Congress on Protected Areas Contact: Fanny Suarez V E-mail: lcano@parquesnacionales.gov.co

Global Spatial Data Infrastructure Latin America and the Caribbean Newsletter

AUGUST 2009

4-6	Providence RI, USA	2009 URISA/NENA Addressing Conference
4-6	Fairbanks AK, USA	Circumpolar Conference on Geospatial Sciences and Applications
2-15	Rio de Janeiro, Brazil	XXVII General Assembly International Astronomical Union (IAU) Web: www.iau.org
3-7	New Orleans LA, USA	SIGGRAPH 2009
10-12 *NEW*	Raleigh NC, USA	3rd Annual HAZUS Conference
10-13 *NEW*	Washington DC, USA	AUVSI's Unmanned Systems North America 2009
12-14	Fairfax VA, USA	The 17th International Conference on Geoinformatics (Geoinformatics 2009) Contact: info@geoinformatics2009.org
24-28 *NEW*	Salvador Bahia, Brazil	11th International Congress of the Brazilian Geophysical Society (SBGf) E-mail: salvador2009@sbgf.org.br Web: http://congresso.sbgf.org.br
August 31 – September 4	Buenos Aires, Argentina	SIRGAS Meeting 2009 In the framework of the International Association of Geodesy Scientific Assembly IAG 2009
August 31 – September 4	Buenos Aires, Argentina	International Association of Geodesy Scientific Assembly IAG 2009 "Geodesy for Planet Earth" Contact: Dr. Charles K Toth- /, E-mail: toth@cfm.ohio-state.edu

SEPTEMBER 2009

2-3 *NEW*	Sao Paulo, Brazil	Interop
10-11	Regina SK, Canada	ESRI Regional User Conference
13-16	Columbus OH, USA	APWA's 2009 International Public Works Congress and Expo
13-17	Houston TX, USA	GIS for Oil & Gas Conference and Exhibition
15-17	Loveland CO, USA	GIS in the Rockies

Global Spatial Data Infrastructure Latin America and the Caribbean Newsletter

17-18	Edmonton AB, Canada	ESRI Regional User Conference
21-23	Nashville TN, USA	2009 ESRI Health GIS Conference
22-23	Montréal QC, Canada	ESRI Regional User Conference
22-23	Plymouth MI, USA	PLM Road Map 2009
28-29	Vancouver BC, Canada	ESRI Regional User Conference
September 29 - October 2	Anaheim CA, USA	URISA's 47th Annual Conference & Exposition
September 30 - October 1	Penticton BC, Canada	ESRI Regional User Conference
September 30 - October 2	Santa Catarina, Brazil	CoastGIS 2009 Contact: contato@coastgis.com.br

OCTOBER 2009

4-7	Campos Do Jordão, São Paulo, Brazil	Latin American Conference IALE 2009 "Landscape Ecology in Latin America: Challenges and Perspectives" Contact: Congress Secretariat and Information E-mail: ialebr2009@eventus.com.br
5-7	Curitiba, Brazil	Meeting of the Global Partnership on Cities and Biodiversity
5-9 *NEW*	Antigua, Guatemala	Iberoamerican Workshop on Geographic Information Systems applied on Renewable Energies
5-7	Westin Westminster CO, USA	Location Intelligence 2009
6-7	Toronto, Ontario Canada	ESRI Regional User Conference
6-9	Santa Maria RS, Brazil	7th Working day on Remote Sensing Education in the frame of Mercosur , Web Page: http://www.ltid.inpe.br/selper E-mail: tania@ltid.inpe.br
7-9 *NEW*	Bogotá, Colombia	ESRI Latin American User Conference
8-25	Buenos Aires, Argentina	13th World Forestry Congress

Global Spatial Data Infrastructure Latin America and the Caribbean Newsletter

11-14 *NEW*	Atlanta GA, USA	2009 Electric & Gas User Group (EGUG) Conference Details: www.esri.com/egug
11-15 *NEW*	San Francisco CA, USA	Oracle Open World
13-16 *NEW*	SJ Campos-SP, Brazil	Workshop on Space Weather Information: Hisao Takahashi / E-mail: hisaotak@laser.inpe.br
15-16	Winnipeg MB, Canada	ESRI Regional User Conference
16-17	Miami FL, USA	Mapping Florida Communities: An Introduction to GIS & Community Analysis - One Day Workshops
16-19 *NEW*	San Antonio TX, USA	ASPRS/MAPPS 2009 Fall Conference E-mail: asprs@asprs.org
18-21	San Antonio TX, USA	GEOINT 2009
20-21	Ottawa, Ontario, Canada	ESRI Regional User Conference
21	São Paulo, Brazil	InfoGEO and InfoGPS Seminar – Transportation Management Web page: http://www.mundogeo.com/seminarios/GF/ E-mail: seminario@mundogeo.com
21-23	Pueblo CO, EUA	ESRI Southwest User's Group Conference - 2009
23-24	Tallahassee FL, USA	Mapping Florida Communities: An Introduction to GIS & Community Analysis - One Day Workshops
27-30 *NEW*	Quito, Ecuador	19th General Assembly and Consultative Technical Meetings of the Commissions of PAIGH
28-29	Halifax NS, Canada	ESRI Regional User Conference
28-31	Chihuahua, Mexico	16th Symposium on Geography Teaching in Mexico, Chihuahua 2009 Abstract deadline: 1 de junio de 2009 Contact: Álvaro Sanchez Crispin - asc@igg.unam.mx

NOVEMBER 2009

3-4	St. John's NL, Canada	ESRI Regional User Conference
------------	-----------------------	---

Global Spatial Data Infrastructure Latin America and the Caribbean Newsletter

4-6 *NEW*	Seattle WA, USA	<u>17th ACM SIGSPATIAL International Conference on Advances in Geographic Information Systems (ACM GIS 2009)</u> Abstract Submission: June 18, 2009
5	Orlando FL, USA	<u>Mapping Florida Communities: An Introduction to GIS & Community Analysis - One Day Workshops</u>
7	Jacksonville FL, USA	<u>Mapping Florida Communities: An Introduction to GIS & Community Analysis - One Day Workshops</u>
7-11	Corumbá MS, Brazil	<u>2º GeoPantanal – Symposium on Swamp Geo-technologies</u>
9-12	Gramado, Brazil	<u>3rd International Workshop on Semantic & Conceptual Issues in GIS(SeCoGIS2009) in conjunction with the 28th International Conference on Conceptual Modeling (ER2009)</u> Contact: Prof. Esteban Zimanyi E-mail: estebanzimanyi@gmail.com
10-12	St. Petersburg FL, USA	<u>2009 GIS in Transit Conference</u>
14-19	San Antonio TX, USA	<u>MAPPS/ASPRS Joint Specialty Conference</u>
15-21	Santiago, Chile	<u>ICC2009- 24th International Cartographic Conference 2009</u> http://www.icc2009.cl/
16-19 *NEW*	San Antonio TX, USA	<u>ASPRS/MAPPS 2009 Fall Conference</u>
16-20 *NEW*	New York NY, USA	<u>Interop New York</u>

DECEMBER 2009

1-4 *NEW*	Las Vegas NV, USA	<u>Autodesk University</u>
14-18	San Francisco CA, USA	Fall Meeting AGU Web: http://www.agu.org/meetings.shtml

Global Spatial Data Infrastructure Latin America and the Caribbean Newsletter

YEAR 2010

[Year 2010](#) [January](#) February [March](#) [April](#) May June [July](#) August [September](#) October November December

JANUARY 2010

5-7 *NEW*	Cuenca, Ecuador	Sixth International Conference on Environmental, Cultural, Economic and Social Sustainability Deadline for papers (a title and short abstract) is 14 May 2009
----------------------------	-----------------	--

MARCH 2010

23-25	Tampa FL, USA	DistribuTECH 2010 Conference & Exhibition
--------------	---------------	---

APRIL 2010

18-22	Kansas City MO, USA	MAGIC 2010 Symposium
26-30	San Diego CA, USA	ASPRS Annual Conference E-mail: asprs@asprs.org

JULY 2010

26-30	Los Angeles CA, USA	SIGGRAPH 2010
--------------	---------------------	-------------------------------

SEPTEMBER 2010

19-24 *NEW*	Montreal, Canada	IWA World Water Congress and Exhibition
------------------------------	------------------	---

[\(Back to Top\)](#)

Please mention SDI-LAC as source of information in any correspondence you may have on items in this issue

To subscribe to SDI-LAC, please do so online at:
<http://www.gsdi.org/newslist/gsdisubscribe.asp>
Nancy Aguirre, PAIGH, Editor cnaguirre@ipgh.org
Global Spatial Data Infrastructure Association,
<http://www.gsdi.org>

DISCLAIMER:
GSDI, PAIGH and the Editor will not be held liable for any errors, mistakes, misprints or incorrect information. Copyright © 2009. All rights reserved.