

GSDI AND IGS GLOBAL NEWS

News from the GSDI Association and the International Geospatial Society
Vol. 4, No. 7, 2014

"The Global Spatial Data Infrastructure Association - Advancing a Location Enabled World"

FROM THE PRESIDENT



As we go to press, GSDI President, Dr. David Coleman, and President-Elect, Dave Lovell, Executive Director of EuroGeographics, are scheduled to attend the Global Forum on the Integration of Statistical and Geospatial Information, 4-5 August 2014 at UN Headquarters in New York.

The Forum is organized by the United Nations Statistics Division, as the Secretariat of the UN Statistical Commission, and the UN Committee of Experts on Global Geospatial Information Management (UN-GGIM), and substantively supported by the United Nations Expert Group on the Integration of Statistical and Geospatial Information.

Convened in accordance with Statistical Commission decision 44/101 and UN-GGIM decision 3/107, which welcomed the proposal to organize an international conference as a way of reaching out and developing best practices bringing together both statistical and geospatial professional communities, the Global Forum will bring together senior leaders from both professional communities to discuss the strategic vision and goals for the integration of statistical and geospatial information.

The Global Forum aims to continue the global consultation and communication on the development of a global statistical-geospatial framework, initiated by the UN Statistical Commission and UN-GGIM, and the work of the Expert Group on the Integration of Statistical and Geospatial Information. It will take place in conjunction with the fourth intergovernmental session of the UN Committee of Experts on Global Geospatial Information Management (UN-GGIM), to be held in New York, from 6-8 August 2014. For more information, see: <http://ggim.un.org/Global%20Forum.html>

Having achieved Special Consultative status with UN ECOSOC in May 2014, the Association is identifying ways in which it can support the responsibilities inherent to that standing. Our past and current focus on 'SDI Best Practice' will hopefully support similar initiatives being developed within the UN-GGIM framework.

ASSOCIATION & MEMBER NEWS

Industry Member News

News from Esri



July is one of the biggest – and busiest - months of the year for Esri, as this is the traditional month for conducting the Esri International User Conference in San Diego, CA, USA. The Esri UC itself is surrounded by numerous smaller conferences on specialist topics, plus literally hundreds of workshops, training sessions, and an exhibition involving hundreds of firms.

Reports from the annual Esri User Conference, including the many side events, can now be found on the Esri Events website at: <http://www.esri.com/events/user-conference>.

News from Intergraph



Real-time Asset Management within Map-Based Workflows

As part of our **Summer Webcast Series**, Hexagon Geospatial invites you to view this **on-demand webcast**, an office and field-based workflow tool supporting Centralised and Integrated Asset Management.

View the Webcast here:

<http://forms.hexagongeospatial.com/centralisedassetmanagement?elq=163cbd9bb1d54264b28a500f3bde0b15&elqCampaignId=2898>



Just the Facts

When Mornington Peninsula Shire held a major review of its existing asset management solution, they found that their collection, inspection and management workflows were in need of a considerable overhaul. Reliance on paper-based inspection records and outdated processes were preventing the Shire from managing information effectively.

To facilitate consistent and accurate data collection, the Shire recognized the need for a centralized process for inspecting and updating assets in the field, one that enabled secure, real-time data access within map-based workflows and forms. They chose GeoMedia Smart Client as the single solution supporting internal personnel and external contractors alike collecting data from mobile devices, in both connected and offline workflows. Learn how the application's ease of use enables even inexperienced GIS users to exploit the wealth of information contained in the database.

Read more about how Mornington Peninsula Shire has realized tremendous efficiencies in their daily work, even with offline data updating, here:

<http://blog.hexagongeospatial.com/real-time-asset-management-map-based-workflow/?elq=163cbd9bb1d54264b28a500f3bde0b15&elqCampaignId=2898>

About the Speaker

Davey Smith has been with the Mornington Peninsula Shire, Australia for a total of six years working in various roles within the Infrastructure Strategy Unit. In his current role as Project Manager for Renewal Planning, Davey directs long term planning and renewal of the Shire's \$1.6 billion worth of infrastructure assets. This includes managing the overall process for collecting and updating spatial and attribute information on 220,000 individual infrastructure assets.

Visit the Summer Webcast Series here:

<http://www.hexagongeospatial.com/Resources/webinars/ArchivedWebinarDetails.aspx>

Mobile App Enhances Citizen Reporting and Engagement

Hexagon Geospatial announces that the town of Laubach, Germany recently implemented Mobile Alert to help gain citizen-driven insights about incidents and other damages to infrastructure.

As a mobile application for crowdsourcing incident information, Hexagon Geospatial's Mobile Alert empowers citizens to play an active role in locating and

reporting issues such as road or utility line damage. The simplified reporting process allows citizens with GPS-enabled smartphones to photograph, categorize, and submit incidents to the appropriate authorities in a few clicks.

"Mobile Alert is the ideal application to engage citizens in reporting," said Mladen Stojic, President of Hexagon Geospatial. "Laubach joins a host of towns and cities across Europe that now rely on Mobile Alert to help enhance decision-making through the use of crowd-sourced geospatial data."

Working with Hexagon Geospatial's partner Intergraph SG&I, the town of Laubach selected Mobile Alert to easily bundle damage reports, provide immediate visualization of the reported incidents, and seamless integration with GeoMedia Smart Client. The town is using Mobile Alert for reporting and storing data on a wide-range of incidents, such as tree and shrub cuttings, road signs, streetlights, street cleaning, and waste removal.

Located in the Gießen region of Hesse, Germany, Laubach has approximately 10,000 residents and is a tourist destination. With many historic and colorful half-timbered buildings, Laubach is also located near the Vogelsberg Mountains.

For resource-thin public works agencies, Mobile Alert offers a reliable, cost-effective means of collecting actionable data from any citizen source. Local government agencies and utility companies simply subscribe to receive the crowd-sourced information by email or through OGC web services.

Product: GeoMedia Smart Client

<http://www.hexagongeospatial.com/company/news/newsreleases.aspx?NewsTagID=43e83b1c-527c-42b6-b9f1-27adc24e18b4>

Mobile Alert

<http://www.hexagongeospatial.com/company/news/newsreleases.aspx?NewsTagID=94d217bf-10c8-44fc-84a7-f86599552106>

News from Boundless



Boundless Growth

Eddie Pickle, Boundless Executive Vice-President and Treasurer of the GSDI Association, offers this update on 'Boundless Growth' in 2014.



Boundless is growing but our focus remains helping customers build the best web mapping applications. We've recruited a stronger leadership team and are enhancing our current products while also developing new products and services to help customers in new ways.

We recently added Ann Johnson as our new CEO to strengthen our team and leadership. Ann's experience with enterprise software, particularly her deep knowledge of security, greatly expand our expertise in critical areas of Spatial IT.

At the same time, we have been steadily adding capabilities to OpenGeo Suite to enable easier, more scalable web services deployments. To help our customers successfully build enterprise mapping applications, we're advancing open source software like OpenLayers 3 and providing new SDK templates that leverage this new technology. We continue to "lower the cost of free software" by making secure, fault tolerant, and scalable deployments of our open source stack simpler, faster, and easier.

Additionally, some of our key initiatives include:

- Releasing new online training courses and on-site classes that enable us to train many more users on how to deploy and administer GeoServer and PostGIS.
- Expanding our professional services offerings to make developing, implementing, and perfecting open source solutions quicker and easier.
- Expanding our partner program to create new capabilities (such as new options for Big Data) and grow internationally.
- Increasing ways to help QGIS users easily work with, style, and publish data to the web.

With Ann joining Boundless, I'm focusing my efforts on developing these and other capabilities to grow our business, with a particular emphasis on developing new partnerships to create a new geospatial ecosystem based on open source software. We believe the future is bright for open source-based solutions to address a variety of challenges, from publishing data to asset management to customer services. I look forward to working with our customers and partners to reshape this industry!

Eddie Pickle, Boundless CEO

From the Open Geospatial Consortium (OGC)

OGC announces new Geospatial User Feedback Standards Working Group

Members of the Open Geospatial Consortium (OGC®)



Creative Commons Attribution Share Alike License

have formed an OGC Geospatial User Feedback Standards Working Group (SWG). The purpose of this SWG will be to reach consensus on a standard way to encode users' comments on the results those users obtain when querying spatial databases. This effort has the potential to improve metadata, complement the producer quality indicators, extend the documentation about usability and usage of datasets, help data producers improve their data collection and publishing methods, and ultimately improve the quality of the data as well as the quality of analyses performed on the data. The OGC Geospatial User Feedback SWG charter can be downloaded from:

<https://portal.opengeospatial.org/files/59800>.

The explosive growth of geospatial data and related metadata has decreased the efficiency of data search catalogues. That is, the increase in the number of data resources often makes the discovery of a dataset that fits user requirements very time consuming. To make searches more efficient, many projects, such as GeoViQua (www.geoviqua.org/), are collecting user feedback. All would benefit from a common user feedback model that is easy to implement, simple enough for the user to understand, and powerful enough to provide useful information for data providers. The SWG's first task is to develop a conceptual model that will serve the purpose of creating one or more encodings for user feedback. The GeoViQua User Feedback Model (<http://www.geoviqua.org/UserFeedbackSystem.htm>) offers a starting point for this discussion.

The Geospatial User Feedback SWG convenors invite the participation of interested parties from across a broad range of the geosciences, academic institutions, and commercial and government organizations that are interested in improving metadata catalogues and discovery portals so that they provide users with better, more "fit for use" results and data assessment capabilities.

OGC calls for public comment on candidate standard for encoding coverages in JPEG2000

The Open Geospatial Consortium (OGC®) membership seeks public comment on the candidate OGC GML Application Schema - Coverages – JPEG2000 Coverage Encoding Extension (abbreviated as "GMLCOV for JPEG2000"). This candidate standard can be downloaded from:

<http://www.opengeospatial.org/standards/requests/123>

GIS coverages (including the special case of Earth images) are two- (and sometimes higher-) dimensional metaphors for phenomena found on or near a portion of the Earth's surface. Coverage instances may be encoded using the OGC GML Application Schema – Coverages

(GMLCOV) Encoding Standard, which is based on the Geography Markup Language (GML), an XML grammar written in XML Schema for the transport and storage of geographic information. GMLCOV for JPEG2000 specifies an encoding of GML coverages for the JPEG2000 data exchange formats for still imagery (i.e. JPC, JP2, JPX). This document is the basis for the GML in JPEG2000 encoding standard v2.0 and a future format extension for WCS.

Suggested additions, changes, and comments on this candidate standard are welcomed and encouraged. Such suggestions may be submitted at by **20 August 2014**.

OGC calls for comment on candidate Moving Feature Encoding standard

The OGC seeks public comment on a candidate OGC® Moving Feature Encoding Standard. Part I of this candidate standard provides a standard way of encoding moving feature data in an XML encoding in the form of an OGC Geography Markup Language (GML) application schema. Part II provides a standard way of encoding moving feature data in a simple CSV (comma-separated value) format.

The candidate OGC® Moving Feature Encoding Standard is available at:
<http://www.opengeospatial.org/standards/requests/124>

Comments are due by **23 August 2014**.

The advance of mobile computing and internet-connected sensors (including sensors and GPS transponders in cell phones and notebook computers) brings with it a rapid rise in applications for moving feature data, typically representing vehicles or pedestrians. Many innovative moving feature applications will require the overlay and integration of moving feature data from different sources. Examples can easily be imagined for disaster risk management, traffic information services, security services, navigation for robots, aviation or maritime traffic monitoring, and wildlife tracking and conservation. Most current applications, however, are limited to single-source moving feature data.

More efficient moving feature data exchange will result in a requirement for massive data handling. The CSV style encoding provides an efficient and easily understood standard for encoding lightweight data records, which will be important for many applications involving large data volumes and real-time response. The GML application schema style encoding for Moving Features provides for the encoding of more complex spatial information.

This standard addresses only “rigid” moving features,

such as vehicles, as opposed to those that deform, such as flood water, and it does not address moving features whose descriptions contain other moving features that must be updated as the feature moves, such as control surfaces on an unmanned aerial vehicle (UAV). It also is for archived Moving Feature data only, and not for live feeds from sensors.

News our Americas Members

US Agencies to Establish new 3D Elevation Program

The USGS, along with other federal, state, local and private agencies is establishing a new **3D Elevation Program (3DEP)** [<http://nationalmap.gov/3DEP/>] designed to respond to the growing needs for three-dimensional mapping data of the United States. This coordinated partnership can help meet the country's needs for high-quality, 3D elevation data.

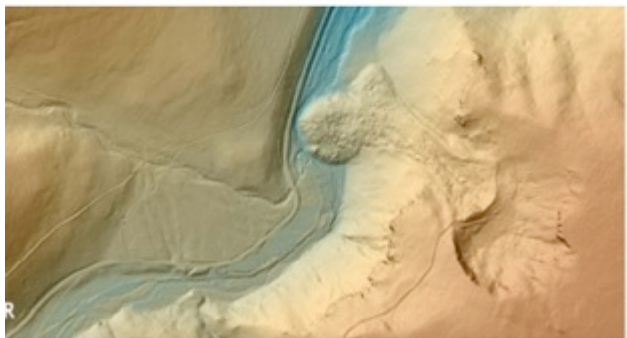
Current and accurate 3D elevation data are essential to help communities cope with natural hazards and disasters such as floods and landslides, support infrastructure, ensure agricultural success, strengthen environmental decision-making and bolster national security.

The primary goal of the 3DEP partnership is to systematically collect 3D elevation data across the Nation, using lidar, a remote sensing detection system that works on the principle of radar, but uses light from a laser.

“We are excited about working with partners to apply the game-changing technology of lidar to benefit many critical needs of national importance,” said Kevin Gallagher, USGS Associate Director of Core Science Systems. *“For example, FEMA [<http://www.fema.gov/>] and NOAA [<http://www.noaa.gov/>] are some of our strongest partners because they rely on this type of data to significantly improve floodplain mapping and to better communicate flood risks to communities and citizens.”*

The 3DEP initiative is based on the results of the National Enhanced Elevation Assessment [<http://nationalmap.gov/3DEP/nea.html>] that documented more than 600 business and science uses across 34 Federal agencies, all 50 States, selected local government and Tribal offices, and private and non-profit organizations. The assessment also shows that 3DEP would provide more than \$690 million annually [<http://pubs.usgs.gov/fs/2012/3089/>] in new benefits to government entities, the private sector, and citizens.





A comparison of an air photo and a lidar image of an area along Secondary Road and Camp Creek, 12 miles north of John Day, OR. The lidar image allows identification of landslide activity that is otherwise masked by trees. (Photo courtesy of the Oregon Department of Geology and Mineral Industries).

A recent White House fact sheet described how accessibility of accurate, high-quality 3D elevation data provides the foundation to the Administration's overall plan to assist populations in the areas of flood risk management, water resource planning, mitigation of coastal erosion and storm surge impacts, and identification of landslide hazards. (see: <http://www.whitehouse.gov/the-press-office/2014/07/16/fact-sheet-taking-action-support-state-local-and-tribal-leaders-they-pre>)

The USGS will host a briefing on Capitol Hill on July 25 to further describe the importance, benefits and growing needs for 3D elevation data. More information about 3DEP and state specific fact sheets is available online. (visit: <http://nationalmap.gov/3DEP/>).

News from CIESIN

Staffing Changes for CIESIN

CIESIN is pleased to announce several new staff members and changes in duties. The Information Technology Division welcomes **Agustin (Augie) Dominguez** as a part-time system administrator, primarily supporting the Africa Soil Information Service. Dominguez was previously employed at Columbia University and brings diverse skills and experience in computing systems development and operations. As of

July 1, the division also gained **Kytt MacManus**, who has been a geographic information specialist in the Geospatial Applications Division. MacManus will now focus primarily on designing and developing Web and mobile applications for geospatial and other scientific data.

Joining CIESIN as casual employees are **Ilyun Koh**, who recently received his MPA in development practice from Columbia University, and **Caroline Weisstuch**, a Mamaroneck High School student who worked at CIESIN last summer. Koh is helping to prepare the fourth version of the Gridded Population of the World data set, and Weisstuch is supporting efforts to develop a decision support system for flood hazard along the Hudson River.

This spring and summer, CIESIN has also been collaborating with **Pinki Mondal**, a postdoctoral research scientist with Columbia's Department of Ecology, Evolution, and Environmental Biology (E3B). Mondal is helping to assess the use of remote sensing data from the new Visible Infrared Imaging Radiometer Suite (VIIRS) instrument for urban mapping and other applications, in support of the NASA Socioeconomic Data and Applications Center (SEDAC) operated by CIESIN.

Investment in Spatial Data Infrastructure Addressed in Mozambique Visit

CIESIN deputy director **Marc Levy** traveled to Maputo, Mozambique, July 6–8 for a series of meetings with government ministries, including a presentation to a group of about 45 officials on how to harness spatial data infrastructures for development. His trip was undertaken in collaboration with the Columbia Center on Sustainable Investment (CCSI), a joint center of the Columbia University Law School and the Earth Institute dedicated to the study, practice, and discussion of sustainable international investment.

Earth Science Community Discusses Approaches to Managing Data

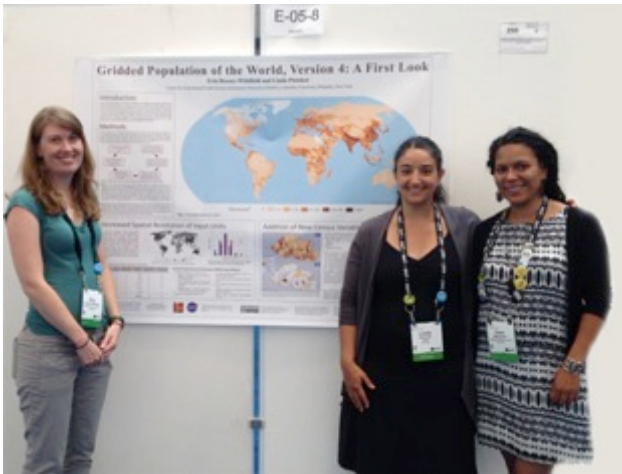
Robert Downs, CIESIN senior digital archivist, recently travelled to Copper Mountain, Colorado, to participate in back-to-back meetings of the earth science data community. At the Data Observation Network for Earth (DataONE) User Group Meeting July 6–7, which focused on improving capabilities of earth science data facilities, Downs presented a poster on the use of digital object identifiers (DOIs) in fostering data attribution. He then participated in the 2014 Federation of Earth Science Information Partners (ESIP) Summer Meeting July 7–11, which addressed ways to improve the management, dissemination, and use of earth science data. At this meeting, he gave presentations on implementing DOIs and on software citation, and presented a poster on



improving review of scientific data for public dissemination. He also co-convened the Science Sustainability Roundtable and gave a short presentation on a user's perspective of sustainable software. He participated in the meeting of the Board of Directors of the Foundation for Earth Science as an elected ESIP Federation representative.

DataOne - <http://www.dataone.org/>
2014 Summer Meeting of the Federation of Earth Science Information Partners (ESIP) -
<http://commons.esipfed.org/2014SummerMeeting>

CIESIN Staff at 2014 Esri UC



CIESIN geospatial information specialists Erin Doxsey-Whitfield, Dara Mendeloff, and Linda Pistolesi at the 2014 Esri International User Conference in San Diego, California, July 14–18. The poster highlights developments in the fourth version of CIESIN's flagship data product, the Gridded Population of the World (GPW).

CIESIN geospatial information specialists **Erin Doxsey-Whitfield, Dara Mendeloff, and Linda Pistolesi** attended the **2014 Esri International User Conference** in San Diego, California, July 14–18. At the Monday night Map Gallery, the team presented a poster highlighting developments in the fourth version of the Gridded Population of the World (GPW) data set, including the addition of new census variables and increased spatial resolution of input units. They also participated in pre-conference seminars and technical workshops, and Mendeloff attended the Esri Education GIS Conference. Esri's annual conference typically attracts more than 15,000 geospatial data and technology experts from around the world.

Esri Conference - <http://www.esri.com/events/user-conference>

Gridded Population of the World Version 4: A First Look
http://www.ciesin.org/binaries/web/global/news/2014/gpww4_2014esriconf_poster_v3_amd.pdf

GSDI Americas Members Launch Regional Newsletter

The GeoSUR Program, led by the Development Bank of Latin America (CAF) and the Pan American Institute of Geography and History (IPGH), announces the first edition of his monthly newsletter, which aims to disseminate the achievements and characteristics of the program, analyze and submit events, projects and best practices for the application of geospatial information in the (sustainable) development of the region and making decisions as part of the Geospatial Data Infrastructure of the Americas.

According to GeoSUR, the newsletter will feature original contributions, which will be presented in the form of interviews, editor's notes, permanent columns GeoSUR / CAF and IPGH, news and alerts on the portal GeoSUR Program. The Bulletin will address the Americas and the international community related to the theme that GeoSUR addresses. The publication will be available in Spanish, English and Portuguese.

Volume 1, No. 1 for July 2014 of the Newsletter can be downloaded from here:
http://memberservices.gsd.org/files/?artifact_id=1539

CAF: <http://www.caf.com/en>

GeoSUR: <http://www.geosur.info/geosur/index.php/en/>

IPGH: <http://www.ipgh.org/>

News from Asia-Pacific Members

Chinese Translations of A-P Section of the new Regional Newsletter

Translations into Chinese of the Asia-Pacific section of the new GSDI SDI Regional Newsletter, edited by Kate Lance, are published on the GSDI Newsletter website and can also be downloaded directly from the archive at the links below.

May 2014 -

http://memberservices.gsd.org/files/?artifact_id=1532

June 2014 -

http://memberservices.gsd.org/files/?artifact_id=1533

Taiwan Association of Disaster Prevention Industry (TADPI) meet GSDI Staff

GSDI's newest member, the Taiwan Association of Disaster Prevention Industry (TADPI) met with GSDI Operations & Communications Manager, Roger Longhorn, and vice-Chair, Europe, Dr Joep Crompvoets, on their recent visit to Taipei, at which the two GSDI O&M Committee members also delivered keynote



presentations at the Open Data Forum on 9 July. Longhorn and Dr Cropvoets were given an excellent welcome by TADPI, including briefings from several of the 40 TADPI members about their involvement in disaster prevention. Also during the visit, Longhorn and Cropvoets met with Dr. Jimmy Chou, O&M Committee vice-Chair, Asia-Pacific region.

News from European Members

University of Twente launches research initiative

University of Twente has launched a major research initiative to leverage smallholder agriculture with remote sensing. A unique research project on the application of satellite images in African and Asian agriculture.

A team of the ITC Faculty of the University of Twente received a research grant of 7.5 million US\$ from the Bill & Melinda Gates Foundation to help the world's poorest people. The project called STARS, which stands for Spurring a Transformation for Agriculture through Remote Sensing, will identify how earth observation data products may help improve current information and decision support systems in the smallholder economies of sub-Saharan Africa and South Asia. The project will be executed in close collaboration with research institutes in West and East Africa, Bangladesh, Australia, Mexico and the United States.

Agriculture remains the predominant occupation of the world's poorest people in sub-Saharan Africa and South Asia, but many struggle to produce crops consistently and sustainably year-by-year, and the large persistence of subsistence farming deters economic development at the household scale. Earth observation technology has become a regular tool in the large-scale agricultural production systems of industrialized and emergent countries; its use in context of African and Asian smallholder farmers comes, however, with substantial challenges.

Technological advances

Smallholder farmers often use small cropland plots with variable boundaries, they often grow multiple crops and crop varieties on the plot at the same time, and there is a rich variety of farm practices in place that add to the heterogeneous mosaic that African and Asian farmland often is. These conditions make it hard to discriminate cropping systems, crops and cropping practices from the skies, and this presents a fundamental barrier to accurate information, timely crop monitoring and forecasting, and improved agricultural advisories. In recent times, technological advances have brought us improved satellite image resolution, improved revisit frequency that allow better monitoring during the

growing season, and improved spectral characteristics in those data products.

Consortium

Led by the ITC Faculty of the University of Twente, a consortium of international research institutes will test a number of hypotheses about the use of earth observation data.

This should identify which farming stakeholders are best served with which information, and how that information should be provided to optimally inform decision-making. Stakeholders are not only farmers, but also the private sector that delivers farm inputs (for instance, seeds, fertilizers and tools) and governmental decision-makers, such as staff of ministries of agriculture and food security.

"Our research timeline first focuses on cropland delineation," says ITC project lead Rolf de By, "as we need to know first where farming takes place. Next, we will seek to detect, always using remote sensing, which is the cropping system that the farmer applies on the delineated plots: are they pure maize systems, or is the farmer also growing beans? Subsequently, we will want to know about crop health and crop growth progress."

STARS project

In the STARS project, ITC collaborates with the Commonwealth Scientific and Industrial Research Organisation (CSIRO, Australia), the International Crops Research Institute for the Semi-Arid Tropics (ICRISAT, Mali and Nigeria), the University of Maryland (USA), and with the International Maize and Wheat Improvement Center (CIMMYT, Bangladesh and Mexico). These partners bring their own suite of local partners to the scene, giving a wide international collaboration network for joint work on the problem domain.

STARS, which will last for 20 months, will develop open data products to be used by the wider research community. Contact person: Joost Bruysters, (mailto:j.c.p.bruysters@utwente.nl) Advisor/editor External Communications, tel +31 (0)6 10488228

ITC Bridging VGI and SDI: Floating Car Data



Have a look at the interesting Floating Car Data website <http://www.floatingcardata.info/index.html> created to 'bridge the gap' between Spatial Data Infrastructure (SDI) data and Volunteered Geographic Information (VGI). It



uses floating car data collected with different projects. Floating car data and the different projects are described in the next paragraphs. In the project different tools are used to bridge SDI and VGI data.

Floating Car Data

FCD refers to data that is continuously collected from vehicles, for example GPS coordinates. The basic form of FCD is the position of a vehicle at a certain time. It uses mostly GPS or mobile phones equipped with GPS. Nowadays FCD makes use of data collected by more than one vehicle, a fleet of vehicles is used to gather data.

Volunteered Geographic Information

In the last decade with the emergence of Web 2.0, there has been a growing participation of citizens in the production and sharing of the geographic information. These citizens have largely been untrained and their actions are voluntarily, therefore it is termed as Volunteered Geographic Information.

Spatial Data Infrastructure

Since the beginning of the 1990s Spatial Data Infrastructures (SDIs) have been a concept. Geographical information systems (GIS) can perform data manipulation with the help of tools, however they also need data as input. This data can be facilitated by SDIs. Literature on SDIs focus primarily on the public sector. In the public sector the idea of "collect once, use many times" is logical since it is taxpayers money that is spent on geo-information. For this project the access to SDIs in developed and developing countries is evaluated. There are five components of SDIs: people, data, access network, policies, standards. In terms of data dissemination, often (OGC-compliant) web services are used. In the Netherlands, an overview of the web services that are available is found at: <http://www.nationaalgeoregister.nl>

Projects

The **enviroCar** is a Citizen Science Project made in collaboration between 52°North and the Münster University, Institute for Geoinformatics. Aim of this project is to encourage citizen to take actions on environmental issues, improve the city. Citizen can do this by collecting data about their car fuel consumption, CO₂, engine speed and noise emissions. EnviroCar can help to accurately evaluate your driving costs, compute emitted CO₂ and estimate the level of noise generated by your car. Data is collected by using Android smartphone and a Bluetooth OBD-II adapter.

GoodRoads is a project, which aims to gather information about the quality of the roads and displays

maps with the road quality to the user. It collects data with an application on a mobile phone. The application uses the accelerometer to register bumps in the road and it sends the data to the server. The GoodRoads web server receives the data and with data mining algorithms the quality of the road surface is gathered. The application requests the information and displays it to the user. It creates a classification based on the measurements by the users, the classification ranges from "good roads" in green, to "watch out" in yellow, "shakes" in orange, and "poor roads" in red.

Roadroid is a project based in Sweden, where information about the smoothness of the road is collected by the use of Android based mobile phones. It uses the accelerometer in the mobile phone to measure the International Roughness Index (IRI). The data of Roadroid is partially accessible with via the website of Roadroid, in the online platform, the sensor and user that has collected the data is visible.

About the Project

Four Geographic Information Management and Applications (GIMA) [<http://www.msc-gima.nl/>] students at ITC in the Netherlands: Swarish Marapengopi, Stanislav Ronzhin, Maarja Mahlapuu and Anne Jop de Jong. They created the website to bridge the gap between VGI and SDI data, as a project for the Advanced Applications module and the project is supervised by dr.ir. R.L.G. (Rob) Lemmens from the ITC in Enschede. The project started with research to find certain types of VGI about road quality, and was extended with other floating car data.

EuroGeographics News

The **EuroGeographics General Assembly** will be held on 28-30 September 2014 in Chisinau, Moldova.

The Latvia State Land Service (SLS) has recently launched the mobile application *kadastrs.lv* (Cadastre), which is one of just few mobile solutions offered by state institutions in Latvia.



The SLS maintains several information systems and databases of national importance where the National Real Estate Cadastre Information System is the main data source comprising information on cadastral objects across the country (100% of all land units; 96% of all buildings).

The mobile application is designed to respond to the needs of individuals, businesses and other organizations. The unique value of the application lies in the opportunity to receive data on any property directly in customer's mobile phone or tablet. Even more, the application identifies user's geographical location (only in the territory of Latvia) and selects cadastral data for the property at the location.

Ambition of the SLS is to be a leader in e-governance in Latvia providing versatile, qualitative, user friendly and up-to-date electronic services. Read more here:

http://www.eurogeographics.org/sites/default/files/MobApp_Kadastrs_LV.pdf

Links:

Latvia State Land Service - <http://www.vzd.gov.lv/kadastrs.lv> (Cadastre) - <https://www.kadastrs.lv/>

EUROGI News

2nd EUROGI imaGIne 2014 Conference Update



Geographic Information: An Exciting Major Economic Growth Sector with Substantial Societal Impacts

According to a report published last year for Google prepared by the British research company Oxera the Geographic Information (GI) sector is estimated to be globally worth about \$150 - 270 billion annually. This is approximately one third the size of the global aviation industry.

What is possibly even more important than the size of the GI sector is that Oxera estimates that it is growing globally by about 30% annually. This represents truly outstanding expansion. The fairly well known Google Maps and Google Earth represent a tiny tip of a major GI iceberg. Nowadays hundreds of millions of smart phones in Europe have a location sensing ability and location based services are being delivered in real time on a rapidly increasing scale to citizens. Businesses are

increasingly becoming aware of the efficiency gains, cost savings and market discovery uses of GI.

Europe cannot afford to let the opportunities offered by this massive and rapidly expanding market slip away.

Anyone who is interested in promoting economic development, or more generally, just understanding how GI will change ordinary citizen's daily lives and impact on businesses should attend EUROGI's **imaGIne** conference in Berlin on 8 and 9 October. A key aim of the conference is to showcase the best Europe has to offer in the GI field.

Smart cities, energy, demography, job creation and economic growth, environment, open information and transparent governance are some of the main fields in which the role of GI will be considered in detail during interactive sessions. Another area of focus will be the European Union's multi-billion investment in Copernicus, a satellite based initiative which in the coming years will provide massive amounts of new detailed GI which can be used across many fields.

As a practical example of the application of GI there will be a session that focuses on the insurance industry. Examples of how costs can be avoided and efficiency gains can be made will be showcased. Whilst the focus will be on the insurance industry delegates could get insights that apply to many other sectors, such as retail, transport, health, safety and security.

We all are acutely aware that we live in an increasingly globalised world. Apart from focusing on specific areas such as energy and an industry (insurance) top speakers will place Europe in a global GI context; what are our current strengths and weaknesses and where are the globally emerging opportunities on the basis of new and emerging GI technologies.

Potential Delegates

Given the societal wide impact of GI potential delegates could come from virtually any economic, social, environmental or governance sector. Business people, government policy makers as well as others from quite different backgrounds would all be welcome and would surely gain new and useful insights into how GI can benefit them in work, or leisure, environments.

The presentations and discussions will be aimed at a non-technical audience so EUROGI particularly looks forward to attendance by non-technical persons, 'the uninitiated'. A key aim is to keep jargon to an absolute minimum.

Patronage and Speakers

In recognition of the importance of the GI sector and more specifically the imaGIne conference, the German



Vice Chancellor, Sigmar Gabriele, is the patron of the conference.

In line with the 'showcase the best Europe has to offer' aim EUROGI has lined up top level speakers in the various focus areas. The speakers will be from the public and private sectors as well as from the European GI research community. Deputy Director-General Roberto Viola of the European Commission, DG CONNECT, will give the opening keynote at the 2nd EUROGI imaGIne Conference 2014.

imaGIne and INTERGEO

The **imaGIne** conference will be held in the same venue and at the same time as the annual **INTERGEO** trade fair. The fair provides a showcase for GI technologies, with between 400 and 500 exhibitors each year. Based on past experience, about 15 000 people are expected to visit the fair. Conference delegates are welcome to browse at the fair as part of a combined conference/fair offer.

Further information about the conference and registration can be found at www.imagine2014.eu. A flyer with all basic information is available here: http://www.imagine2014.eu/scripts/download.php?file=/data/upload/imaGIne2014_Flyer.pdf

To find out more, contact Simon Vrečar, the EUROGI Secretary General by email simon.vrecar@eurogi.org or by mobile +386 41 69 35 37.

EUROGI and HUNAGI News

Awards at the FOSS4G European Conference

The first FOSS4G European Conference held in Bremen 15-18 July 2014 was completed successfully, attracting over 160 participants from 50 countries. The topics included Independent Innovation for INSPIRE, Big Data and Citizen Participation. Keynote speakers included Jeff McKenna, President of the OSGeo Foundation, Patrick Hogan, manager of the NASA World Wind project, Suchith Anand of the ICA Commission on Open source Geospatial Technologies, and Venkatesh Raghavan of Osaka City University.

Host was the Jacobs University in Bremen, under the guidance of Prof. Peter Baumann, who will be keynote speaker at the Open Source, Open Data for GIS session of the 2nd imaGIne conference of EUROGI in Berlin (see previous article).

The conference details on the program, presentations and images will be available on the FOSS4G-Europe website at <http://foss4g-e.org/>. A

series of academic sessions as a third parallel track enabled insights of the developers' scientific research to be shared and discussed with the participants. This track were chaired by P. Baumann (Jacobs University), M. Brovelli (PoliMi), Sven Schade (JRC) and Massimiliano Cannata of SUPSI (CH).



Host Prof. Peter Baumann and Patrick Hogan of NASA.

Besides the keynote provided by Patrick Hogan of NASA, the **World Wind Europa Challenge** had the floor for two plenary sessions: four of the six university teams delivered presentations on their developments and applications using World Wind:

- **GeoQoS** (Mentor: Peng Yue, Wuhan University),
- **iGlobe** (Mentor: VarunChandola University of Buffalo),
- **PoliCrowd 2.0** (Mentor: Giorgio Zamboni, Politecnico di Milno Como Campus),
- **ReSC** (Mentor: Jon Blower University of Reading),
- **Multiglobe, Solar Irradiance Calculator**, (Mentor: Francesco Pirotti, University of Padova),
- **WCPS Cross-Coverage Analysis** (Mentor: Piero Campalani Jacobs University).

The **NASA WVEC 2014 Award Ceremony** took place at the closing plenary.



Based on the agreed evaluation criteria applied by the 18-member scientific board, the following three winners were announced - the teams of iGlobe and

WCPS receiving equal scores:

- 1st place: **PoliCrowd 2.0** - Andrés Fernando Quiñones Valencia, Luca Poddighe
- 2nd place: **iGlobe** - Thomas Effland, Bob DeBortoli, Pavey Telesphore Nganpi Tchaeleuch

- 2nd place: **WCPS Cross-Coverage Analysis** - Alex Mircea Dumitru, Alan Beccati, Vlad Merticariu

EUROGI sponsored the iGlobe financial award of 500€. ICA, SIFET (Italian Society for Photogrammetry and Remote Sensing) and Trilogis Ltd. awarded PoliCrowd 2.0 and WCPS with 1000€ and 500€ respectively. The Europa Challenge Crystal bull award was sponsored by **HUNAGI** and from individual contributions of some members of the Organising committee. Jacobs University offered free accommodation for the students and the organisers.

For the participants of the conference, new leaflets about EUROGI and its coming **imaGIne** Conference were disseminated. Besides Prof. Baumann (Jacobs University), Prof Maria Brovelli (PoliMi) and Dr. Zoltán Siki (BME) will actively take part in that conference as invited members of the Open Source Session panel. Sven Schade of JRC has sent very relevant contributions to the rapporteur's report, which will be listed in its annex among the classified documents recommended for reading.

The Organisers of the [World Wind Europa Challenge 2014](#) presented the following letter:

"As organisers of the NASA World Wind Europa Challenge, we are very grateful to receive the award funding EUROGI provides! This will further encourage the winning university teams of this international challenge serving Europe's spatial information needs. The Europa Challenge criteria are guided by Europe's INSPIRE Directive. EUROGI's participation will greatly advance this enterprise to accelerate sustainable open source solutions purposed to address the needs of the European community.

Thank you for your generous support! We will continually recognize EUROGI as contributing to this effort. We are dividing the available funding amongst the top three teams, so we ask that you provide your respective proportion 500€ to one of the three winning teams. We are glad to provide you the information for that team after the announcement of the winners in a separate e-mail."

The kind extra arrangements provided by Marta Müller of Jacobs University Team are also acknowledged by EUROGI.

Report supplied by **Dr. Remetey-Fülöpp Gábor**, HUNAGI Secretary-General and member of the GSDI Legal & Socioeconomic Committee.

News from our MoU Partner Organisations

ICA News

The GSDI Association and the International Cartographic Association (ICA) established a Memorandum of Understanding for joint action in 2011.

ICA to Publish New Professional Journal

In the June ICA Newsletter, ICA President Bengt Rystedt announced launch of a new scientific journal by ICA from 2015. Here is an excerpt from his announcement in the Newsletter.

The ICA will start its own scientific journal! This decision is based on a long process, including analysis of the existing publication landscape of cartographic journals, discussion with the Commissions, assessment of demands and needs of academia and scientific organisations, and the overall acknowledgement of the importance of a scientific journal for a major international organisation, such as ours.

The journal will be called the International Journal of Cartography. The Editors-in-Chief will be William Cartwright and Anne Ruas, and Taylor & Francis will be our professional publication partner. The editorial and publishing teams are already working hard to be able to launch the first issue at the beginning of 2015.



The overall aim of the Journal is:

- to offer more options for those, who wish to publish their scientific work in an internationally recognised journal and, in this way, respond to an increasing demand within academia worldwide for career promotions;
- to provide a platform for reporting on new findings, insights and developments concerning scientific cartography and GIScience and thus strengthening the foundation and visibility of our domain;
- to cater for the entire ICA community, by publishing work on topics ranging from service-oriented cartography, web mapping, geovisualization and generalisation, all the way to the history of cartography, cartographic heritage, maps and society, and art and cartography; and
- to equally address two pillars of the ICA – cartography and GIScience.



We hope to attract authors doing research in cartography and GIScience to publish in a journal of cartography and GIScience rather than in any journal of whatever domain (and there are many). A scientific domain is very much defined by its main output media. Thus strengthening those will help to contribute to enlarge the discipline and make it more visible again.

Read the full article in the June ICA Newsletter, which can be downloaded here:

http://icaci.org/files/documents/newsletter/ica_news_62_2014_1_lq.pdf

All issues of the ICA Newsletter since 2001 can also be found on the GSDI Newsletter site at:

<http://www.gsdi.org/newsletters#ICA>

ISPRS News

The GSDI Association and ISPRS established a Memorandum of Understanding for joint action in 2011

CfP Special Issue "Open Geospatial Science and Applications"

Abstract submission deadline 15 Aug 2015.

We would like to invite your contributions to the Special Issue on "**Open Geospatial Science and Applications**" of the ISPRS International Journal of Geo-Information (ISSN 2220-9964), an international, open access journal on geo-information.

We are very pleased to have this special issue in an open access journal and also happy that the journal publishers have agreed to our request that as long as the papers are submitted before the **submission deadline (28 Feb 2015)**, the journal publishers have kindly agreed to publish planned papers free of charge.

The last decade has seen a rapid growth in open source geospatial software and open data developments. Building upon the broader progress in open science, the synergies in the developments in open source geospatial software, open data, open standards, open hardware and open access to research publications have been key in accelerating the advancement for open geospatial science and applications. We invite original research contributions on all aspects of open source geospatial software and its applications, and particularly encourage submissions focusing on the following themes for this Special Issue.

- The use of open source geospatial software and data, in and for scientific research
- Academic endeavours to conceptualize, create, assess open source geospatial software and data, and teach such usage.

- Use of Open Data and Big Data
- Data quality, software quality
- Open source implementations
- Open SDI
- Community building
- Assessment of costs and benefits of open source applications and open source business models
- Architectures and frameworks for open source software and data
- Teaching geospatial sciences with open source solutions and open data
- Open Source GIS application use cases: government, participatory GIS, location based services, health, energy, water, climate change, etc.
- Human computer interfaces and usability in and around Open GI systems

Details and submission guidelines including instructions for authors at:

http://www.mdpi.com/journal/ijgi/special_issues/science-applications

If you are interested to submit your paper, please email your abstracts to me at

Suchith.Anand@nottingham.ac.uk before **15/08/2014**.

We look forward to your contributions.

Guest Editors: Suchith, Thierry, Franz-Josef, Serena, Luciene, Barend

ISPRS eBulletin

The July 2014 issue of the **ISPRS eBulletin** is available from the ISPRS website at:

<http://www.isprs.org/news/newsletter/2014-03/index.html>.

Among the news in the July bulletin are:

- Seeking a Co-Editor-in-Chief for the ISPRS Journal of Photogrammetry and Remote Sensing
- TIF Travel Grant Reports
- Revising the Commission Structure of the Society
- ISPRS Congratulates MIGAIk on its 235th Birthday
- Special Issue of ISPRS International Journal of Geo-Information
- The Congress Director's Column
- ISPRS Commission VIII Symposium in Hyderabad, India, December 9-12, 2014
- 36th ISRSE Abstract Submission Now Starting - The Symposium is entitled "Observing the Earth, Monitoring the Change, Sharing the Knowledge". ISRSE and ISPRS are connected via the ICORSE Committee of ISPRS, see <http://www.isprs.org/structure/icorse.aspx>. Meeting proceedings of the ISRSE Symposium will appear in the ISPRS Annals and Archives series.



All past ISPRS eBulletins can be viewed at:
<http://www.isprs.org/news/newsletter/default.aspx>

or downloaded (PDFs) from the GSDI Newsletter archive at <http://www.gsdi.org/newsletters#ISPRS>.

12th ISPRS Student Consortium and WG VI/5 Summer School, Myanmar, 1-5 November 2014

"Geospatial Technologies for Environmental Management and Monitoring" will be held on 1-5 November 2014, at University for Forestry, Yezin, Nay Pyi Taw, Myanmar - directly after the 35th Asian Conference on Remote Sensing. The venue is University for Forestry, Yezin, Nay Pyi Taw and accommodation is at the Forestry Research Institute Guest House.

Following the tradition of the last Asian Conferences on Remote Sensing (ACRS) since 2010, an international Student Summer School will be organised after the ACRS 2014, which will take place at Myanmar, Nay Pyi Taw, on November 1-5. This is the 12th ISPRS Student Consortium and WG VI/5 Summer School, co-organised by the ACRS 2014 and also Asian Association on Remote Sensing (AARS).

The Summer School will include several topics on "Geospatial Technologies for Environmental Management and Monitoring" with several generally acknowledged international lecturers. The number of **participants is restricted to 40**. Interested persons should send their registration form by the following **deadlines**:

- non-Myanmar participants **by August 15**
- Myanmar participants **by September 5**

Please send registration forms to:
ksoo@myanmarpeace.org AND
kyawzaya.htun@gmail.com AND
tinaungmoe1@gmail.com AND
sumonforest@gmail.com

The registration fees are only 80 USD and include accommodation in shared room, meals, participation in the summer school, learning material (lectures and labs), and social events. Hope to see you there!

Source: The ACRS 2014 Secretariat

Website: http://www.acrs2014.com/summer_school

Important links:

- <http://www.acrs2014.com/>
- <http://www.isprs.org/>
- <http://www.a-a-r-s.org/>
- <http://www.isprs-sc.org/>

Organisers:

- ISPRS Student Consortium
- ISPRS WG VI/5 Promotion of the Profession to Young People
- Asian Association on Remote Sensing
- GIS Section, Forest Department, MOCAF
- Myanmar Peace Center

Local Organisers:

- Dr. Myat Su Mon
- Dr. Kyaw Zayar Htun
- Mr. Tin Aung Moe
- Dr. Kyaw Sann Oo

Sponsors:

- ISPRS
- Asian Association on Remote Sensing
- GIS section, Forestry Department, MOCAF
- Myanmar Peace Center

FIG News

The GSDI Association and FIG established a Memorandum of Understanding for joint action in 2010

The **FIG Article of the Month** for July is "**Performance of Real-Time Precise Point Positioning Using MADOCA-LEX Augmentation Messages**" by Ken Harima, Sue Lynn Choy, Yong Li, Thomas Grinter, Mohammad Choudhury and Chris Rizos, Australia and Yaka Wakabayashi and Kogure Satoshi, Japan.

This article is a peer-reviewed article presented at the **FIG Congress 2014** (<http://www.fig.net/fig2014/>) in Kuala Lumpur, Malaysia. The topic covers the Asian-Pacific area but is relevant and important internationally as well. The Quasi-Zenith Satellite System (QZSS) is a satellite-based augmentation system for the GPS, GLONASS and Galileo constellations, transmitting navigation signals that are compatible and interoperable with the Global Navigation Satellite Systems (GNSS). The enhanced capacity allows augmentation messages aimed at centimeter-level Precise Point Positioning (PPP) to be broadcasted over the QZSS wide area of coverage.

Abstract

The Quasi-Zenith Satellite System (QZSS) is a Japanese regional satellite navigation system consisting of several QZSS satellites in highly inclined elliptical orbits that allows it to cover a wide area in East Asia and Oceania. QZSS is a satellite-based augmentation system for the GPS, GLONASS and Galileo constellations, transmitting navigation signals that are compatible and interoperable with these Global Navigation Satellite Systems (GNSS). In addition to the navigation signals, QZSS also transmits augmentation signals L1-SAIF and L-band Experimental



(LEX) Signal. The LEX signal is unique for QZSS in that it is capable of delivering 2kbps (1695bps of effective bit rate) of correction messages compared to the 250bps of legacy Satellite based Augmentation Systems (SBAS) like the MTSAT Satellite-based Augmentation System (MSAS).

This enhanced capacity allows augmentation messages aimed at centimeter-level Precise Point Positioning (PPP) to be broadcasted over the QZSS wide area of coverage. One such message is the Multi-GNSS Advanced Demonstration of Orbit and Clock Analysis (MADOCA) based messages which are currently being broadcasted by the LEX signal. The aim of this research was to evaluate the quality of the corrections include the MADOCA messages and the performance of real-time PPP using these augmentation messages. Centimeter-level position accuracy was obtained for static PPP after 2 hours of convergence and decimeter-level accuracy was obtained for kinematic PPP after 1.5 hours of convergence. This service is expected to become continuously available for most of East Asia and Oceania region in 2018, when the QZSS constellation gets enhanced to four satellites.

The full article can be views online at:
http://fig.net/pub/monthly_articles/july_2014/harima_et_al.html

The article can be downloaded as a PDF file from:
http://fig.net/pub/monthly_articles/july_2014/harima_et_al.pdf

All FIG monthly e-Newsletters from 2007 can be downloaded from <http://fig.net/pub/eneews/index.htm> or from the GSDI Newsletter Archive at <http://www.gsdi.org/newsletters#FIG> for those posted since January 2010.

CAPACITY BUILDING

Webinars and Online Training

Readers should not forget the possibilities for training on specific aspects of geomatics, geoscience and SDI implementation offered by online webinars and more formal training opportunities from some of our members, not least our industry members, such as Esri and Intergraph, or association members, such as EuroGeographics, ICC (Cartographic Institute of Catalonia), UNIGIS, USGS/FGDC, EUROGI, HUNAGI, etc.

The latest information and schedule of webinars is maintained on the GSDI web site at this link:
<http://www.gsdi.org/webinars>

This includes webinars from other agencies, not just GSDI members, including US NOAA, ICA (with whom GSDI has

a Memorandum of Understanding on joint promotion), Open Geo Foundation and government agencies from various nations, to name but a few.

Forthcoming Webinar - Pick of the Month

semanticweb.com webinar: Getting Started with the Linked Data Platform

- Monday, August 11, 2014 - 18:00
- Webinar
URI: http://content.dataversity.net/081114LDPWebinar_SWWeinarRegistrationPage.html
- Fee: free

Linked Data Platform (LDP), the latest W3C standard for Linked Data, brings REST to Linked Data. LDP defines a standard way to access, create, and update RDF resources over HTTP. With this new capability, businesses can use Linked Data for data integration in read/write mode.

This webinar will introduce you to this new standard, explaining what's in it and how it fits with other standards like SPARQL. You will have a basic understanding of what you can expect to be able to do with this new technology so you can plan on how to best leverage it in your future business applications.

ARTICLE OF THE MONTH

In this issue of the Global Newsletter, we publish an article from the GSDI column that is published monthly by *GIM International* magazine. This month's article is by GSDI L&SE Committee co-Chair, Dr. Bastiaan van Loenen, which appears in the latest issue of *GIM International*.

GLIM: Geo Legal Interoperability Map of the World

The GSDI Association's Legal and Socioeconomic (L&SE) Committee welcomes a new co-chair, Dr. Joep Cromptvoets of KU Leuven, and a new work plan for 2014 - 2016. The Committee explores the legal, institutional, and socio-economic frameworks within which spatial data infrastructures are developed within individual nations and multi-nation regions. It encourages dialogue in regard to varying public policy and legal jurisdictions and explores models, approaches, and experiences that may enhance cooperation among nations in sharing spatial data and spatial information technologies.

Among the major future issues that are relevant for the Legal and Socioeconomic Committee are licensing, privacy, liability, Open Data, Volunteered Geographic Information (VGI), crowd sourcing, transparency, accountability, funding, governance, policy alignment, business models for SDI management, performance



assessment, and legal issues related to cloud computing, mobile computing and location-based services. The committee especially aims at exploring the legal, institutional and socio-economic frameworks within which spatial data infrastructures are developed.

In this column, we have focused on communicating the importance of legally interoperable geodata and services, especially with respect to interoperable licenses and systems of data protection. In our new L&SE 2014-2016 Work Plan, we carry out the next step in exploring and making transparent the global utilization of open licenses for geographic data and services. We will also globally explore data protection (privacy) frameworks that apply to geographic data. Both explorations will be communicated through the Geo Legal Interoperability Map of the world (GLIM), which may provide a glimpse of the status of the legal interoperability of SDIs in the world.

We aim at finalising the exploration by the end of 2014. Readers of GIM International are encouraged to contribute to GLIM by providing to us relevant input for their country or region. Do you have great examples of open licenses for geographic data in your country or region? Let us know through the L&SE Committee website at <http://www.gsdi.org/standingcomm/legal> or e-mail directly to the co-Chairs, Joep Cromptvoets (Joep.Cromptvoets [at] soc.kuleuven.be) or Bastiaan van Loenen (b.vanloenen [at] tudelft.nl).

The GSDI L&SE Committee is open to all who are interested in legal and socioeconomic issues relating to geospatial data, services and networks, used in all sectors of society. You do not have to be a member of the GSDI Association or a member of the Association's individual member arm, the International Geospatial Society (IGS) in order to participate.

Find out more about the work of the Committee at <http://www.gsdi.org/standingcomm/legal> and consider joining the L&SE discussion forum at: <http://lists.gsdi.org/mailman/listinfo/legal-socioecon>.

Check out the IGS at <http://www.igeoss.org/> and consider joining this group of over 400 individuals from across the globe who are interested in a wide range of SDI issues.

Finally, we would like to take this opportunity to thank Dr. Katleen Janssen for her excellent work as past chair of the GSDI Legal and Socio-Economic Working Group.

Dr. Bastiaan van Loenen is a past co-chair of the GSDI Legal and Socioeconomic Working Group of the GSDI Association. He is a faculty member of the Faculty of

Architecture and The Built Environment at Delft University of Technology in The Netherlands.

Learn more about how to participate in the GSDI Association here: <http://www.gsdi.org/joinGSDI>

Readers are reminded that they can subscribe to GIM International digital version completely free of charge or the print and digital version for 39 euro per annum. Visit the subscription page online at: <http://www.gim-international.com/subscription/index.php>

ASSOCIATED CONFERENCE NEWS

EUGISES 2014: Ninth European GIS Education Seminar – September 2014

The EUGISES 2014 9th European GIS Education Seminar - "GI Education for a Spatially-enabled Society" – will be held in Cork, Ireland, on 4-7 September, 2014. The programme includes invited talks:

- Sean O'Sullivan (GI Entrepreneur, venture capitalist and co-founder of MapInfo Corp.) (tbc);
- Prof Chris Brunsden (National Centre for Geocomputation, Ireland).

Symposium sessions include:

- GI Education Initiatives across Europe,
- The GI Book of Knowledge - Need to Know (GI BoK-N2K) project,
- New Technologies on the Curriculum,
- The Labour Market and GI Education
- And more...

Hands-on workshops led by staff from ESRI and Google. And of course an active social programme, featuring the best of Irish entertainment and hospitality! For more information, offer an abstract or to register visit: <http://eugises2014.eugises.eu>

About EUGISES 2014

This will be the ninth European GIS Education Seminar - EUGISES 2014. Developing upon very successful meetings in the Netherlands (1998), Hungary (2000), Spain (2002), Austria (2004), Poland (2006), Cirencester (2008), Serres (2010) and Leuven (2012), it will come to Cork in Ireland for 2014. The seminar will provide an informal setting for European and global researchers and professionals in the Geographical Information sector to share ideas, best practice, innovations and novel applications, and to discuss issues relevant to teaching and learning about GIS, Earth Observation and Remote Sensing, surveying and photogrammetry, and all aspects of geoinformatics education. Papers will be presented in a single stream through the seminar to ensure delegates can attend all sessions.



Geospatial and Engineering International Conference, September 2104

The Conference program will feature agencies and organizations that finance, procure, coordinate, and manage geospatial and engineering projects outside the United States with presentations on their programs, budgets, requirements, and procurement procedures. Private sector professionals experienced in international business will share best practices and lessons learned. Sessions will focus on both new entrants to the market outside of the United States, as well as those experienced in overseas work. Get the program here: <http://www.mapps.org/page/GeoInternatProgram>

Who should attend?

If you are responsible for and interested in international contracting outside of the United States for professional geospatial and engineering services, then this conference is for you. The conference will provide information and practical knowledge to enable firms to export their services, data and products to overseas clients.

What organizations are involved?

MAPPS is pleased to be hosting the Geospatial & Engineering International Conference: Entering & Expanding Global Business Opportunities on September 25-26, 2014 at the Westin Hotel in Alexandria, VA. Participating organizations include the Association of American Geographers (AAG), American Society for Photogrammetry and Remote Sensing (ASPRS), Construction Industry Round Table (CIRT), **Global Spatial Data Infrastructure Association (GSDI)**, National Society of Professional Surveyors (NSPS), and the Urban and Regional Information Systems Association (URISA).

Conference & Hotel Registration

Early rate for conference registration is available now. All MAPPS members, as well as members of all participating organizations, receive a discount. Conference registration here:

<http://www.mapps.org/events/register.aspx?id=385075>

MAPPS has secured a special hotel room rate with the Westin Hotel in Alexandria, VA. The room rate is guaranteed through September 12 or until rooms sell out, so make your room reservations today here:

<https://www.starwoodmeeting.com/StarGroupsWeb/res?id=1312097048&key=71A50>

Contact Information

For specific questions, contact sally@mapps.org. If you are interested in receiving updates about the conference via email, please use this link:

<http://www.mapps.org/page/GeoInternatContactUs>

Joint International Conference on Geospatial Theory, Processing, Modelling and Applications – October 2014

This joint conference will be held on October 6-8, 2014 at the Toronto Marriott Downtown Eaton Centre, Toronto, Canada. The conference Registration and Online Hotel Room Booking is now open. Register before 01 May 2014 to enjoy the early registration rates, and book your rooms before 01 August 2014 to receive \$20.00 reduction on top of the group rates from the hotel. The ISPRS Foundation offers travel grants to support participation in 2014 ISPRS TC II Midterm Symposium. To apply, please visit: <http://www.isprs.org/foundation/>

The Joint International Conference on Geospatial Theory, Processing, Modelling and Applications is hosted by the Canadian Institute of Geomatics (CIG) and co-organized by the International Society for Photogrammetry and Remote Sensing (ISPRS) Technical Commission II on Theory and Concepts of Spatial Information Science, International Geographical Union (IGU) Commission on Geographical Information Science and Commission on Modelling Geographical Systems. With a theme on Building Connections in GISciences for Future, the conference intends to present and disseminate the research, development and the innovative applications of geographical information theory and technologies in broad areas, as well as other interested areas by the participating organizations.

This conference joins the following symposia together:

- 2014 ISPRS Technical Commission II Midterm Symposium
- 16th IGU Spatial Data Handling Symposium

ISPRS Technical Commission II Midterm Symposium is held every four years in between two consecutive ISPRS Congresses. The symposium aims to bring together scholars and professionals from the international community of geospatial information sciences and engineering to present latest research achievements and technological developments. The topics of the symposium address the focuses outlined by the Commission, stated on its website:

<http://www2.isprs.org/commissions/comm2.html>.

The **International Symposium on Spatial Data Handling (SDH)** is the biennial international research forum for Geospatial Information Science, co-organized by the IGU Commission on Geographic Information Science and the IGU Commission on Modelling Geographical Systems. It commenced in 1984, in Zurich, Switzerland and has since been held biennially in Seattle, USA; Sydney, Australia; Zurich, Switzerland; Charleston, USA; Edinburgh, UK; Delft, The Netherlands; Vancouver, Canada; Beijing,



China; Ottawa, Canada; Leicester, UK; Vienna, Austria; Montpellier, France; and Hong Kong, China. The International Symposium on Spatial Data Handling has become a major resource for recent advances in GIS research and is regarded as a premier international research forum for GIS.

7th URISA Caribbean GIS Conference – October 2014

URISA is pleased to host the 2014 conference in the Dutch Caribbean on October 27-30, 2014 at the Santa Barbara Beach & Golf Resort, Curacao! The conference will focus on the effective application and management of GIS and other information technologies within the Caribbean. Previous Caribbean GIS conferences have taken place in Jamaica (2001), Barbados (2004), the Bahamas (2006), the Cayman Islands (2008), Trinidad and Tobago (2010) and Jamaica (2012). Get full details here: <http://www.urisa.org/education-events/caribbean-gis-conference/>

The objectives of URISA's Caribbean GIS Conference are to:

- inform broad cross-section of Caribbean users about GIS technology and applications,
- share experiences regarding GIS implementation and management issues,
- establish new relationships with the vendor/consultant community,
- provide workshops and sessions that are application driven, and are relevant to the Caribbean community of GIS users,
- foster a Caribbean GIS network,
- assess the state of readiness of national and regional Spatial Data Infrastructures,
- act on directives from the High Level Meetings held over the past several years, fostering executive support for GIS.

The Conference Program is developed through a Call for Presentations. The committee welcomes the submission of individual papers, complete sessions, panel discussions and lightning talks.

Esri Health GIS Conference Update – November 2014

Big changes are coming to health and human services (HHS). And you are invited to a gathering of peers and experts where it all will be spelled out - the 2014 Esri Health GIS Conference, to be held November 3-5, 2014, at the Broadmoor in Colorado Springs, Colorado. This major national GIS event is your opportunity to be on the geospatial cutting edge -- to experience the winds of progress ahead of your colleagues who do not attend. You'll learn state-of-the-art GIS tools, network with peers across the health continuum, and gain perspective from industry leaders including Esri experts.

Two Ways to Participate: Present a Paper, Display a Map: Put your geospatial expertise in front of customers and peers. If you're a GIS professional in health and human services - someone with practical expertise and skills in the real world, then at the 2014 Esri Health GIS Conference, you'll have an opportunity to show your colleagues what works - or doesn't work.

We welcome professionals in public health, hospitals and health systems, human services, and academic health and research. The Esri Health GIS Conference is much more than any other user conference - it will put you squarely on the front line of HHS geospatial technology and best practices for 2014.

Get the details and register here:

http://www.esri.com/events/health/?WT.mc_id=EmailCampaignh21803

International Workshop on Spatial Data and Map Quality – January 2015

The International Workshop on Spatial Data and Map Quality will take place on 20-21 January 2015 at the Old University Building, Valletta, Malta. **Deadline for abstract submissions is 12 September 2014.**

A number of international groups and organisations actively involved in spatial data and map quality issues are organizing a two-day international workshop aimed at providing innovative and original contribution to the ongoing debate on spatial data and map quality issues and at improving the process of knowledge transfer by means of the development of new techniques and methods for quality assessment of spatial data sets and the maps produced.

Download workshop announcement here:

http://www.eurogeographics.org/sites/default/files/SDMQ15-Workshop_announcement1_0.pdf

Please direct any queries to Carol Agius.

[carol.agius@mepa.org.mt]

Submissions:

Abstracts (500 - 100 words) using the approved template (.docx format)

http://www.eurogeographics.org/sites/default/files/SDMQ_abstract_template.docx can be uploaded on-line here:

<https://www.easychair.org/conferences/?conf=sdmq2015>

- Acceptance for an oral presentation, poster, or software demonstration at the workshop will be announced by 31 October 2014.



- **Deadline for long abstract/full paper is 31 December 2014.**
- Registration for the workshop will open in September 2014.



The workshop is organised by **GSDI Members EuroGeographics** and the **Open Geospatial Consortium (OGC)**, plus EuroSDR, ISO and members of the EU-funded European Location Framework (E.L.F.) project.

INSPIRE and Geospatial World Forum announce joint 2015 Conference



During the INSPIRE 2014 conference in Aalborg, Denmark, INSPIRE and the Geospatial World Forum announced plans to co-host the 2015 INSPIRE and Geospatial World Forum scheduled for

24 to 29 May 2015 in Lisbon, Portugal. The theme of the 2015 joint conference will be Convergence: Policies + Practices + People (PPP) addressing the need for synergy between policy makers, technology providers and end users highlighting workflow in order to facilitate more informed decision making from stakeholders.

Source: <http://www.geospatialworldforum.org/>

PARTICIPATION IN GLOBAL & REGIONAL SDI PROJECTS

INSPIRE (the European Regional SDI) Updates

Testing the new INSPIRE registry, registers and Re3gistry software

The JRC INSPIRE Registry are happy to announce a new candidate release of the INSPIRE registry and registers that is based on the v0.4 release candidate of the Re3gistry software. Before officially publishing these, we would like to invite you to participate in the testing of both the content and new functionalities of the service and the software.

For this purpose, two test instances have been set up:

- The testing instance for the candidate release of the INSPIRE registry and registers contains all content and functionality that are proposed to be included in the final release 4 of the INSPIRE registry. (see <http://inspire-regadmin.jrc.ec.europa.eu/registry>).
- For testing the new functionalities of the Re3gistry software, a "sandbox" instance of the software has been set up, whose content can be freely modified

through the instance's administration interface. Please note that the content and identifiers (URIs) of this instance are not authoritative, and the register content may be cleaned up from time to time. (see <https://inspire-regadmin.jrc.ec.europa.eu/sandbox/admin/>).

Instructions for testing as well as the draft documentation for the new INSPIRE registry service and Re3gistry software are available in a specific sub-project in the MIG collaboration space. (see <https://ies-svn.jrc.ec.europa.eu/projects/registry-development/wiki>).

The testing will run until **Monday, 15 September 2014.**

If you are interested in testing new release candidates of the software or service, please register in the MIG collaboration space and send an e-mail to inspire-registry-dev@jrc.ec.europa.eu.

Questions, issues for discussions, bugs and suggestions for new features can be submitted in the issue tracker at: <https://ies-svn.jrc.ec.europa.eu/projects/registry-development/issues/new>

In order to submit new issues, you have to be signed into the collaboration space and have been assigned to the testing project. Please also check the existing issues before submitting a new issue.

All of our European GSDI Members and many individual members are involved in implementing the EU INSPIRE Directive in some way. This is the first and only attempt at implementing a truly multi-national cross-border SDI whose harmonisation and interoperability standards, rules and regulations apply to all 28 European Union Member States.

Links:

INSPIRE registry and registers: <http://inspire-regadmin.jrc.ec.europa.eu/registry>

Re3gistry software, v0.4 release: <https://inspire-regadmin.jrc.ec.europa.eu/sandbox/admin/>

MIG collaboration space: <https://ies-svn.jrc.ec.europa.eu/account/register>

UN-GGIM

Seeking a Secretary for UN-GGIM: Europe

UN-GGIM Europe is looking for a skilled and experienced person with excellent interpersonal and communication skills who is available for a full time position starting in September. The position is, initially, for a two-year period of time.



This is an interesting opportunity to work in developing and supporting the European regional committee of United Nations initiative on Global Geospatial Information Management (<http://ggim.un.org/about.html>) the goal of which is to take a leading role in setting the agenda for global geospatial information development and promoting the benefits of geospatial information for addressing national policy and key global challenges.

Although UN-GGIM was created in 2011, the regional structure of UN-GGIM: Europe is in its early stages; the Articles will be adopted at its first plenary meeting in Chisinau, Moldova on 1 October 2014.

The role of the successful candidate will be to ensure that the work of UN-GGIM: Europe is managed effectively and efficiently and that relevant bodies in the European UN Member States, and Observer organisations are kept well informed. You will need to demonstrate judgment, initiative and creativity. You will also be reliable, able to work independently and focused on delivery.

The job can be carried out from your current office, if seconded from a EuroGeographics member organisation, within our offices in Brussels or on a 'home-working' arrangement.

The job description and more details are available at: <http://www.eurogeographics.org/sites/default/files/UN-GGIM%20Europe%20Secretary%20Job%20Description%20v1%201.pdf>.

Your salary will be based upon experience and working arrangements.

If you wish to apply, please send your CV and a short motivational letter highlighting your experience to virginie.luppens@eurogeographics.org

The deadline for applying is 14 August 2014

UN Global Forum and UN GGIM Meetings in New York, August 2014

The United Nations Global Forum on the Integration of Statistical and Geospatial Information is taking place in the UN Headquarters in New York from 4-5 August 2014. The Forum is being organized by the United Nations Statistics Division, as the Secretariat of the UN Statistical Commission and the UN Committee of Experts on Global Geospatial Information Management (UN-GGIM), and substantively supported by the United Nations Expert Group on the Integration of Statistical and Geospatial Information.

List of documents:

- Announcement Letter: <http://ggim.un.org/docs/meetings/GGIM4/GGIM-4 Announcement Letter 10April2014.pdf>
- Flyer: <http://ggim.un.org/docs/meetings/GGIM4/Stat-Geo Global Forum Flyer 10April2014.pdf>
- Concept Note: <http://ggim.un.org/docs/meetings/GGIM4/Concept Note.pdf>

Contact details:

Mr. Amor Laaribi, United Nations Statistics Division
Global Geospatial Information Management, UN
Statistics Division
E-mail addresses: laaribi@un.org

UN-SPIDER Monthly Updates

The UN-SPIDER monthly updates are compiled at the end of each month and sent out by e-mail to all subscribers. The aim is to update subscribers on the latest UN-SPIDER and community news, and about upcoming events organized or supported by UNOOSA/UN-SPIDER. The updates present the reader with an overview or summary of the news and provides him/her with a link to the full online version. Subscribe to the Updates here: <http://www.un-spider.org/mailling-list-subscribe>

The Updates are also available from the GSDI Newsletter Archive at: <http://www.gsdi.org/newsletters#UNSPIDER>.

The GSDI Association acquired Special Consultative status with the UN Economic and Social Council (ECOSOC) on 1 May 2014, permitting GSDI to engage with ECOSOC, the United Nations Secretariat, programmes, funds and agencies on activities related to GSDI's area of expertise.

WGISS-38 Meeting



WGISS-38 will be held in Moscow, Russia, September 29 to October 3, 2014. The meeting will be hosted by JSC "Russian Space Systems" and ROSCOSMOS.

WGISS (The Working Group on Information Systems and Services) is a subsidiary body supporting the Committee on Earth Observing Satellites (CEOS). WGISS promotes collaboration in the development of systems and services that manage and supply these observatory data.

WGISS creates and demonstrates prototypes supporting



CEOS and Group on Earth Observation (GEO) requirements. WGISS also addresses the internal management of EO data, the creation of information systems and the delivery of interoperable services. The activities and expertise of WGISS span the full range of the information life cycle from the requirements and metadata definition for the initial ingestion of satellite data into archives through to the incorporation of derived information into end-user applications.

Gabor Remety-Fulopp will be attending on behalf of the GSDI Association. Gabor will provide us with a short report following the meeting, to be published in a future issue of the Global Newsletter. For more information, visit:

http://www.ceos.org/index.php?option=com_content&view=category&layout=blog&id=77&Itemid=199.

GSDI COMMITTEE NEWS

To keep abreast of what is happening in SDI and related fields around the globe, be sure to check out the various newsletters downloadable from the GSDI website (<http://www.gsdi.org/newsletters>). These include the **GSDI Regional Newsletters** for Africa, Asia-Pacific, and Latin America & Caribbean; the **GSDI & IGS Global News** (covering GSDI Association and IGS Member activities), **FGDC Newsletter** (USA SDI news), EuroGeographics and **EUROGI Newsletters** (covering Europe), **EIS-Africa** (environmental news from Africa), **SALB Newsletter** (Second Administrative Level Boundaries from the UNGIWG project), the **UN-SPIDER Newsletter** (the UN Platform for Space-based Information for Disaster Management and Emergency Response, published by UNOOSA – UN Office for Outer Space Affairs), and the newsletters of the organisations with which GSDI has MoUs – **ICA**, **FIG** and **ISPRS**

Outreach & Membership Committee

The final draft of the 5-year GSDI & IGS Strategic Plan, already viewed by the Executive Committee and other officers, will be sent to the Board on 1 September, prior to the planned GSDI Board meeting telecon on 9 October 2014. Following Board comments and/or approval, the strategy document will then be circulated to all GSDI and IGS Members.

Committee vice-Chair, Communications, Roger Longhorn, and vice-Chair, Europe, Joep Cromptvoets (also co-Chair of the Legal & Socioeconomic Committee) delivered keynote presentations at the 2014 MOI Open Data Forum, hosted by the Ministry of the Interior of Taiwan. The visit was arranged by Societal Impacts Committee vice-Chair, Capacity Building, Mr Jeremy Shen. The occasion of the Forum was the official launch of Taiwan's Open Data Portal for government data.

During their visit, the Association's newest member, the Taiwan Association of Disaster Prevention Industry, made an extensive presentation to Roger and Joep on the activities of various TADPI members present at the meeting. The meeting was chaired by TADPI Secretary-General, Thomas Chin-Tung Cheng, Deputy Manager of the Disaster Prevention Technology Research Center of Sinotech Engineering Consultants Inc. See further information about TADPI in the *Association Member News* section of the newsletter. Information about TADPI (in English) can be downloaded from the GSDI Members database at:

http://memberservices.gsdi.org/files/?artifact_id=1545.

A full visit report is in preparation for publication in August, including meetings with the Information Technology Department of Taipei City Government, the National Development Council, the Open Data Alliance, the Industrial Development Bureau of the Min. of Economic Affairs and International Integrated System, Inc., who also provided Roger & Joep's mentor for the visit.



The O&M Committee manages the GSDI Group on LinkedIn, which now has **351 members**. If you are not already a member of this group, please join today – and tell your friends! Visit <http://www.linkedin.com> to join, then find GSDI in the 'Groups' option, to join the group or go direct to: <http://www.linkedin.com/groups/GSDI-Association-3794985>.

Note: you do NOT have to be a member of the GSDI Association or the International Geospatial Society to join the LinkedIn group! However, requests to join the group and/or to post messages are moderated.

Our **Facebook** account has gathered a few more followers and GSDI and IGS members are encouraged to use Facebook to tell us about their activities. Visit us on Facebook at: (www.facebook.com/gsdilandigs).



We continue to publish news on the Members' Corner of the GSDI website and via **Twitter @GSDI_IGS**.

Legal & Socioeconomic Committee

The Legal and Socioeconomic Committee welcomes a new co-chair: prof. dr. Joep Cromptvoets of KU Leuven, Belgium. They have also published the new work plan 2014-2016 available here:

http://memberservices.gsdi.org/files/?artifact_id=1473

Among the major future issues relevant for the L&SE Committee are Licensing, Privacy, Liability, Open Data,



Volunteered Geographic Information, Transparency, Accountability, Funding, Governance, Policy alignment, Business models for SDI management, Performance assessment, and legal issues related to Cloud computing, Mobile computing and Location based services.

The committee especially aims at exploring the legal, institutional and socio-economic frameworks within which spatial data infrastructures are developed.

The new 2014-2016 work plan includes the next step in exploring and making transparent the global utilization of open licenses for geographic data and services. We will also globally explore data protection (privacy) frameworks that apply to geographic data. Both explorations will be communicated through the Geo Legal Interoperability Map of the world (GLIM) that provides a glimpse of the status of the legal interoperability of SDIs in the world. See <http://www.gsdi.org/standingcomm/legal> and visit the new map here: <http://evetion.nl/license/>

We aim at finalising the exploration of open licences for geo-data and geo-data protection issues by the end of 2014. Do you have great examples of open licenses for geographic data and these are not listed in GLIM? Let us know through the Committee website at <http://www.gsdi.org/standingcomm/legal> or directly by e-mail Joep Crompvoets (Joep.Crompvoets [at] soc.kuleuven.be) or Bastiaan van Loenen (b.vanloenen [at] tudelft.nl).

Finally, we would like to take this opportunity to thank Dr. Katleen Janssen for her excellent work as chair of the GSDI Legal and Socio-Economic Working Group.

Reported by Bastiaan van Loenen and Joep Crompvoets.

Societal Impacts Committee

The Societal Impacts Committee, chaired by Carmelle Terborgh (Esri), administers the GSDI Small Grants Program, where vice-Chair, Brigitta Urban-Mathieux (FGDC/USGS) supports Small Grants Program development. Jeremy Shen is vice-Chair, Capacity Building. The Societal Impacts Committee also supports the International Geospatial Society officers in relation to capitalizing on capacity building initiatives for IGS members, especially from developing nations.

2014 GSDI Small Grants Program Update

Since its launch in 2003, the GSDI Association's Small Grants Program has supported more than 100 projects across the globe. Through 2012, the program was sponsored via a partnership between the GSDI Association, the U.S. Federal Geographic Data

Committee, and the GISCorps of URISA. Three types of awards are available: a cash award of up to US\$ 2500 per project; SDI/GIS consulting services up to the value of US\$ 2500; or a combination of cash award and SDI/GIS consulting services. The consulting services are offered through the GISCorps.

A Call for Proposals was issued in March 2014, resulting in 40 proposals, which were reviewed by volunteers from six continents from organizations in over 20 countries. The four proposals selected for funding were from Ghana, Uganda, Belize and Armenia, as reported in a previous Global Newsletter.

Many other very worthy proposals were received, but to support those, GSDI needs more funding! We hope that other GSDI Association members, or organizations that are not members but who appreciate the value of the Small Grants Program, would consider supporting some of the unfunded proposals this year. The Societal Impacts and Outreach and Membership Committees are reviewing the non-funded proposals to create a short list for further support, should the funds become available.

To see details, including final project reports, from all the proposals funded by GSDI Small Grants since 2003, please visit this web site: <http://www.gsdi.org/sic1>

Further Funding Needed for Small Grants Program

Many of the applications for support received in response to the call earlier this year warrant funding, yet within the current Small Grants budget, we were only able to fund four grants. If your organisation can offer such support, please contact either the GSDI President, Dr. David Coleman, at dcoleman@unb.ca or the Societal Impacts Committee Chair, Carmelle Terborgh (cterborgh@esri.com) or Brigitta Urban-Mathieux (Gita Urban-Mathieux burbanma@fgdc.gov). The Small Grants Program has been one of the most successful initiatives of the Association, having funded or part-funded more than 100 projects, meetings, conferences, and training opportunities since its launch in 2003. For information on how to donate, download the program flyer at this link: http://memberservices.gsdi.org/files/?artifact_id=1512.

Note: The Small Grants Program is intended as a benefit of "full membership" in the GSDI Association. We make this opportunity available to non-members, as well, however, full members may obtain favored treatment in the instance in which two grant applications have been ranked similarly in the peer review process. Note that the annual GSDI Association membership fee for national organizations in low and very low per capita income nations may be as little as U.S. \$100 or documented in-kind contributions in lieu of dues. Please see www.gsdi.org/joinGSDI for details.



As always, we express the Association's grateful thanks for the past support of the US Federal Geographic Data Committee (FGDC) and on-going support from the URISA GISCorps and Natural Resources Canada (via GeoConnections) for making the programme possible.

THE INTERNATIONAL GEOSPATIAL SOCIETY (IGS)

The *International Geospatial Society* is the **individual membership arm of the GSDI Association** and seeks individuals for membership who have geospatial, SDI, GIS or related professional or specialist interests, including professionals working in these topic areas in government, academia or industry, and students.

IGS members are automatically GSDI Association members. The Society enhances communications globally among individuals that are actively involved in promoting, developing, or advancing spatial data infrastructure and related concepts. As of 31 July 2014, IGS had more than 400 members. The IGS web site is at: <http://www.igeoss.org>.

The IGS officers launched its second annual survey of members to find out more about the topics of most interest and value to the membership. This will help in development of action plans for implementing the 2014 – 2015 IGS Work Plan, and the part it plays in the wider 2015-2020 GSDI Strategy. At end of July, 85 members had completed the survey. The Work Plan can be accessed here: http://memberservices.gsd.org/files/?artifact_id=1536

As Dev assumes the Presidency from Sives on 1 January 2015, the election of a new vice-President/President-Elect will be held electronically in late October 2014. A further announcement calling for nominations and explaining the voting process will be distributed on August 18 to all current IGS members.

IGS REMINDERS

Subscriptions to GIM International

Get your free subscription to *GIM International* magazine. GIM International carries GSDI news, including IGS news, in a monthly column. If you want to stay up to date with this column and read up on other developments in Geomatics, please follow this link and subscribe if you are not already receiving a hard copy of the magazine: <http://www.gim-international.com/GSDI>.

Subscriptions to Geospatial World Online Magazine

Geospatial World magazine is now offering free subscriptions to IGS members from developing nations or who are students.

Participation in GIKNet

IGS members are also reminded that information is uploaded in the *GIKnet Spatial Data Depot*, to which they are requested to contribute. Members are invited to actively participate in the IGS discussion list and/or on the GSDI LinkedIn Group as a means of sharing news, plus on the other regional and topic-oriented discussion lists of the GSDI Association.

GSDI & IGS on LinkedIn and Facebook

If you have not already done so, please join the GSDI Group on the professional networking site **LinkedIn** at www.linkedin.com. This group now serves both the GSDI Association and the International Geospatial Society – and is there for YOU to use to let the geo community know what you are doing – or to seek advice on important issues that you may be facing in your work or studies. You can now also join us on Facebook at www.facebook.com/gsdianDIGS/ to share your news.

Join IGS Today!

Remember that individuals in low and very low income nations can apply to join the International Geospatial Society (IGS) by providing specific information of value to the global community in lieu of annual cash dues. The listing of low and very-low income nations may be found at <http://www.gsd.org/RankingTable>. To join for free, simply add your professional profile to the growing interconnected network of geospatial specialists across the globe on the Geographic Information Knowledge Network (GIKNet) at <http://giknet.org> and then apply for membership in IGS at <http://www.igeoss.org/join>.

Help us reach – or beat! - our goal of 500 IGS Members in 2014 - get your friends, colleagues and associates to join today! We are continually looking for ways to improve on IGS Member Benefits, so please tell us what you think would be most valuable to you, as an IGS Member - or as a potential IGS Member.

IGS Member News!

IGS Members – submit your news, so that we can learn more about what our membership is doing! There are more than 400 of you out there now, so please communicate with us. News can be sent by e-mail directly to me, Roger Longhorn, Editor GSDI & IGS Global Newsletter at: ral@alum.mit.edu, or to Sives Govender, IGS President, at: sives.govender@gmail.com or to Dev Raj Paudyal, IGS President-elect, at: [DevRaj.Paudyal \[at\] usq.edu.au](mailto:DevRaj.Paudyal[at]usq.edu.au).



THE GEOGRAPHIC INFORMATION KNOWLEDGE NETWORK (GIKNET)

Visit and contribute to GIKnet, including registering your own details or those of your organisation! The aim of GIKNet is to enhance communication and freely share knowledge among professionals in the global geographic information community. GIKNet is a participatory, user-created and maintained information commons.

The GIKNet **Community Registry** permits individuals, government agencies, NGOs, companies and other institutions to record and publish details about themselves in a central database, and to submit relevant documents to the Spatial Documents Depot, which provides a search facility for locating information and documents submitted by GIKNet members. The Community Register currently holds details of 685 individuals, 27 companies, 31 NGO/Non-Profits and Academic institutions, and 165 government agencies.

A comprehensive list of GI/SDI related discussion lists from many organisations can be accessed from a single reference page. Access the GIKNetwork at this link: <http://www.giknet.org/lists/>.

An 8-minute background video on the purposes and goals of the GIKNet may be found at: <http://www.youtube.com/user/spatialinnovations>.

The main categories under which documents can be referenced in GIKNet include: *GI Science - Education & Training*; *GI Science - Research*; and *SDI/GIS - Practice and Applications*. The network is promoted on the Association's e-mail lists and the LinkedIn GSDI Group.

All members of the GSDI Association and IGS are encouraged to sign up for GIKnet, enter their personal or agency profile information, and then submit documents relevant to any aspect of SDI development and deployment, globally.

Entering a professional profile to GIKNet is similar to entering a professional profile on Wikipedia, except that an individual may enter and maintain their own profile (in a format similar to that found on Linked In or other social networking sites) and GIKNet is restricted to geospatial professionals, students and those involved in implementing spatial data infrastructures (SDI) at any level.

Entering information about a geospatial agency or organization is similar to an entry in Wikipedia, except that individuals affiliated with the organization enter the data and it is much easier to accomplish.

The GIKNetwork is moderated by GSDI Association

volunteers who review profile submissions for relevance. In short, none of us knows as much as all of us. GIKNet is intended for collective intelligence whereby each community member acts responsibly and makes their own decisions on what and how much to contribute.

Participating in GIKNet

Join the network by clicking 'Login' in the upper right corner of the GIKNet home page (<http://www.giknet.org>) and use the 'Register for an Account' link. If you are already registered, then simply 'Login' to GIKNet (in the upper right corner of the welcome screen) or use the password reminder facility. (Your Username and/or Password can be e-mailed to you, using the e-mail address that you used when first registering).

The first thing you should accomplish after registering is to add information about yourself by using the 'GI Community Registry' link in the left menu to lead you to Enter Profile for Individual. The questions are similar to those used by sites such as "LinkedIn", so you might simply cut and paste from other sites in which you already participate. Most responses are limited typically to 200 words. Don't forget to upload a photo! You have the ability to view, edit, and delete your individual profile at any time in the future through your 'My Submissions' link in the upper right corner.

After that, feel free to add profile information about geospatial agencies, companies and NGO's with which you are affiliated. In a way, this is similar to entering basic information about geospatial organizations into Wikipedia, but much simpler.

Above all – contribute documents to the GIKNet *Spatial Documents Depot* relevant to any aspect of SDI development, implementation, monitoring, etc. so that we can build a useful repository of easily accessible information on SDI 'best practice' for access by all.



GSDI AND INTERNATIONAL INITIATIVES

GSDI Member organisations, members of the GSDI Association Committees, Council and Board, and IGS members are involved in many other regional and global initiatives on an on-going basis.

- Eye on Earth – www.eyearth.org.
- Group on Earth Observations (GEO) / Global Earth Observation System of Systems (GEOSS) – www.earthobservations.org.
- EuroGEOSS – GEOSS Project funded by the European Union – see www.eurogeoss.eu.
- EU INSPIRE – Infrastructure for Spatial Information in the European Community – inspire.jrc.ec.europa.eu.
- International Cartographic Association (ICA) – www.icaci.org.
- International Federation of Surveyors (FIG) – www.fig.net
- International Hydrographic Organisation (IHO) – Marine SDI Working Group – www.iho.int.
- International Society for Digital Earth (ISDE) - www.digitalearth-isde.org.
- International Steering Committee for Global Mapping (ISCGM) – www.iscgm.org
- UNESCO IOC – Marine/Coastal Spatial Data Infrastructure development – www.iode.org.

- UNSD (Statistics Division) – UN-GGIM (UN Global Geospatial Information Management) – ggim.un.org.
- UNSDI – UNGIWG (UN GI Working Group) – www.ungiwg.org.

GSDI DISCUSSION FORUMS UPDATES

To see the latest news from the different e-mail forums maintained by the GSDI Committees (4) and the regional SDI Newsletters (5), visit the web site at <http://www.gsdi.org/discussionlists>, choose the forum of interest and select the 'Archives' option. All discussion lists are open to anyone who is interested in participating, and joining instructions are at the web site above.

GSDI ONLINE CALENDAR

GSDI's calendar of upcoming international events at <http://www.gsdi.org/upcnf> is a unique summary of global and regional conferences, symposiums, workshops, and other related gatherings that pertain to spatial data infrastructure, such as spatial data handling, data visualization, open data policy, research cyberinfrastructure, and RS/GIS applications. GSDI is always on the lookout to include appropriate events, so if you know about one which is not already included, feel free to submit it.

For more information on any of these items, visit the **GSDI Association** web site at <http://www.gsdi.org>.

GSDI AND IGS GLOBAL NEWS - News from the GSDI Association and the International Geospatial Society – is published by the GSDI Association, edited by Roger Longhorn, vice-Chair, Communications, of the GSDI Outreach and Membership Committee. The Editor may be contacted at rlonghorn@gsdi.org. Please feel free to submit your news to the Editor, relevant to GSDI and IGS Member news or SDI initiatives at any level.

The GSDI Association is an inclusive organization of organizations, agencies, firms, and individuals from around the world. The purpose of the organization is to promote international cooperation and collaboration in support of local, national and international spatial data infrastructure developments that will allow nations to better address social, economic, and environmental issues of pressing importance.

Our Vision ... is of a world where everyone can readily discover, access and apply geographic information to improve their daily lives.

Our Purpose ... is to encourage international cooperation that stimulates the implementation and development of national, regional and local spatial data infrastructures.

Our Mission ... is to advance geo-information best practices, knowledge sharing and capacity building for the improved sharing and application of geographic information.

